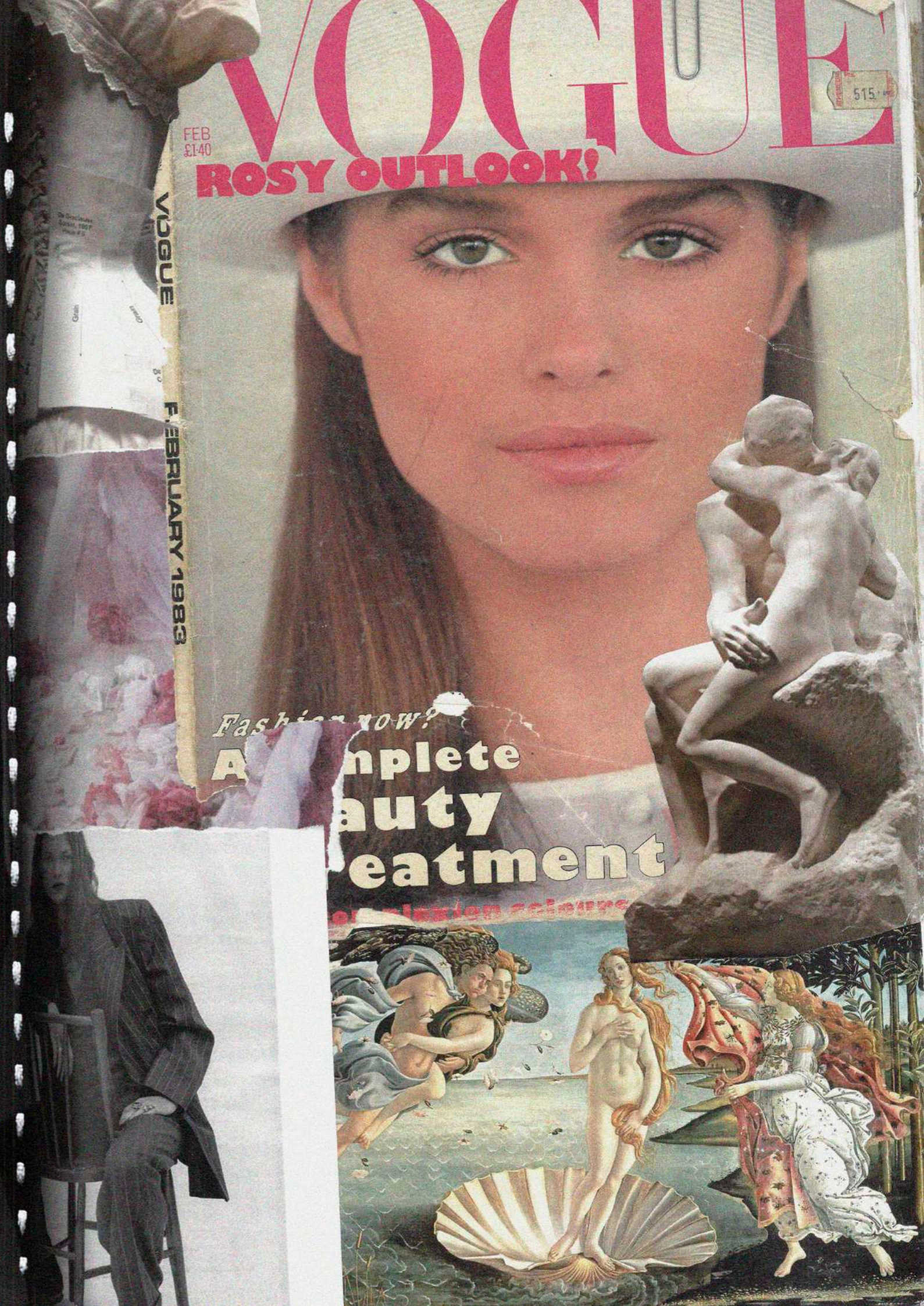
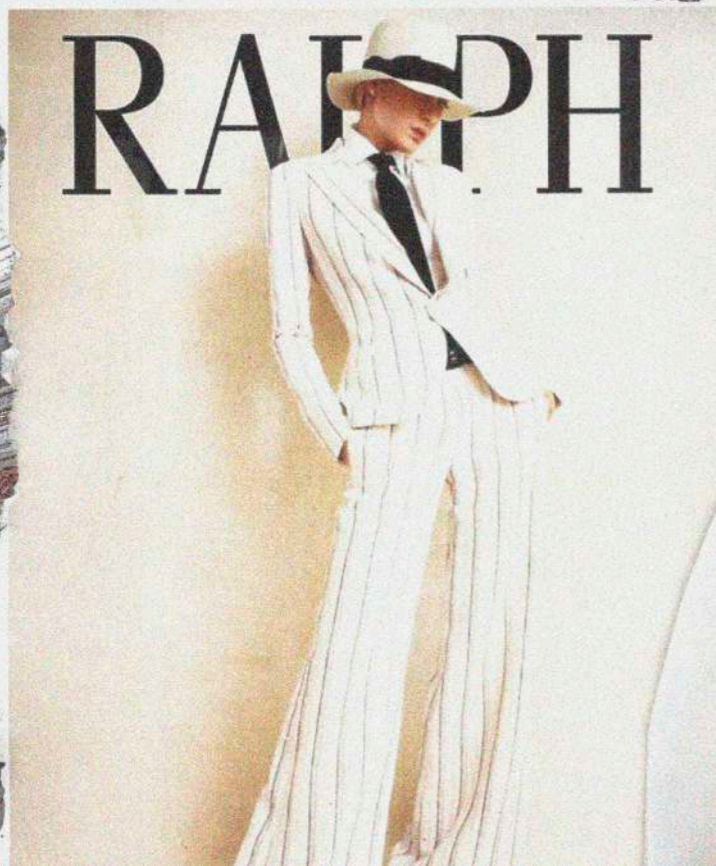


romantic
ROGUE

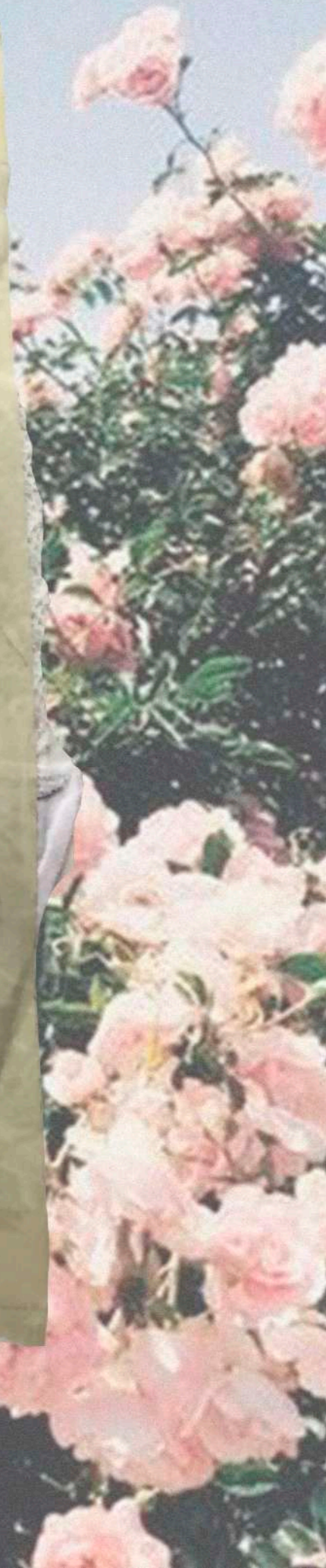
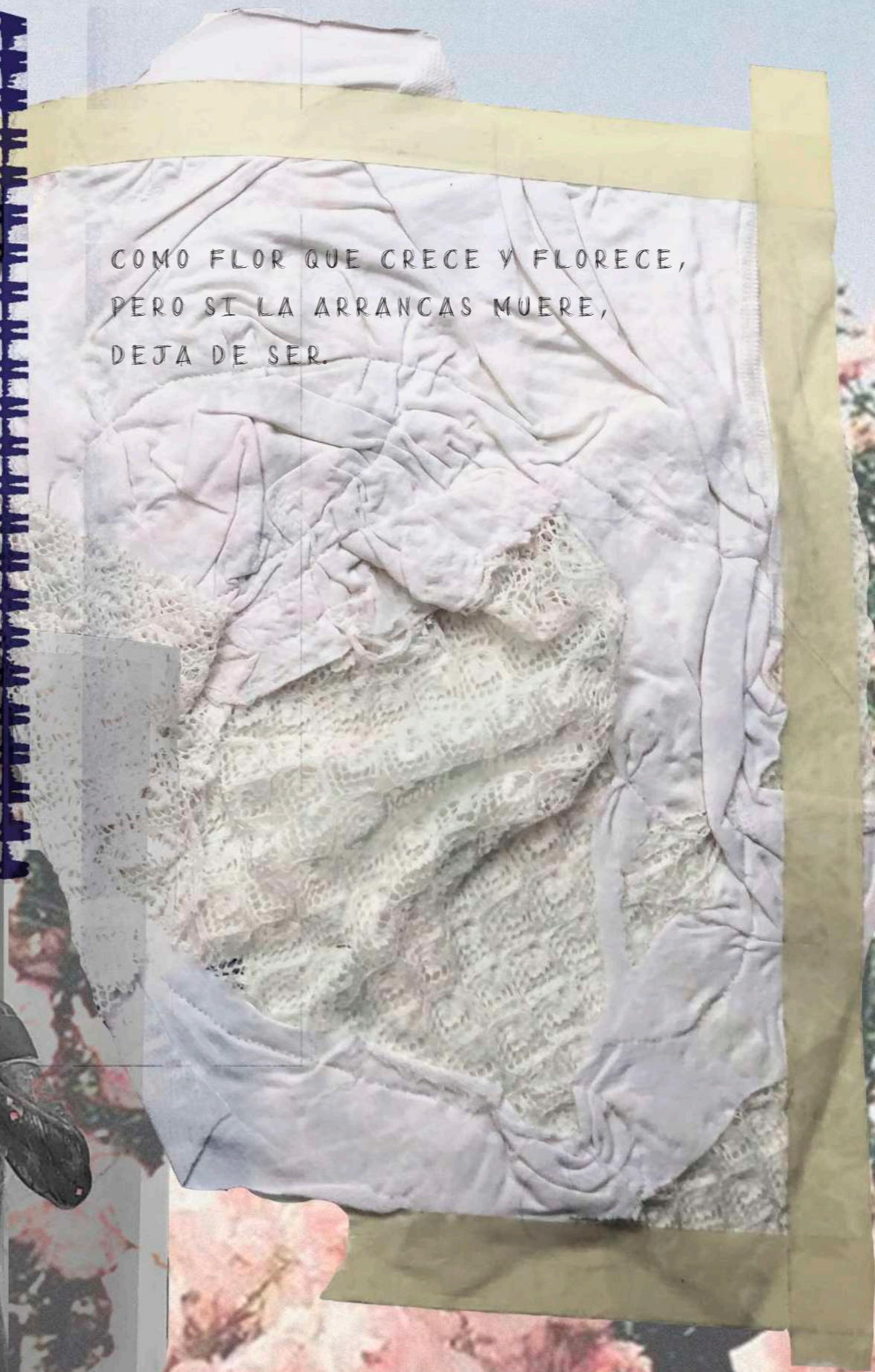
PAULA SALVATELLA







COMO FLOR QUE CRECE Y FLORECE,
PERO SI LA ARRANCAS MUERE,
DEJA DE SER.



6986/5271

ALEJANDRIA 1

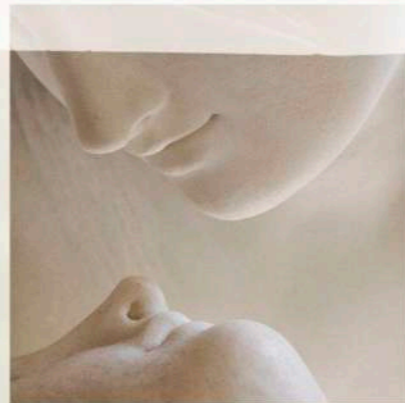
SOLITAIRE

ERICE



SENTIDO HECHO DE CAOS
 "REUNIDO DE ENTRE EL AIRE"

male of chaos
 'gathered from the air'
 And every poem 'a raid on the inarticulate'
 And all about to fall
 poet and poem and wall and all
 back into it

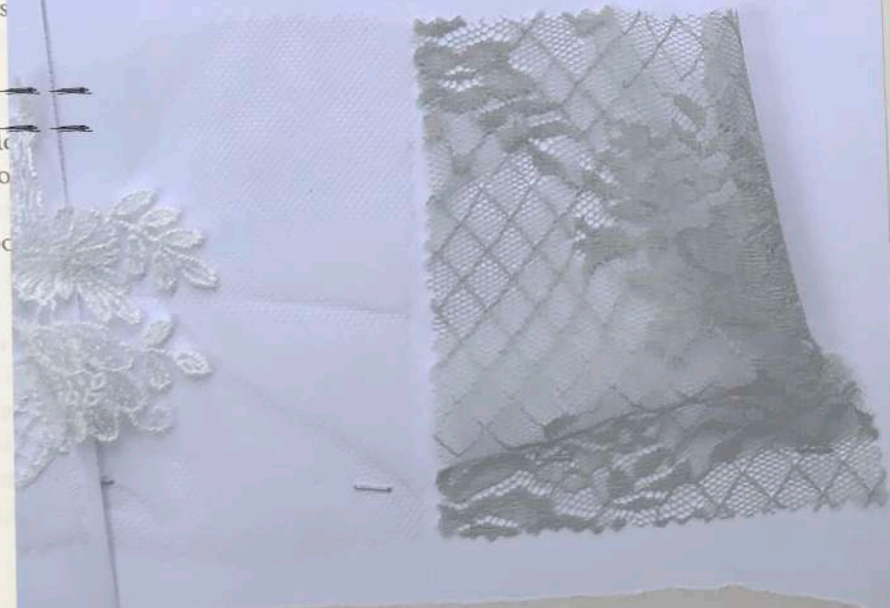


Y cada poema una pintura
 de una exp
 sobre un muro
 Colores
 cap
 Sonidos compues

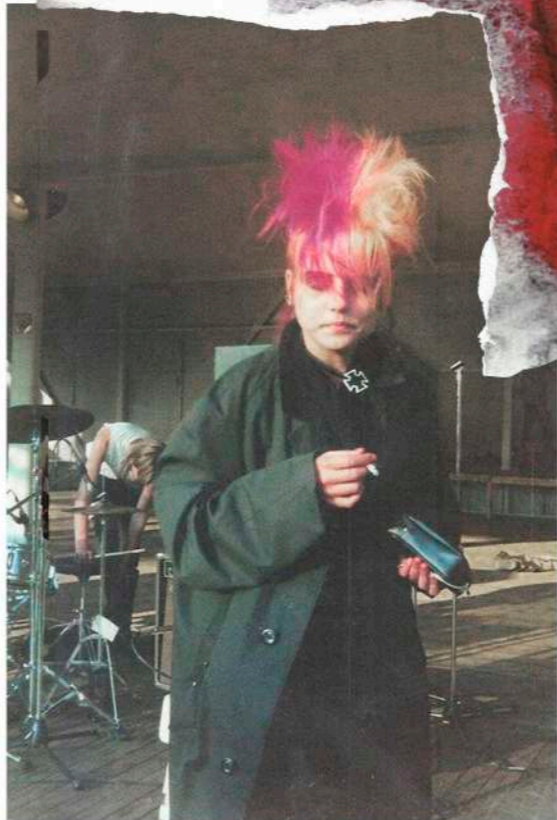
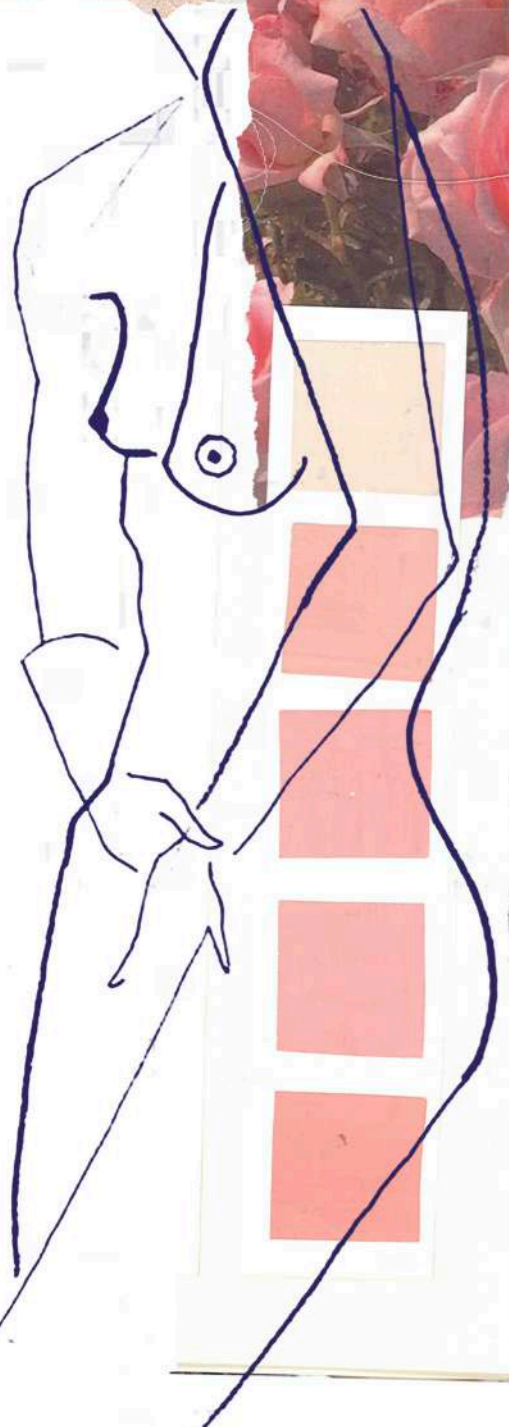
Sentido
 hecho de caos
 «reunido
 Y cada poema «un asalto a lo
 Y todo a punto de caer
 poeta y po
 de vuelta adentro

Comp.: 65CO 20PA 19PL
 Larg./Peso: 165cm / 118,8g/m
 Cantidad: 1,3m
 Price:

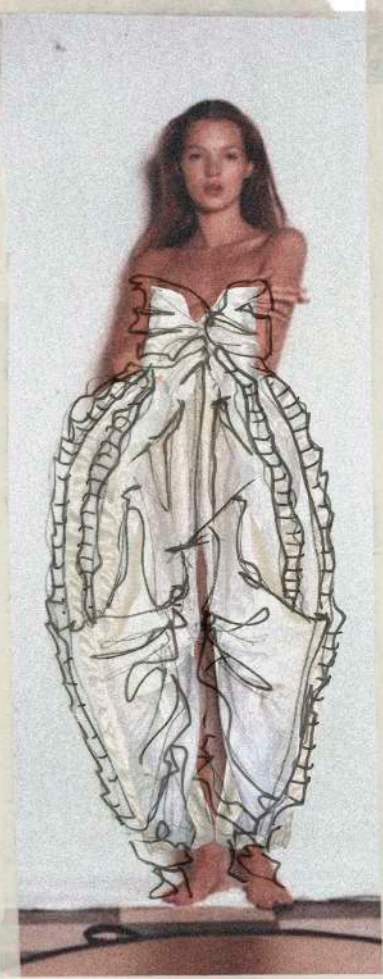
La
 Cantidad:
 Price:
 
 scan & order
 www.fabrics-house.es



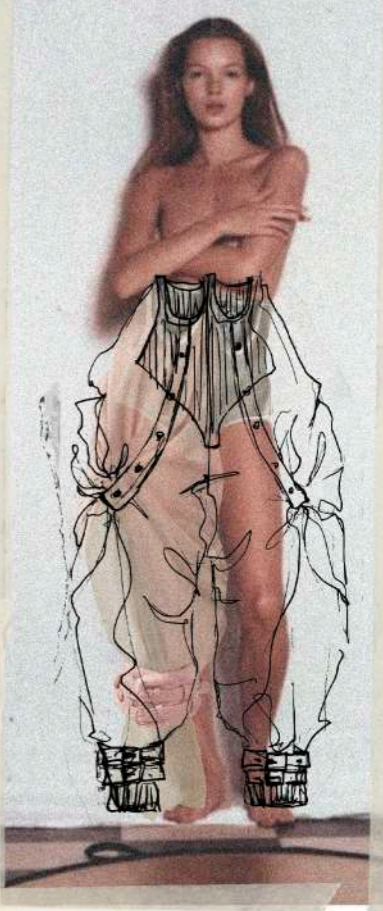
CONTENIDO
 03/0017
 23/11/02
 TILA BOSCHARD
 Barcelona
 10094 PL



**ART SHOULD
COMFORT
THE DISTURB
D AND
DISTURB
HE COMFOR
TABLE**

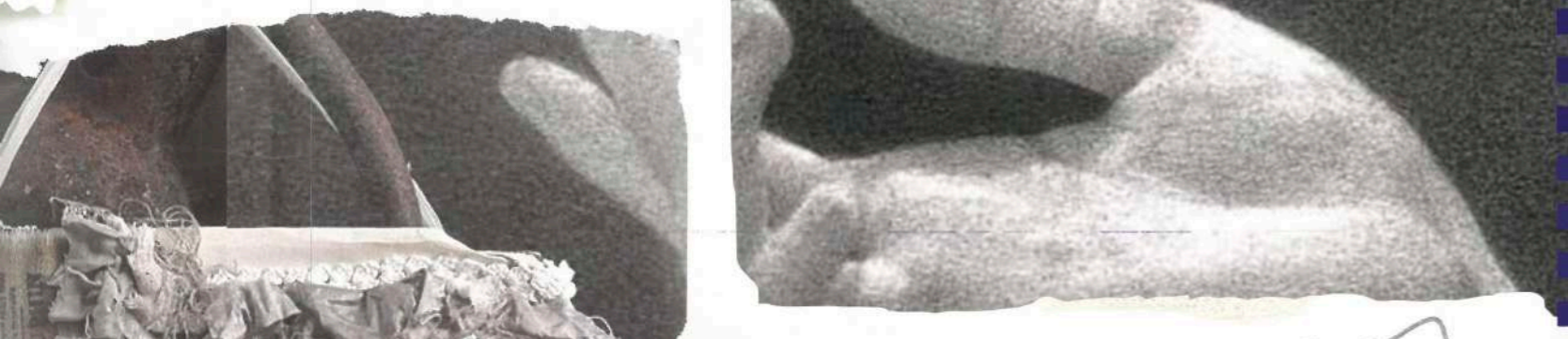
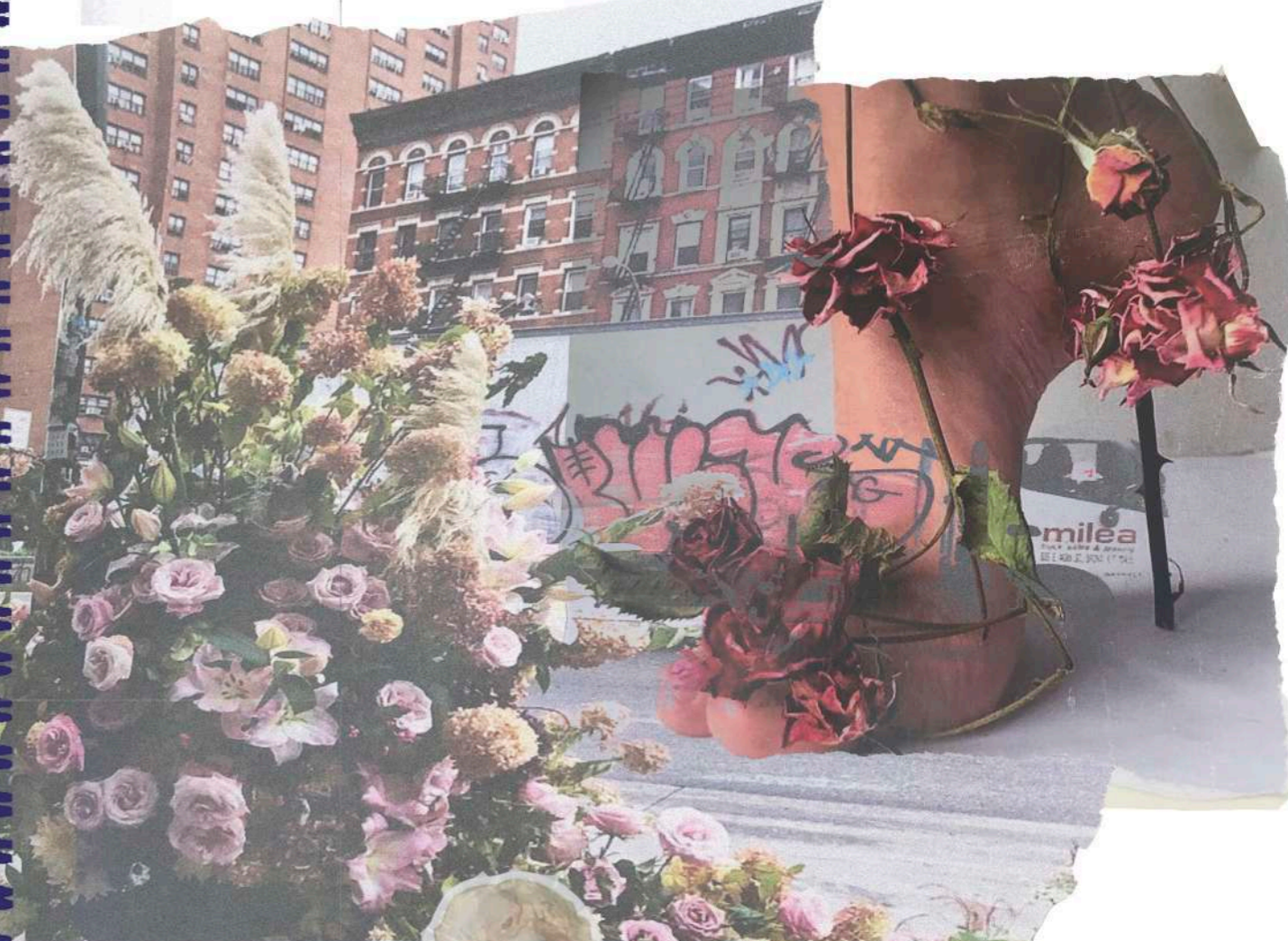


VOLUMENES DRAMÁTICOS EN LA CADERA

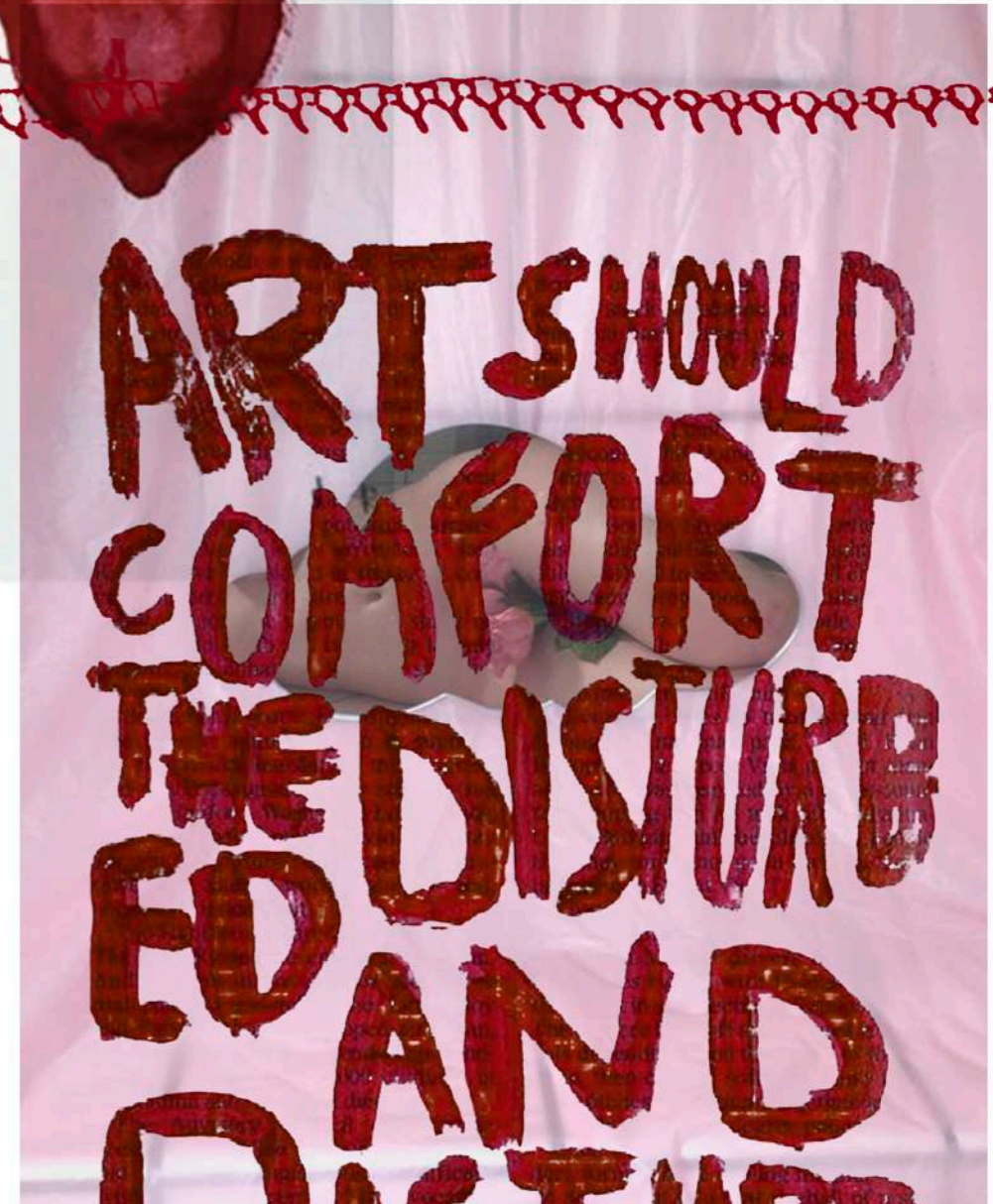


har·mo·ny
/'hɑ:məni/

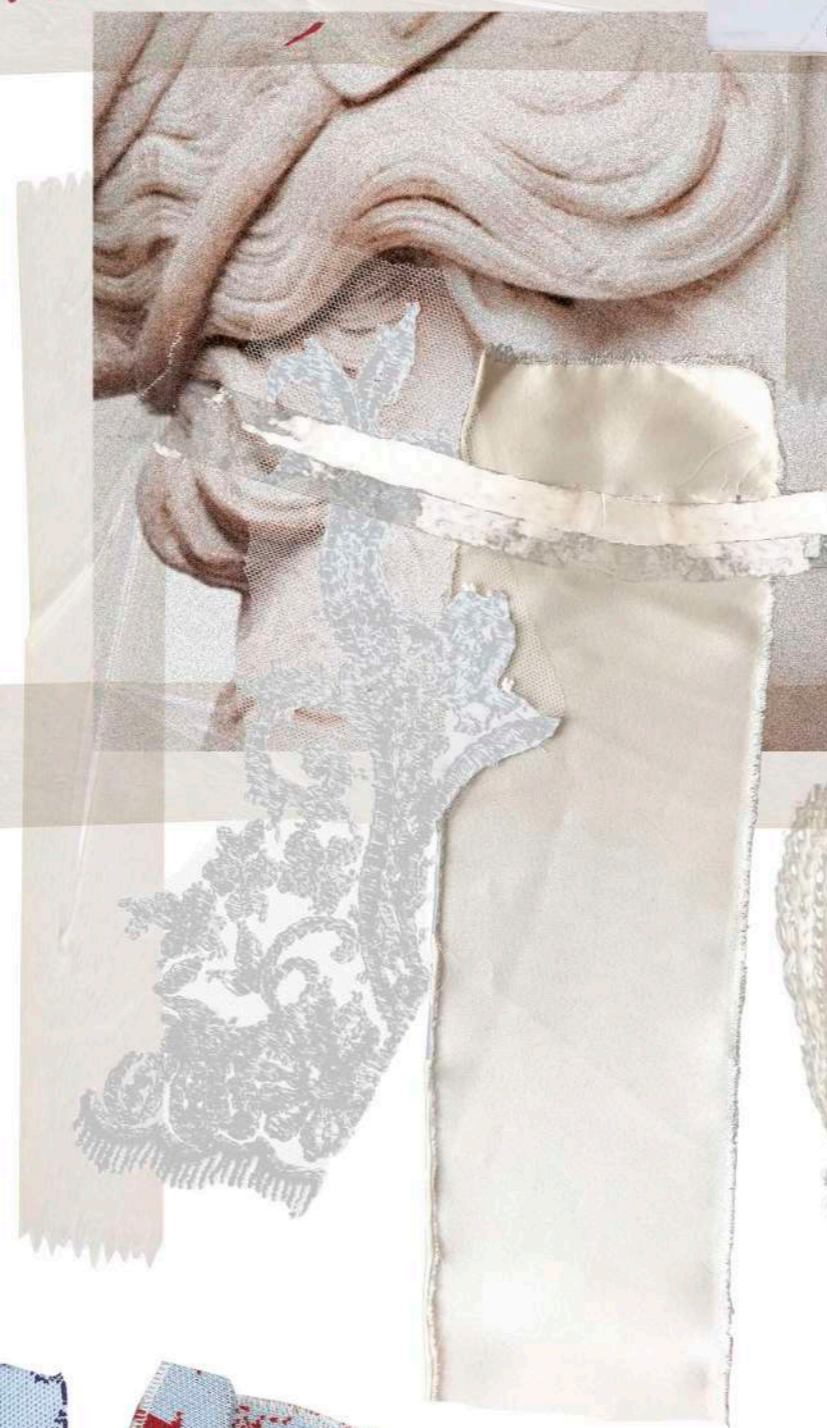
- 1. If I could sing down the stars for you, but all I have are my door
knobs, the city streets give us enough on which to tread ourselves
all the old library books, dogwood petals, newspaper cones of
franch. Plus that we could ask for all the fresh starts, did you know
you look beautiful in the light too?
- 2. & in some future my apartment has art on every wall & yours rise
a claw-footed tub full of bubble bath. In the room we contend with
spilling a fresh peach & dreaming progress will be joyful yet
however slow. our laughter rises like birds, there are so many
different tomorrows.
- 3. & you want to find peace with yourself, to move forward, to blaze
in the way that only angels or comets can.
- 4. I want to hope so fiercely it will be the one thing this tender earth
remembers of me after a thousand years pass.



CARTA DE COLORES



ART SHOULD
COMFORT
THE DISTURB
ED AND
DISTURB
THE COMFOR
TABLE



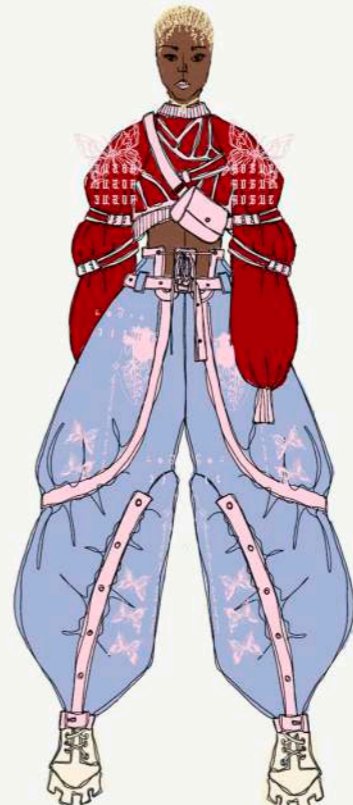
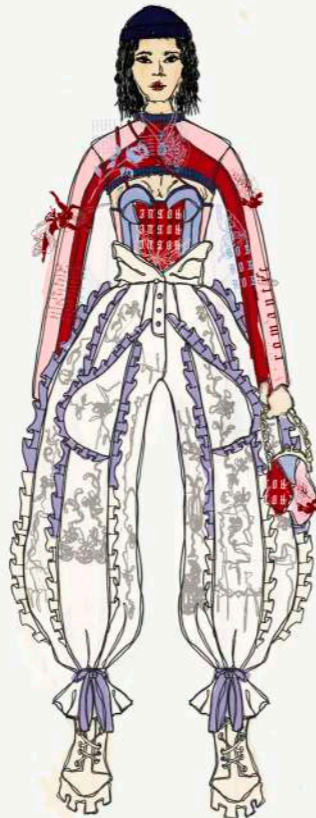
ERICE SOLITAIRE ALEJANDRIA 1 595/5271

CARTA DE TEJIDOS

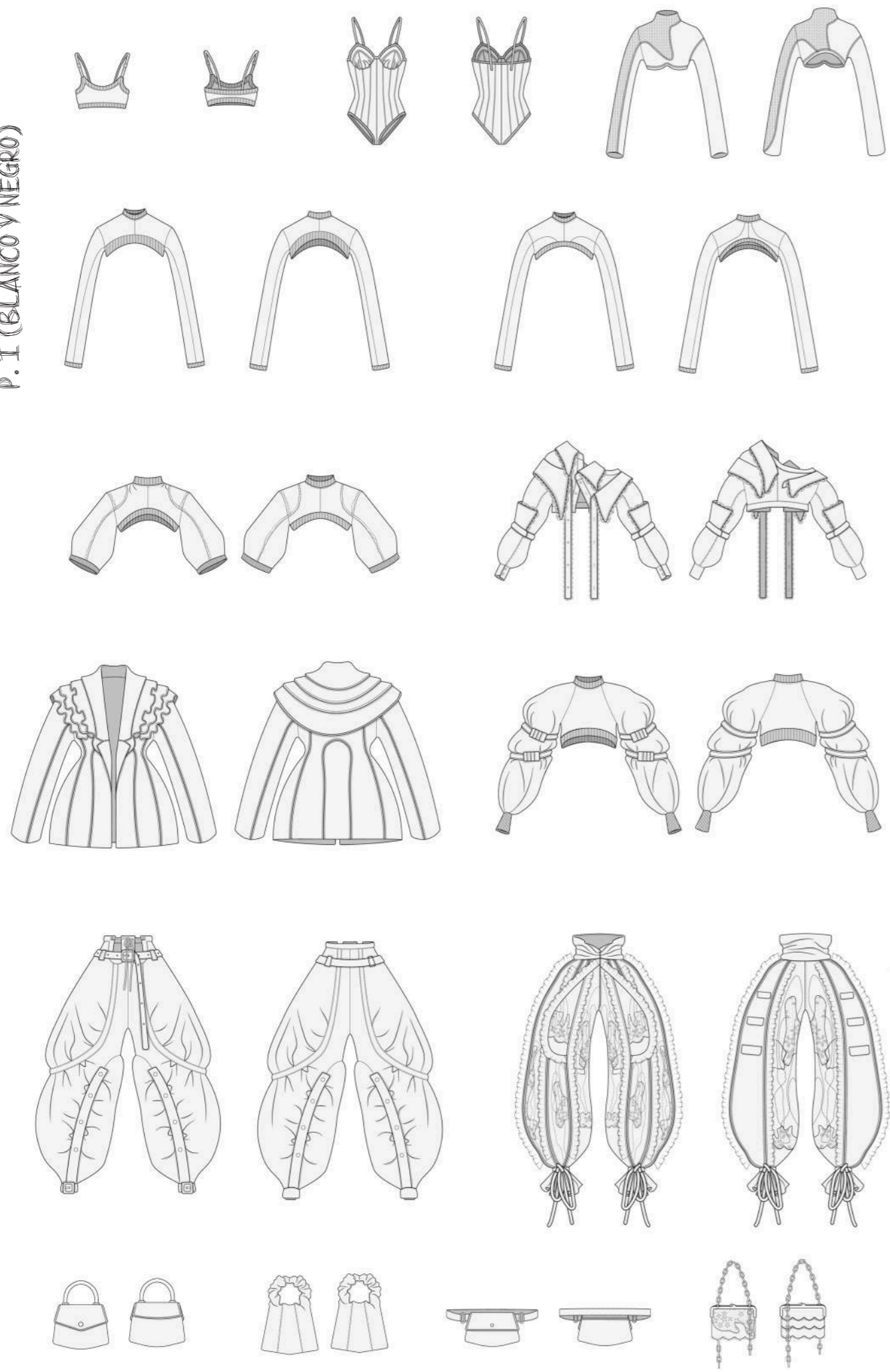
MADE IN ITALY 100 DOUBLE FACE WARM

MADE IN ITALY 100 DOUBLE FACE M

LINE UP

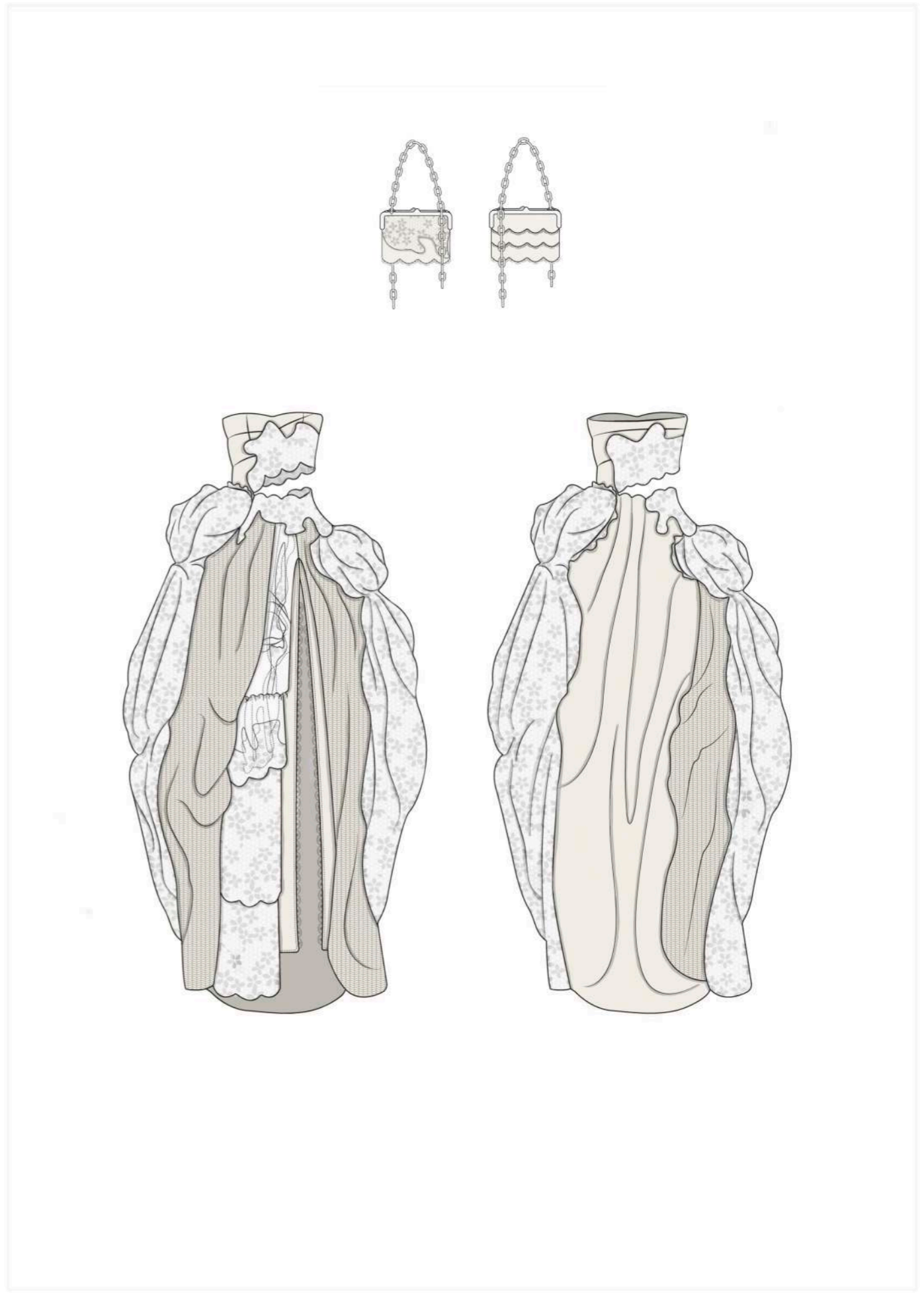


CUADRO DE COLECCIÓN
P. I (BLANCO Y NEGRO)



CUADRO DE COLECCIÓN
P. II (COLOR)



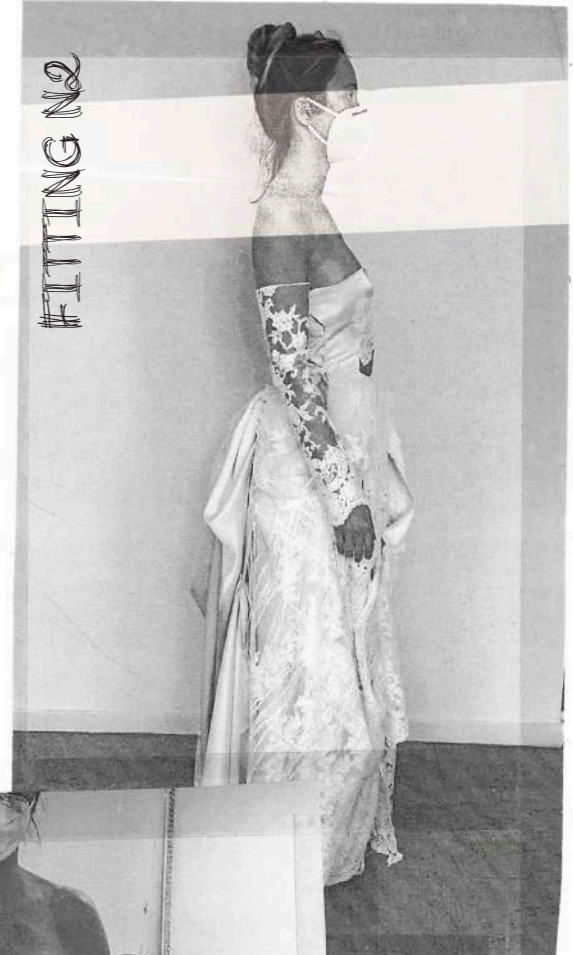


#FITTING N1

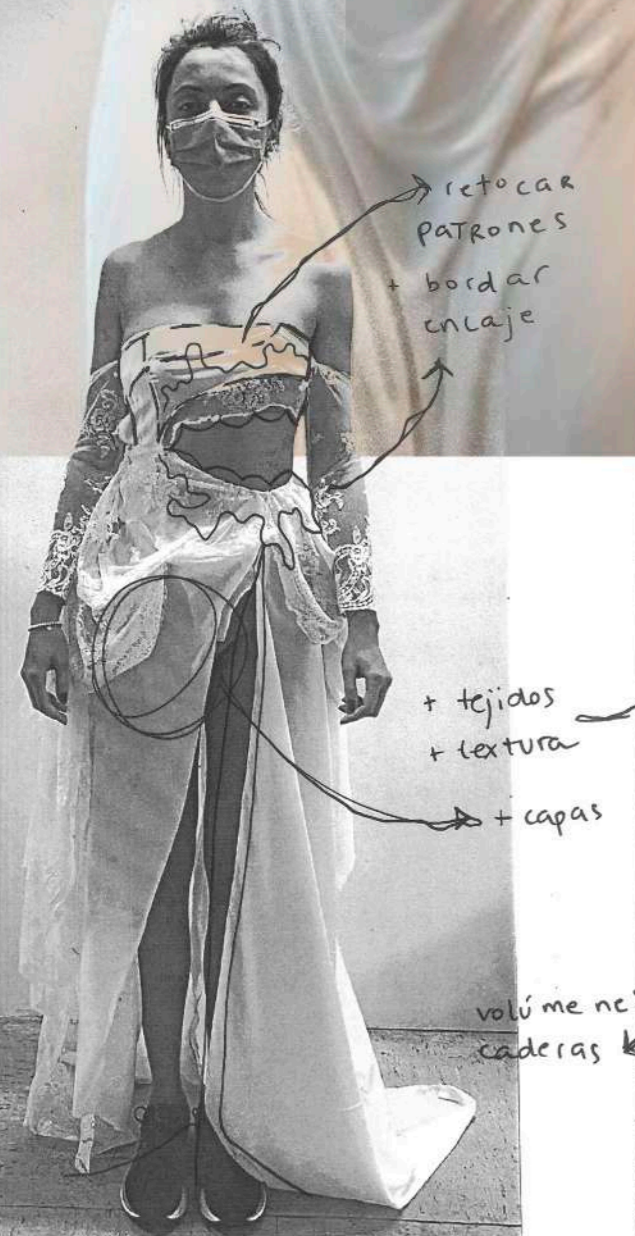


ENCAJE

ANADIR
BASE
PARA ES-
TRUCTURA



#FITTING N2



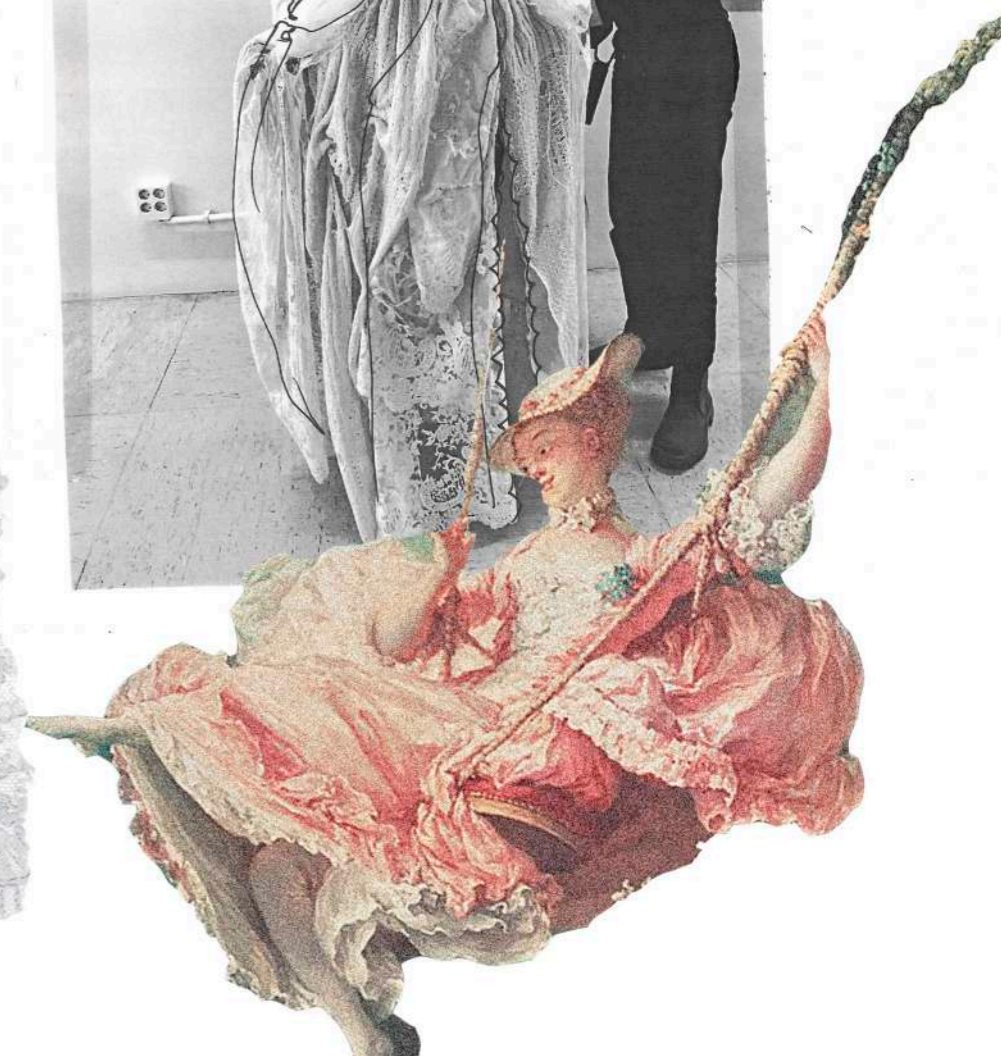
retocar
PATRONES
+ bordar
enlaje

+ tejidos
+ textura
+ capas



umentar
espalda

volúmenes
caderas



LOOKBOOK Y DETLLES

001

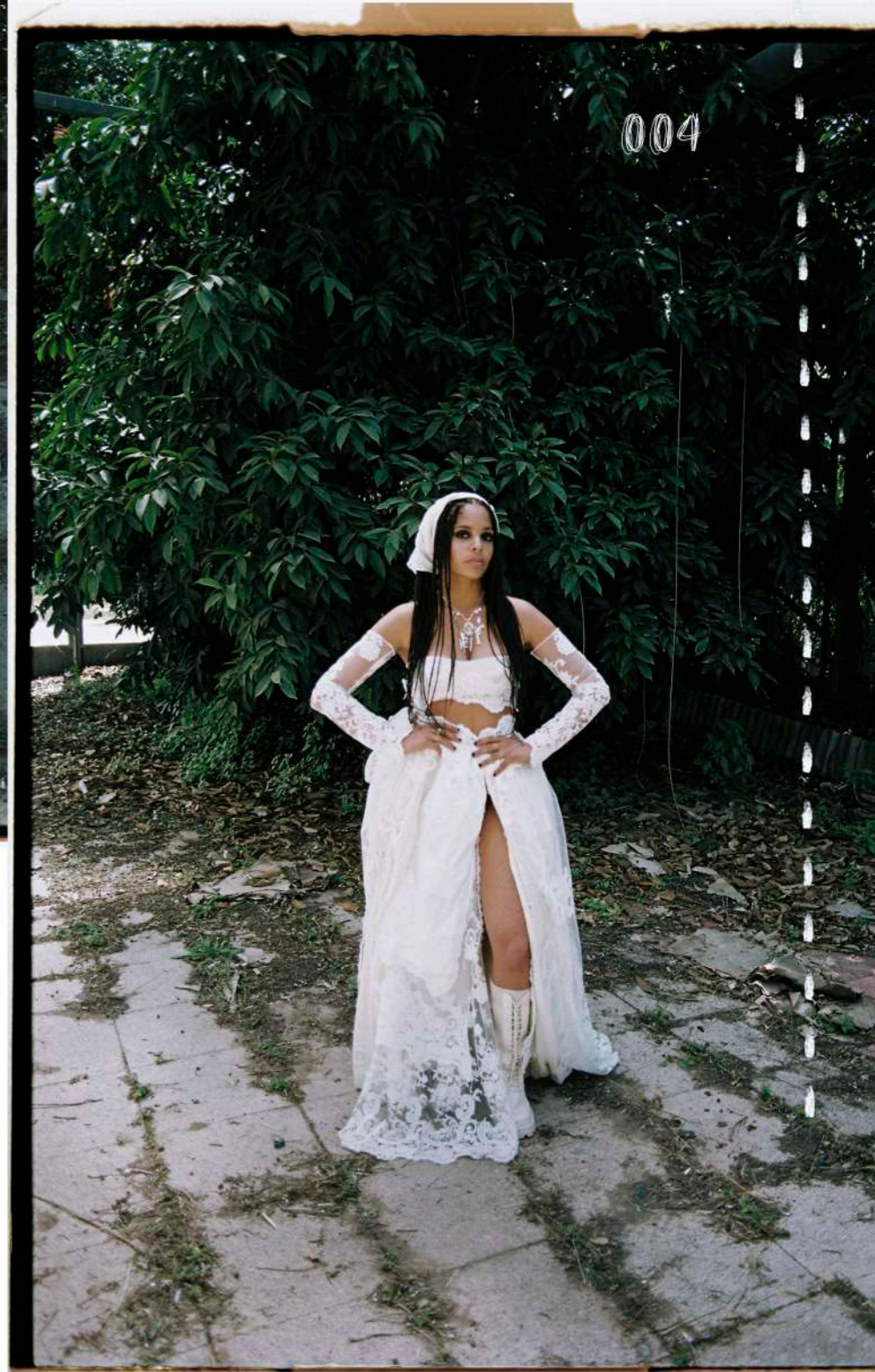


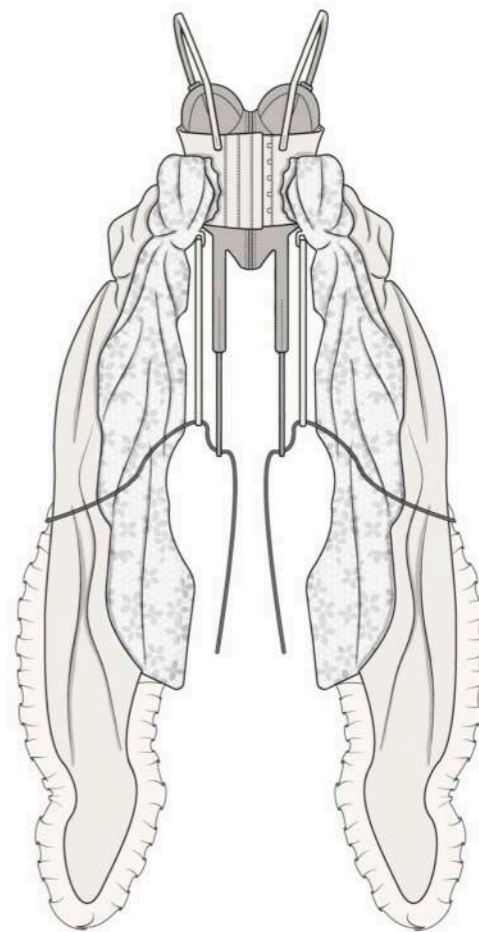
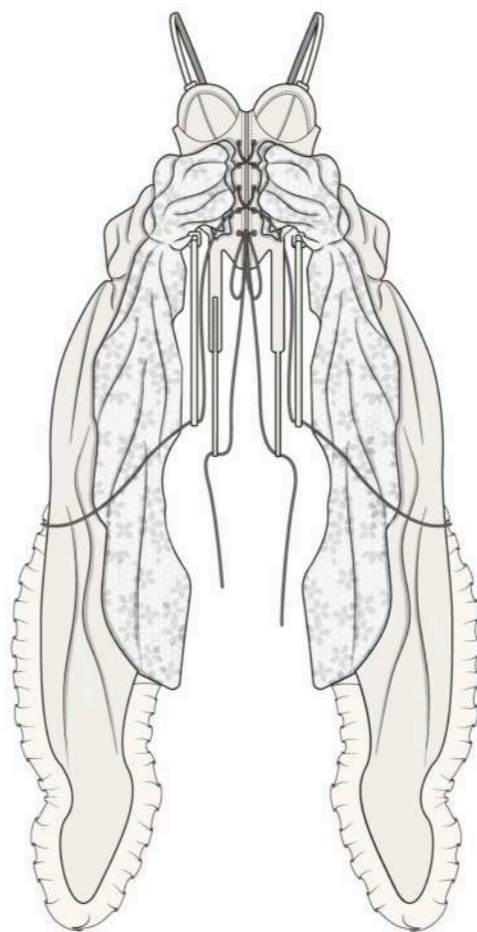
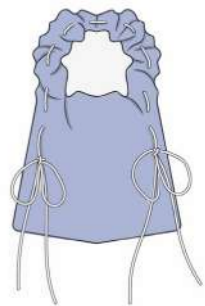
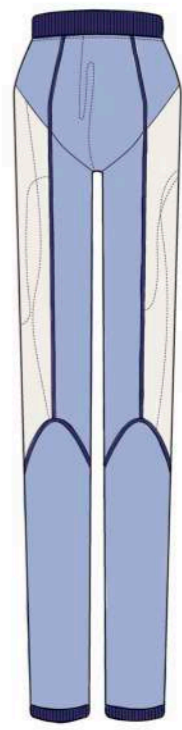
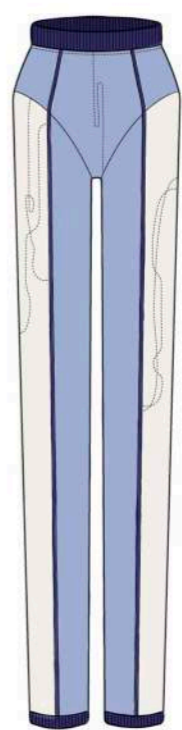
003

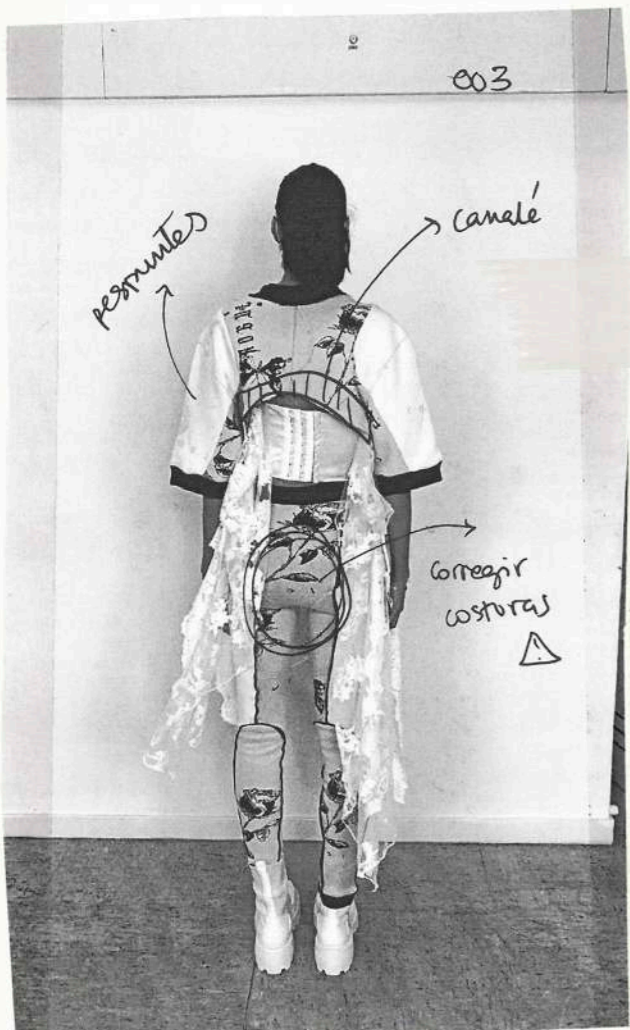
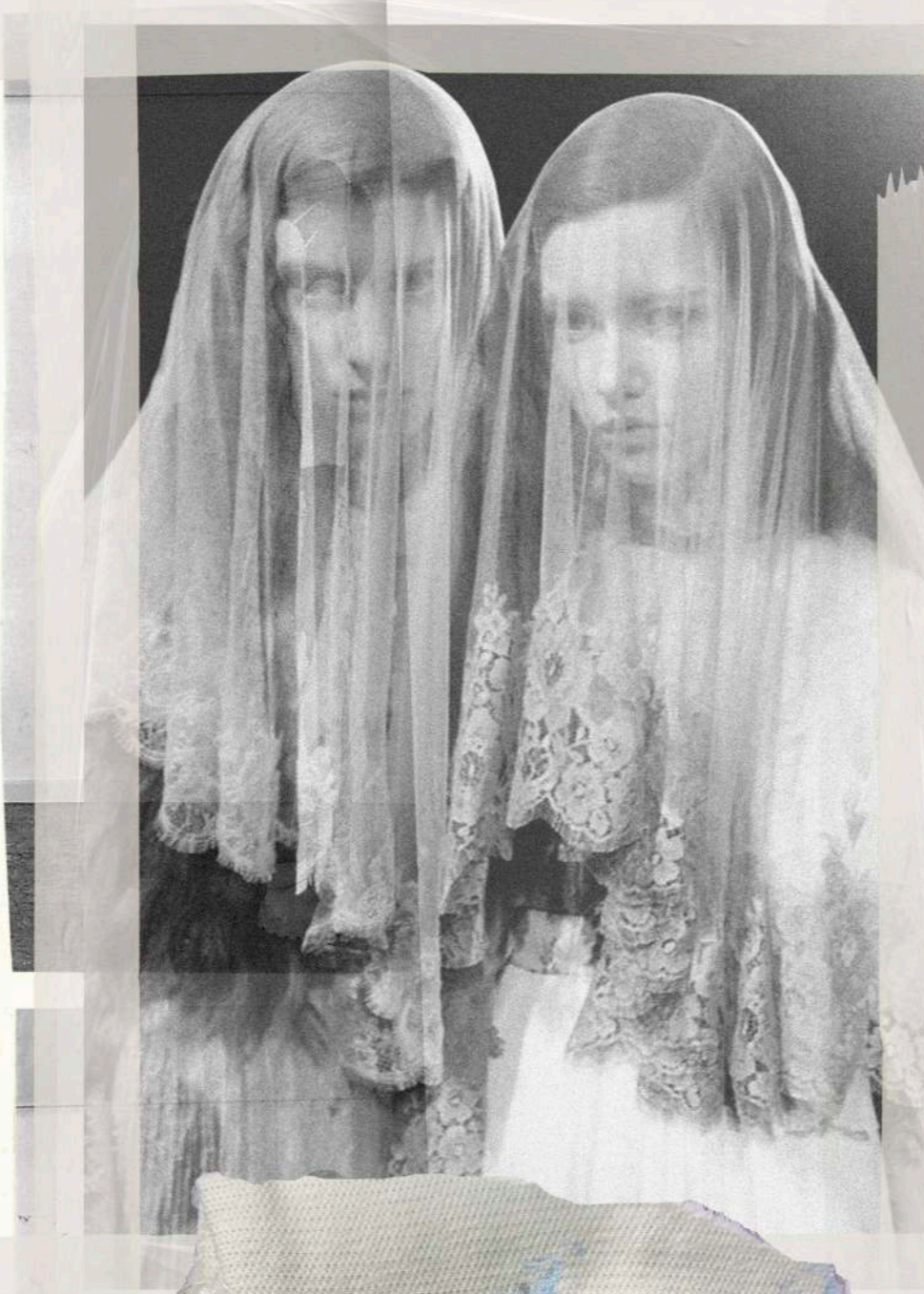
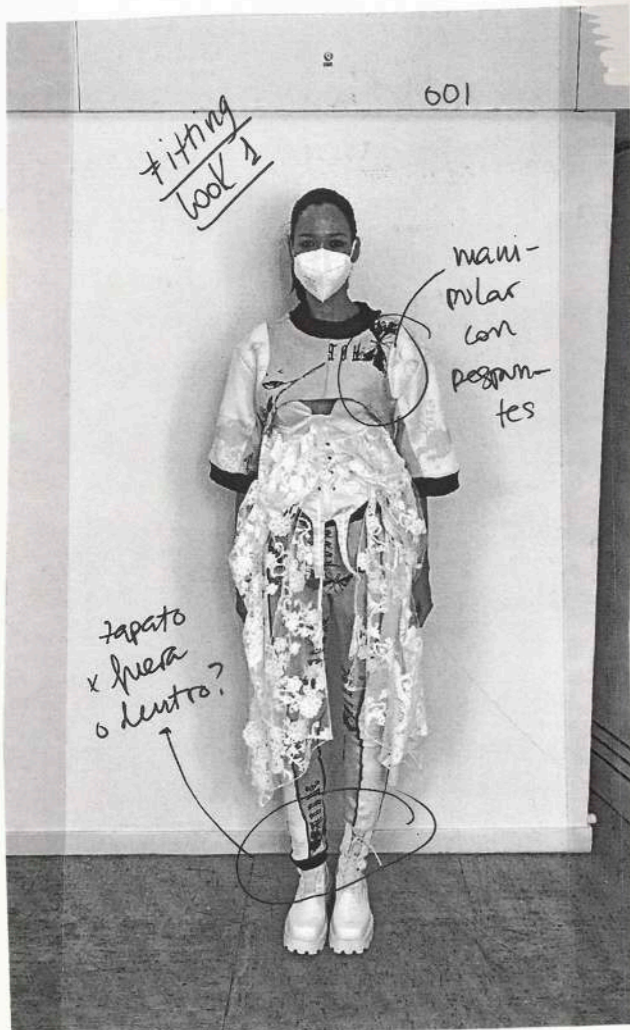


002

004





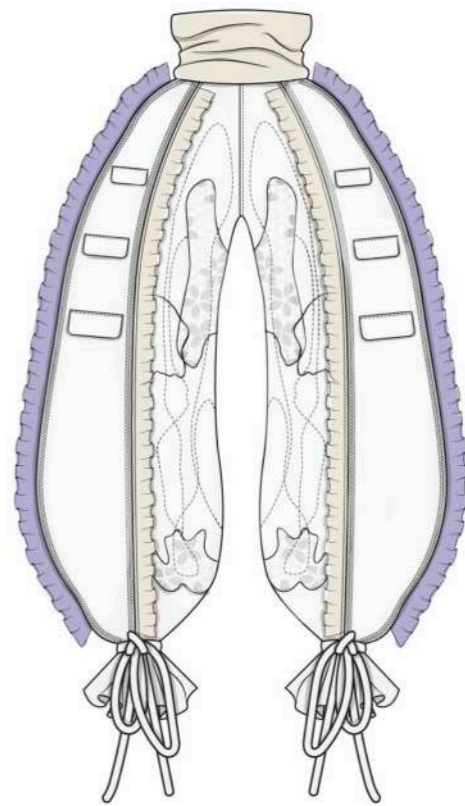
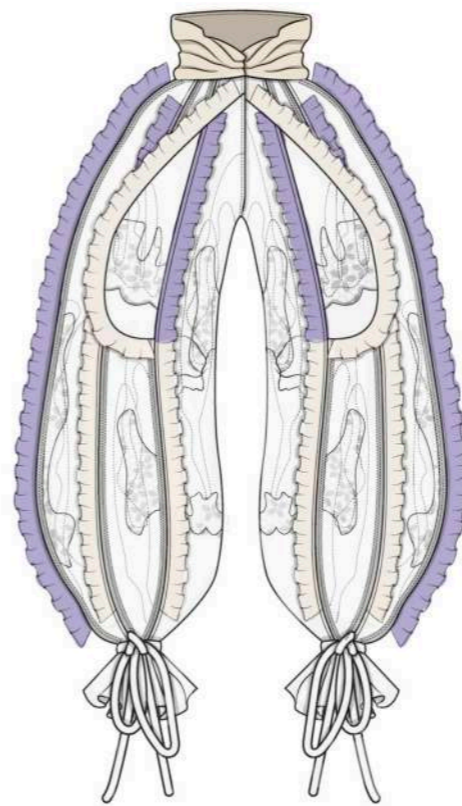
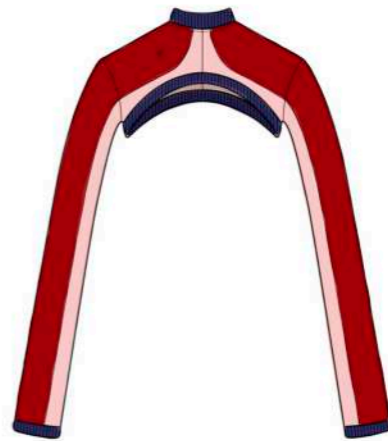
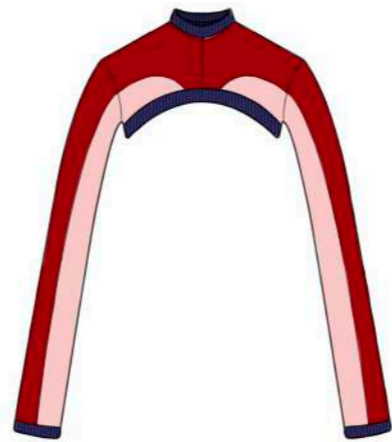
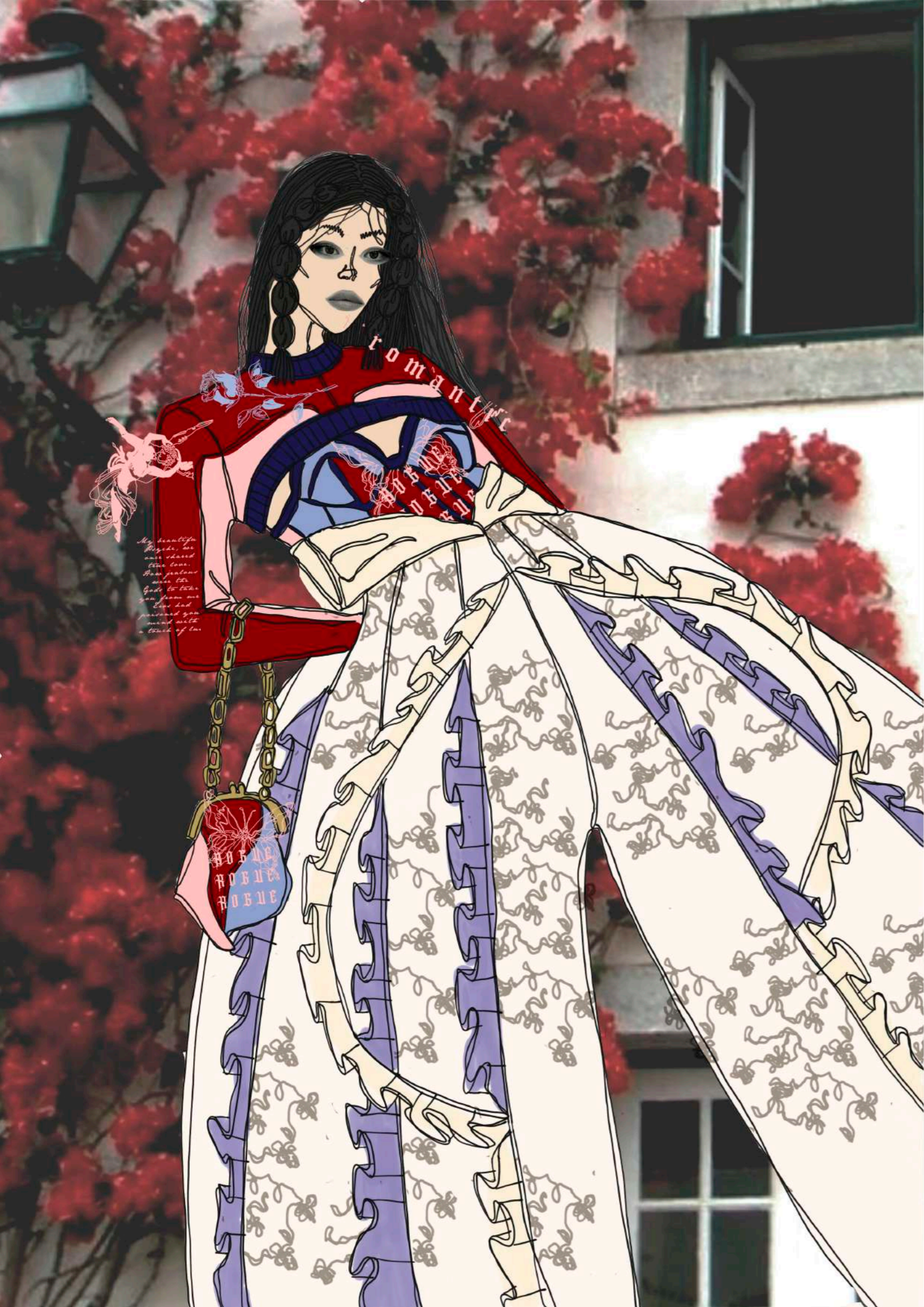


005

006



800-200





PATCHWORK
JACQUARDS

bolsillos

MANIPULACION
DENIM & LACE

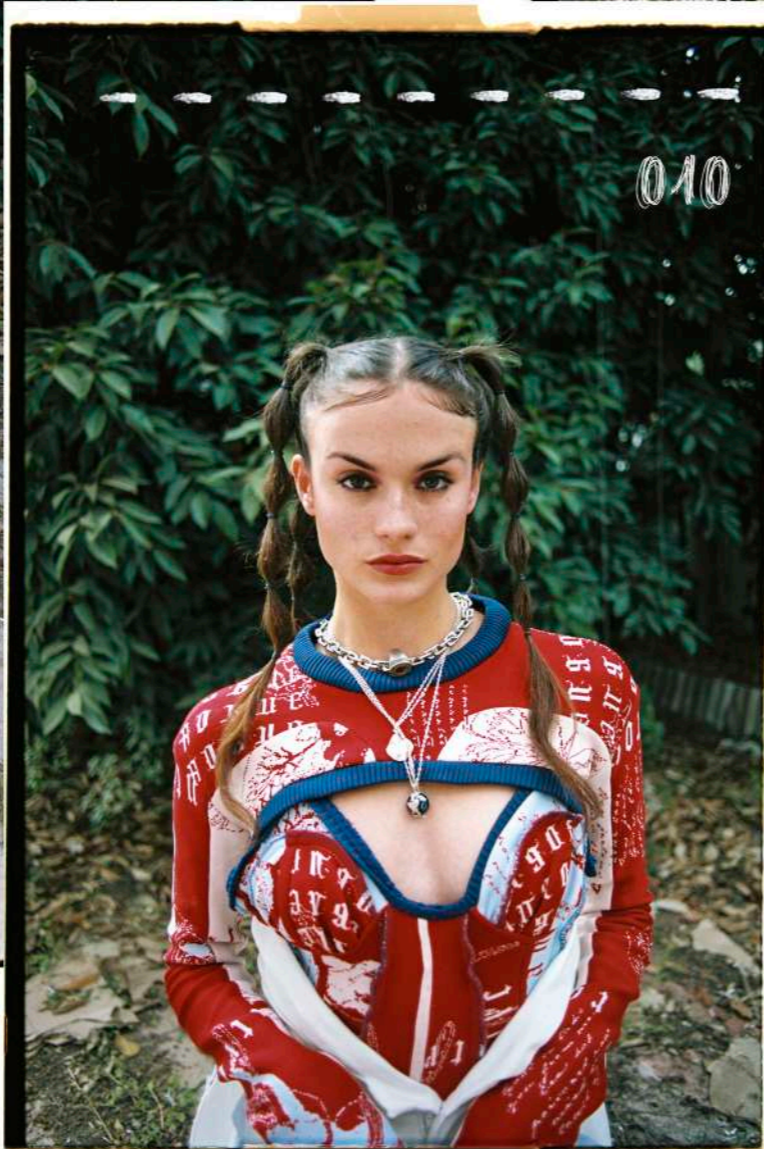
#FITTING N2

LOOKBOOK Y DETALLES

009

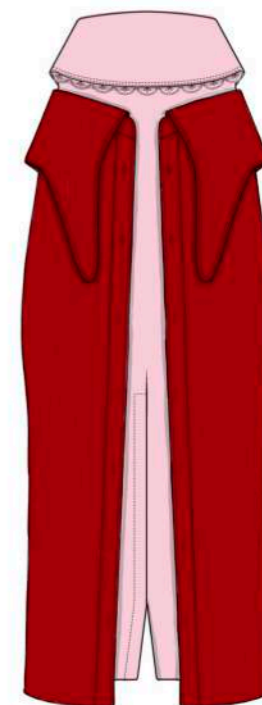
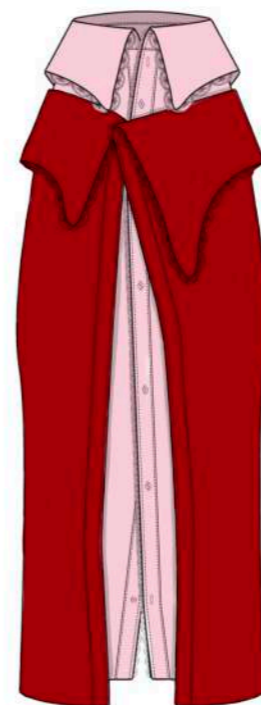
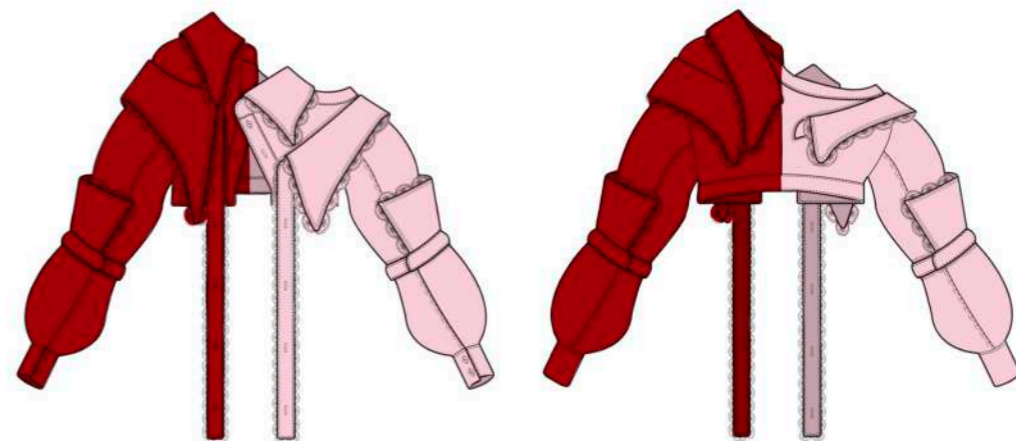
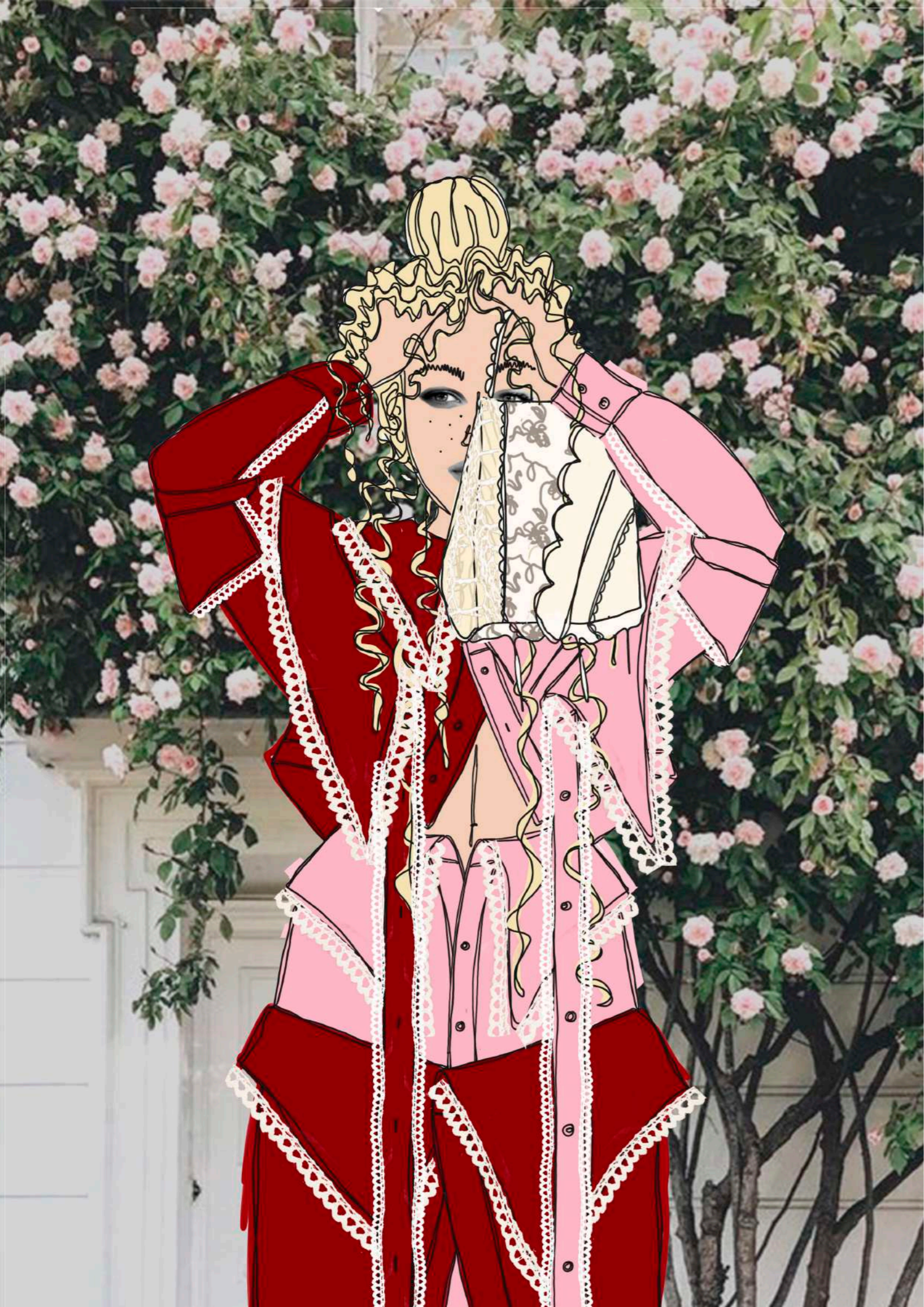


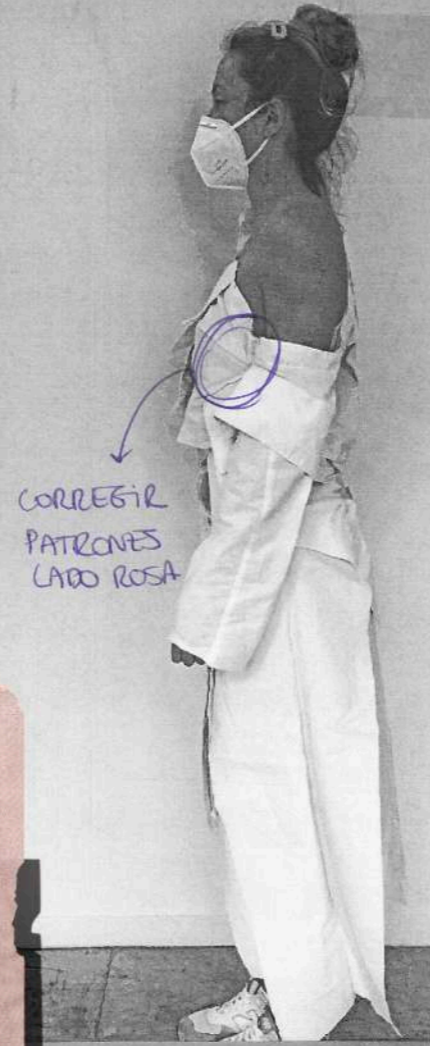
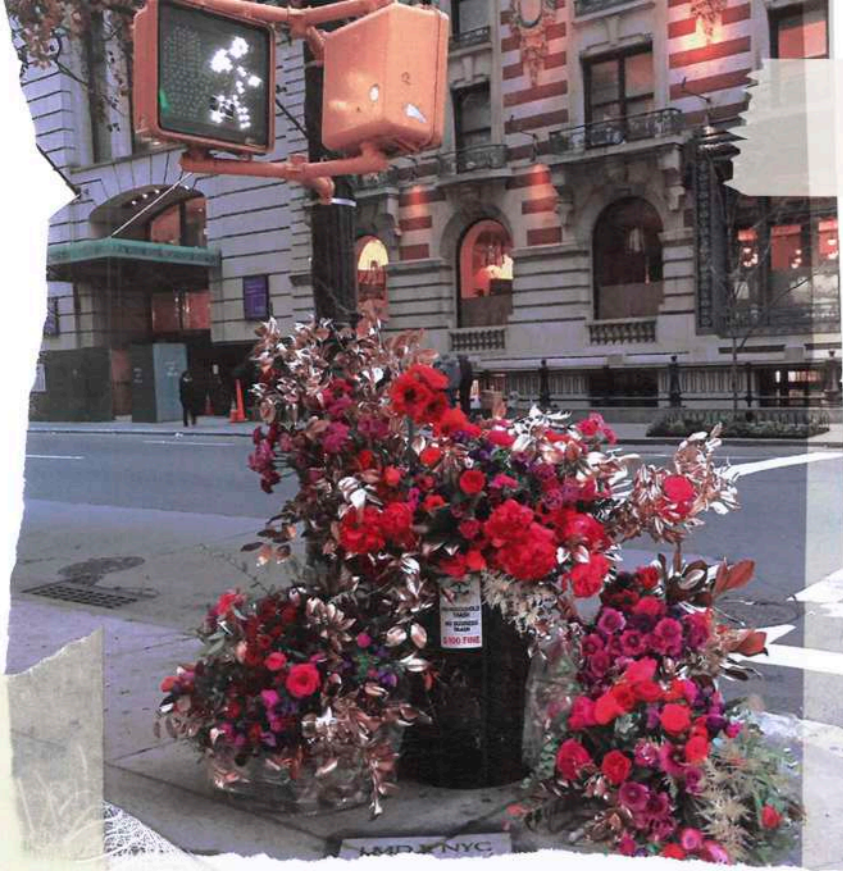
010



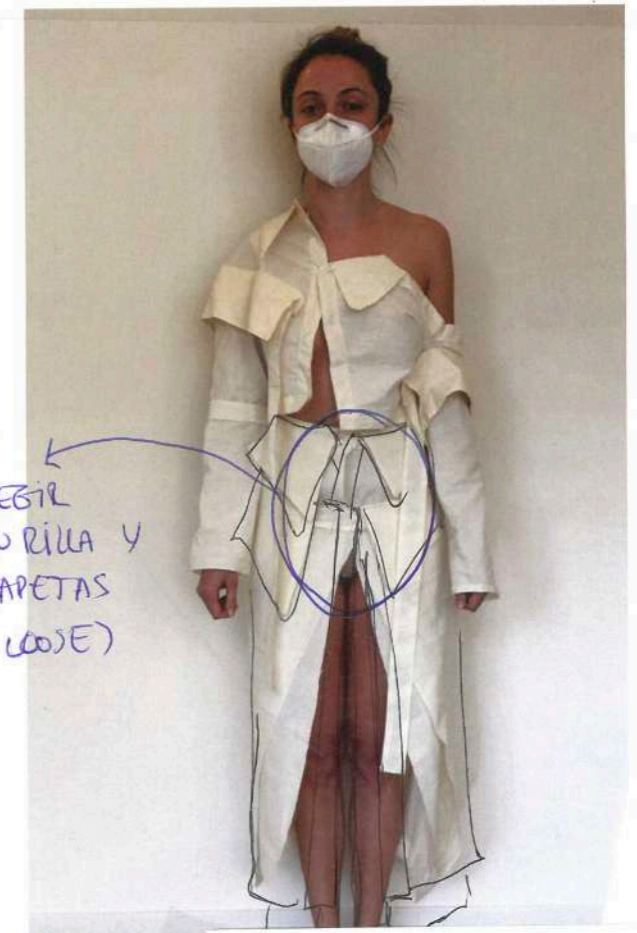
011-012



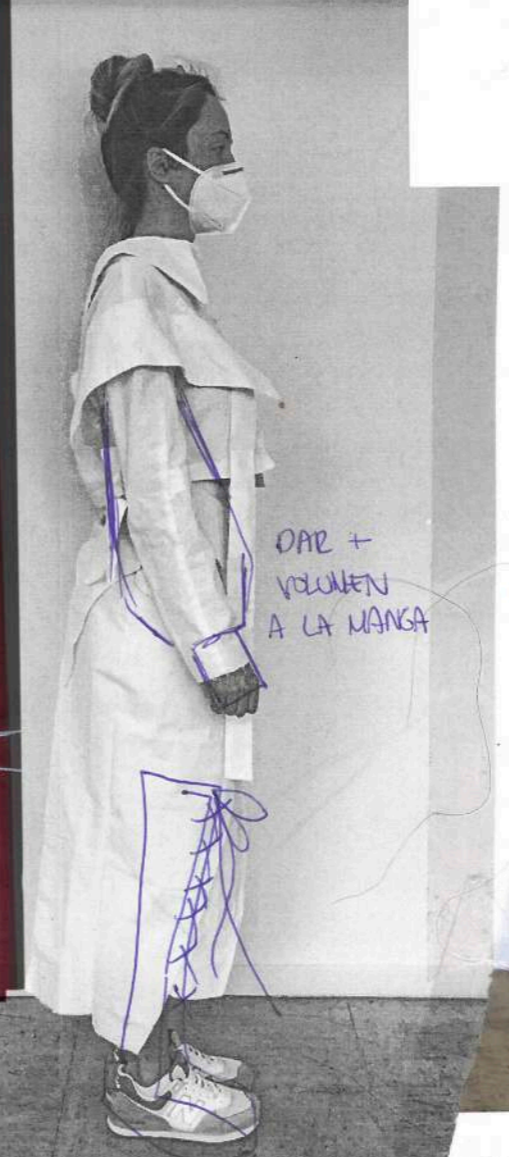




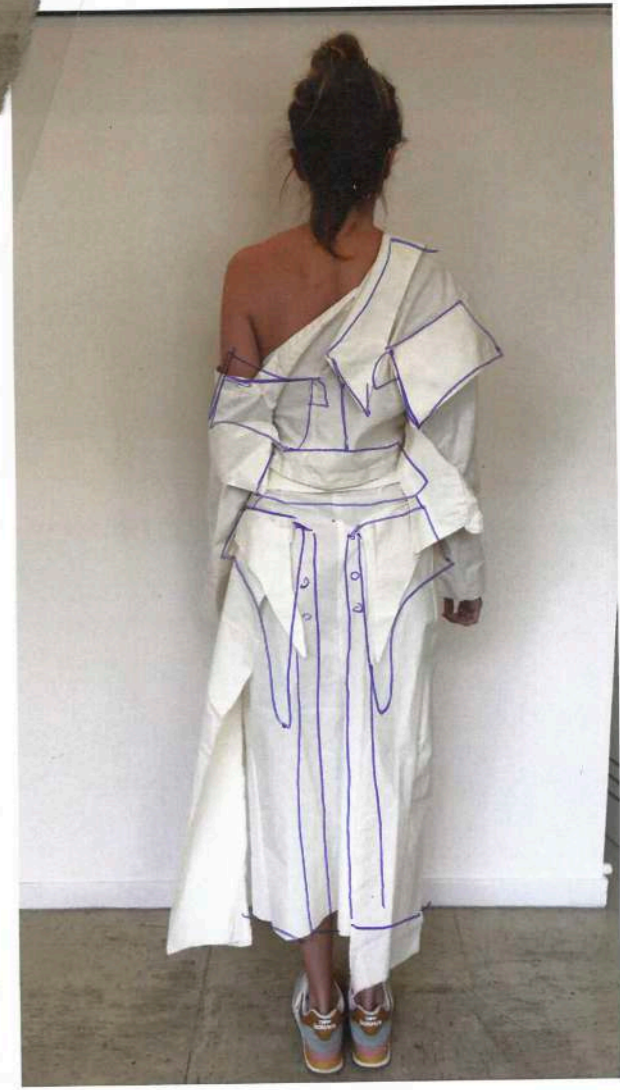
CORREGIR
PATRONES
LADO ROSA



CORREGIR
CINTO RILLA Y
TAPETAS
(+ LOOSE)



DAR +
VOLUMEN
A LA MANGA



LOOKBOOK Y DETALLES

013



014

015



016



