

ELENA MATSEDONSKAIA

**DEATH
IS A PHENOMENON
OF LIFE**

@ELENA.MATSEDONSKAIA



While creating this project, I watched human experiences when we lose loved ones, let them go physically, forever. We are going through difficult times, and we do not always have enough time to get over the loss. We need to move on, live, work, but being in society, we must live everyday life and adapt to reality, experiencing our loss within ourselves. Often such things are difficult to hide, and we accumulate emotions, but at one point, they come out, like a volcano erupting lava, cannot stop, so human grief also looks for a way out.

In my work, I decided to reflect this idea using on one side of the clothes ample folds, oversized sleeves, big flounces, and ruffles. I also chose to combine dense, heavy fabric with a light, airy textures.

Prints

The collection prints are inspired by the idea of the passing of time and the oldening of our bodies and objects that surround us. Therefore images of human skin have been printed, and fabrics have been manipulated with rusted metal. Fabric manipulations create an effect similar to aging. I have also created knitwear garments using open needlework combined with mismatched knits to emphasize the idea of loss.

Colours and symbology

The use of color has been an intuitive process completed with color symbology during the collection development. The colors chosen are pure colors full of saturation, burning red, and shiny cyan complement black and white. From time immemorial, white has been endowed with the properties of purification and divinity, and it symbolizes purity, innocence, lightness, joy. In the collection, white is often broken by fabric manipulations that soil its purity as pain hurts our souls. Colors act as color blocks, and the looks are presented monochrome, not mixing with each other, reinforcing the idea of contrast.

Red is the color of life, love, passion, fire, like a phoenix, burns in a flame and is reborn again. The color **black** is often a symbol of escape from earthly joys, death, grief, stress, mourning, ambiguity, mystery, and frightening unknown. fitted silhouettes contrasting them with exaggerated

From time immemorial, **white** has been endowed with the properties of purification and divinity. It's Symbolizes purity, innocence, lightness, freshness, dazzle, joy. It is a symbol of spirituality and clarity. **Turquoise** color is the color of heaven; it symbolizes lightness, airiness, purity, carelessness, tranquility prints from human skin with added rust, so I show how these emotions eat away at us from the inside how iron gets old, and people leave. I also use knitted things with imitation holes to reference the torture from suffering and worries to the soul. In my composition, there is one image that says that there is hope that everything will pass and you will be able to live on, for him, I chose a black coat with elements reminiscent of the clothes of priests, a stand-up collar, a modestly not defiantly closed collar. , A "lush white" dress with my print, a dress as a symbol of hope and faith that everything will be fine, otherwise it will be fine, you can't stop, and you have to go further.



Knitwear

Denim

Printed denim

Nylon

Silk

Poplin

Wool

Printed silk

Cotton



*Pantone -
7604C -*

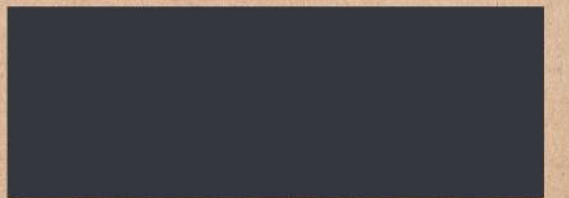
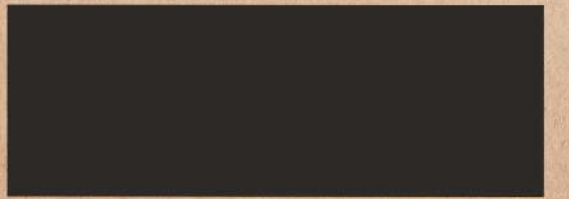
2347C

7547C

7805C

3172C

2995C



Mourning dress



Embroidery

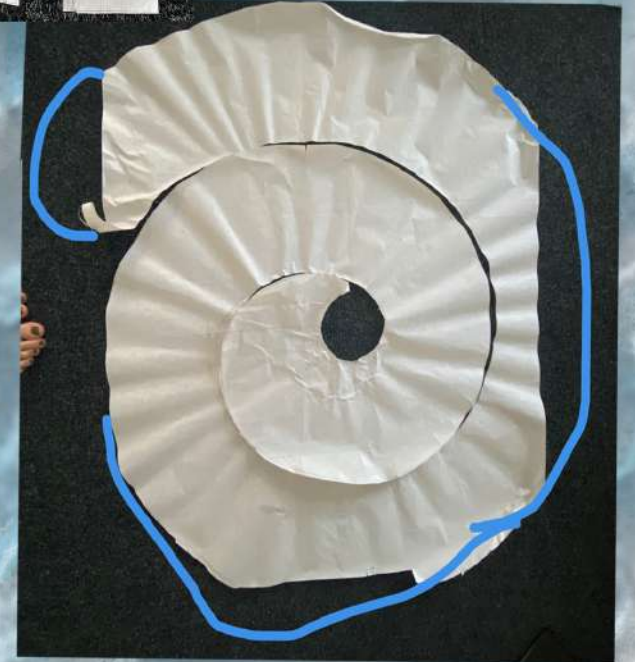
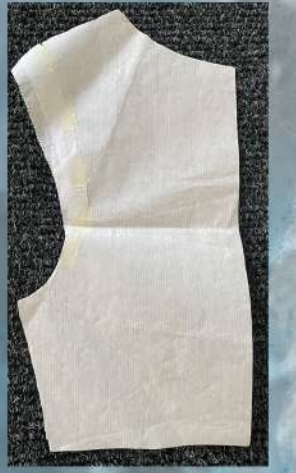


Cuff 11cm +
Sleeve 1 pattern









Ankle Boots Investigation

Silicone part



Studs + Silicone





0,8g iron
1 kg black tea
10 days in water

5m silk
15 days in water







