



"THE INTERNET HAS UNLEASHED THE MOST DANGEROUS WEAPON IN THE WORLD" —THE COLLECTIVE HUMAN MIND

WE LIVE IN UNPRECEDENTED TIMES— THE OPEN AND FREE EXCHANGE OF INFORMATION OVER THE INTERNET HAS EFFECTIVELY ERASED THE BOUNDARIES OF TIME, SPACE, LANGUAGE, AND RELIGION. MY COLLECTION'S GOAL IS TO HIGHLIGHT THE PRESENT AND FUTURE ISSUES THE INTERNET POSES TO SOCIETY AS A COLLECTIVE 'HUMAN MIND,' AND HOW WE CAN BE AWARE OF SUCH ISSUES TO BE BETTER EQUIPPED TO CONFRONT THEM IN THE FUTURE.

ONE OF THE KEY ELEMENTS OF MY COLLECTION THAT SPEAKS TO THE CONCEPT OF INTERCONNECTIVITY AND THE WORLD- WIDE-WEB IS THE HEAVY USE OF PRINTS. THE STARTING POINT OF ALL MY PRINTS WAS THE COLORS OF ETHERNET CABLES (E.G. PRIMARY COLORS BRIGHT YELLOW, RED, AND COBALT BLUE) ONCE THE COLORS WERE DECIDED. THE ABSTRACT SHAPES WERE COMPRISED OF DISTORTED IMAGES OF COMPUTER WIRES AND PETER BRUEGHEL (THE ELDER'S) 'TOWER OF BABLE' PAINTING. IT WAS MY INTENTION TO LAYER PRINT AND TEXTURE IN A VISUALLY COMPLEX WAY EXPRESSING THE VARIED NATURE OF THE SUBJECT MATTER I WAS SPEAKING ABOUT.

THROUGH MY RESEARCH I WAS EXPOSED TO THE IDEALS OF FUTURISM IN SCIENCE, IDEOLOGY, AND ART. THE ITALIAN FUTURIST OF THE EARLY 20TH CENTURY INFLUENCED ME GREATLY IN THE SHAPES AND VOLUMES ONE CAN SEE IN MY PRODUCED LOOKS. I WAS PARTICULARLY INSPIRED BY UMBERTO BOCCIONI'S, 'UNIQUE FORMS OF CONTINUITY IN SPACE,' SCULPTURE WITH ITS TWISTED UNDULATING CURVES THAT BLUDE TO A HASTENING OF TIME, SPACE, AND PROGRESS. IN FACT— SOME OF THESE SWOOPING SHAPES FOUND IN THIS SCULPTURE WERE DIRECTLY TRANSLATED INTO SHAPES OF DRESS LABELS, SLEEVE CUFFS AND SEAMS. LIKE THE FUTURIST OF THE PAST, VISIONS OF THE FUTURE HAVE A PROFOUND IMPACT ON HOW I PERCEIVE AND DESIGN.

THE THIRD ELEMENT OF MY COLLECTION THAT WAS INSPIRED BY TECHNOLOGY WAS THE CHOICE OF TRIMMINGS. LIKE PERSONAL COMPUTING MACHINES, MY FOCUS WAS ON THE UTILITY AND AN APPEARANCE OF INDUSTRIAL PRODUCTS. THE DRAWSTRING CORD IS HEAVILY USED IN MY COLLECTION— WHICH AGAIN IS INSPIRED BY COMPUTER WIRES. MY DESIGNS EVOLVED AS MY PROCESS WENT ON, AND LIKE TECHNOLOGY, I WANTED MY TRIMMINGS TO BE HEAVILY SYNTHESIZED. THE INTRODUCTION OF RUBBER SILICON ENDS ON ALL MY CHORDS IS AN EXAMPLE OF THIS SYNTHETIC TOUCH THAT REFERENCES THE WORLD OF COMPUTERS. FUNCTIONALITY AND USABILITY ARE TWO FUNCTIONS OF MODERN TECHNOLOGY THAT MAKE IT EASY TO HAVE THIS FREE AND EASY EXCHANGE OF INFORMATION; LIKEWISE, I WANTED MY GARMENTS TO BE REASONABLY STRAIGHT FORWARD, FUNCTIONAL, AND EASY TO USE. ALL MY GARMENT OPENINGS ARE VERY USER FRIENDLY AND NOT COMPLICATED. THE USE OF LACE OPENINGS IS COMPARABLE TO A TOUCH SCREEN— THAT BEING THEY ARE SELF-EVIDENT AND VERY EASY TO UNDERSTAND.

DIGITAL PRINTING VIA SUBLIMATION WAS HEAVILY USED IN MY ENTIRE COLLECTION WHICH LIMITED THE TYPES OF FABRICS I COULD USE. FOR THE AFOREMENTIONED REASON, ALL MY PRINTED GARMENTS ARE POLYESTER BASED TEXTILES. IN ADDITION TO PRINTING, I WANTED TO USE PERFORMANCE BASED/TECHNO FABRICS AS THEY ALLUDE TO THE SYNTHESIZED ETHOS OF MY COLLECTION. FOR EXAMPLE, THE OVERSIZED WOMAN'S TRENCH COAT IS MADE WITH STRETCH COTTON POPLIN AND ALL THE LININGS ARE MADE WITH A NYLON STRETCH TECH FABRIC. NEOPRENE IS ALSO HEAVILY USED THROUGHOUT ALL MY BASIC LAYERING PIECES SUCH AS THE BODY SUITS, RUNNING SHORTS, AND T-SHIRTS WHICH ARE IN-LINE WITH MY CONCEPT OF TECHNOLOGY. TO BALANCE OUT THE USE OF MAN-MADE FABRICS, I INCORPORATED DYED DENIM, SILK, AND SUEDE IN MOST OF THE FOUR LOOKS TO ADD A TEXTURE TO THE OTHERWISE "SLICK" TECH BASED FABRICS.

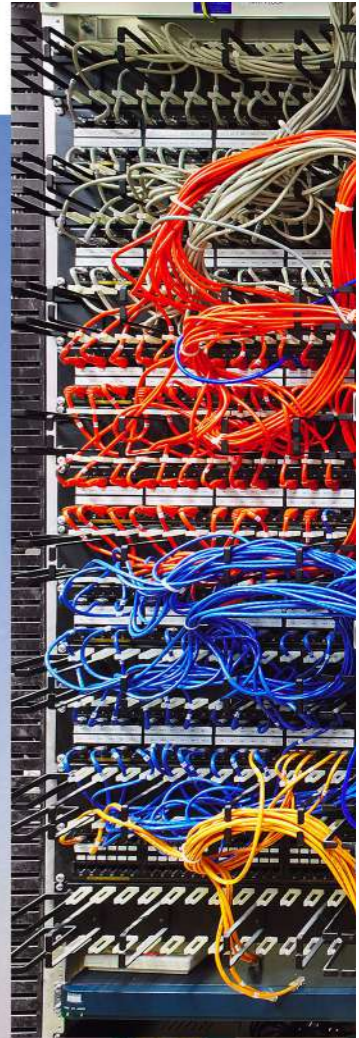
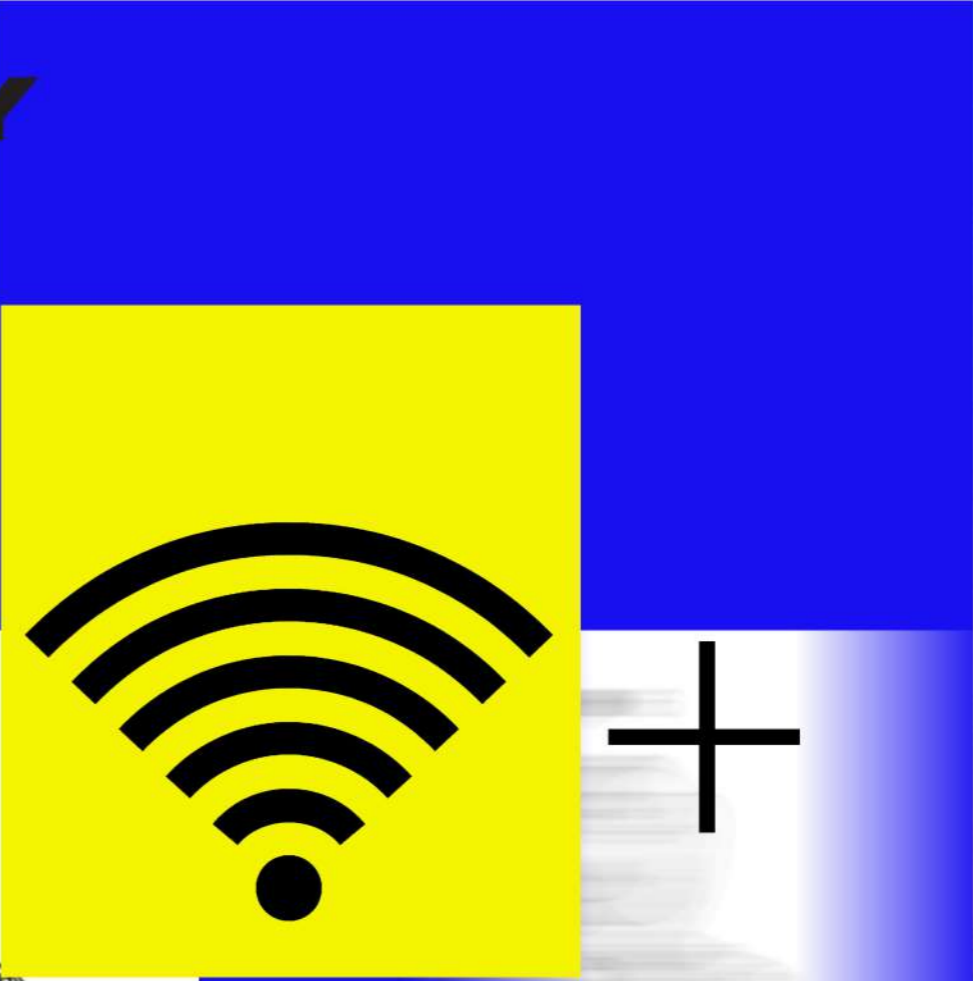
AS WE LOOK TO THE FUTURE, IT IS MY HOPE THAT WE CAN MEET THE VARIOUS CHALLENGES AND BUILD A BETTER FUTURE; A FUTURE THAT ONLY A UNIFIED, ALTRUISTIC COLLECTIVE HUMAN MIND CAN ACCOMPLISH.

REMOTE ACTUATION SITES
2 3 4 5
SPEED

TECHNOLOGY

INTERNET
UPLOAD

YOUTH

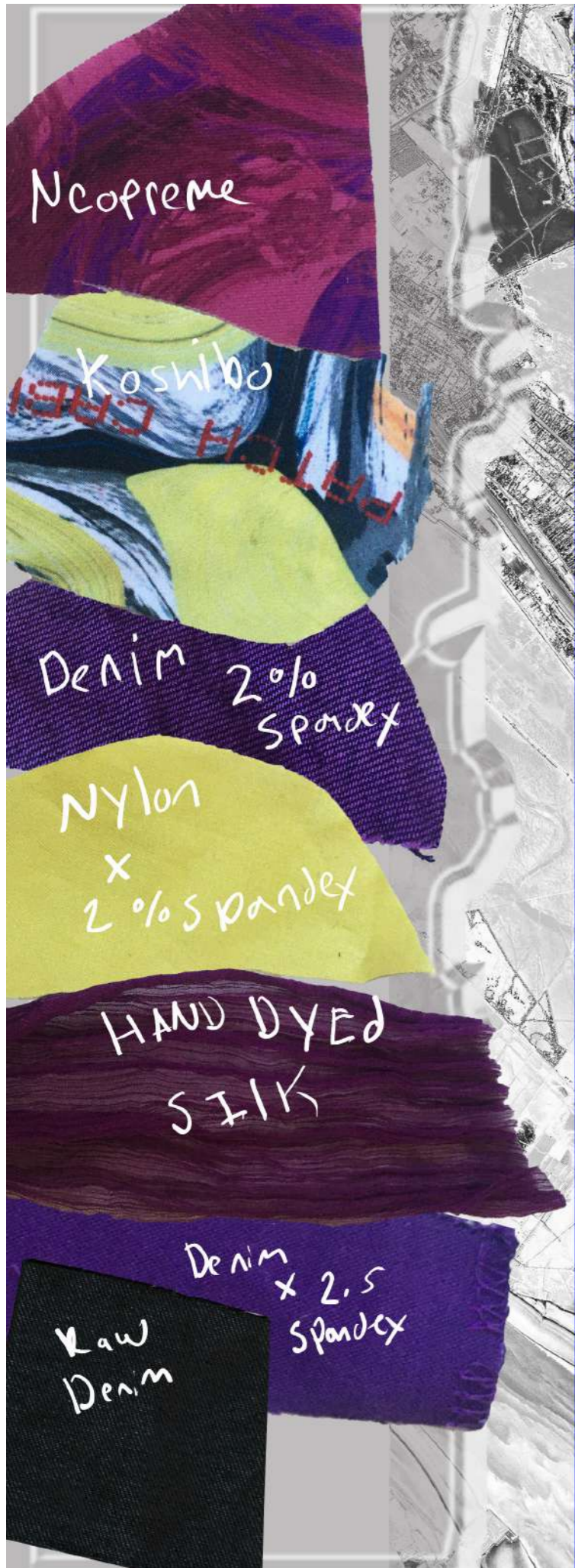


STIMULATION
VIOLENCE



DDY / THDDY / THIRD HAND





BODY
AN INTERNET ACTUATED &

PANTONE 15-0635 TCX

PANTONE 19-3731 TCX

PANTONE 18-1662 TCX

PANTONE 18-2929 TCX

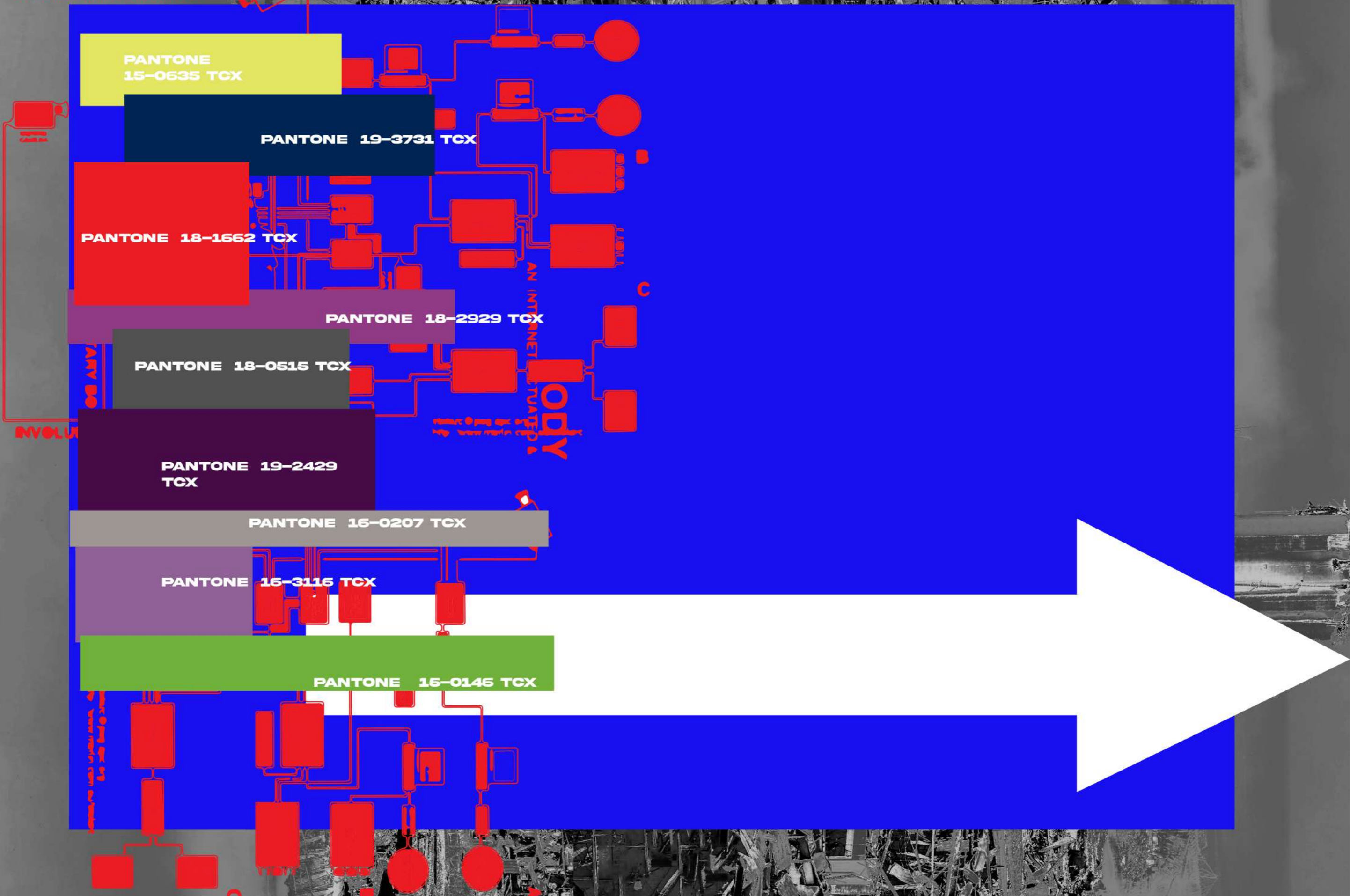
PANTONE 18-0515 TCX

PANTONE 19-2429 TCX

PANTONE 16-0207 TCX

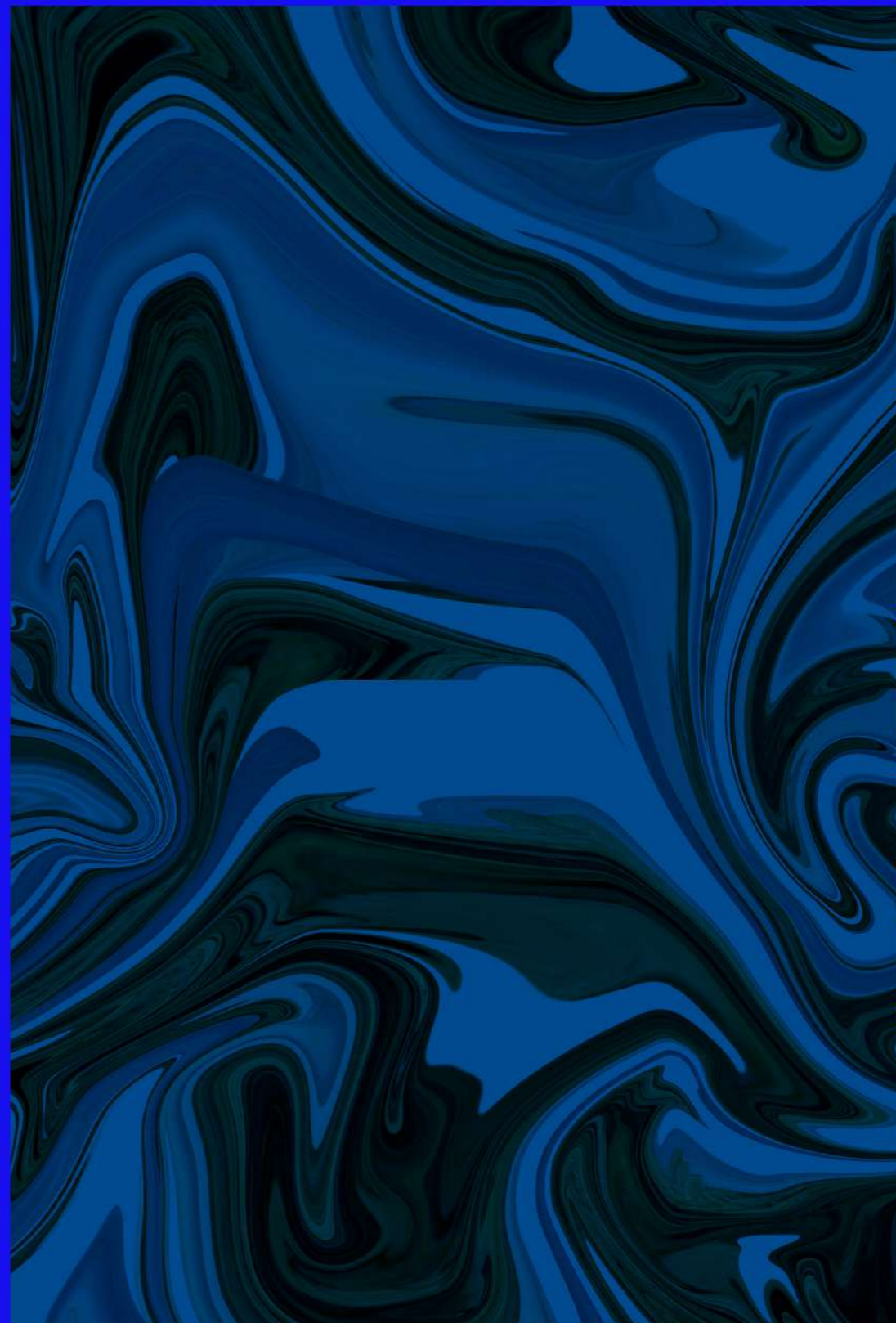
PANTONE 16-3116 TCX

PANTONE 15-0146 TCX

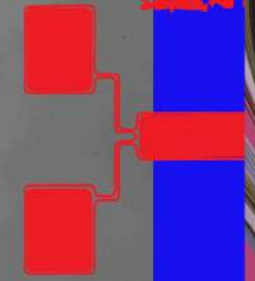


BODY

AN INTERNET ACTUATED

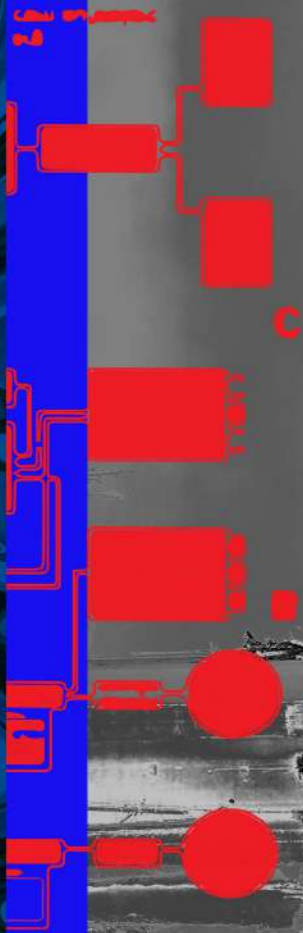
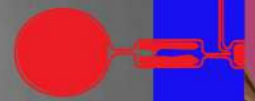


INVOLUNTARY

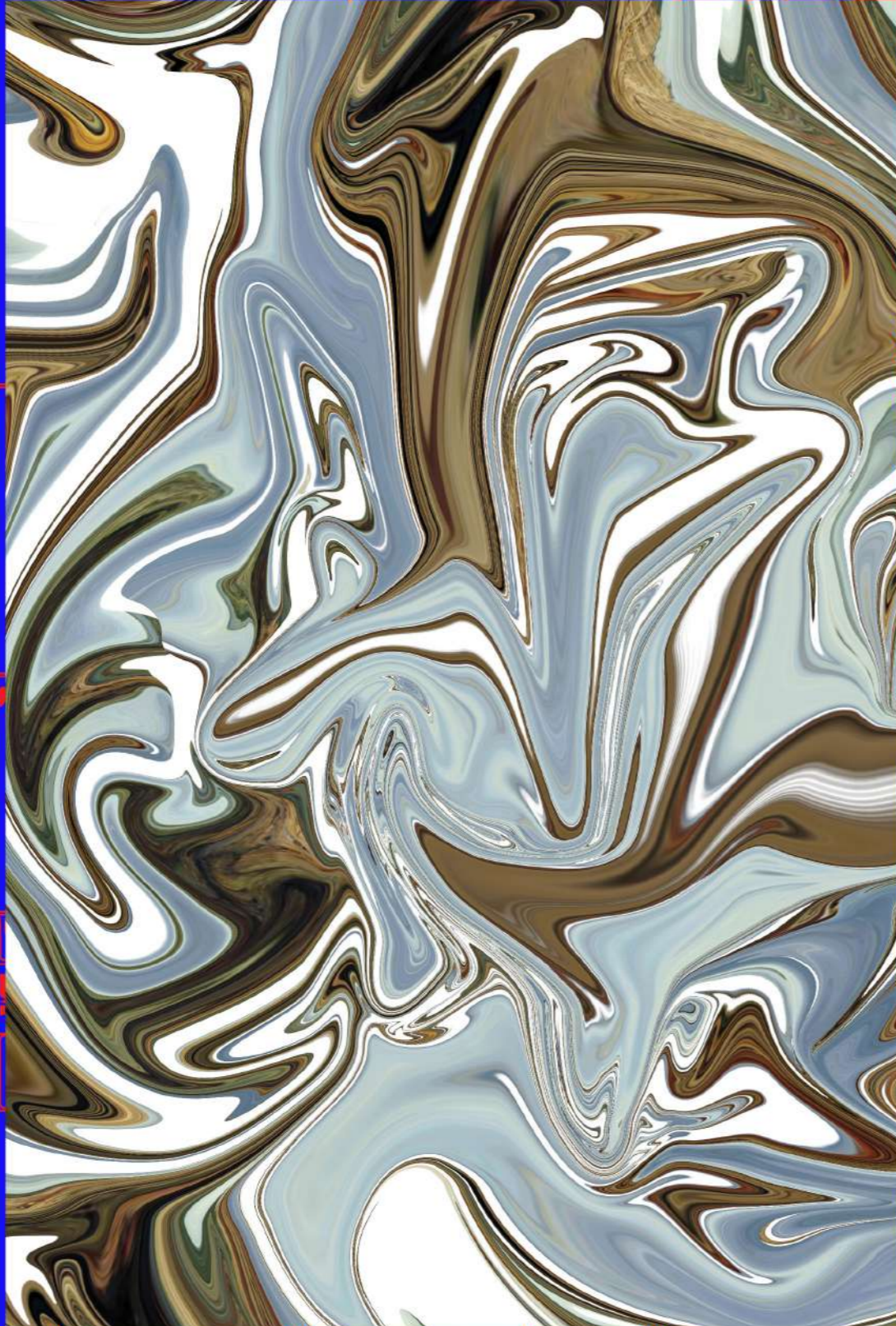


LIBERTY

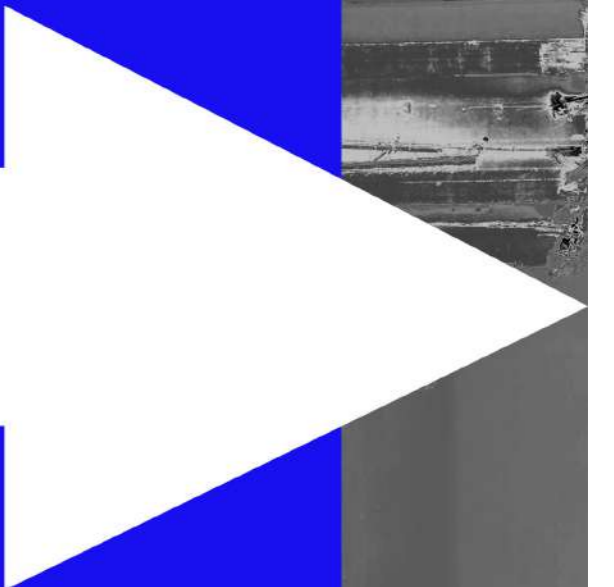
SECURITY



BODY
AN INTERNET ACTUATED &



PRO CESS



INVOLUNTARY BODY
THIRD HAND



INVOLUNTARY BODY
THIRD HAND



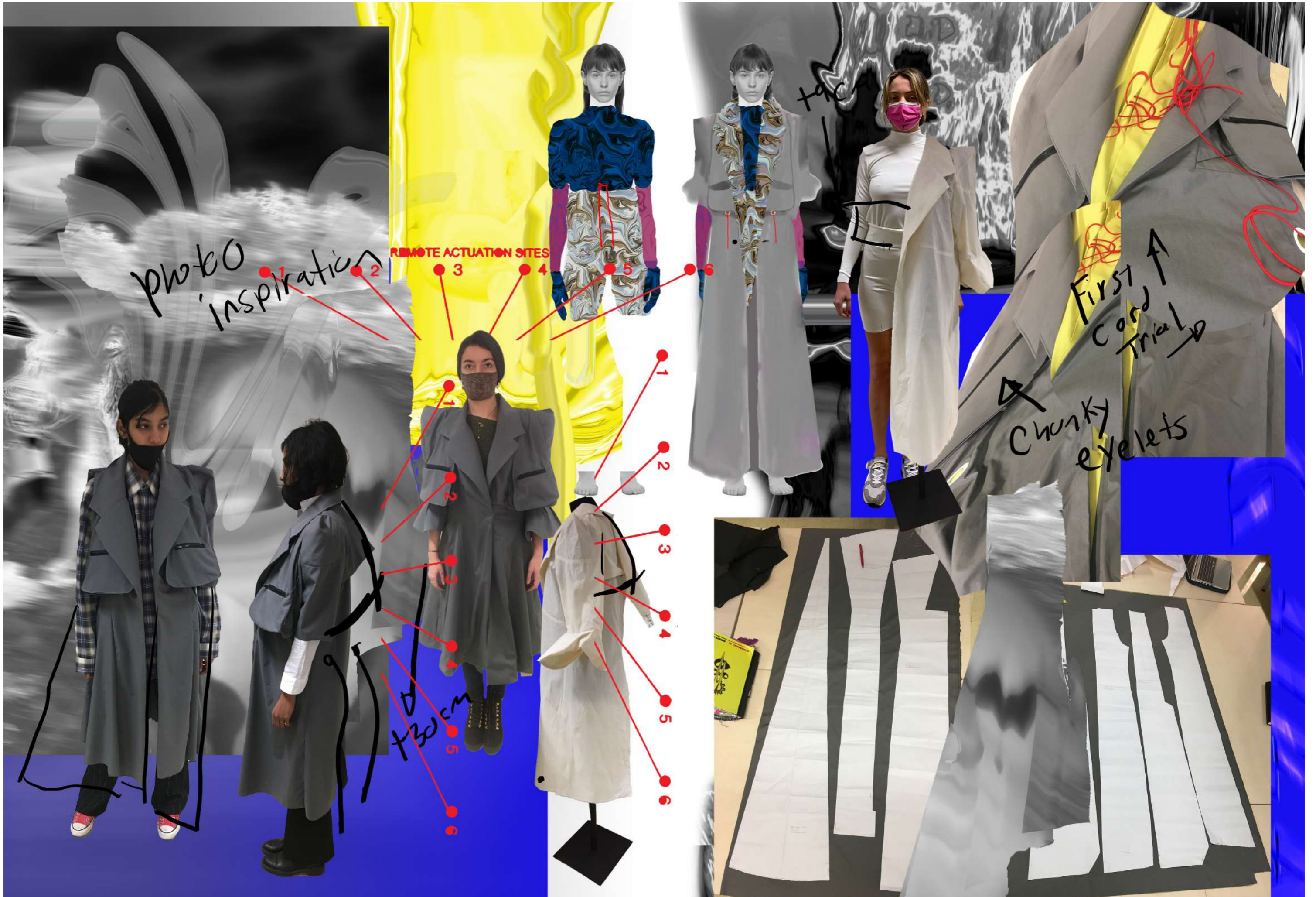


photo inspiration

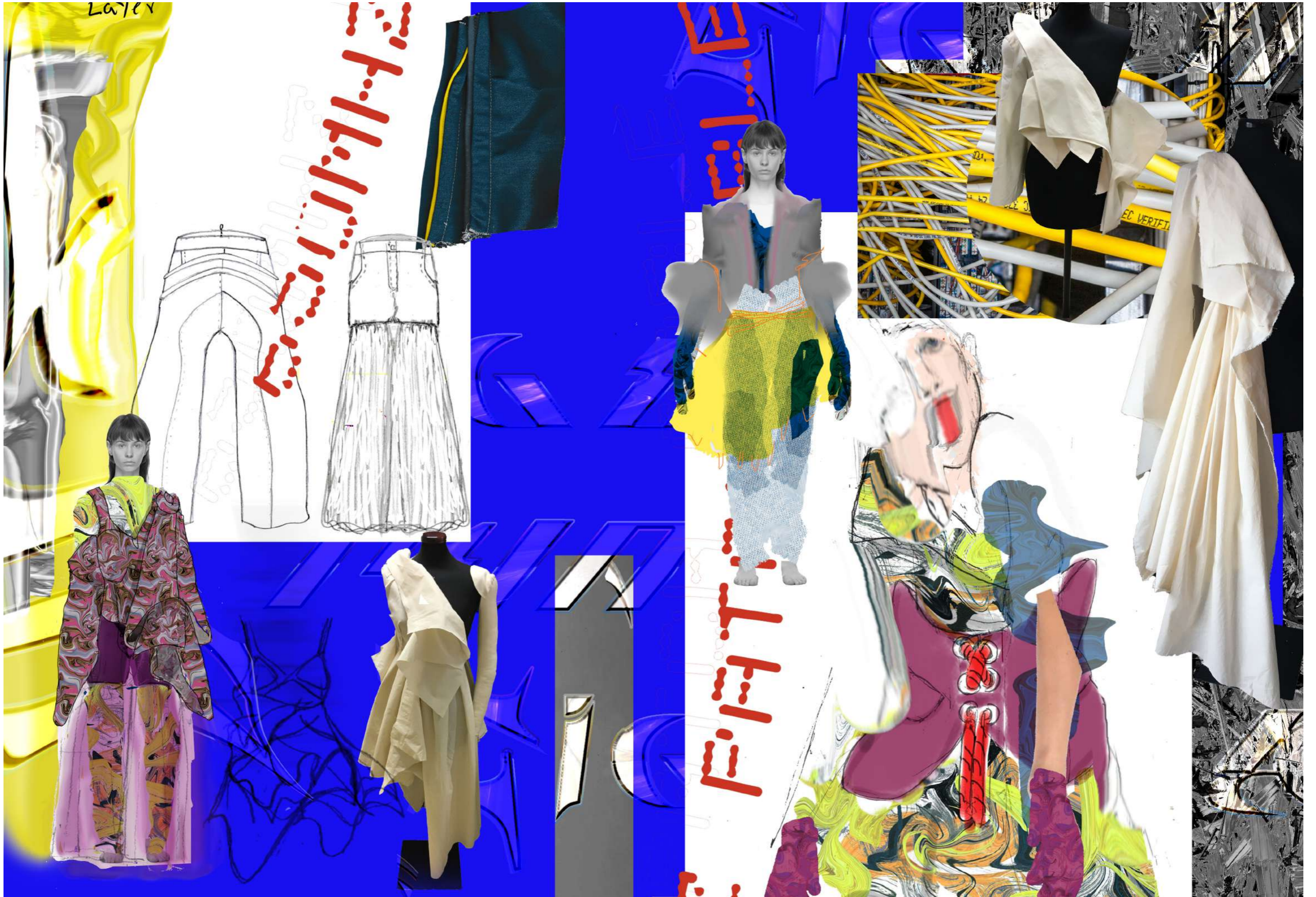
REMOTE ACTUATION SITES

First Card Trial

Chunky eyelets

130cm

tarc



Use elastic
chord



THICKER
CHORD

Lessen volume

FIRST
FITTINGS

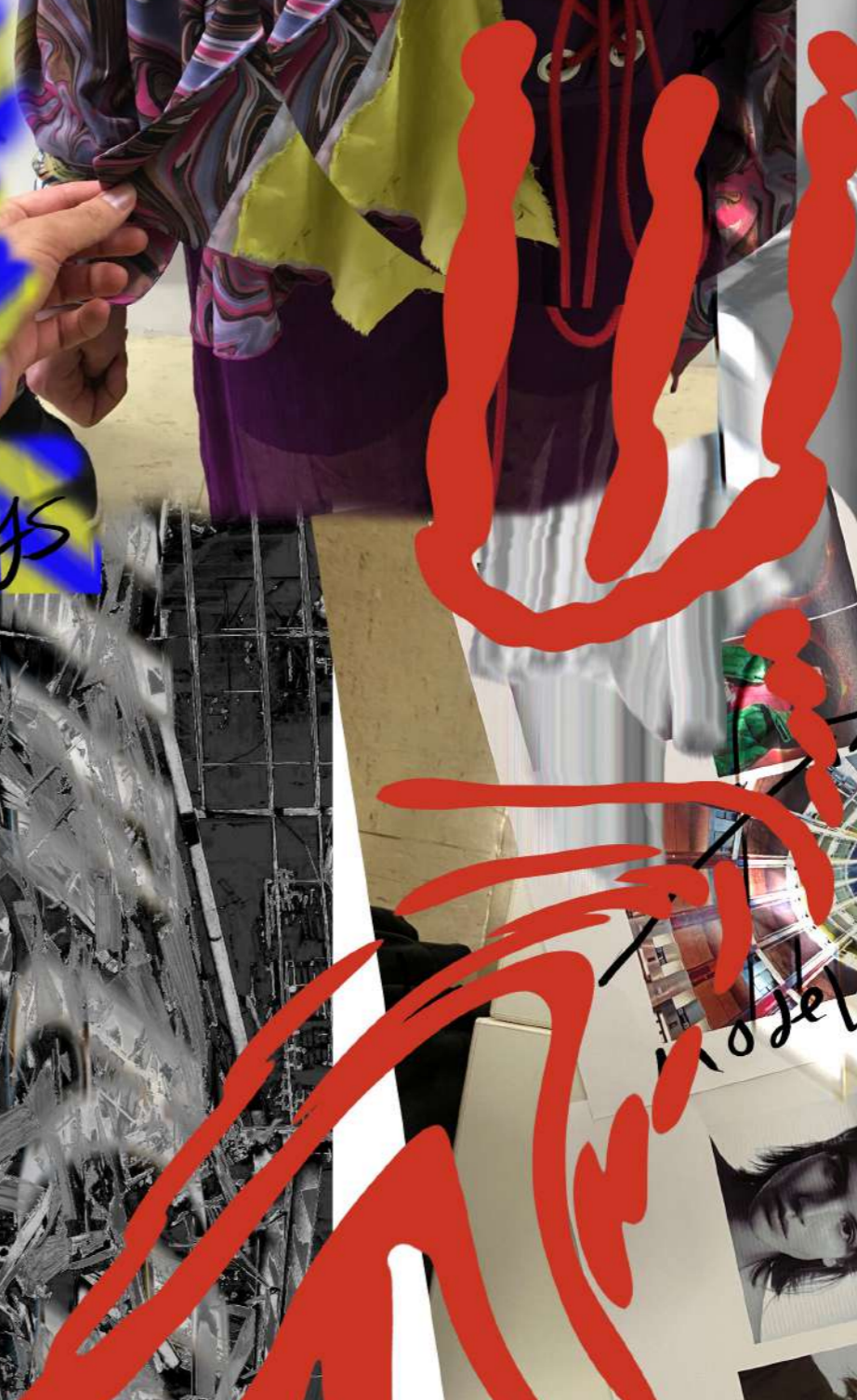
I DEAS

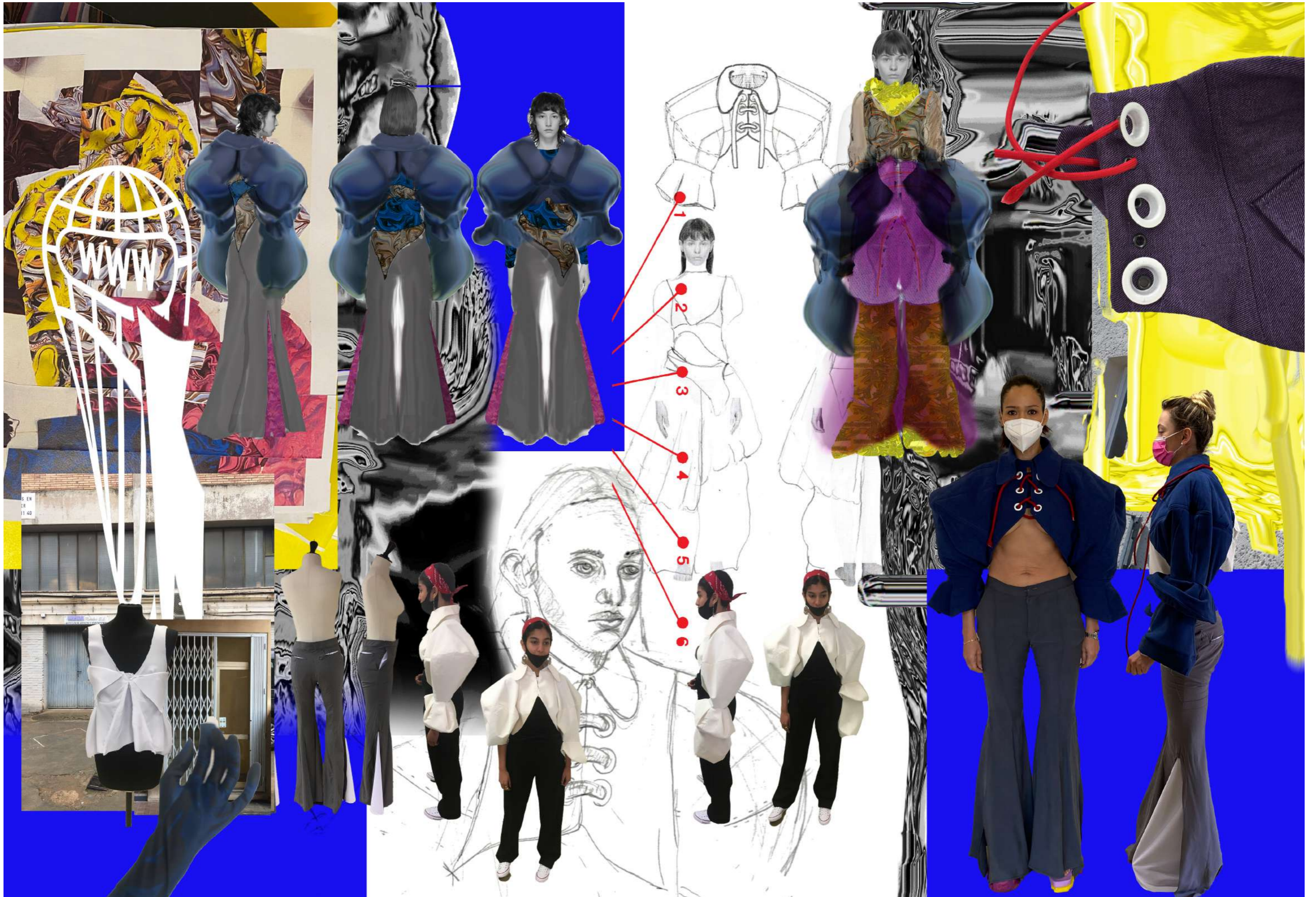


Drop crotch
1cm



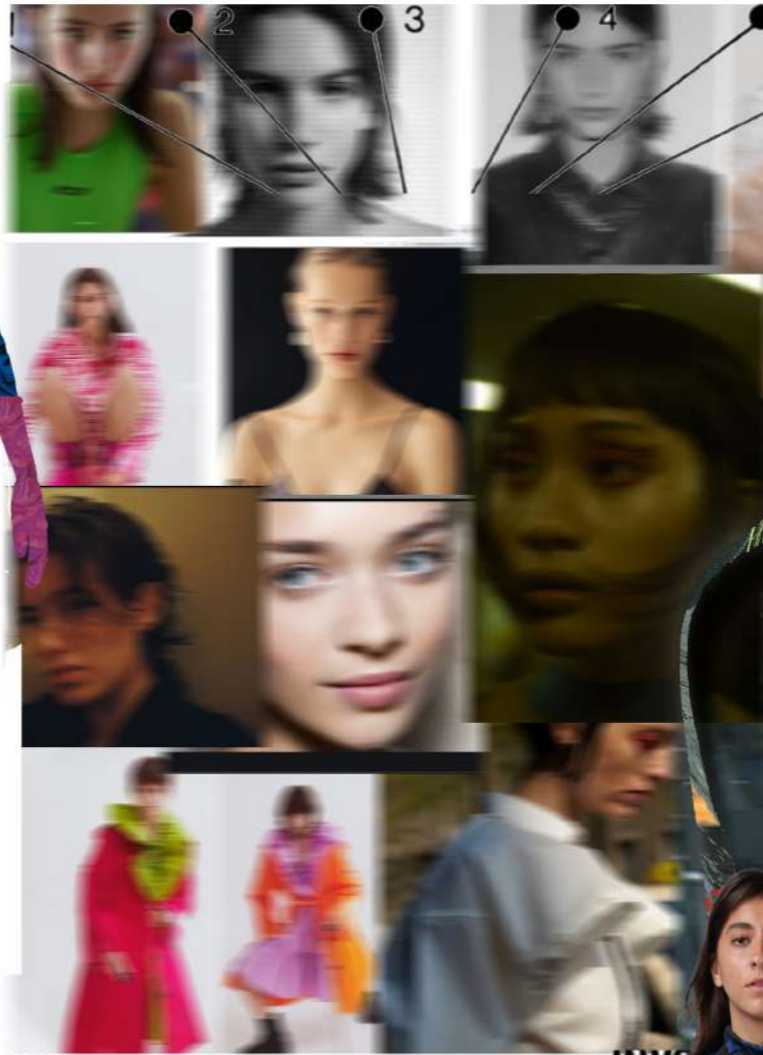
Model / Location







REMOTE ACTUATION SITES



T SCREEN INTERFACE & MUSCLE-STIMULATION CIRCUITRY

INVO

THIRD HAND



Upper Arm Length
20cm

with an overlay



Inspiration

GRAPHIC TRIALS

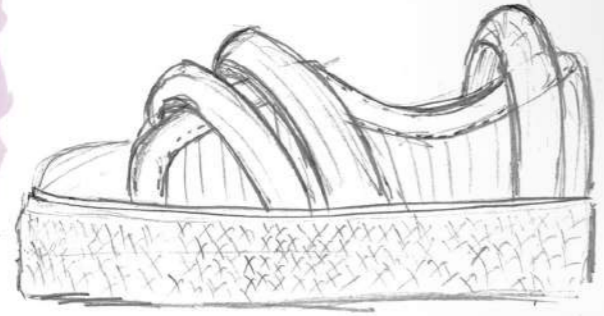
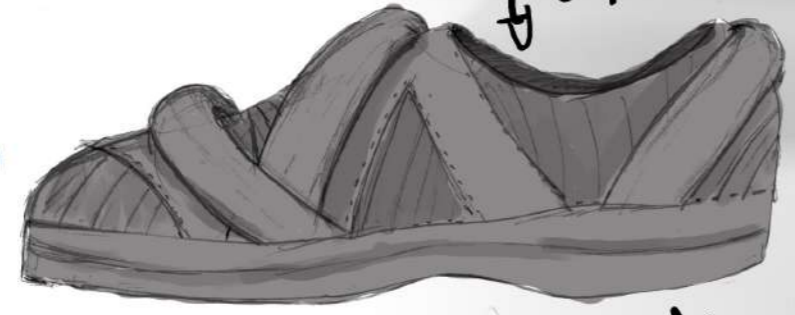
Late closure



quilted

sneaker
w/ sock

Platform
sneaker









1

2

3

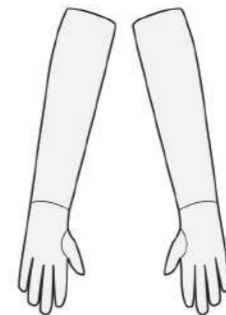
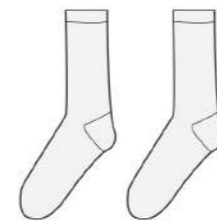
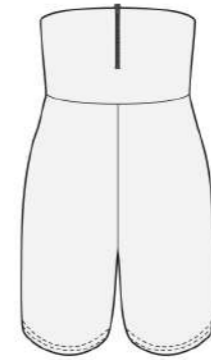
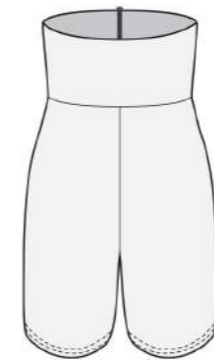
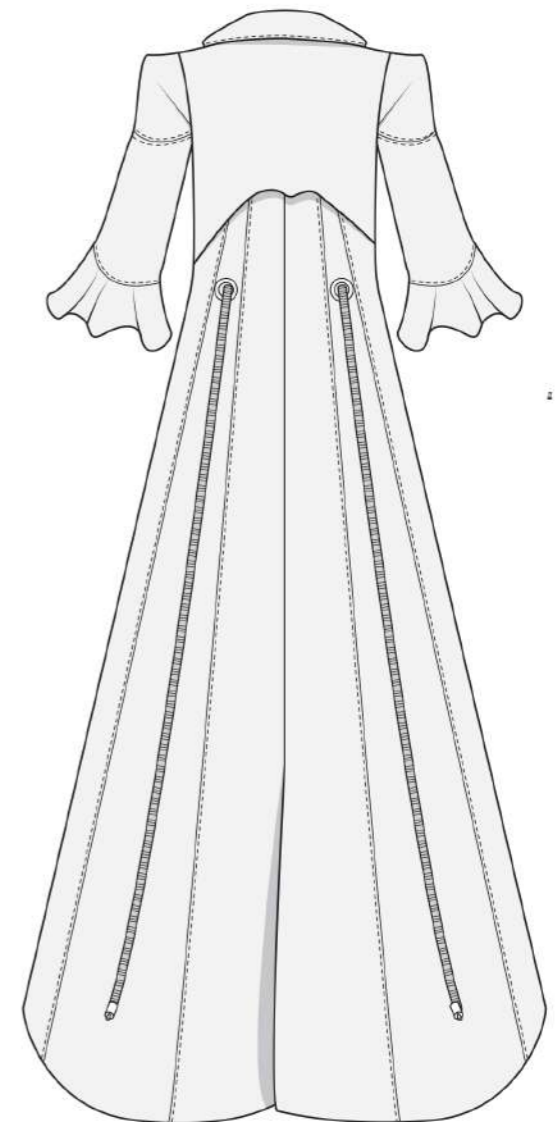
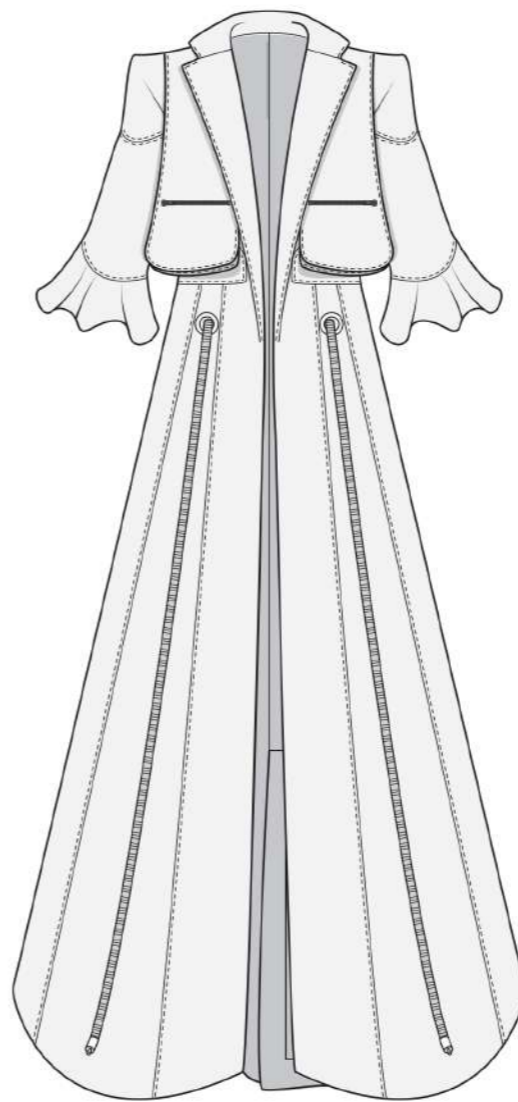
4

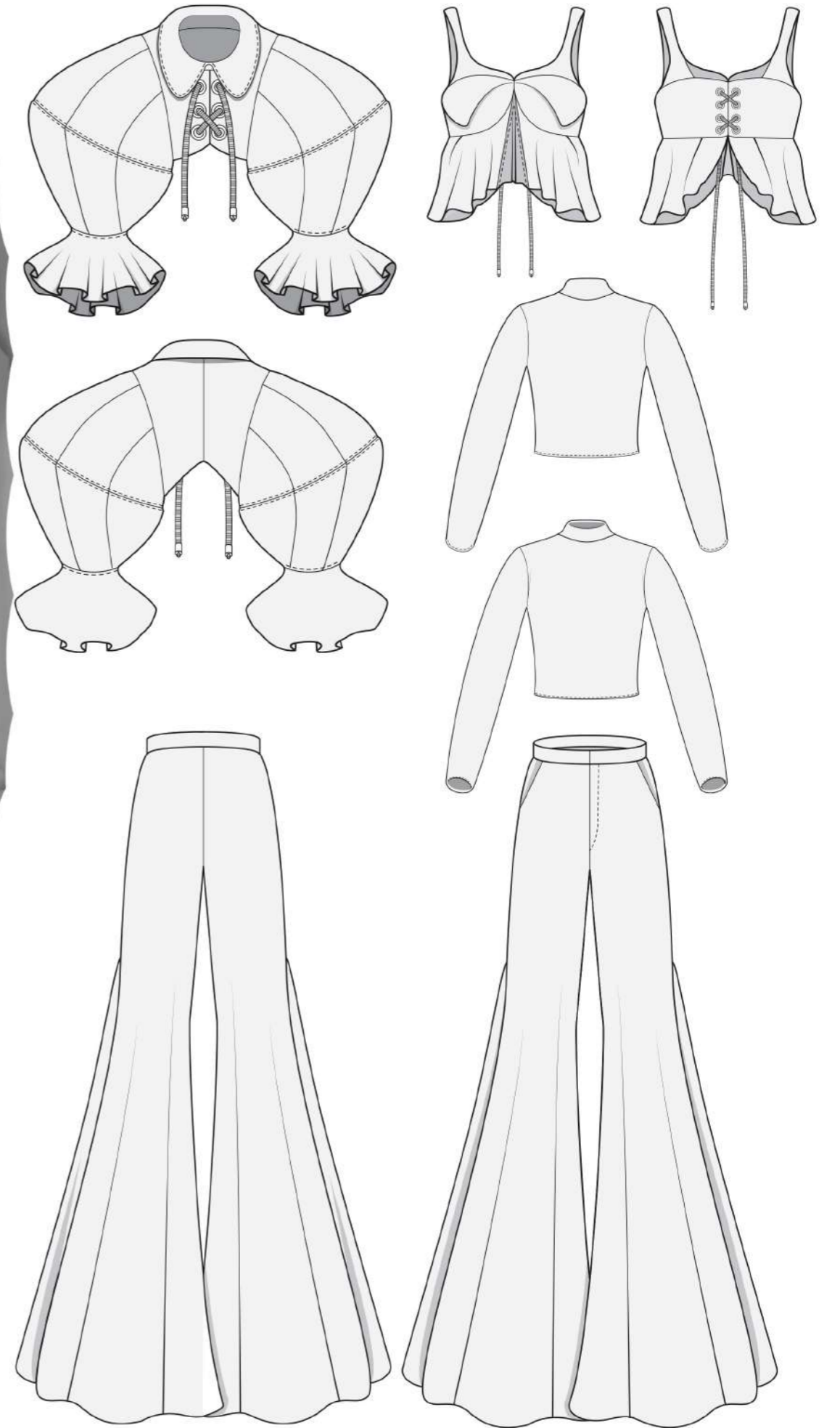
5

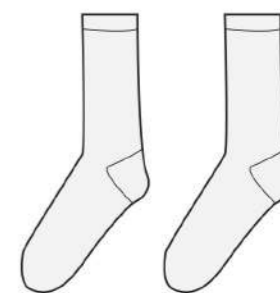
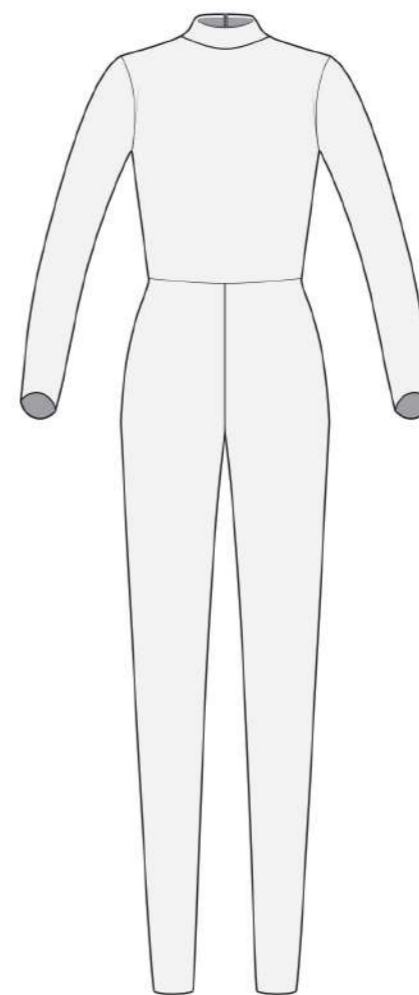
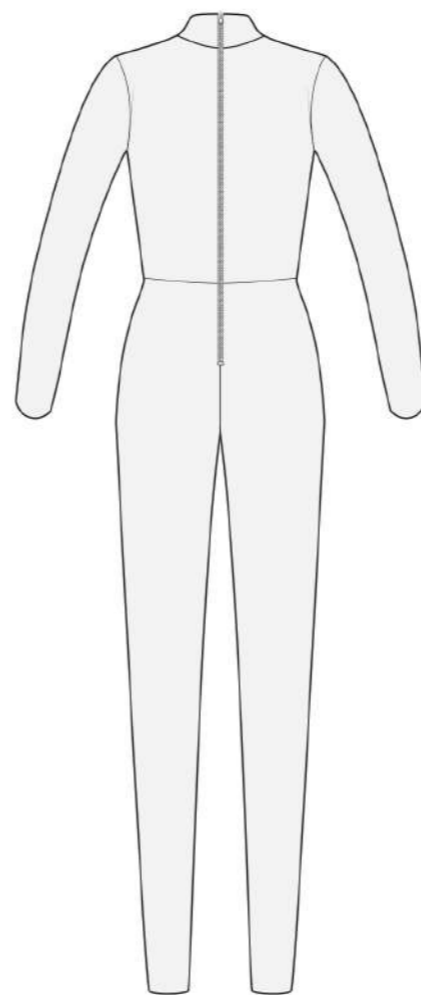
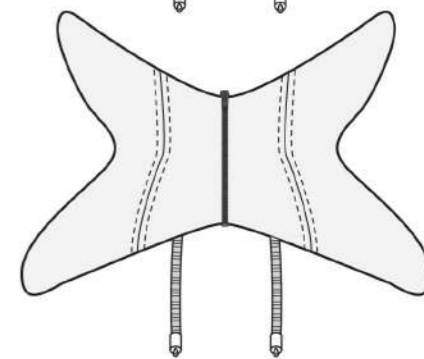
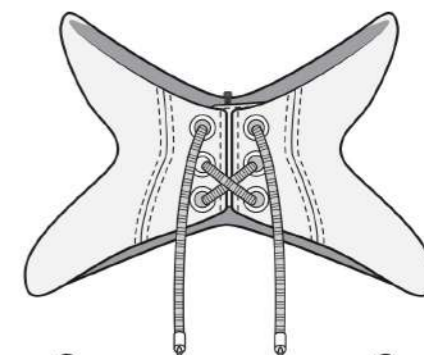
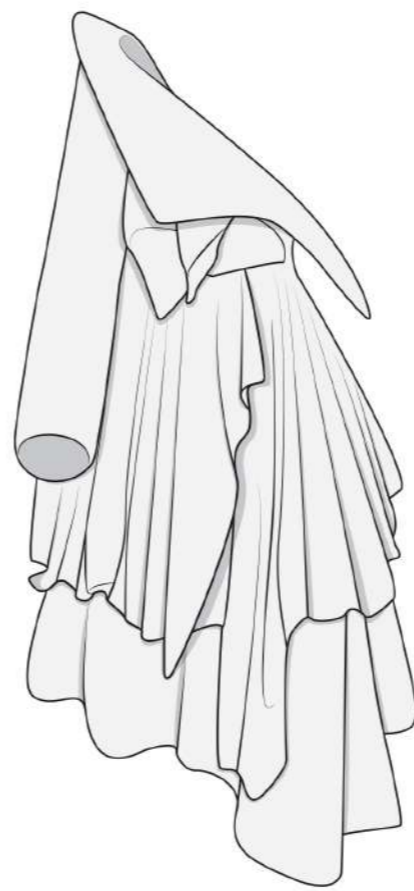
6

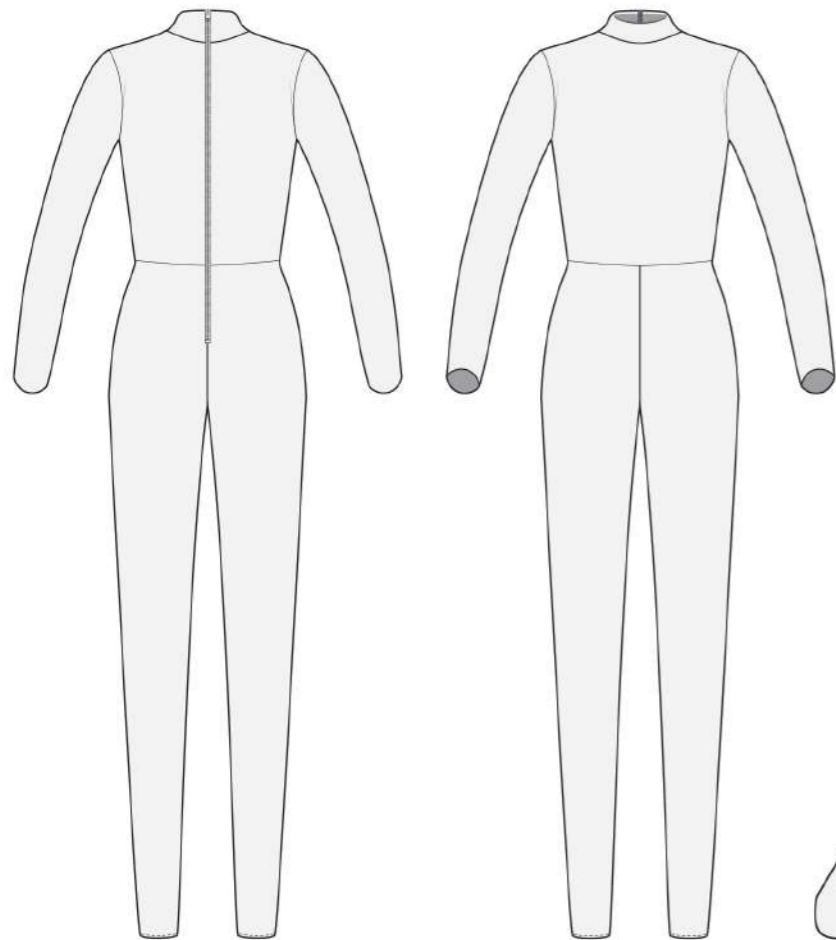
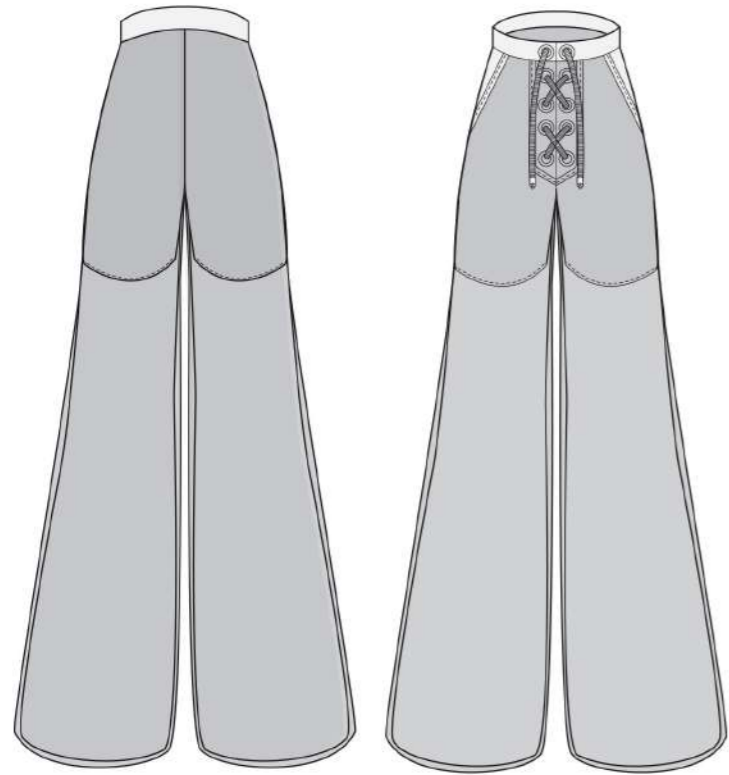
7

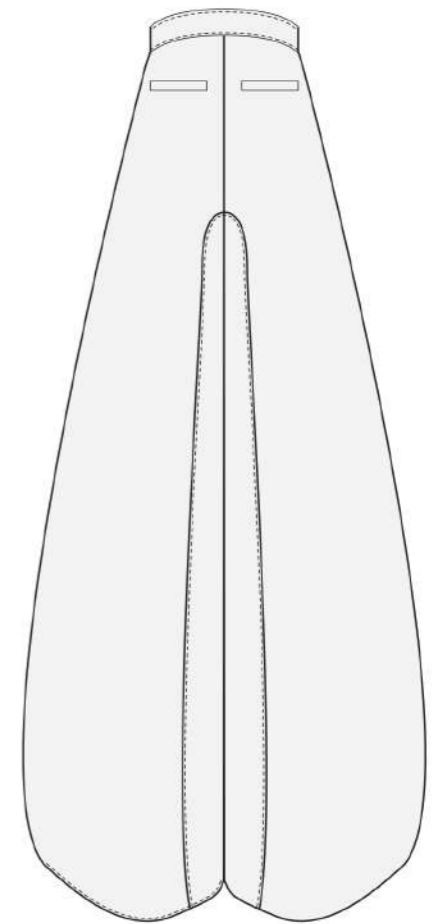
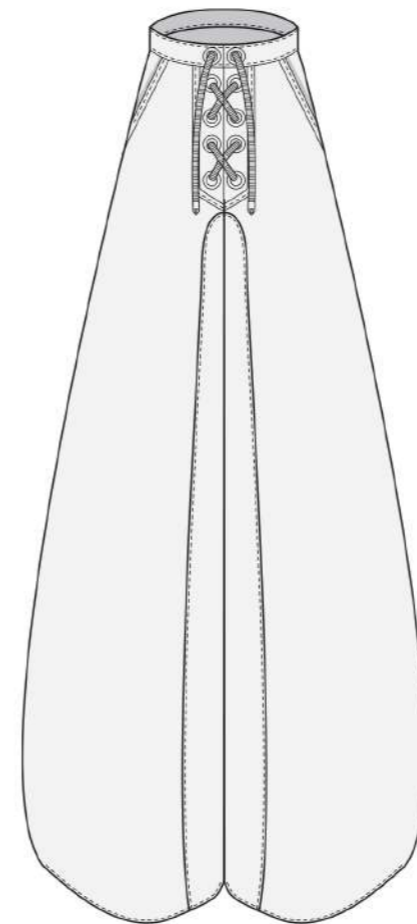
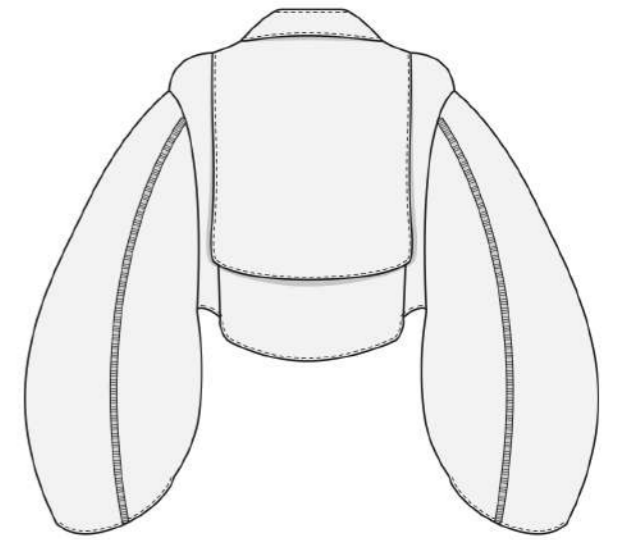
8

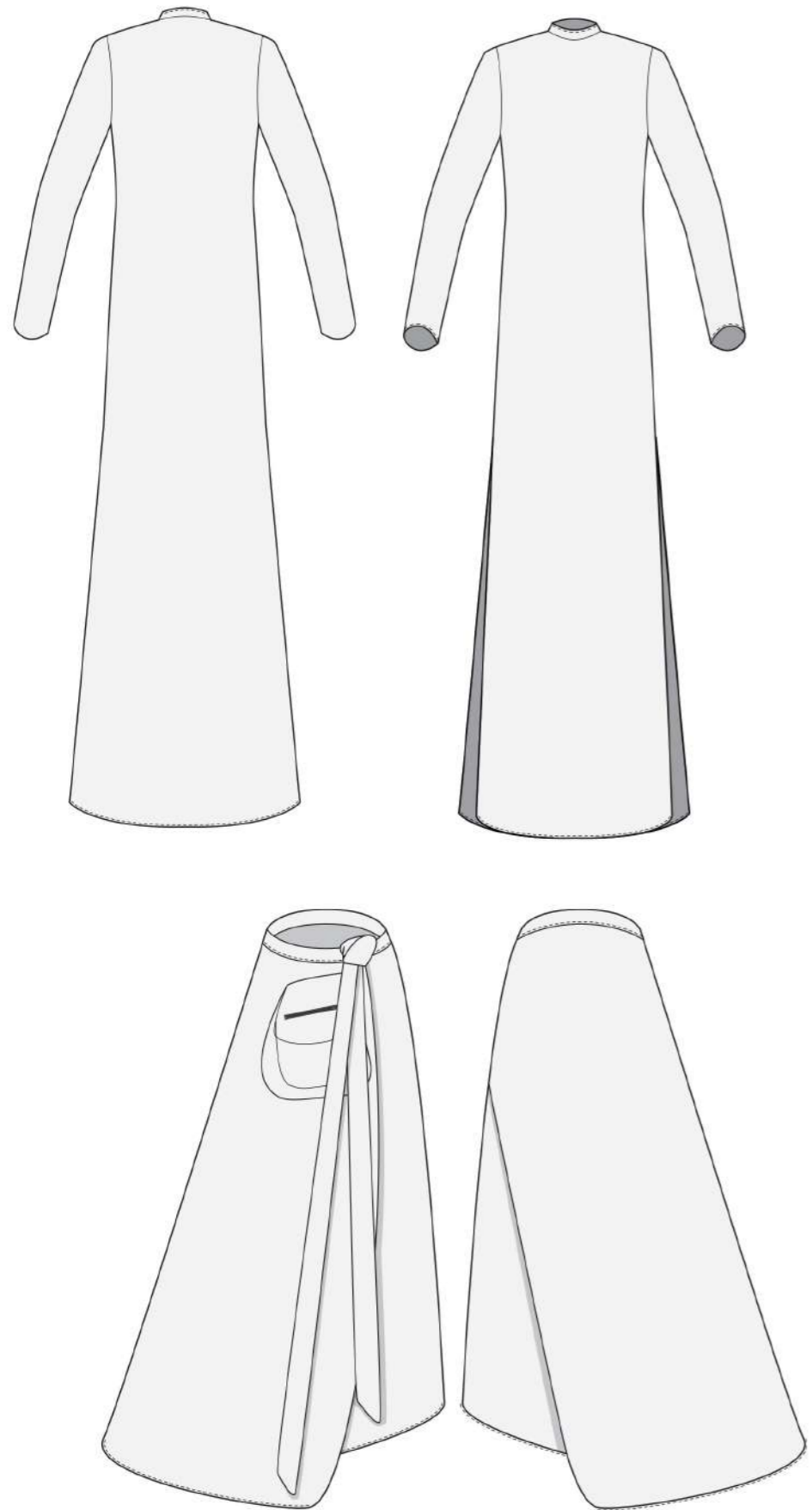


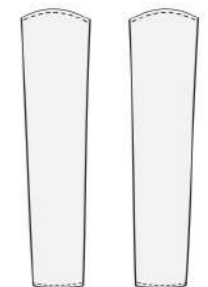
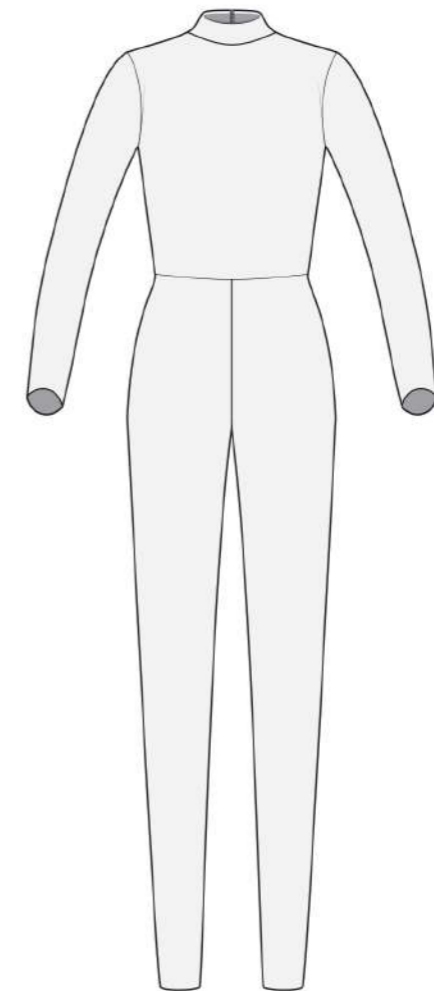
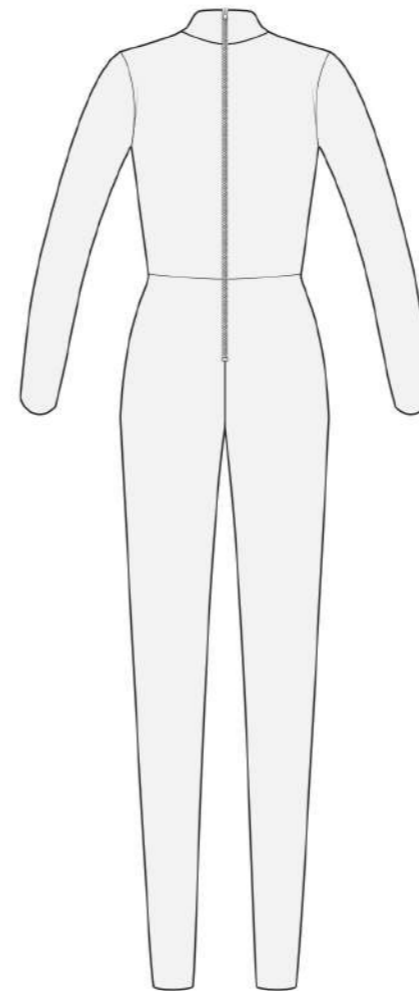
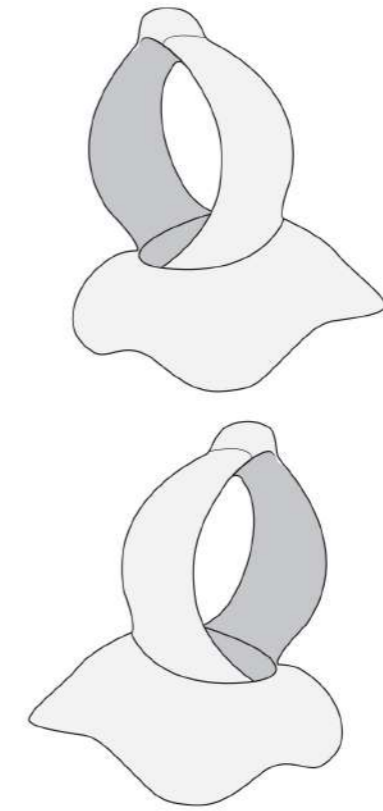
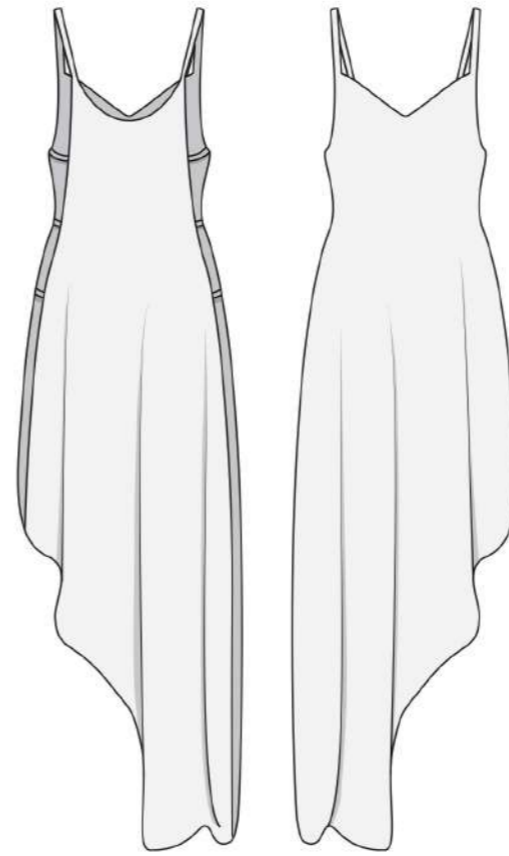
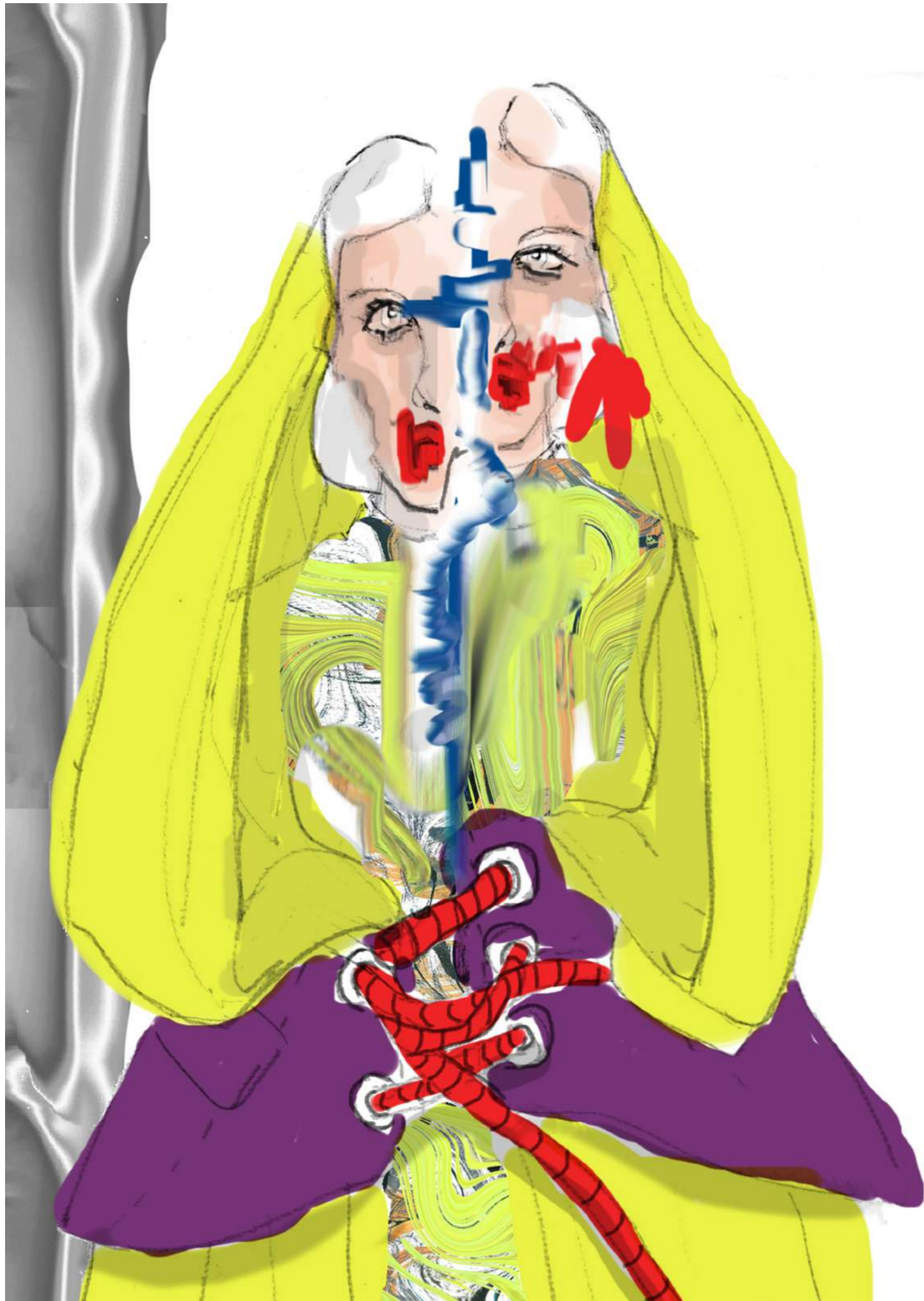


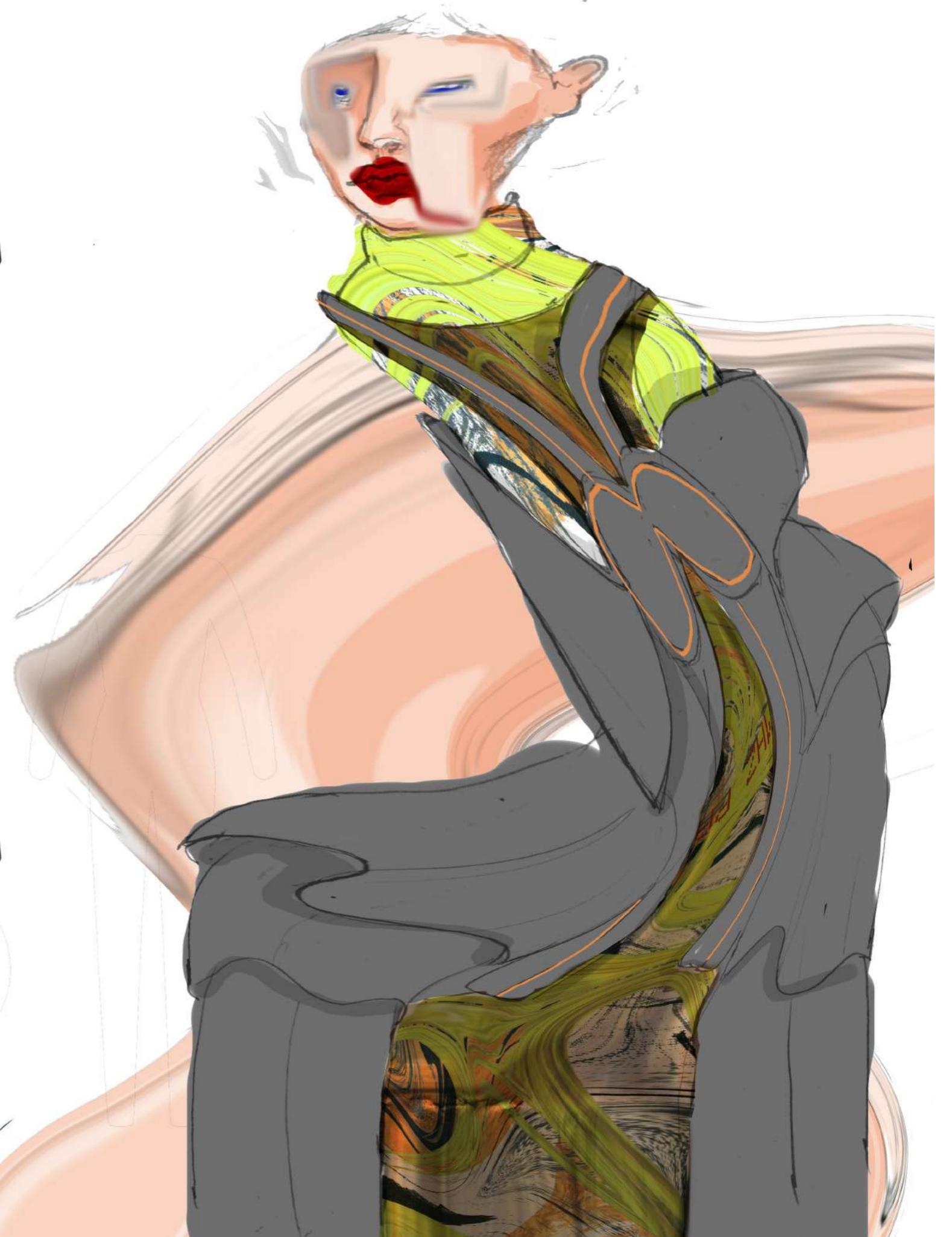
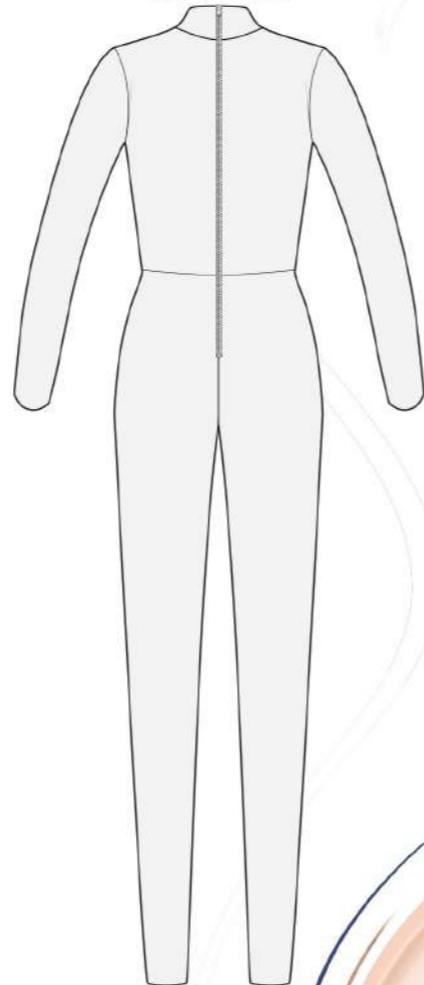
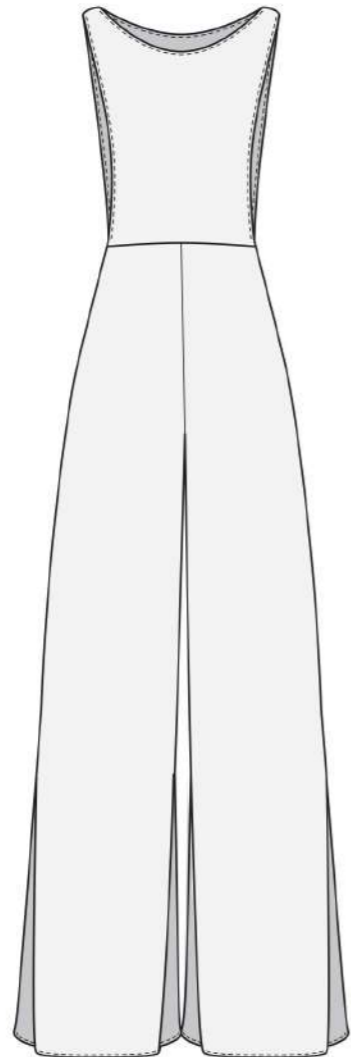
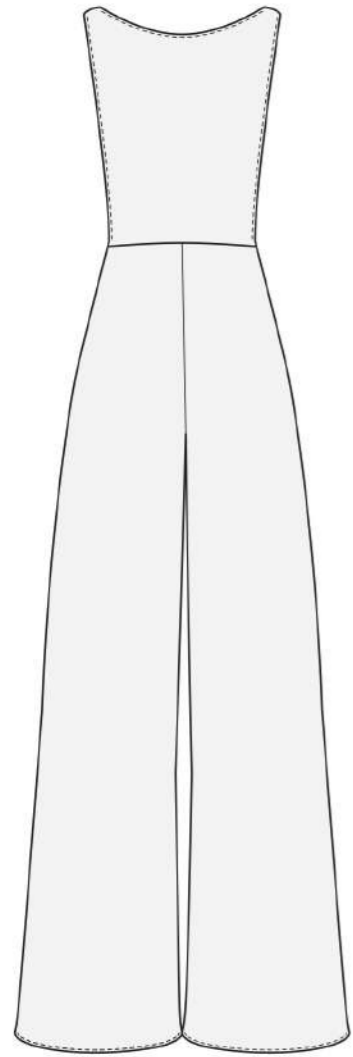
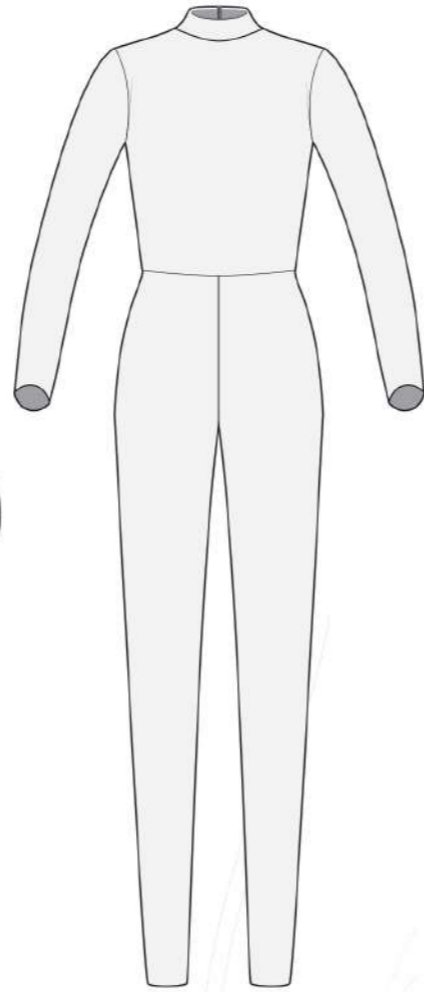
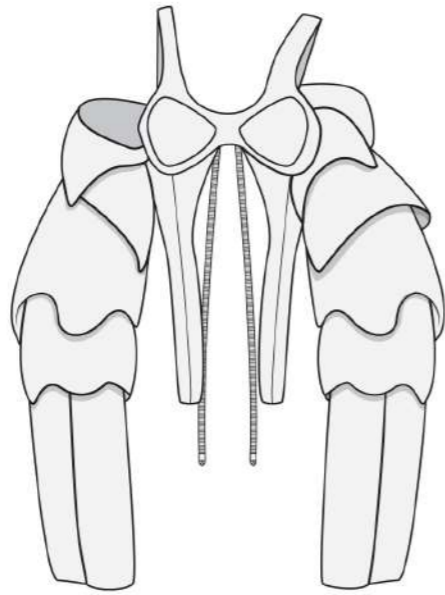
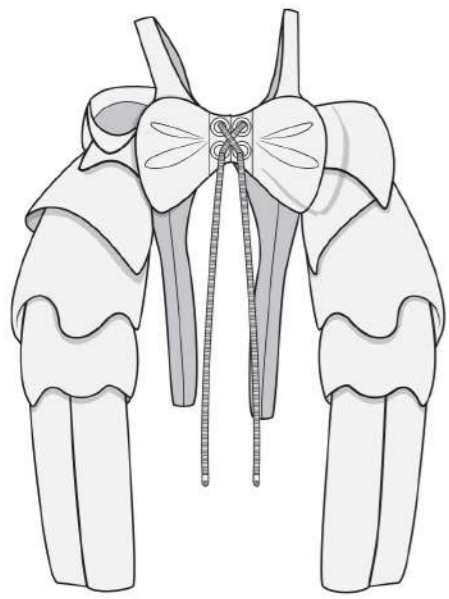






















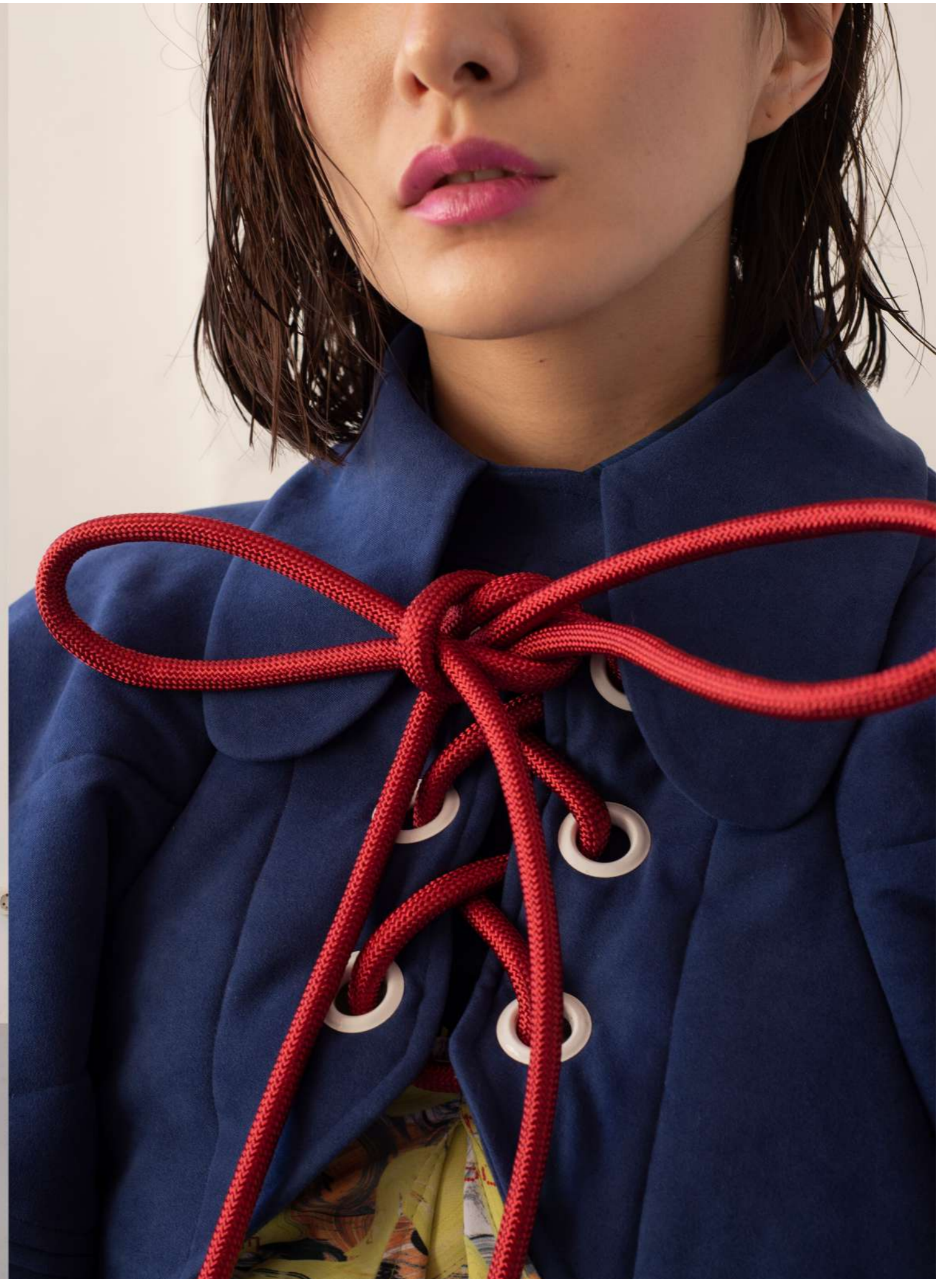














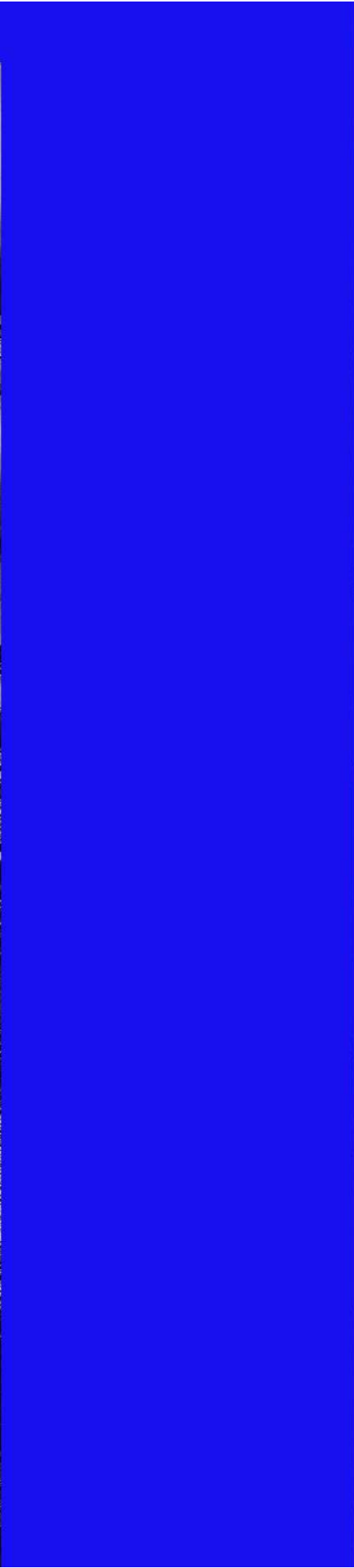
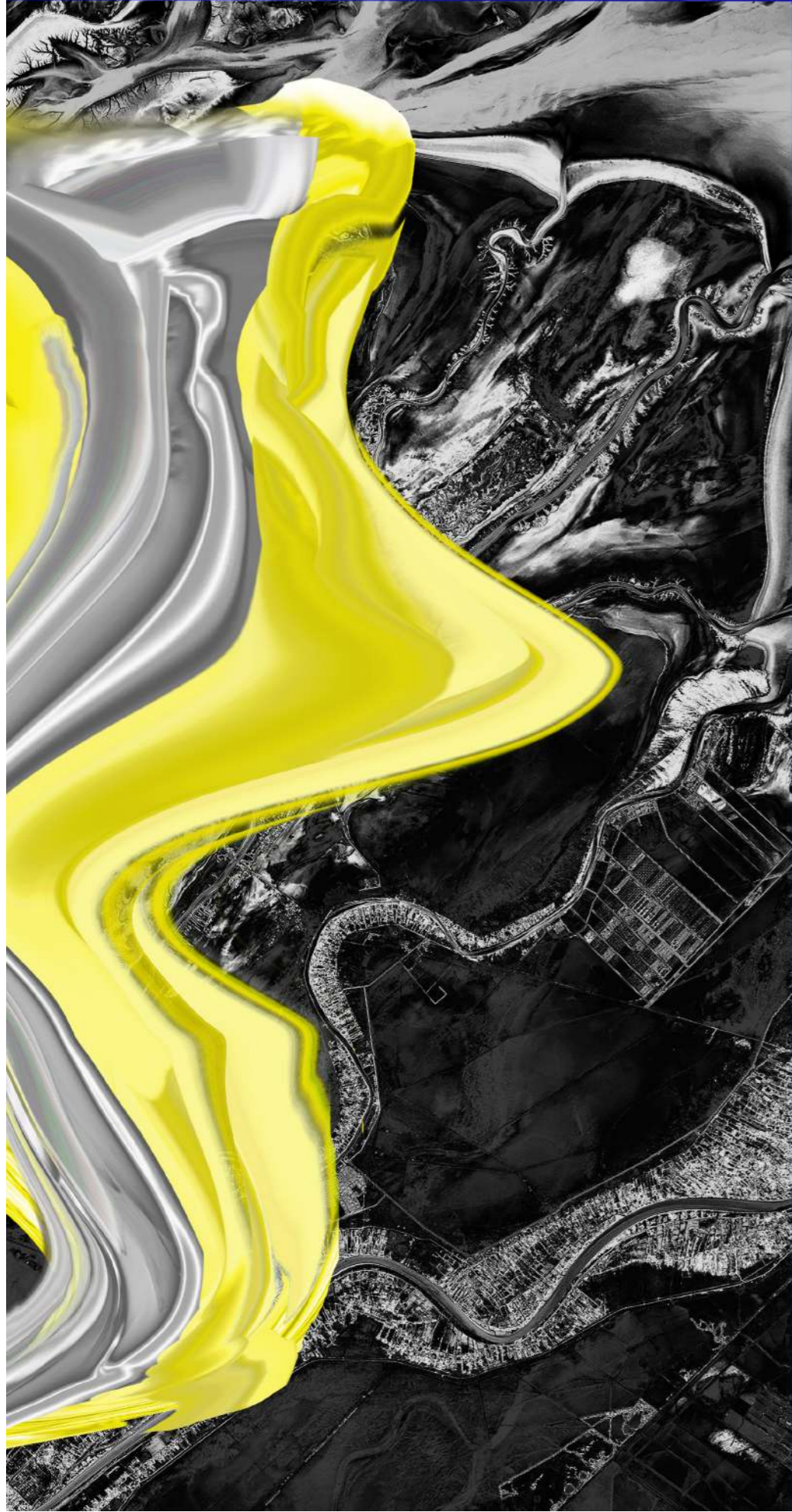












W I G G H A

P I M E

G H F A C

M N E H

G G H F

P I M E