



WHY *i* SPEAK English

AMANDA NAZARETH

"In the beginning, there were two nations.

One was a vast, mighty and magnificent empire, brilliantly organized and culturally unified, which dominated a massive swath of the earth. The other was an undeveloped, semi feudal realm, riven by religious factionalism and barely able to feed its illiterate, diseased and stinking masses.

The first nation was India. The second was England."

Alex von Tunzelmann

My daily interactions are cast with the post-colonial veil that everybody sees India through. I was surprised and quite frankly disappointed with the way my country is viewed and the almost ridiculous questions I get asked about being Indian. One of the most majestic countries in the world that is known to be inhabited around 250,000 years ago is just reduced to the aftermath of our colonial rule.

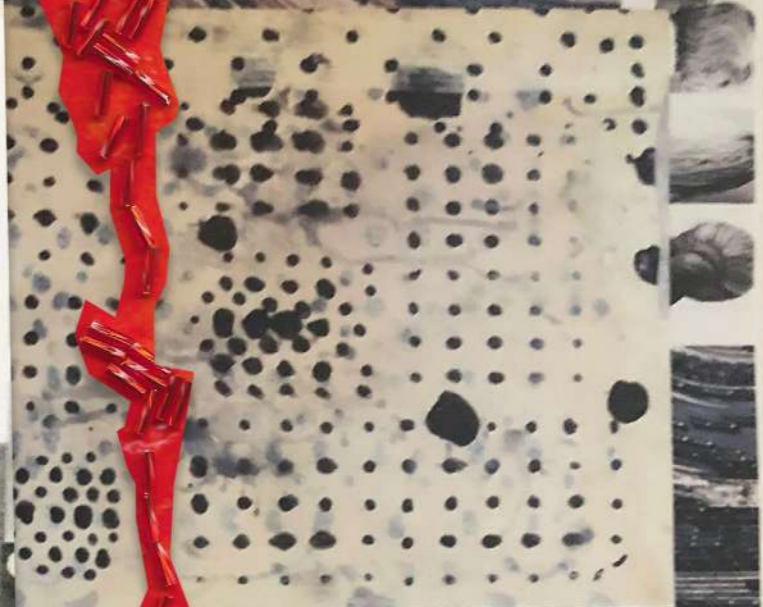
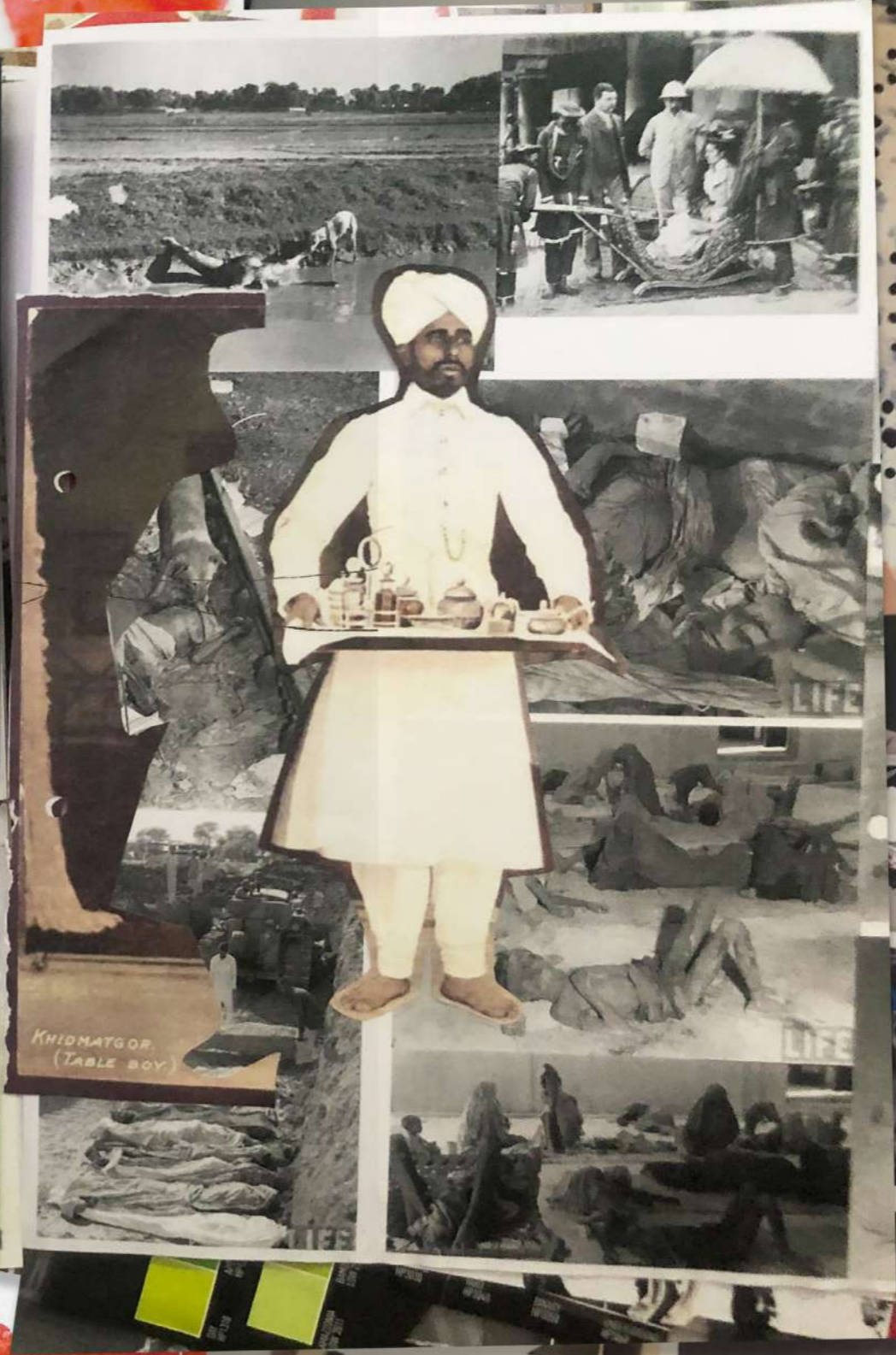
I wanted to create a collection that showed what we once were, what we went through and how we live today. The colours I've chosen are particularly bright; sometimes almost too loud which I have taken directly from the vibrance and diversity my country offers. I wanted to showcase the colours at its best; which is why I decided to use them at full saturation; this shows richness and depth but also leaves you with a sensation of heaviness.

A mix of fabrics are in play with each look; keeping the same monotone but with different textures and weights. There are some that are pleated, some that are embroidered, the canvas and denims juxtapose the lightest linens and hems while cotton plays a significant role in the collection. This is an ode to our textile prowess and also shows the waste that India bears as the post-colonial garment manufacturer for the world.

The silhouettes are dynamic with a pattern making emphasis on creating 3D wearable volumes. Layering is another aspect of the collection that adds to the weight that the concept has on me. The characteristic British trench and the traditional Indian sari were inspirations for silhouette and draping references while the more geometric shapes were taken straight out of the Indian architectural landscape or what remains of it.

"India shaped my mind, anchored my identity, influenced my beliefs, and made me who I am. ... India matters to me.





SPIT HERE



PANTONE® 11-0105 TCX Antique White	PANTONE® 13-0443 TCX Love Bird	PANTONE® 13-0858 TCX Vibrant Yellow	PANTONE® 15-1102 TCX Gold Fusion	PANTONE® 17-1563 TCX Cherry Tomato	PANTONE® 18-1053 TCX Toreador	PANTONE® 18-1783 TCX High Risk Red	PANTONE® 19-0208 TCX Jet Black
PANTONE® 11-0602 TCX Biscuit	PANTONE® 13-0550 TCX Lime Punch	PANTONE® 13-0659 TCX Lemon Chrome	PANTONE® 19-3807 TCX Ocean Cavern	PANTONE® 19-3911 TCX Black Beauty	PANTONE® 19-3807 TCX Ocean Cavern	PANTONE® 19-3911 TCX Black Beauty	PANTONE® 19-3911 TCX Black Beauty
PANTONE® 13-0650 TCX Sulphur Spring							



सत्यमेव जयते





Hemp

Raid

Waxed Paper

Waterproof Denim

Linen

Raw Silk

Plaid Silk

Digital Printed Hemp

Denim

Cotton Twill

Leather

Boudoir Anglaise

Machine Embroidered Vantle

Raw Silk

Kutchi Dalk

Carduway

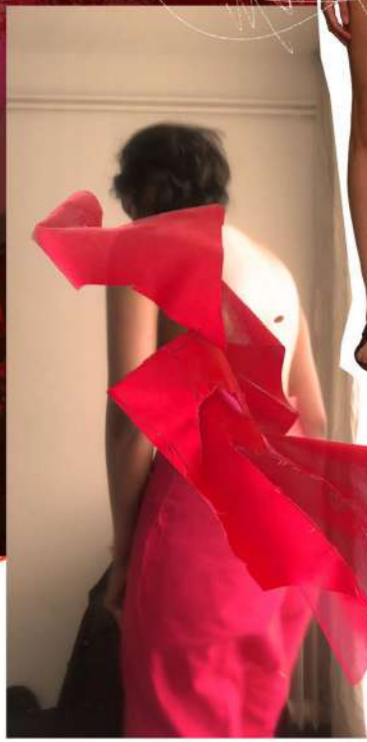
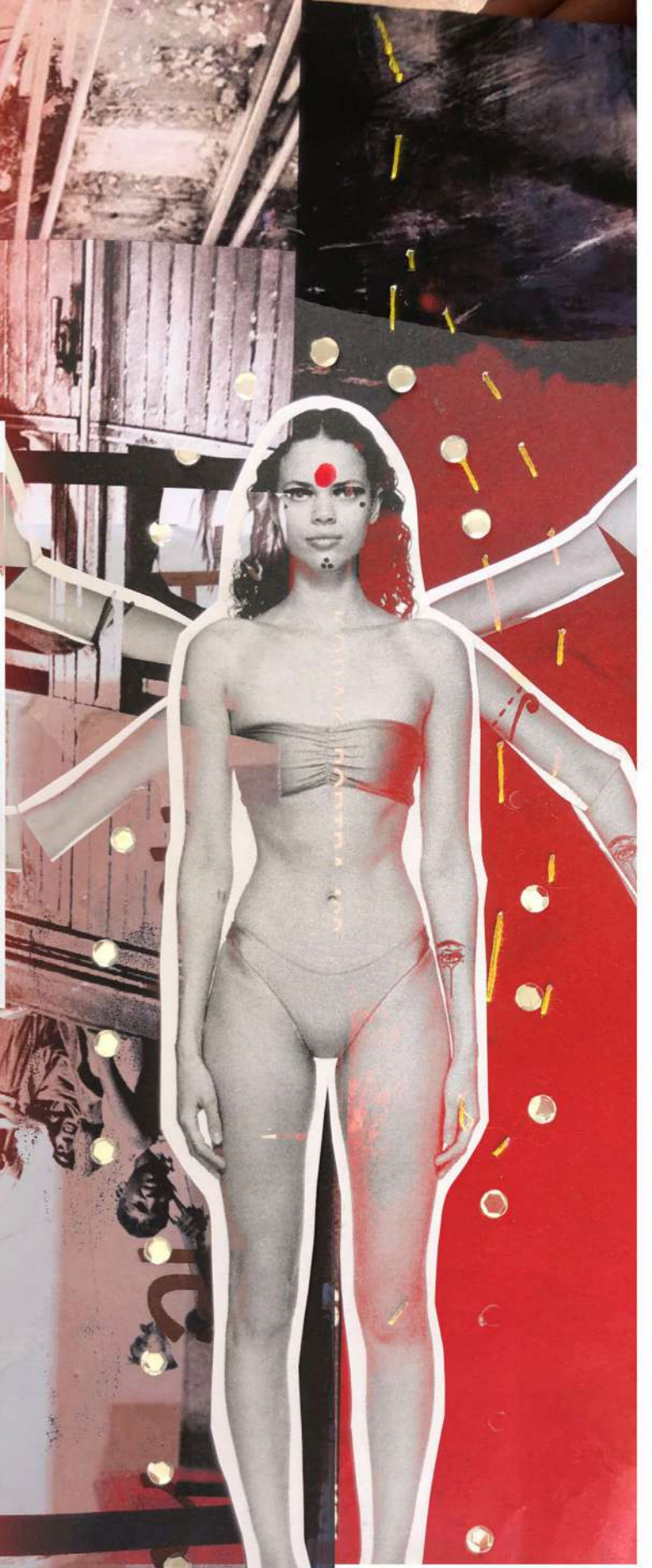
Nylon

Viscose

# LET MY COUNTRY AWAKE









US  
PROJECT

HUMAN

FOR



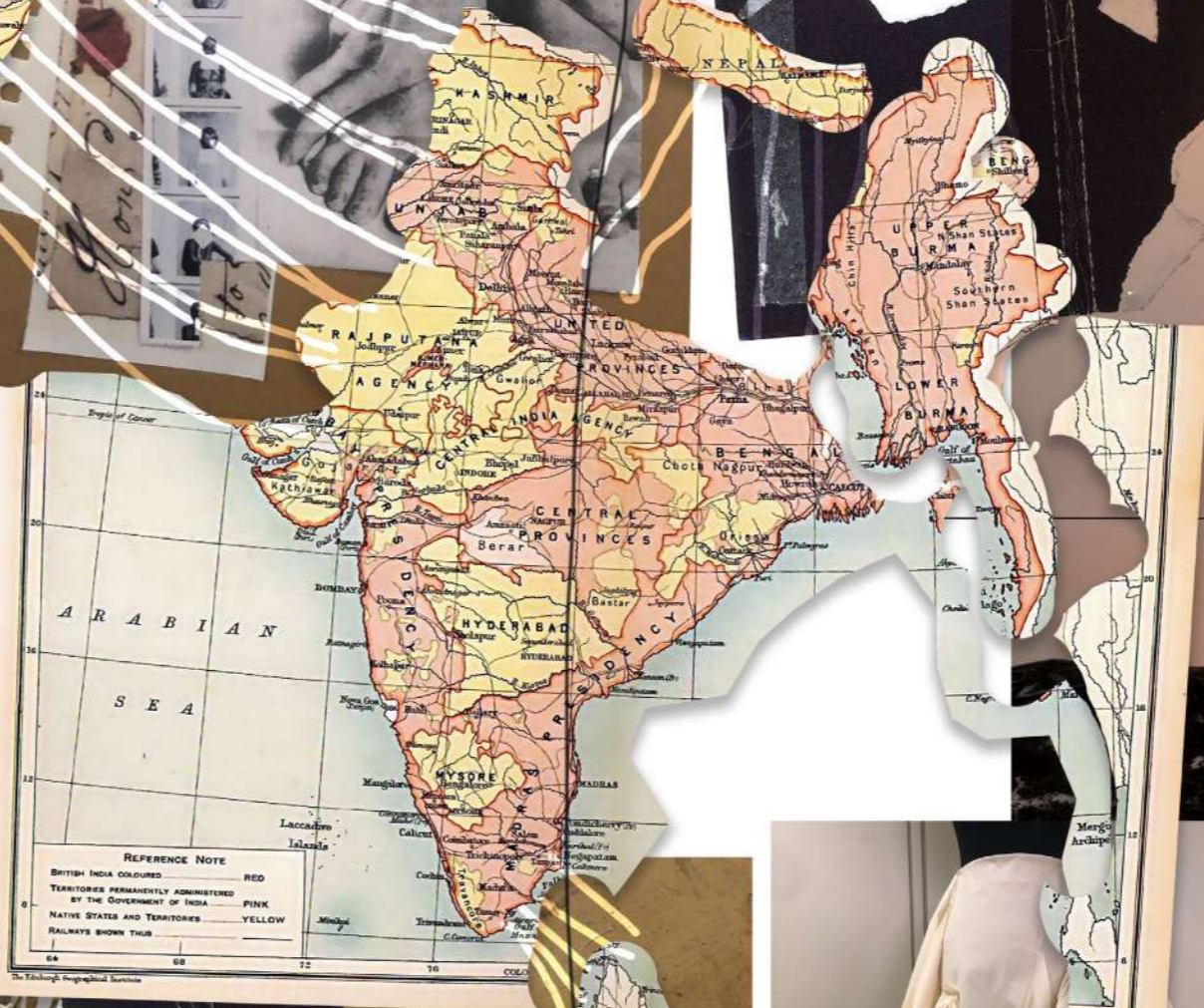


Divide & Rule

TEARING AT THE SEAMS

PAISLEY TEARS

NATURAL





व

न

य

मा

त

र

म्

॥

॥



PANTONE®  
14-0780 TCX  
Cyber Yellow



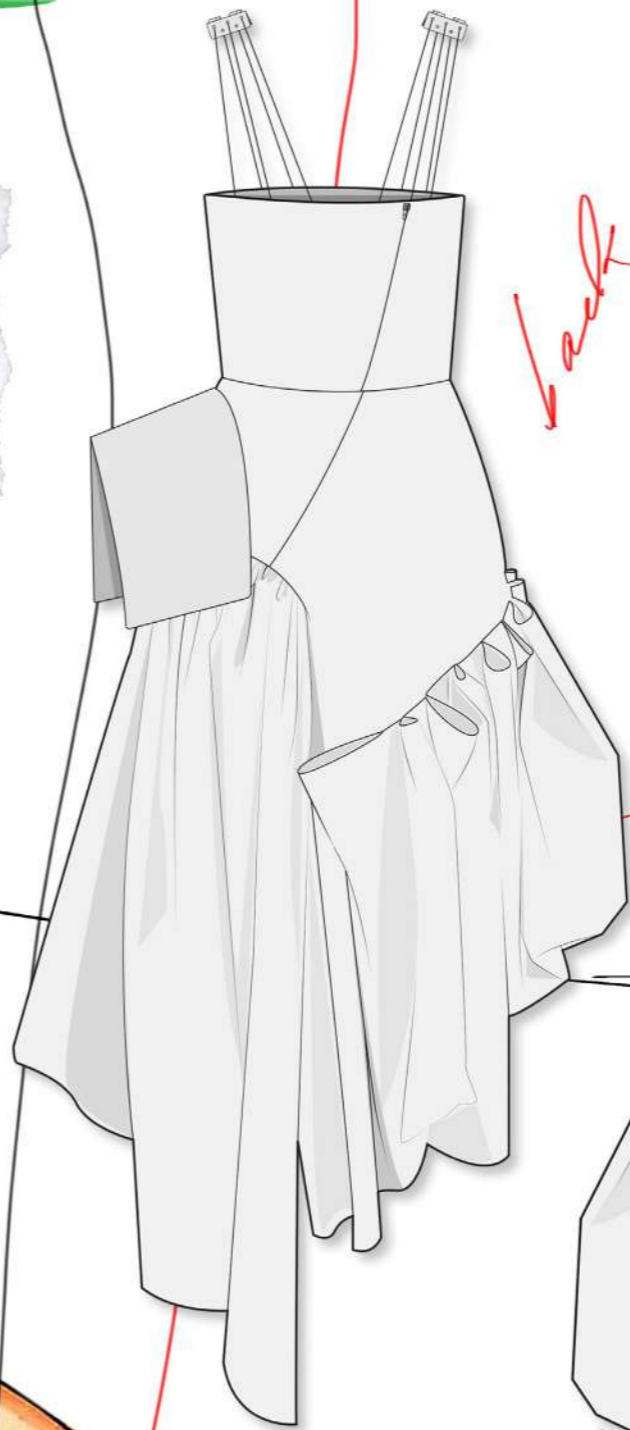
PANTONE®  
15-1062 TCX  
Gold Fusion



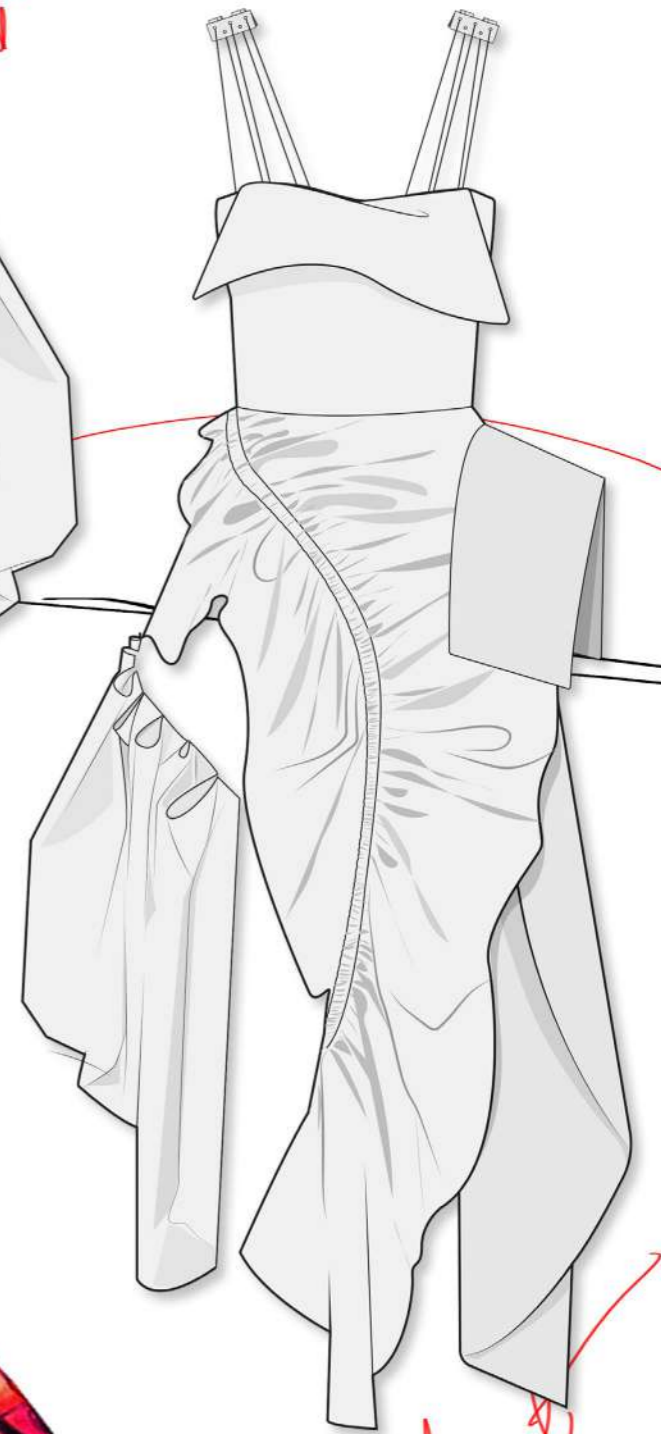
PANTONE®  
14-0957 TCX  
Spectra Yellow



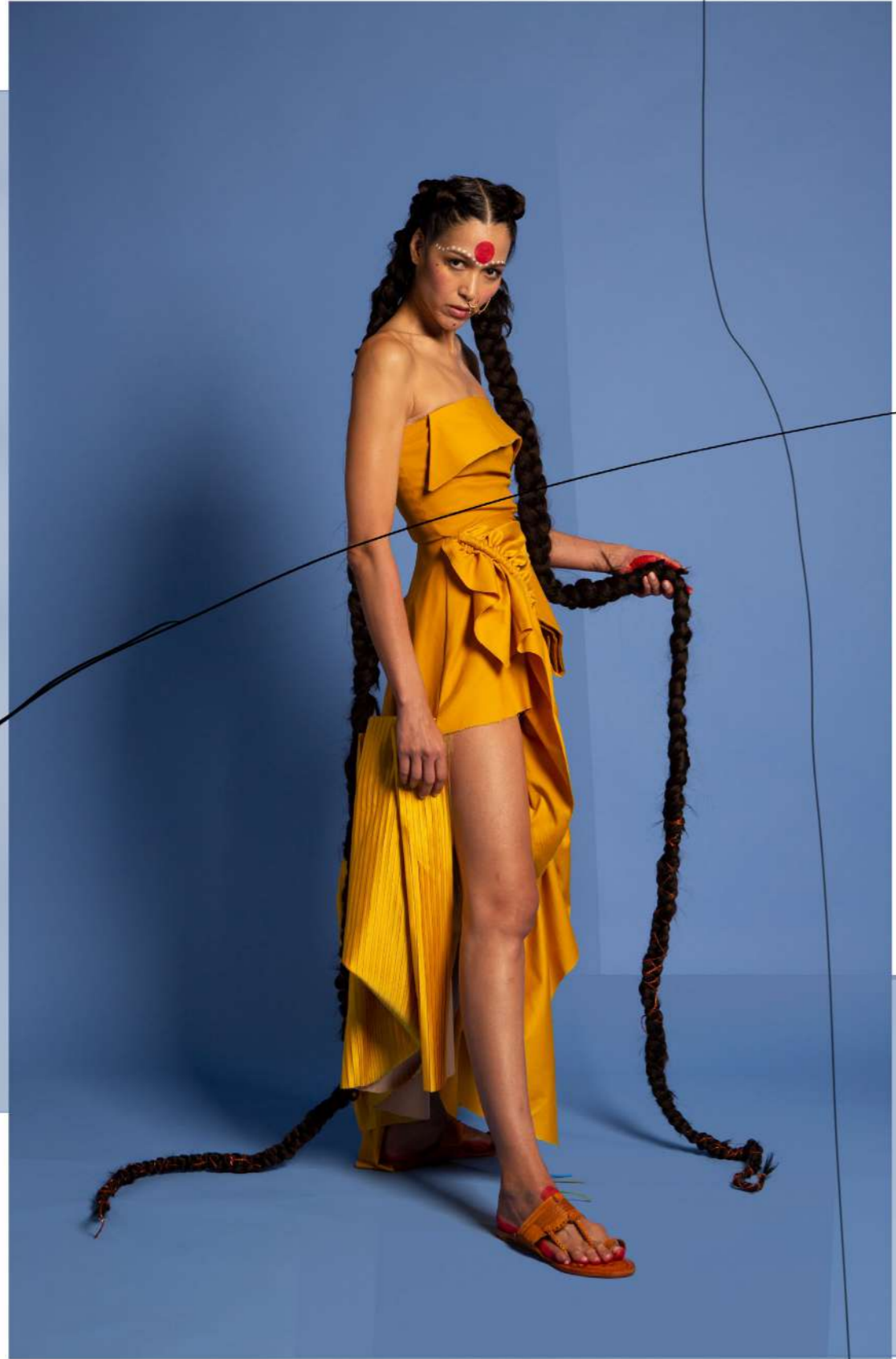
PANTONE®  
14-1064 TCX  
Saffron



back



front



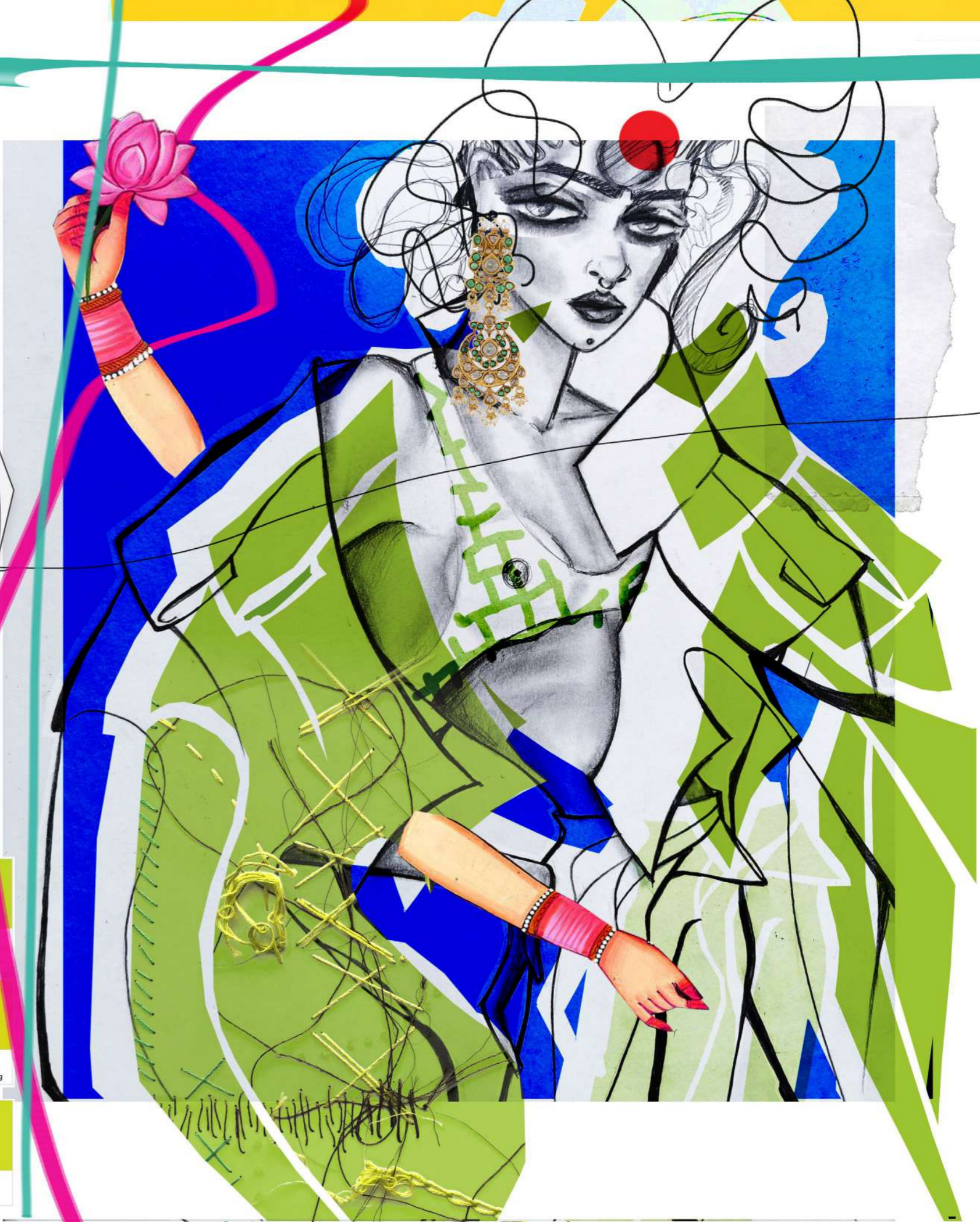




PANTONE  
13-0550 TCX  
Lime Punch

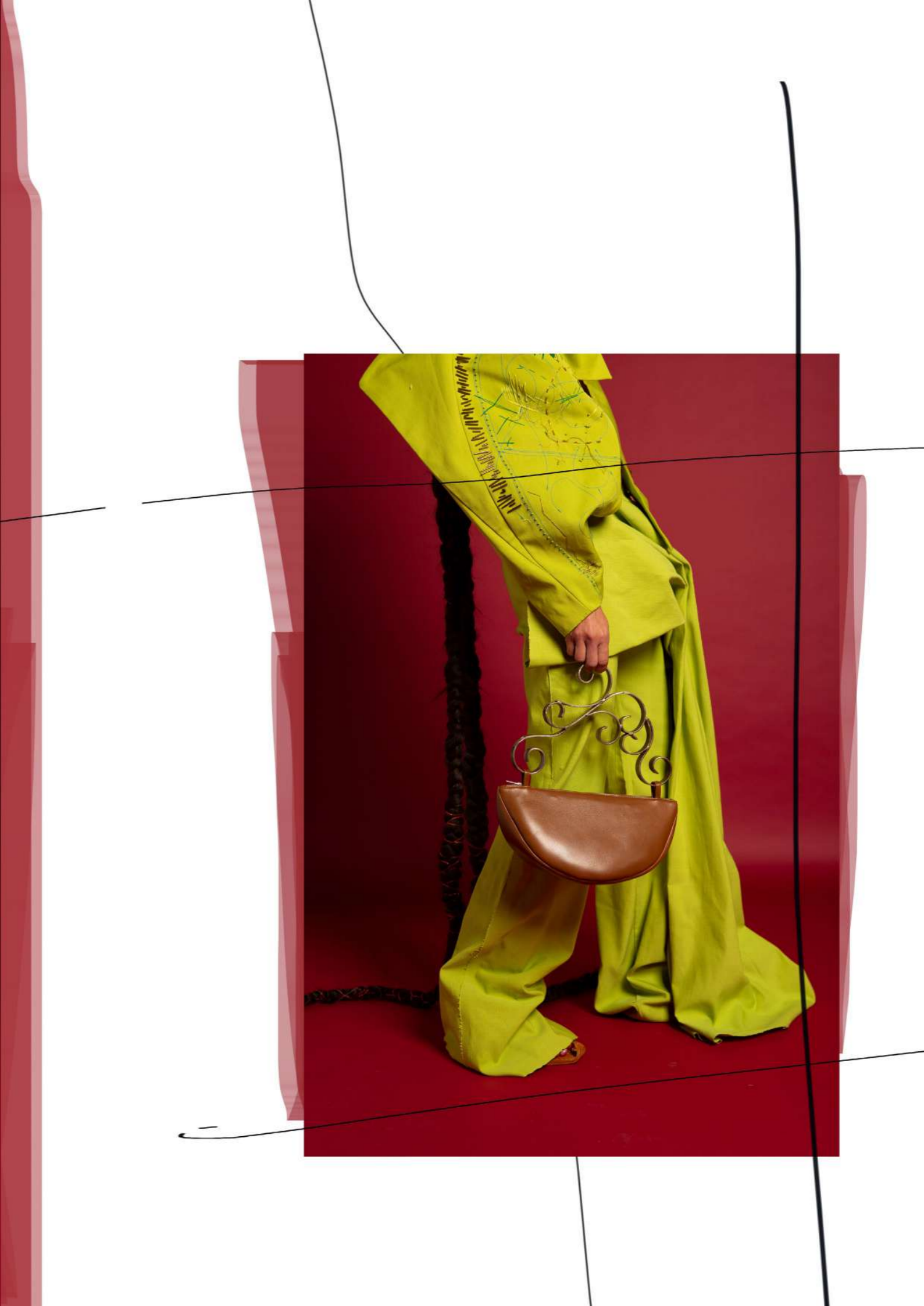
PANTONE  
13-0850 TCX  
Sulphur Spring

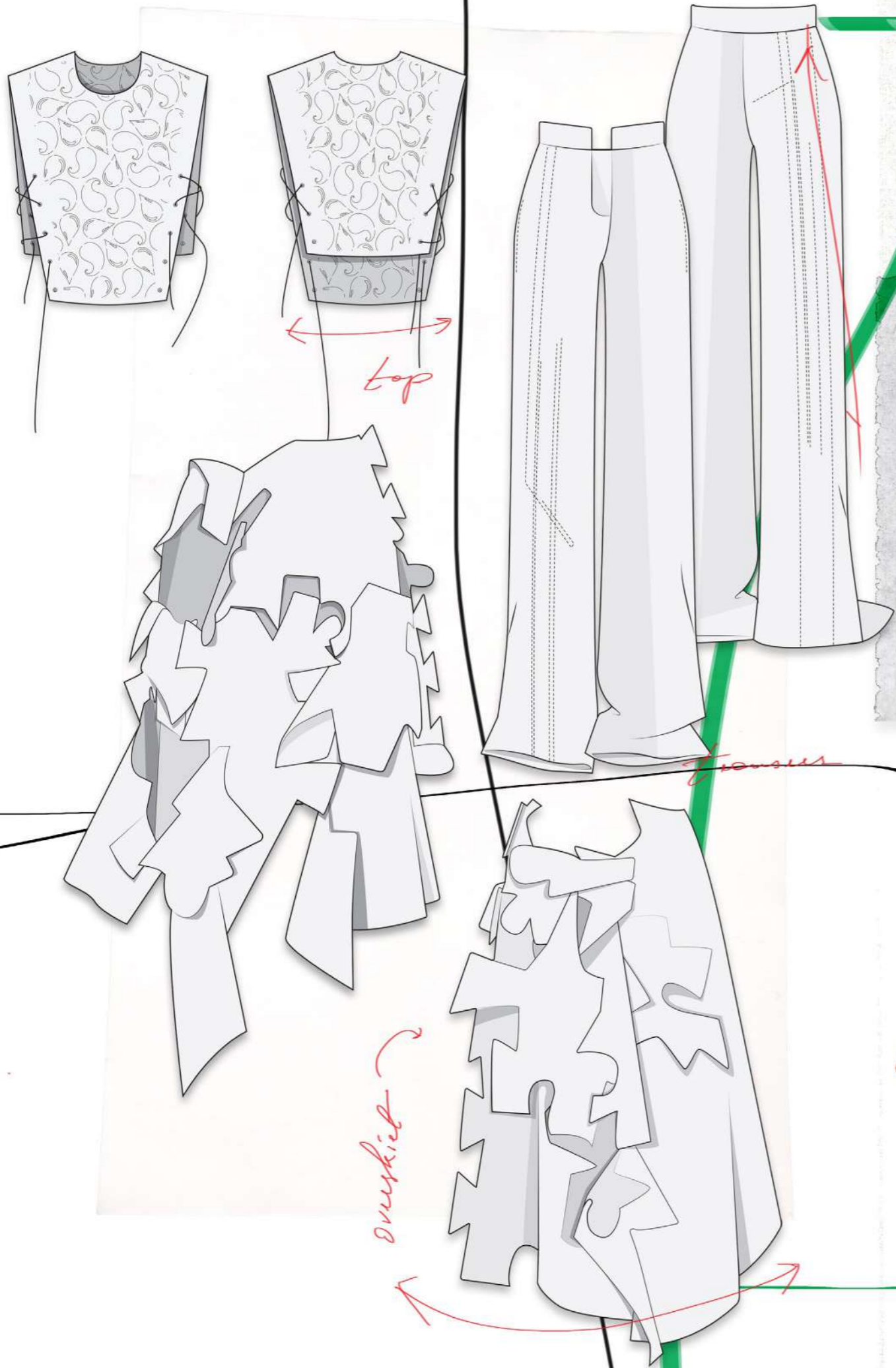
PANTONE  
13-0681 TCX  
Evening Primrose



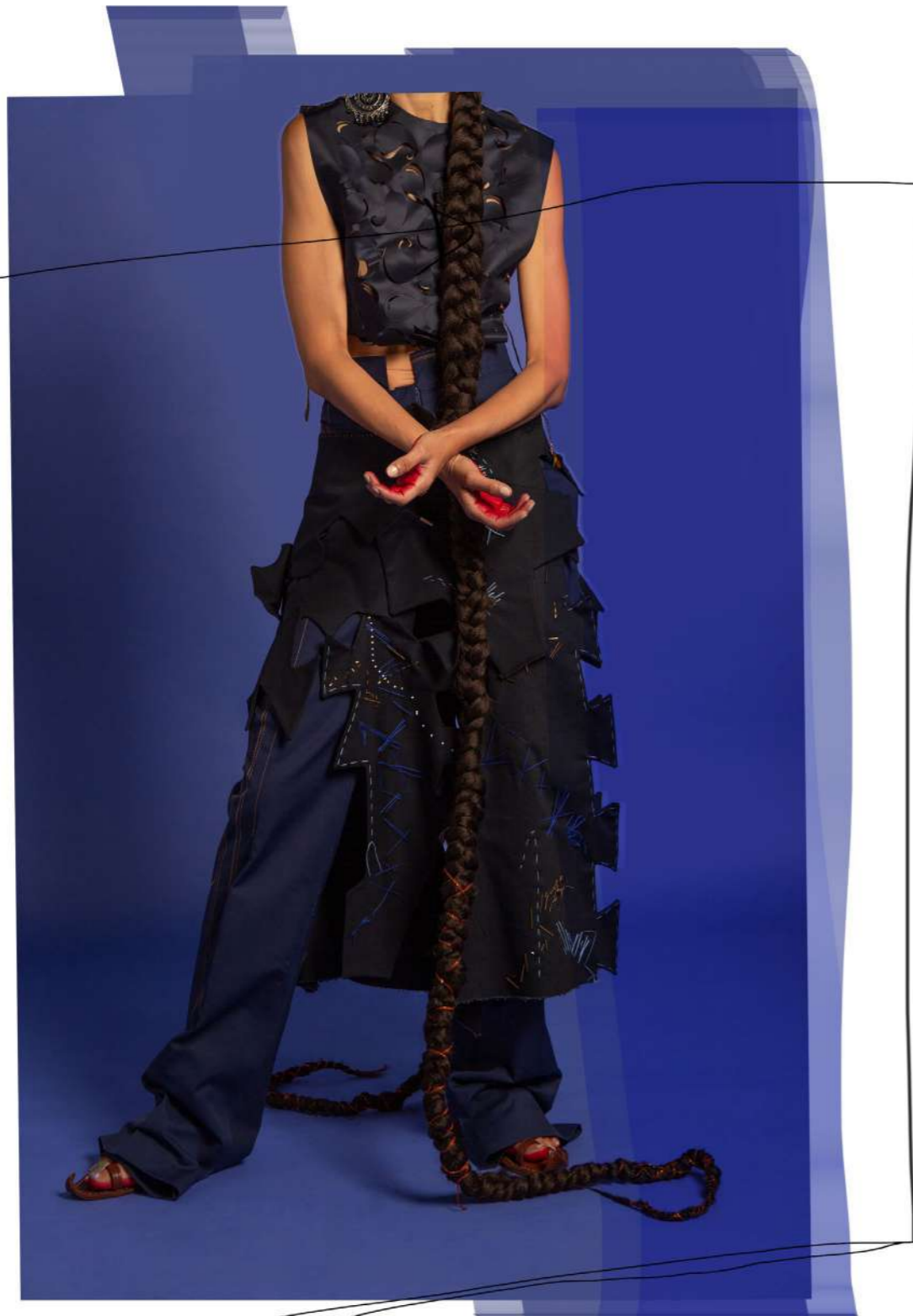








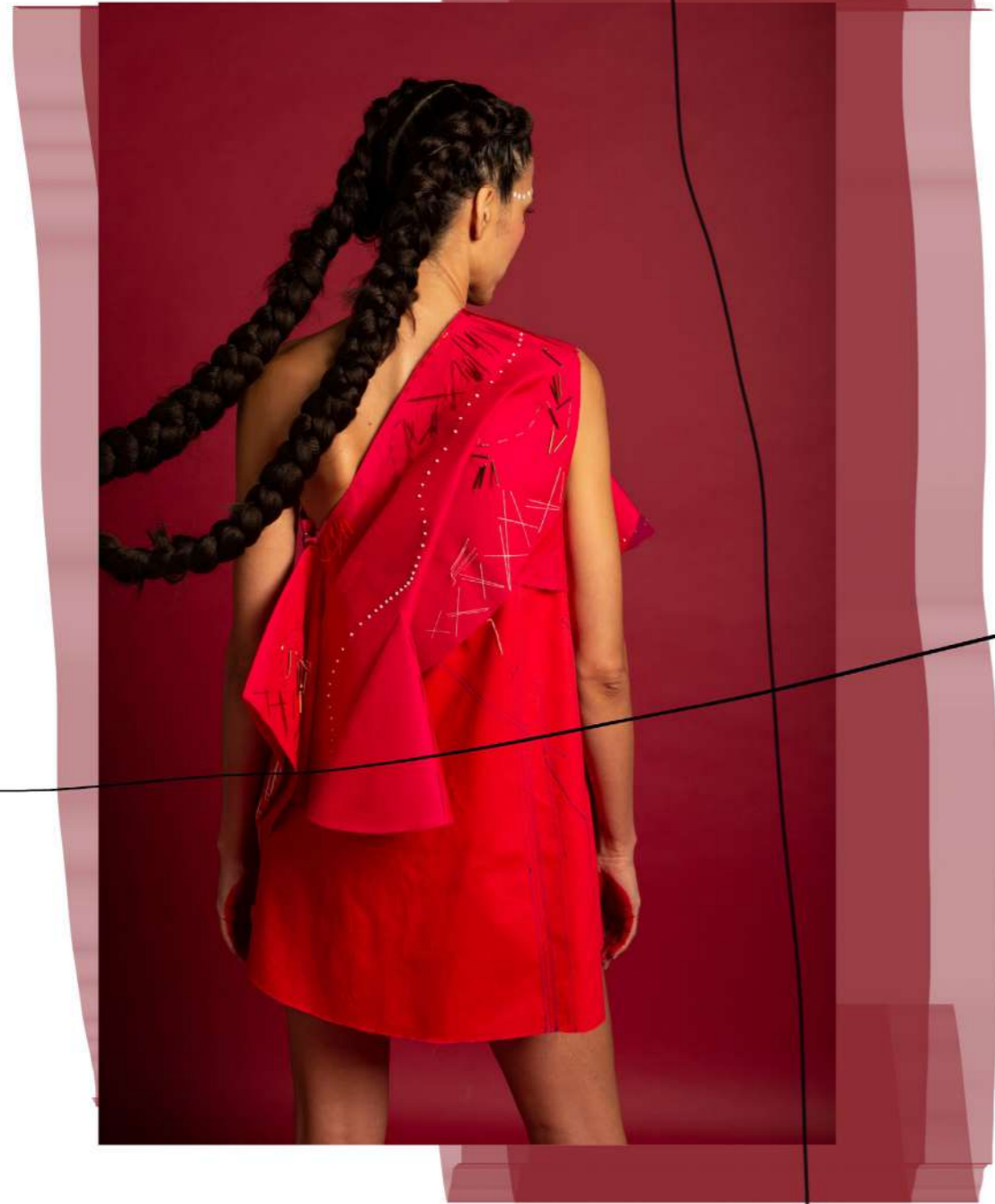


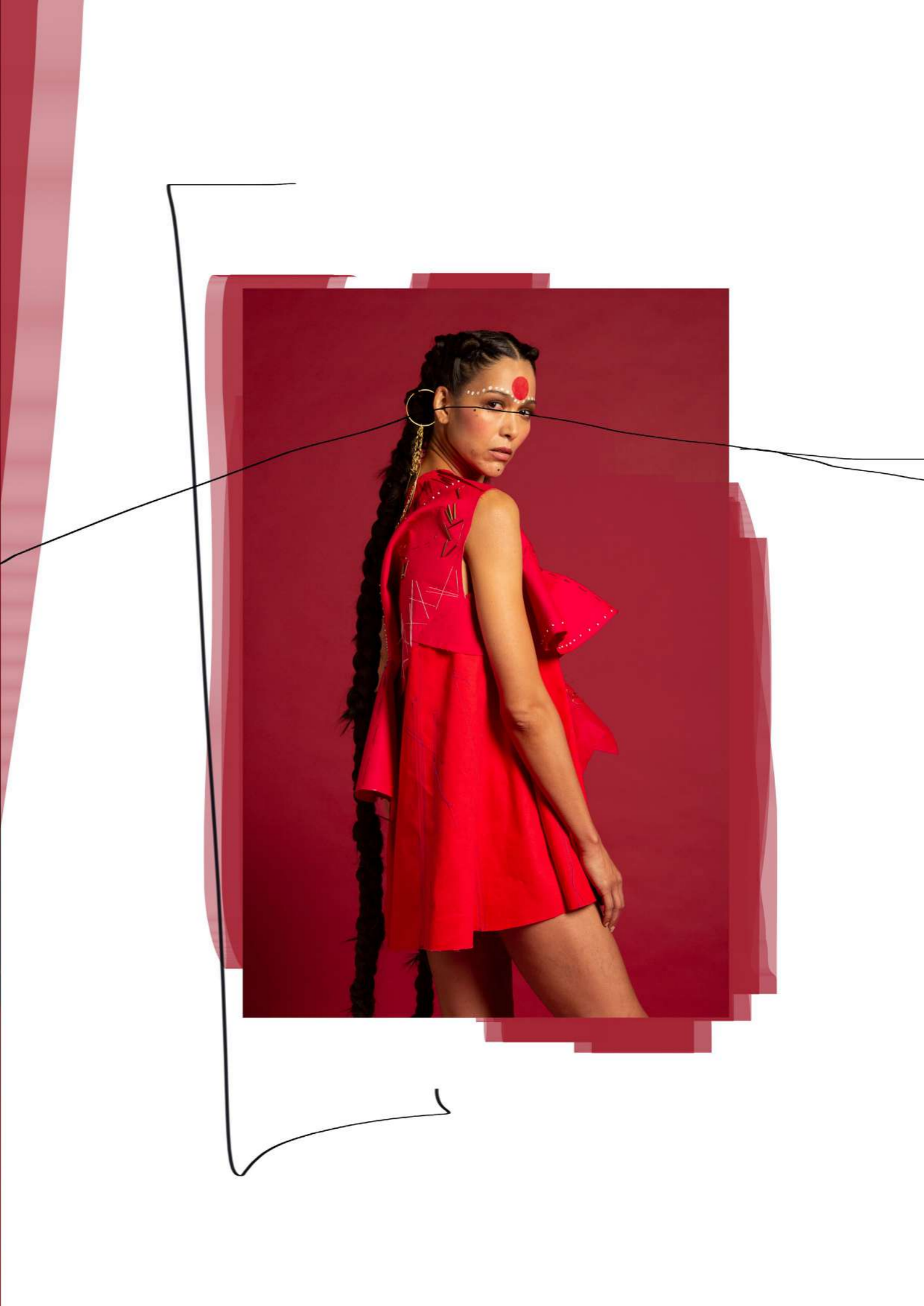




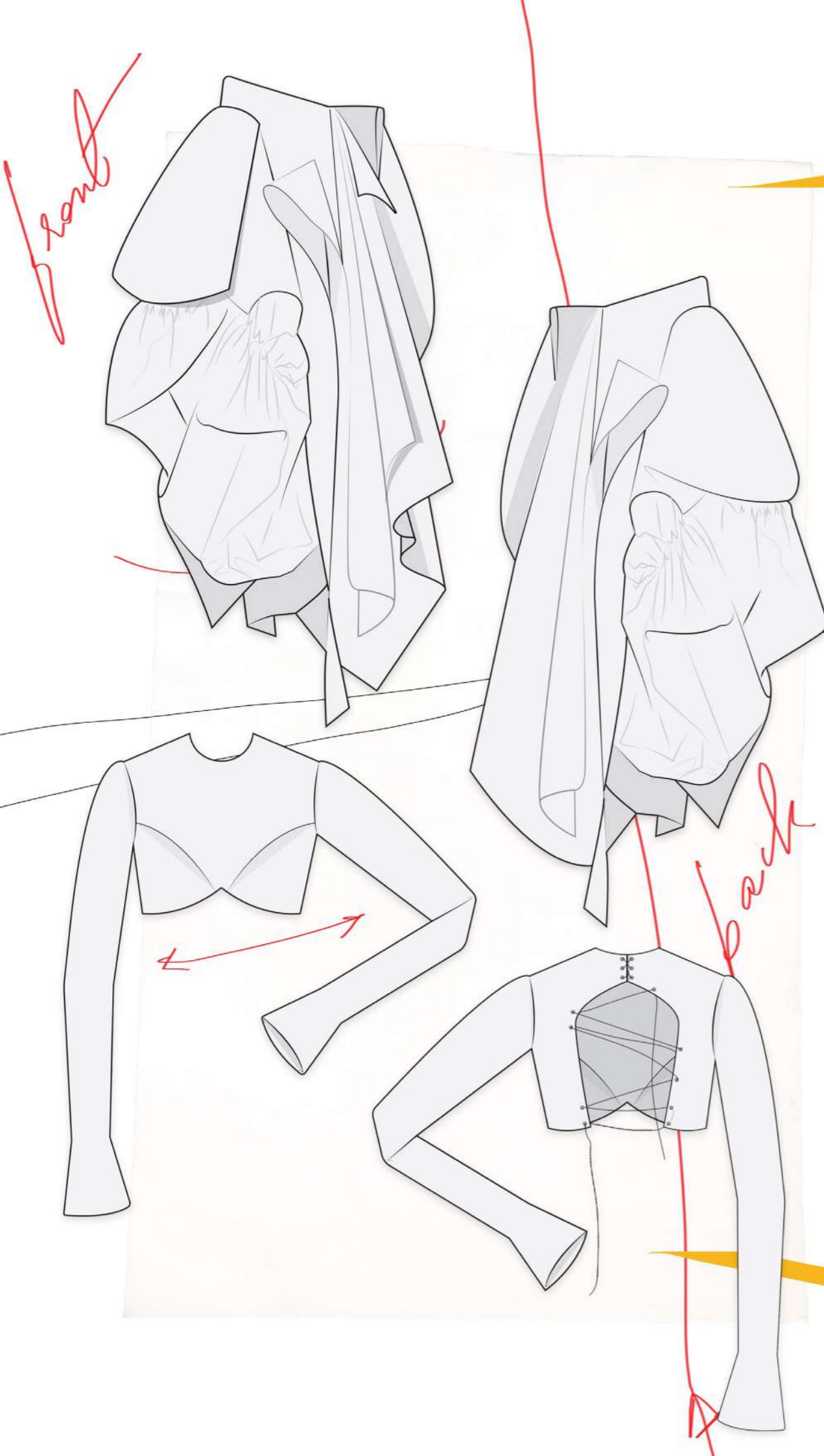
*front*

*back*

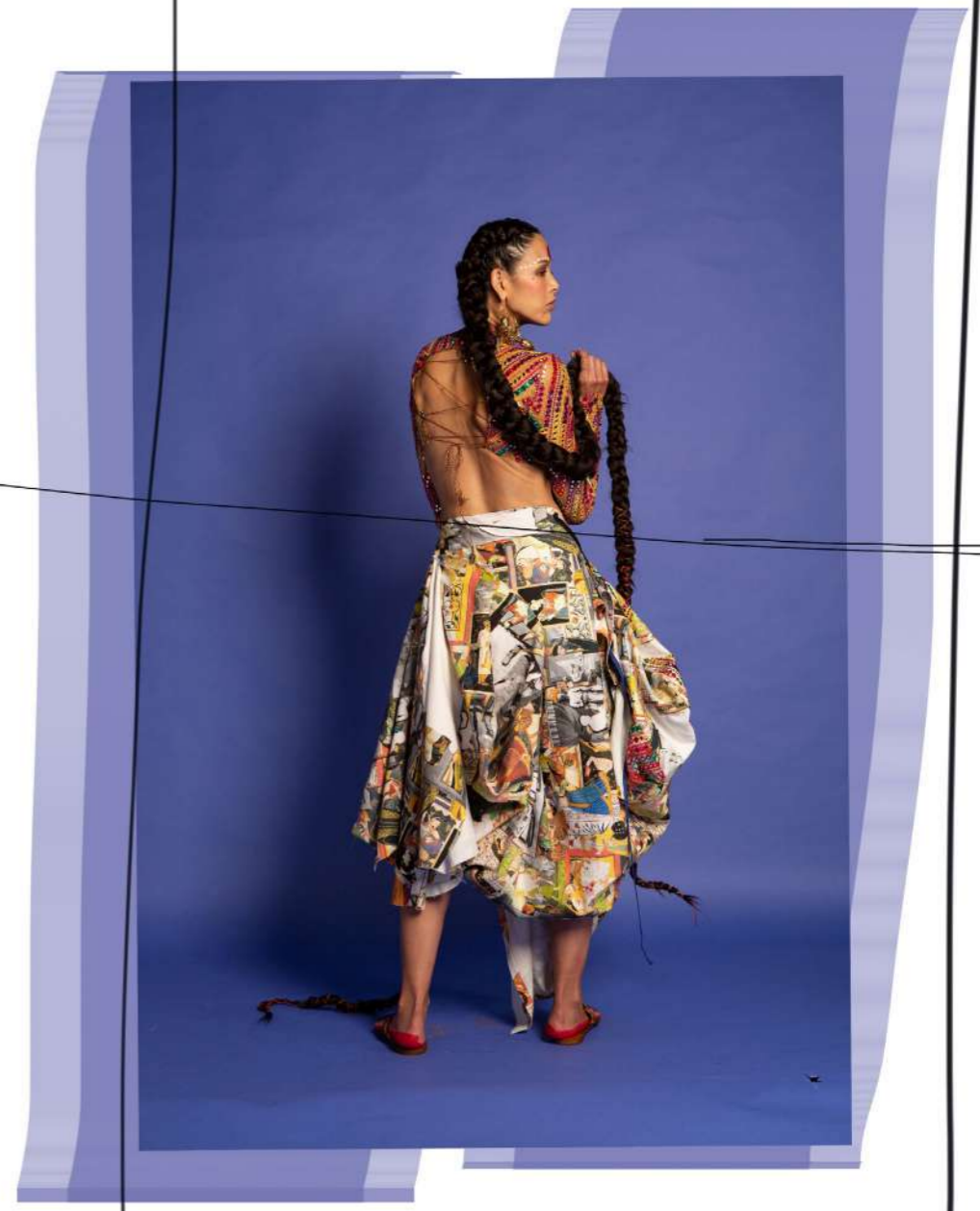


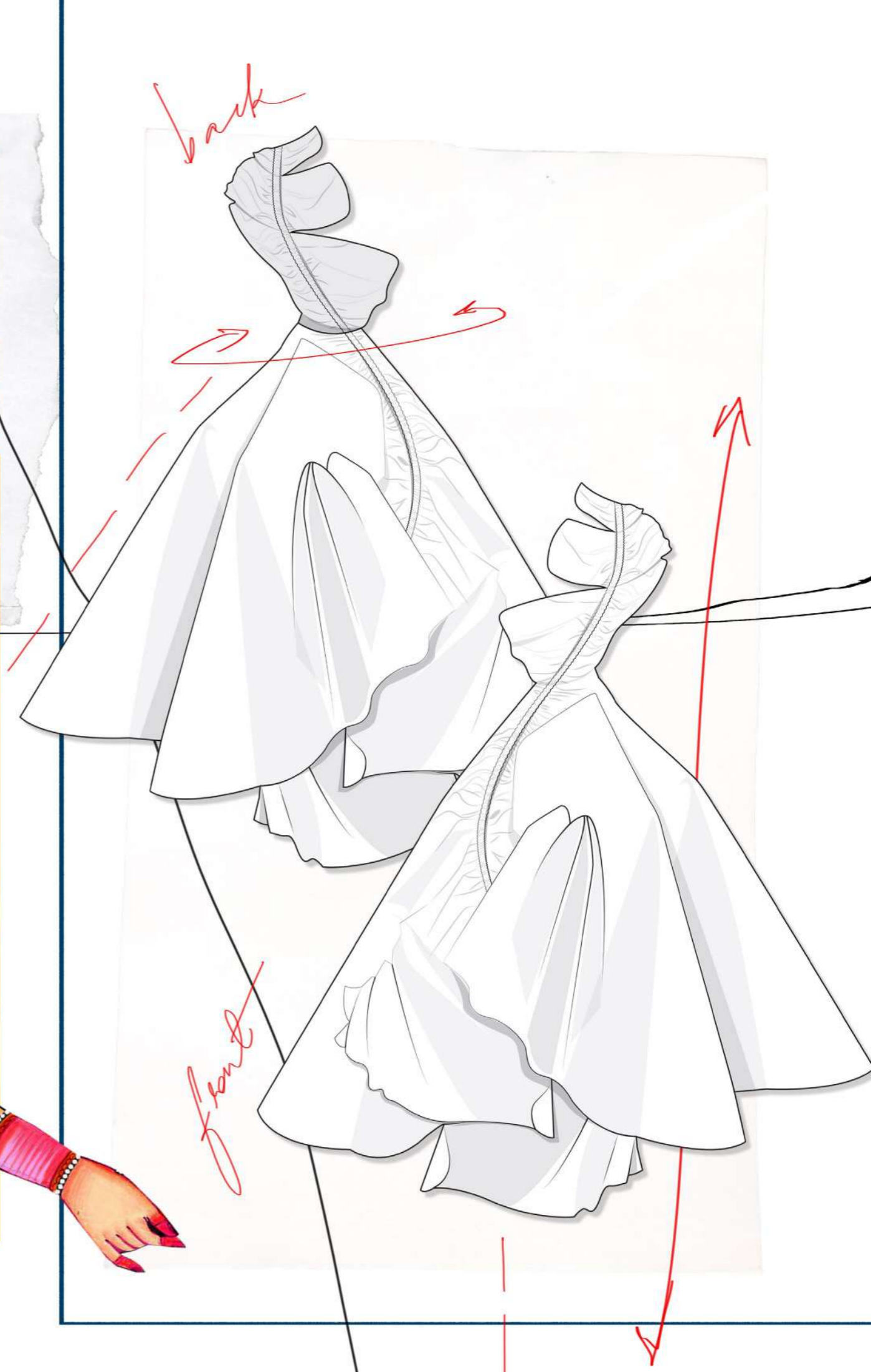
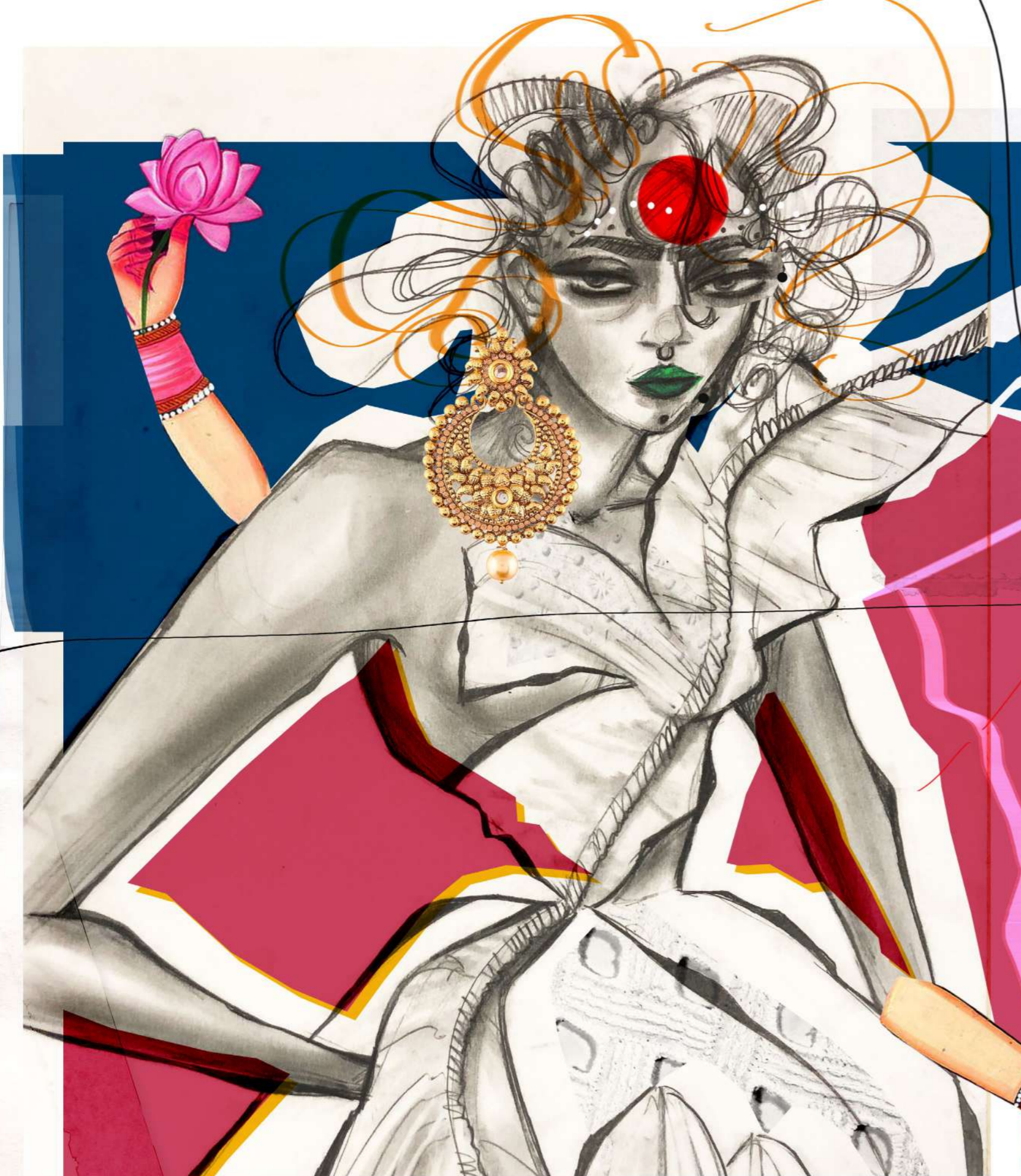


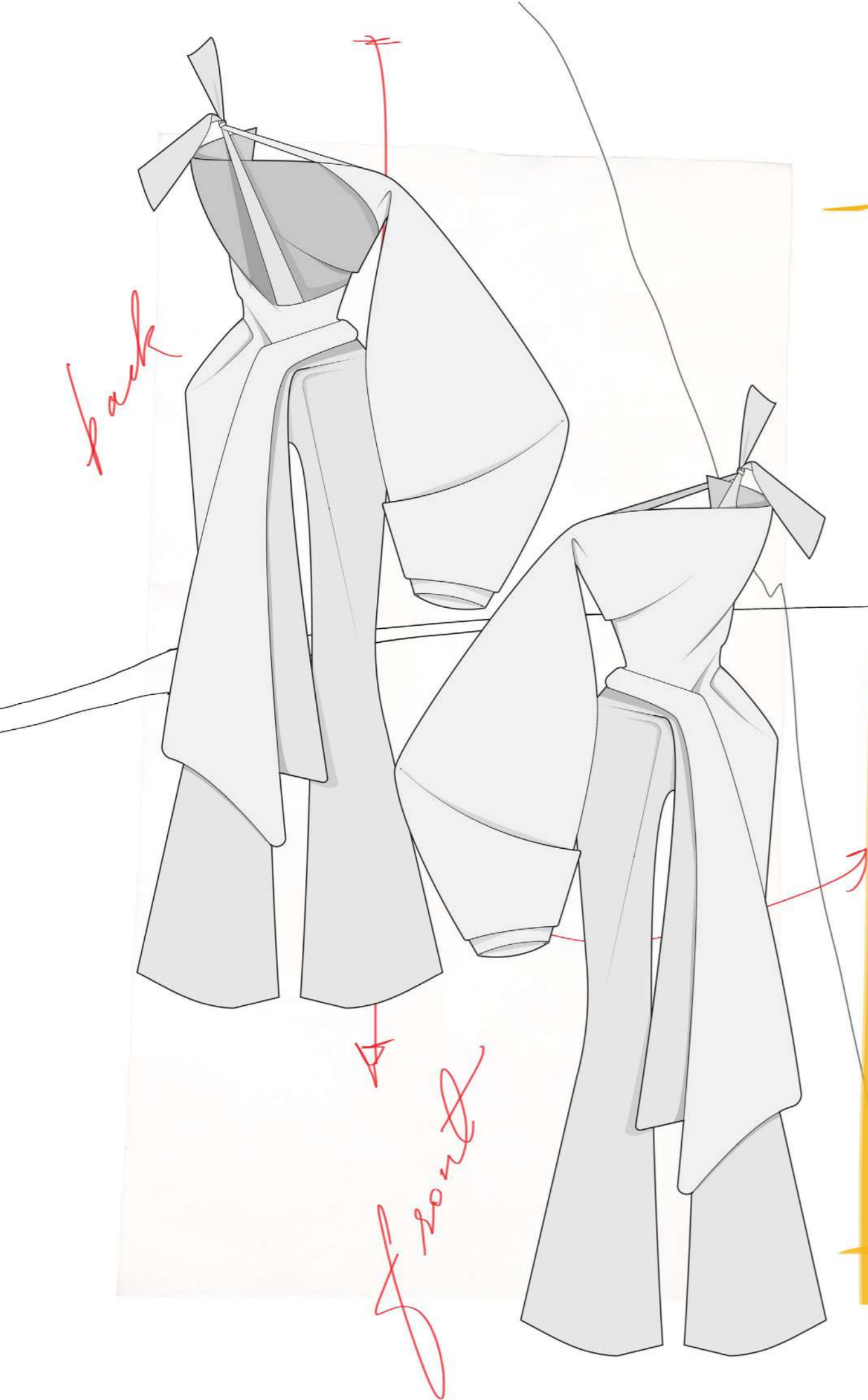


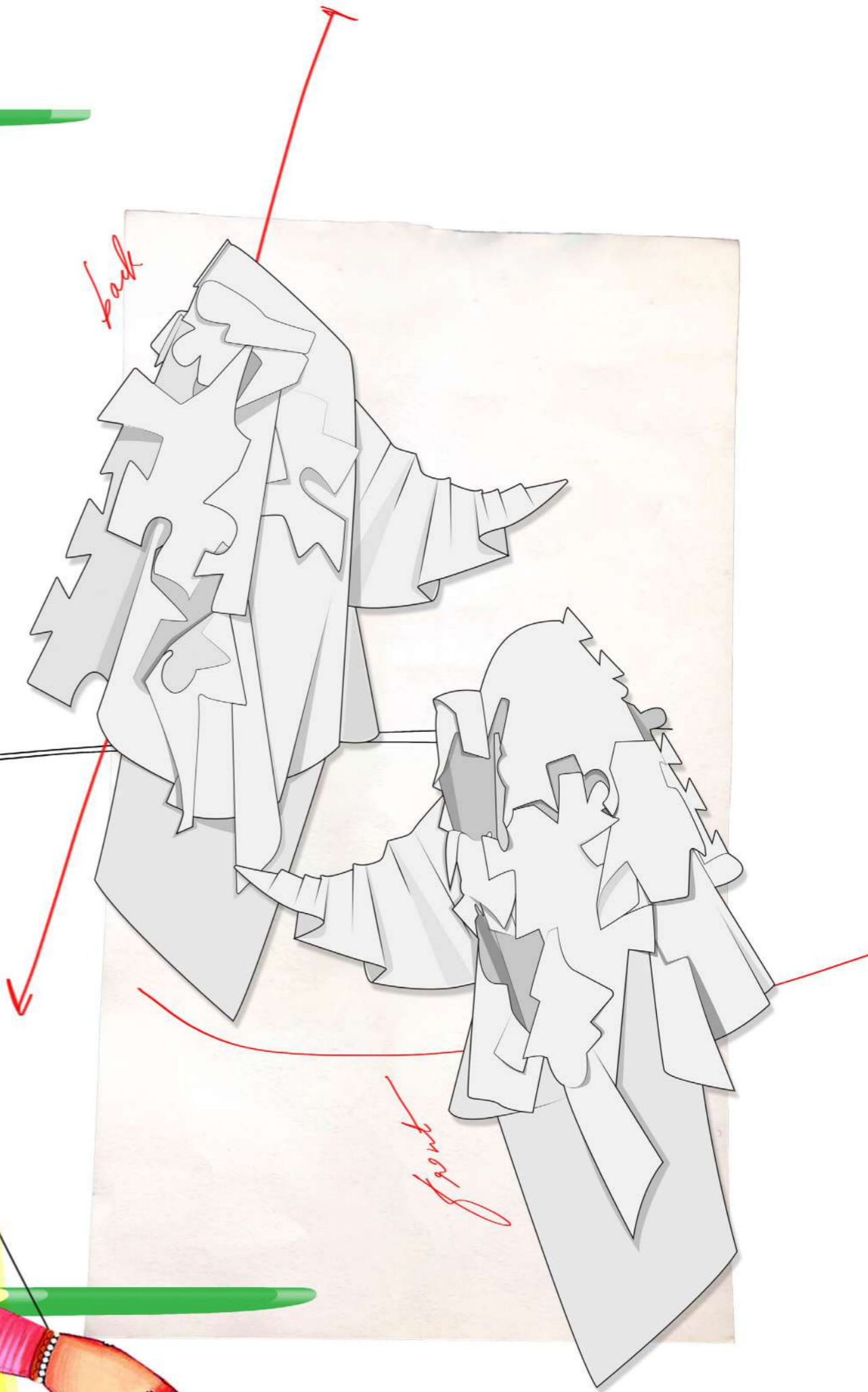
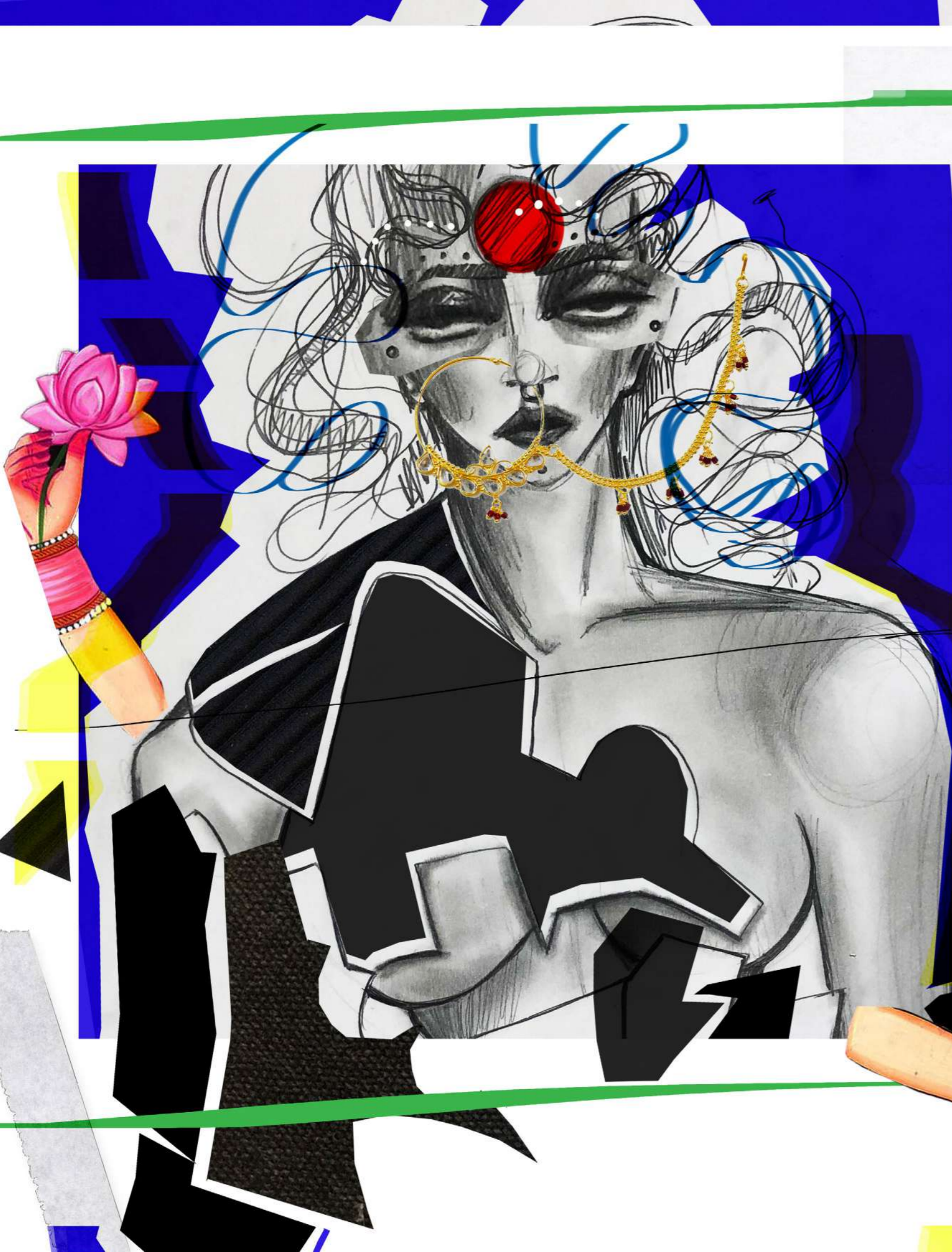








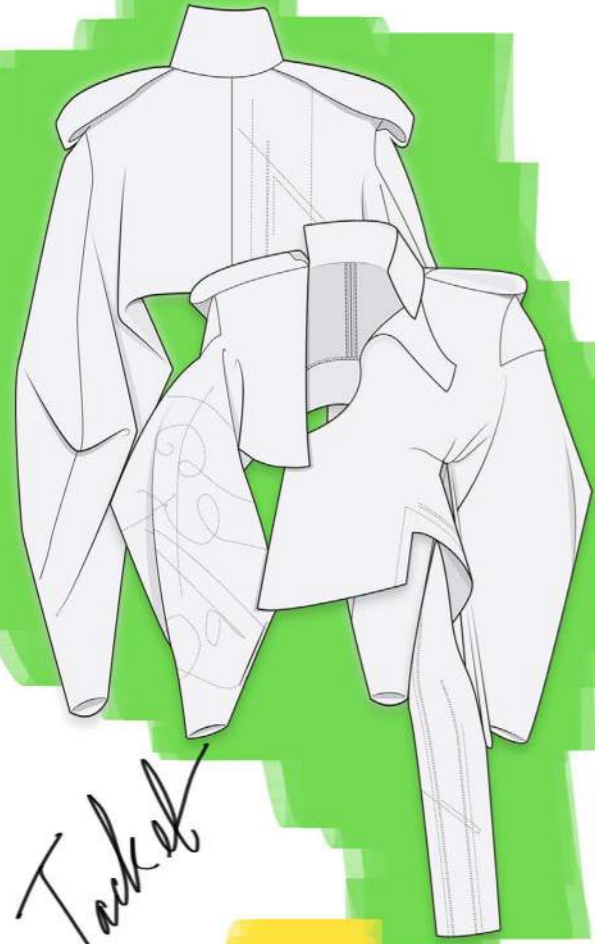




PANTONE  
19-0503 TCX  
Jet Black

PANTONE  
19-4004 TCX  
Tap Shoe

Jackel



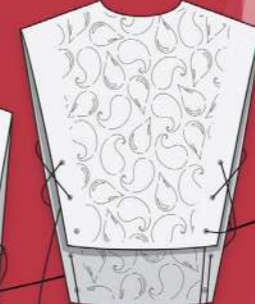
Dress



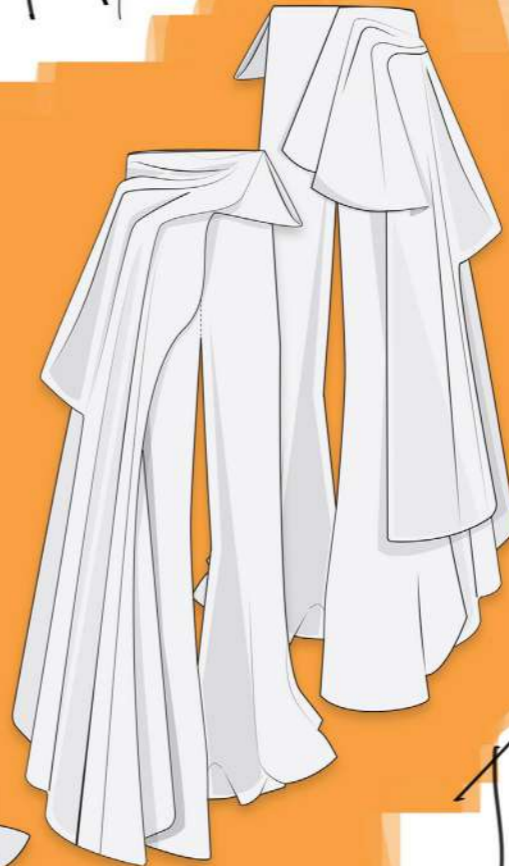
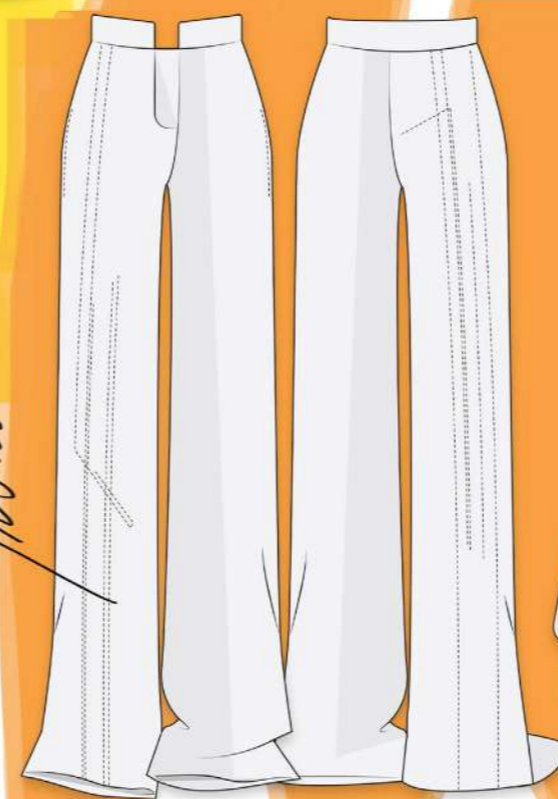
Skirts



Tops



Trousers



Jump suit

