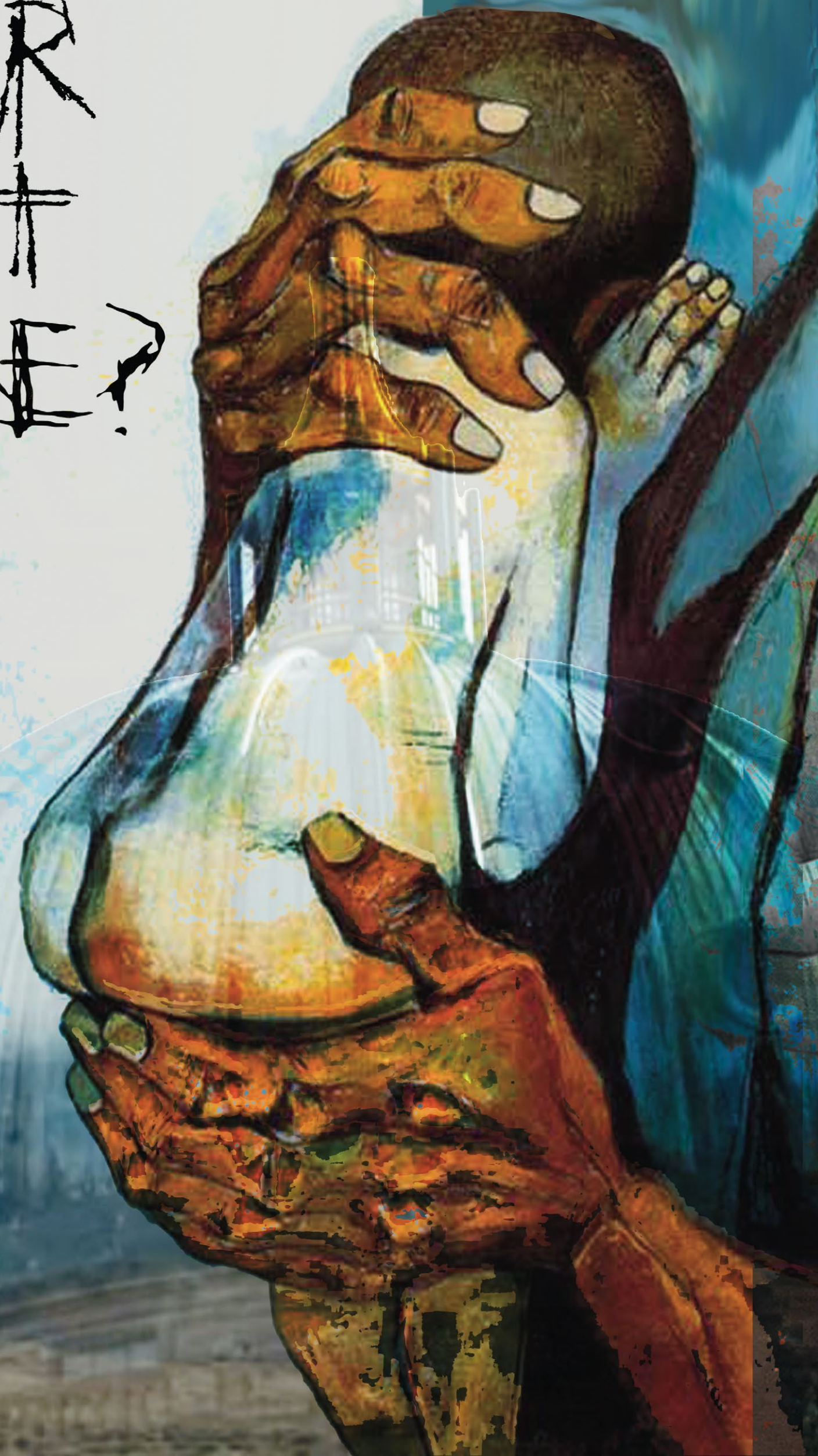




SARA REKALDE

WHAT'S UR
GREATEST
TREASURE?



Amor y control

ALADES CON SON DEL SOLAR



PANTONE®
19-3911 TCX
Black Beauty

PANTONE®
11-0109 TSX
Cappuccino Foam

PANTONE®
13-3803 TCX
Lilac Ash

PANTONE®
19-4922 TCX
Teal Green

PANTONE®
12-1007 TCX
Pastel Rose Tan

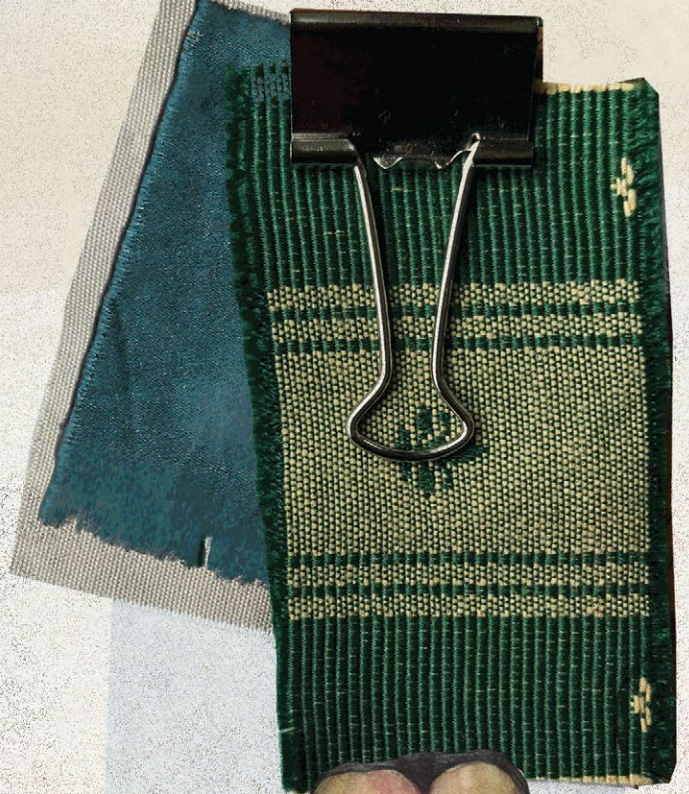
PANTONE®
14-0445 TCX
Bright Chartreuse

PANTONE®
16-5917 TCX
Malachite Green

PANTONE®
15-0646 TCX
Warm Olive

PANTONE®
16-6264 TSX
Green Spring

PANTONE®
19-1529 TCX
Maroon Banner



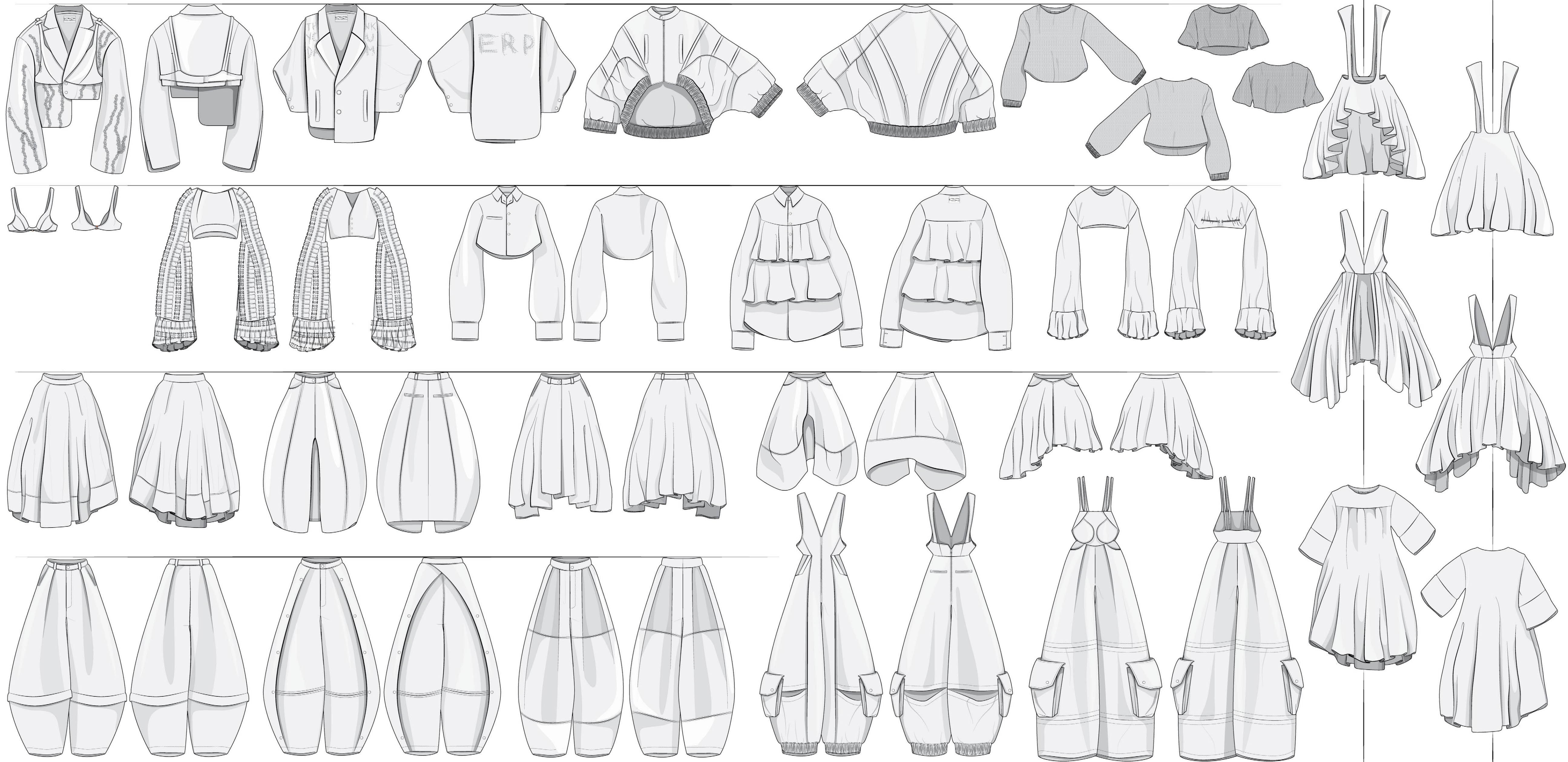




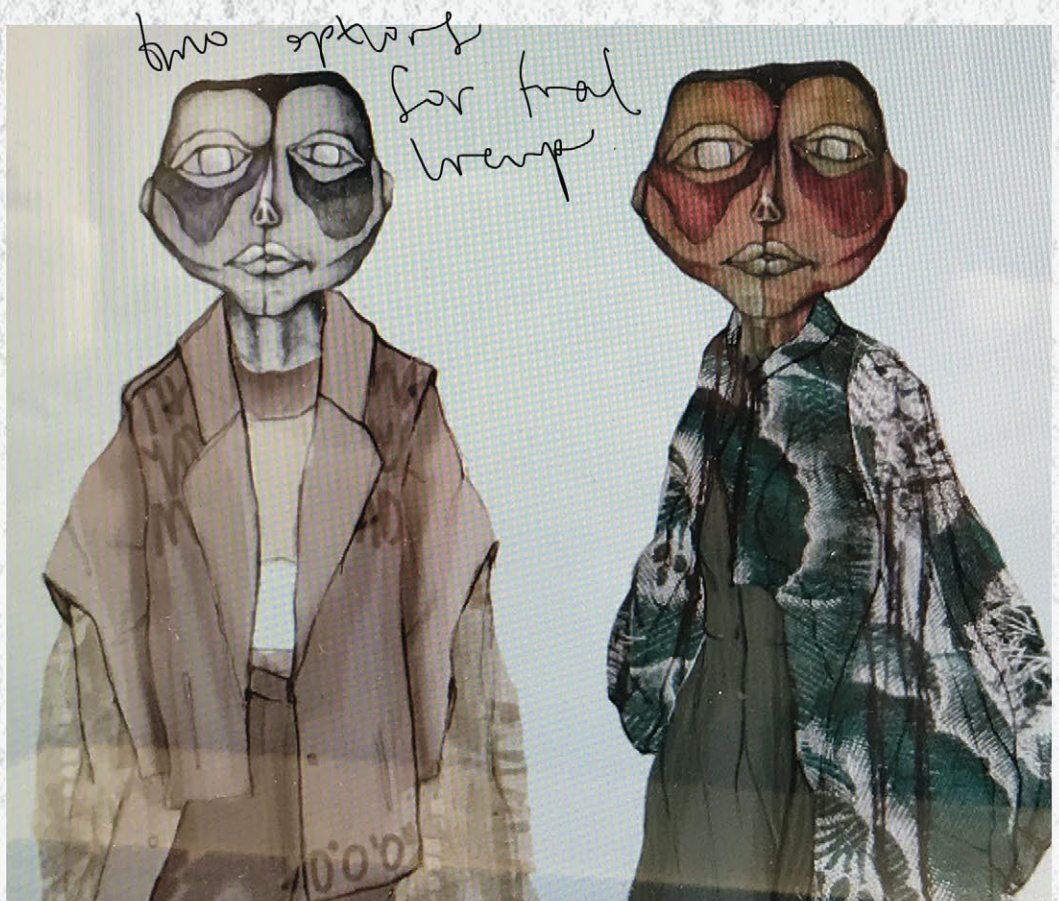
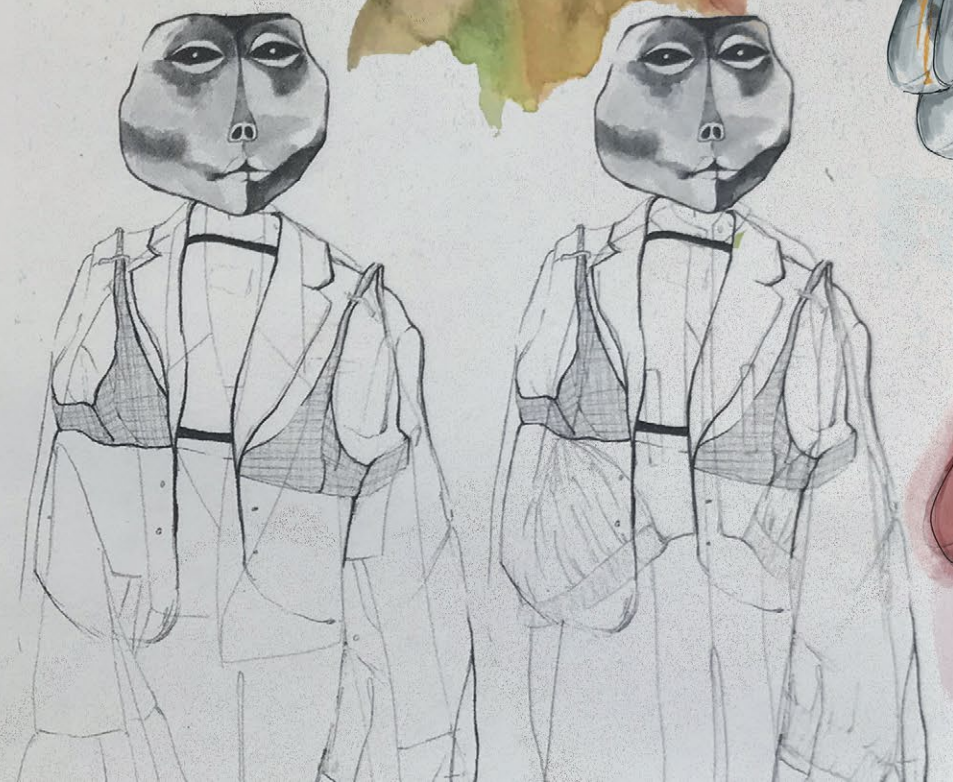
Illustration
faded.



Illustration
Denny
watercolor



Denny
in front

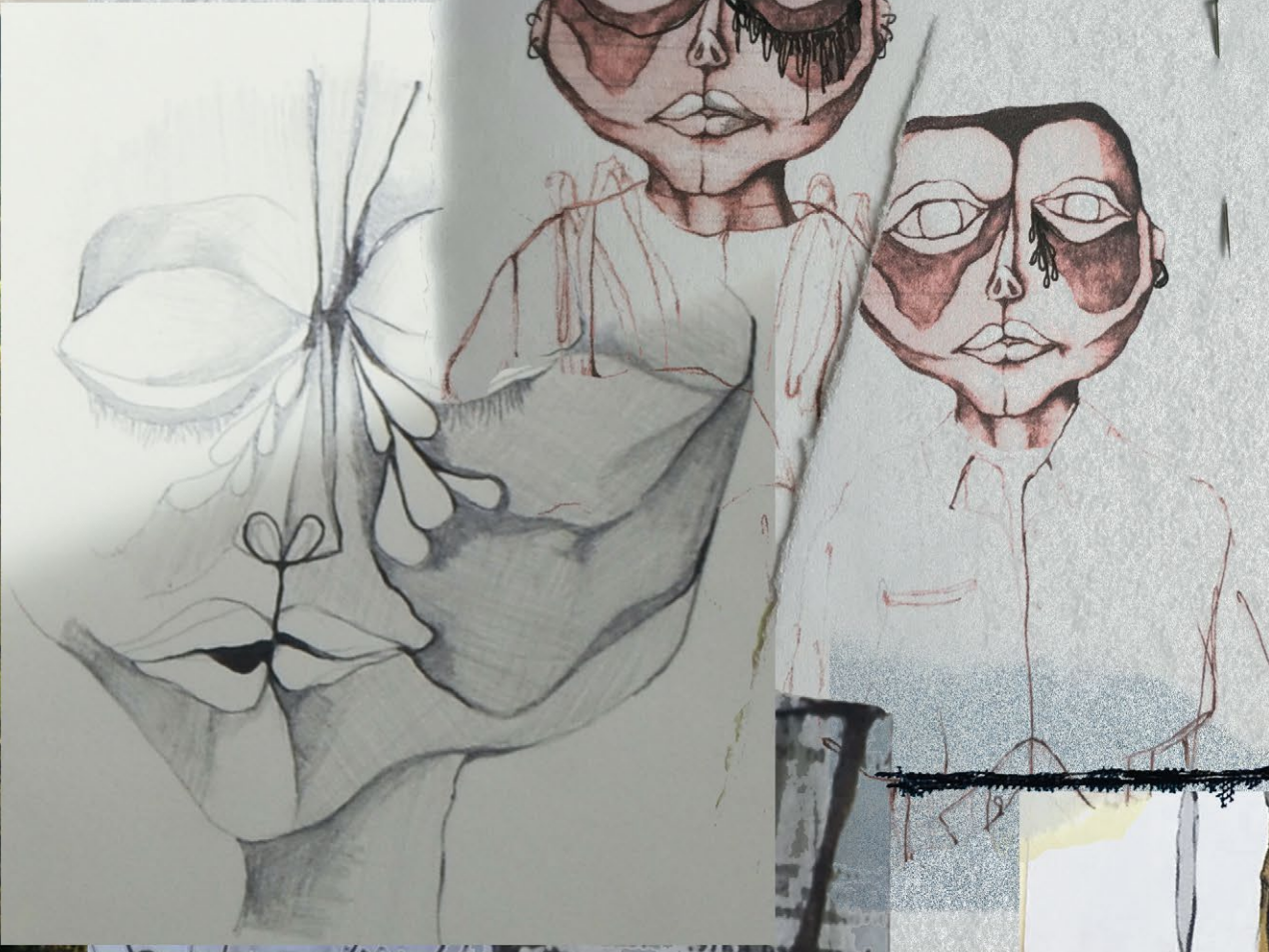


two options
for final
warp





El Sabor



TERP
STATION
EXTERN-

PROJEKT

WATT

MOM
+
DAD

QUITO QUITO QUITO

HAND
DYED.



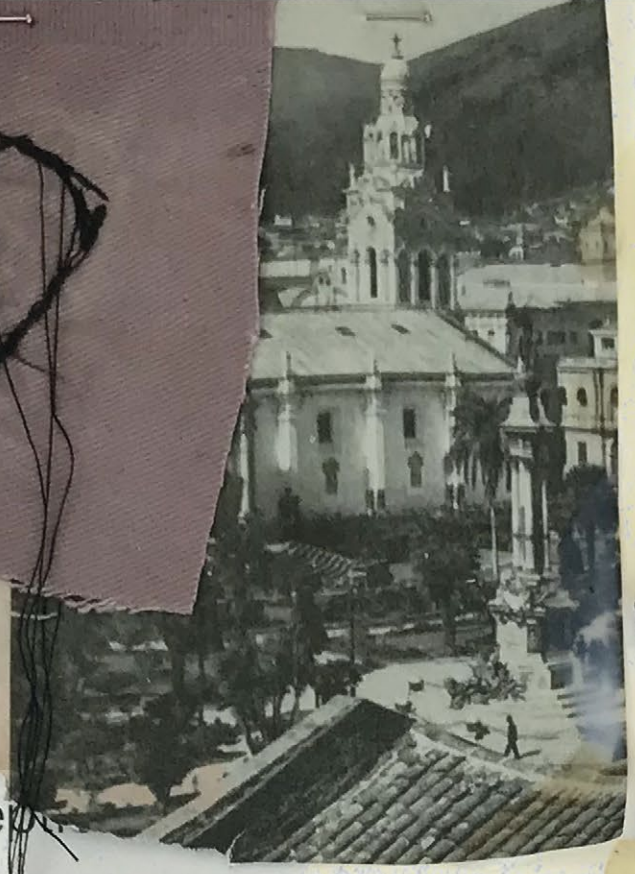
Emilio Rekalde
@emirek_

Cotopaxi, 22 de sep



Translate Tweet
Emilio Rekalde

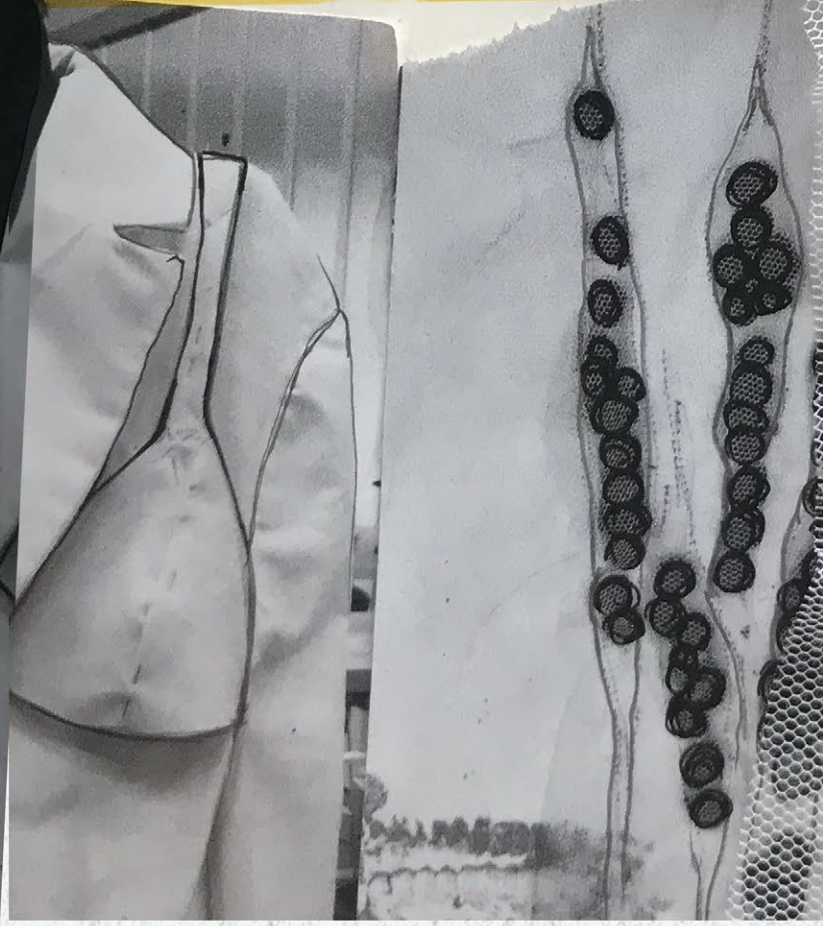
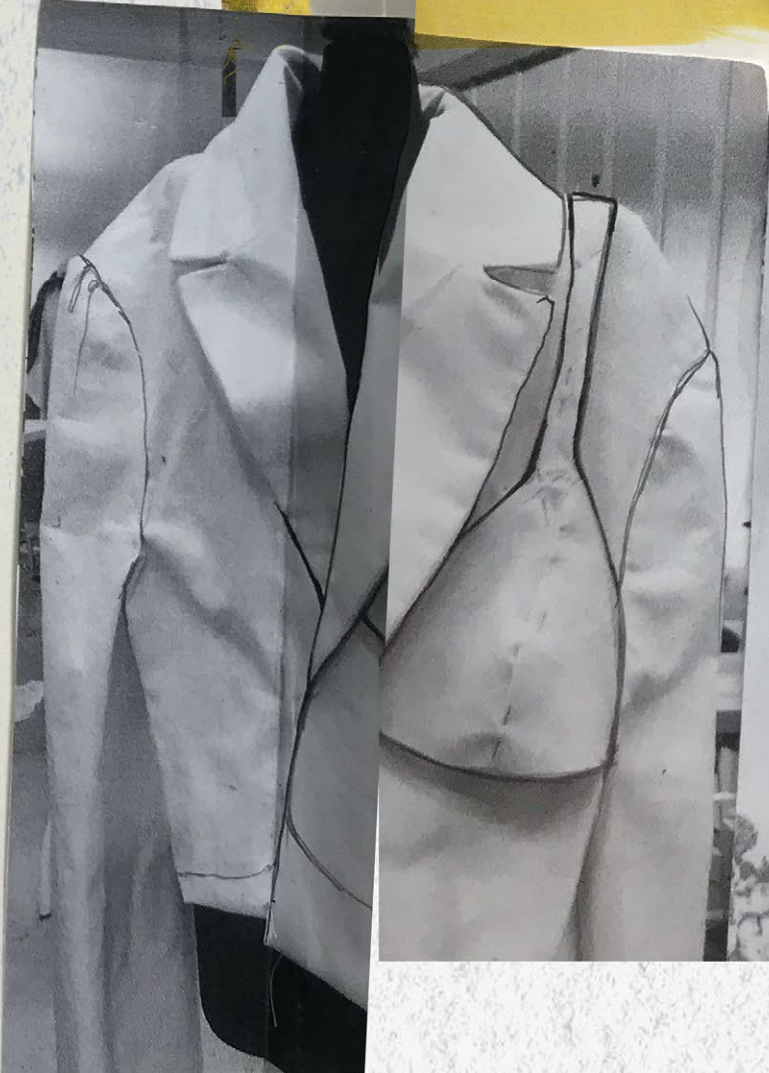
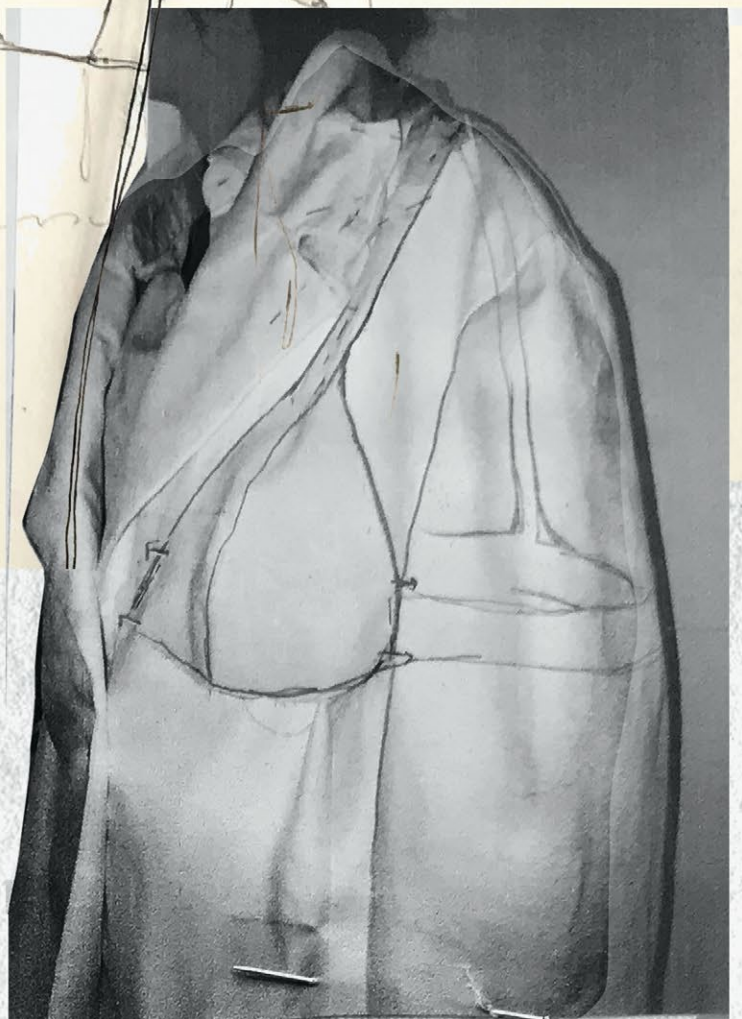
11:40 · 09/08/2015 · Twitter for iPhone





COLLAPSIBLE SHOULDER

open



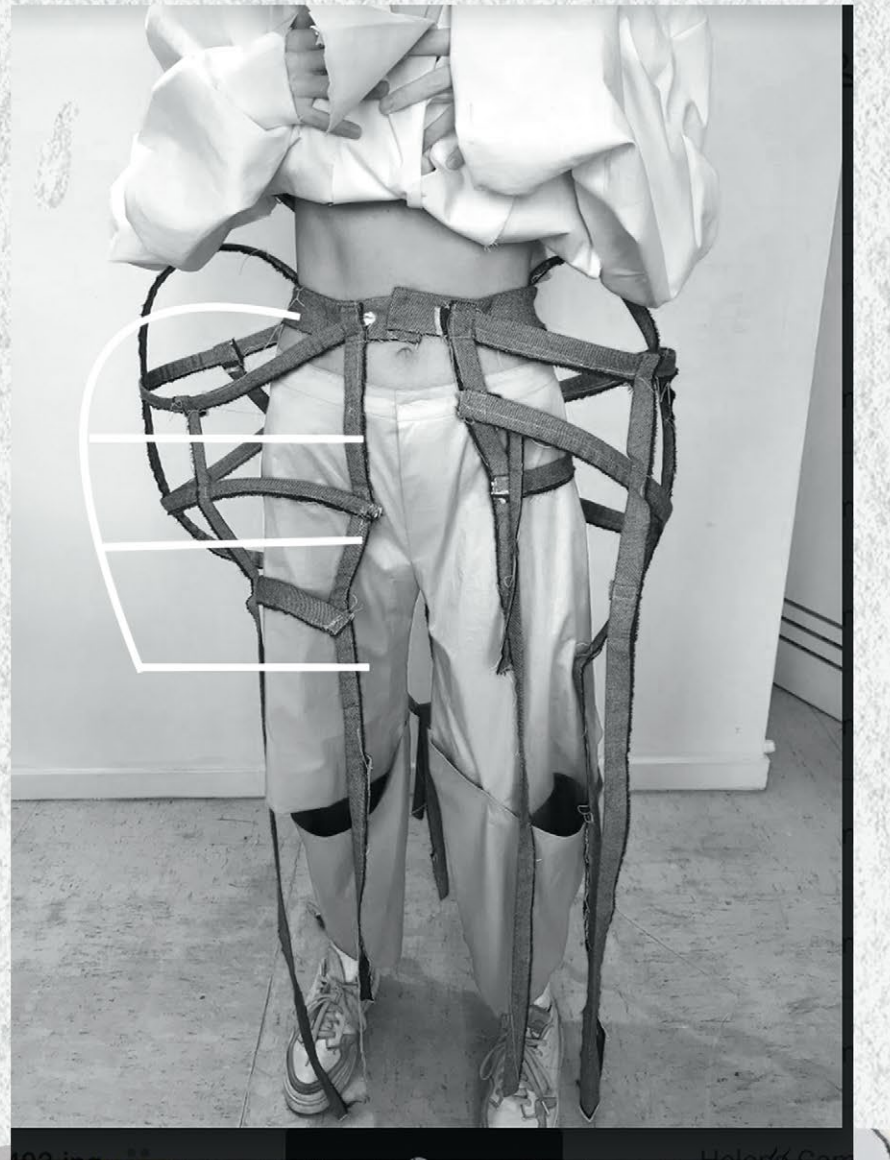
special pattern
mesh !!!





first fitting.

maybe a bit shorter



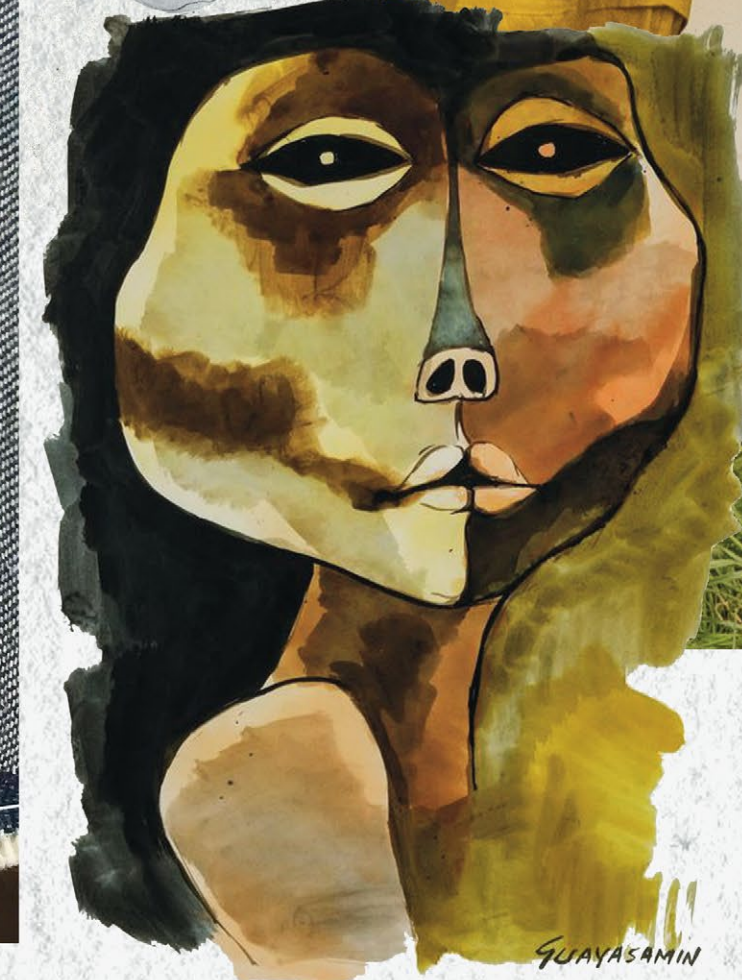
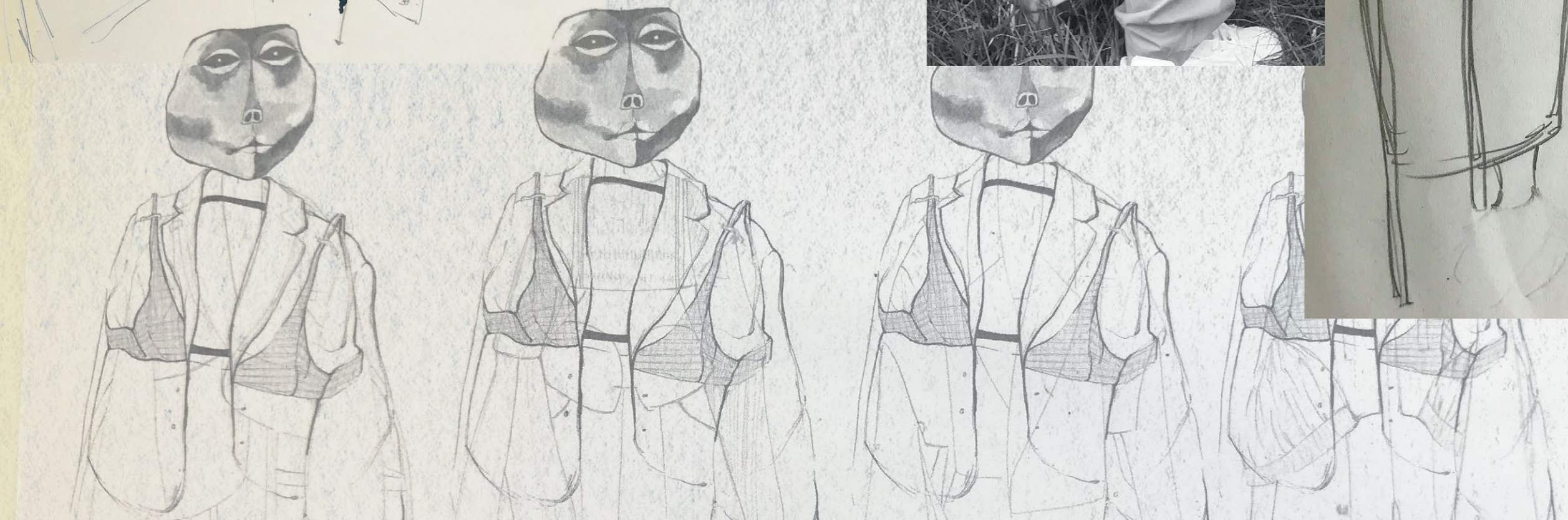
dir
inter
nt
der

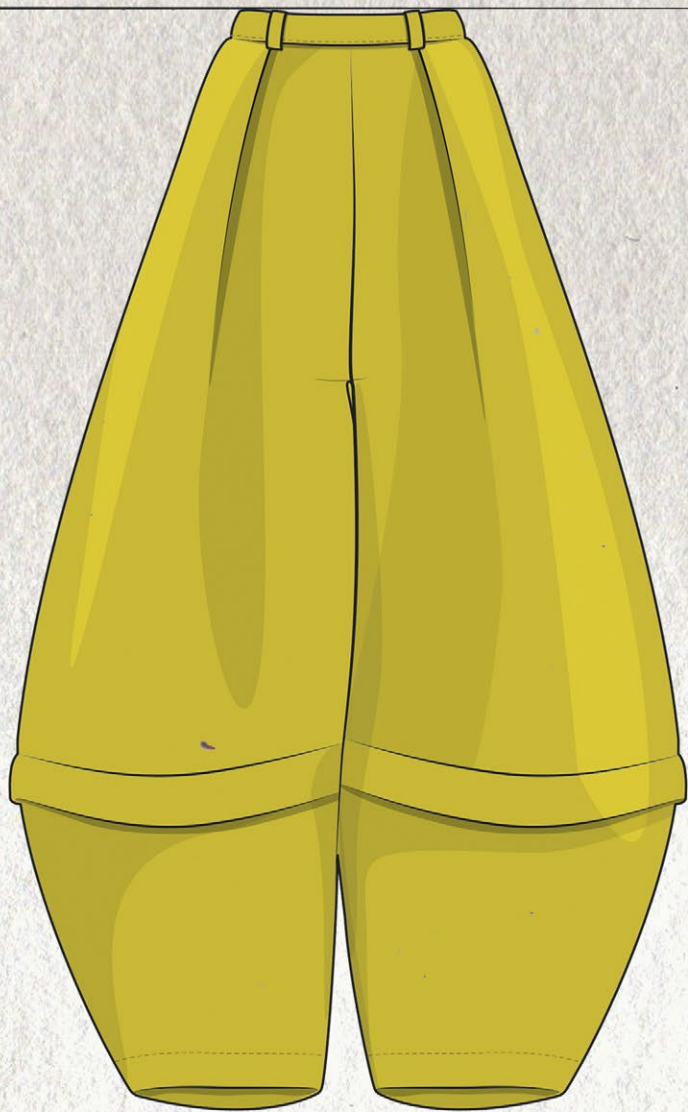
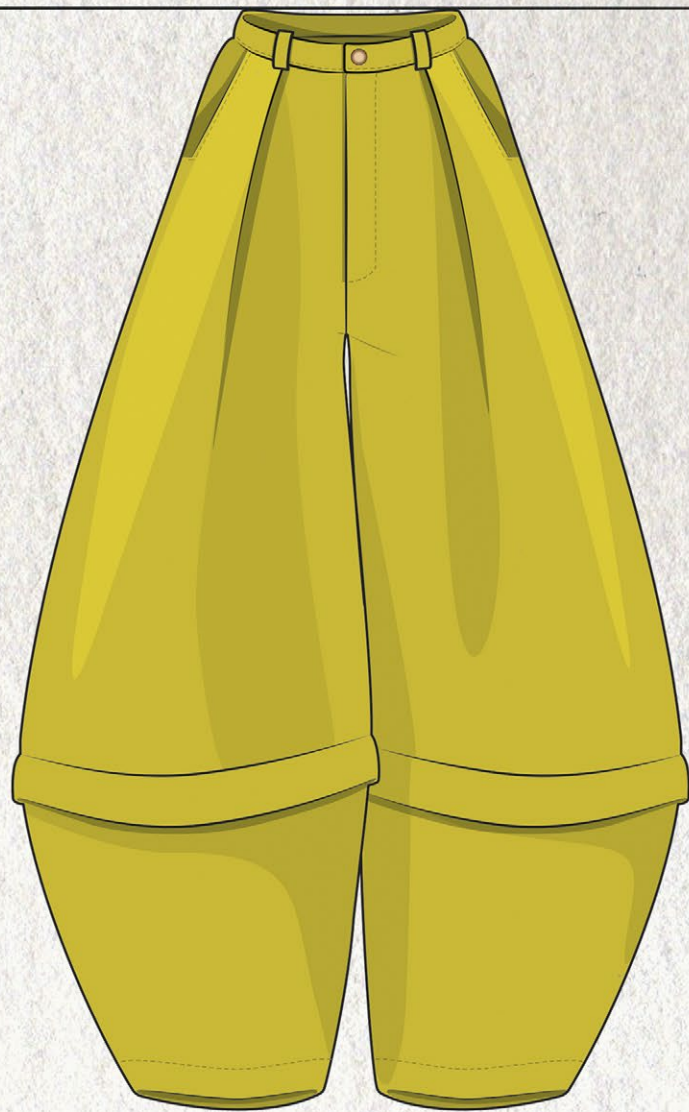
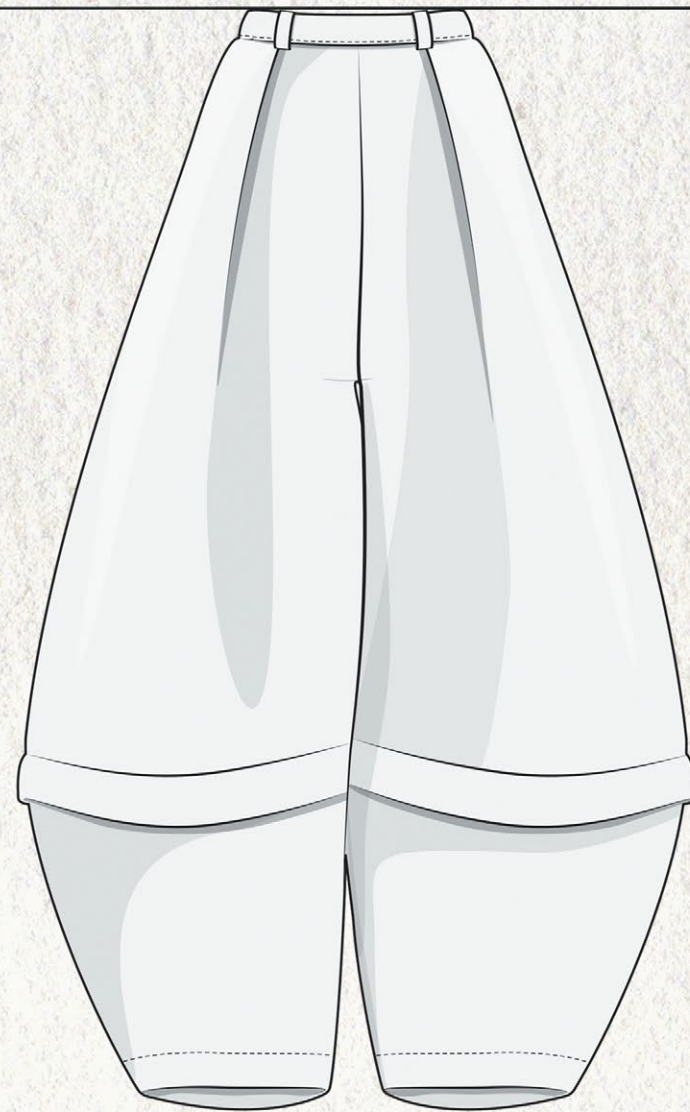
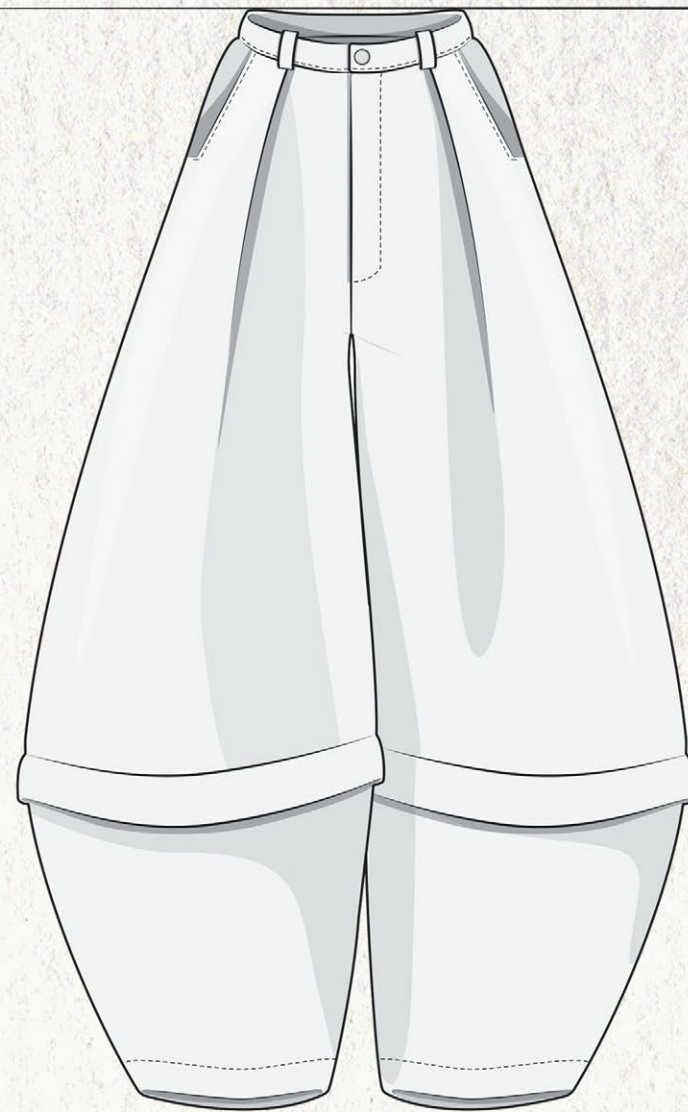
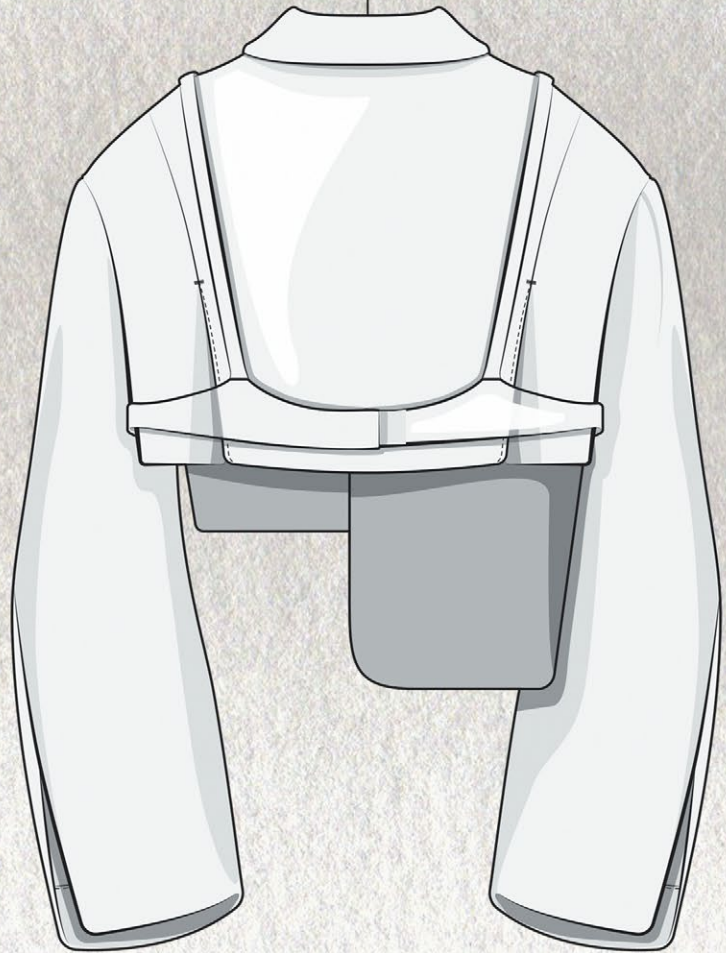
more
dark
more
into CB
denim.

filam part

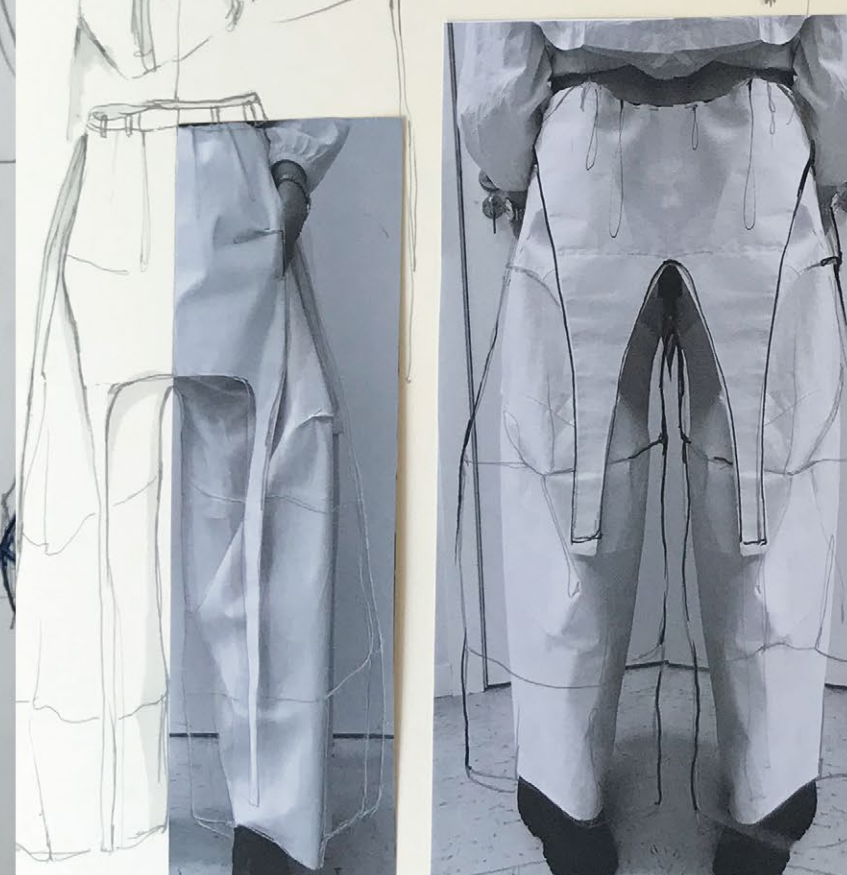
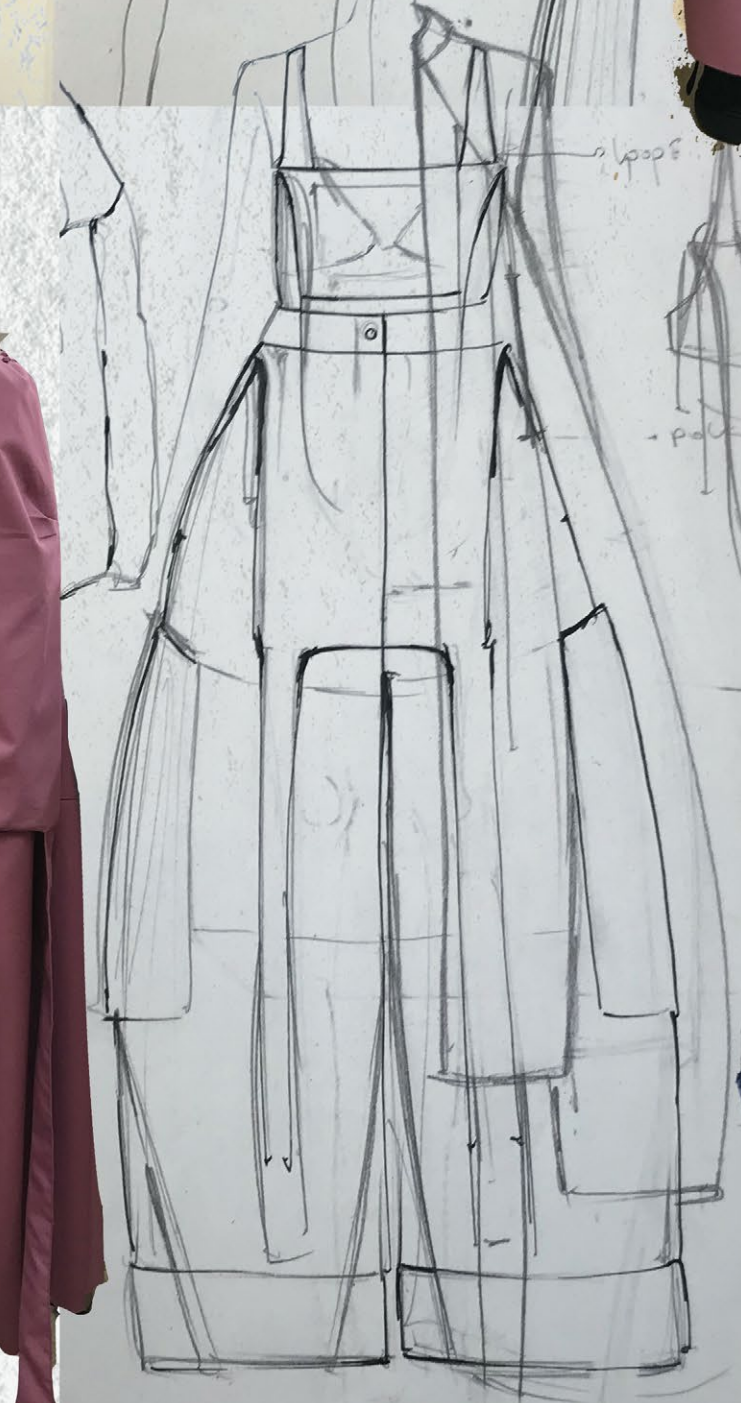


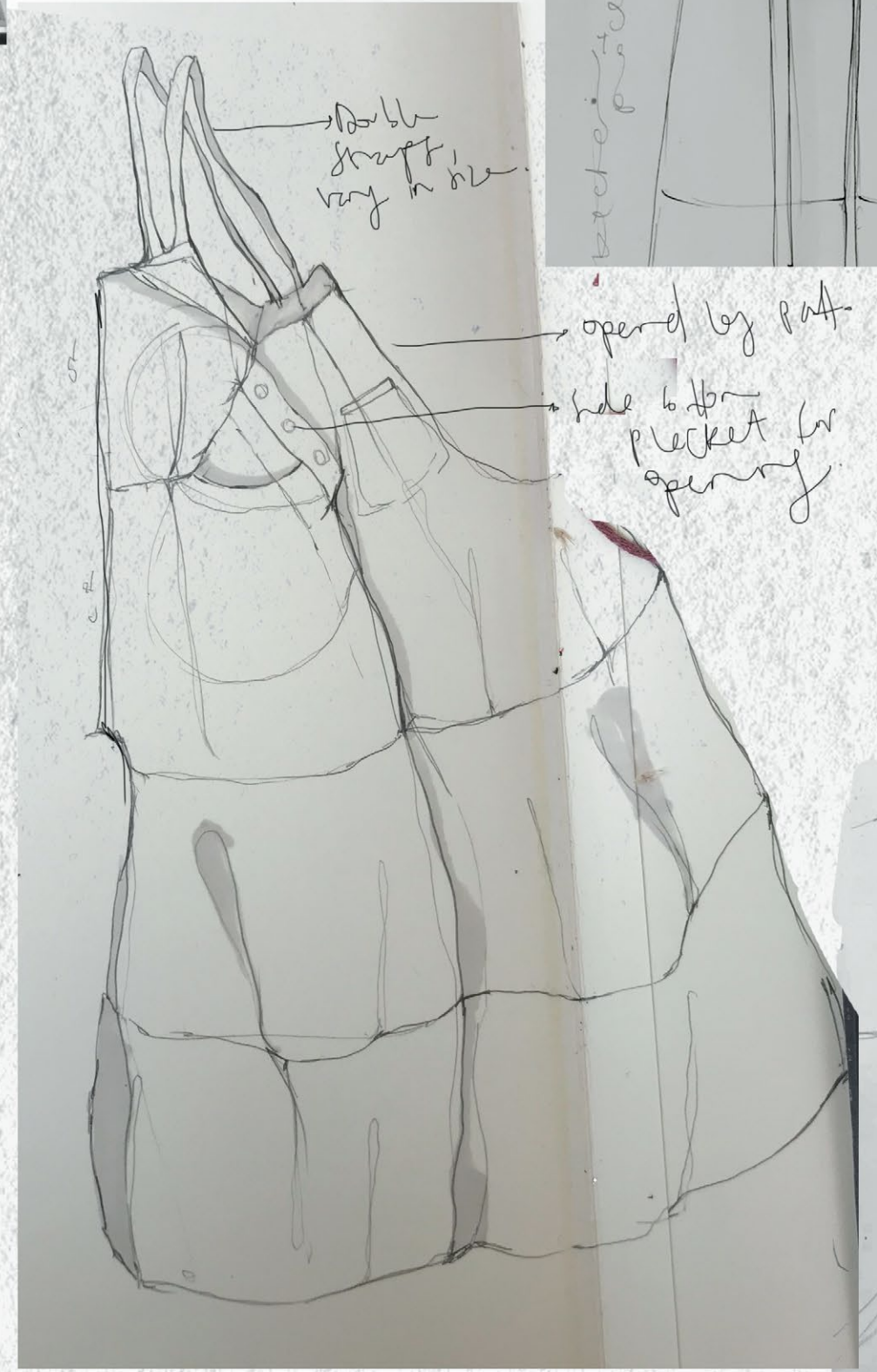
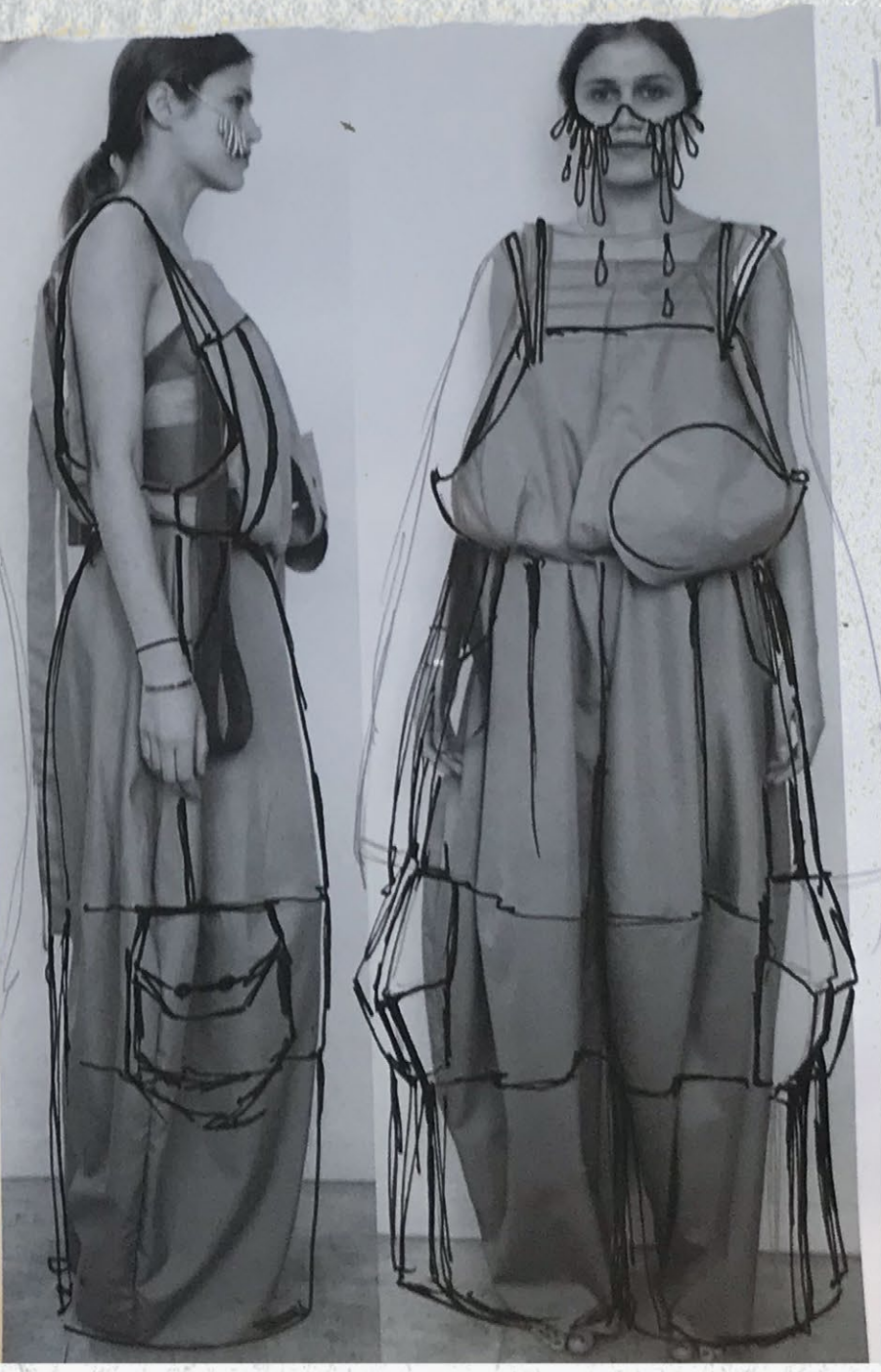
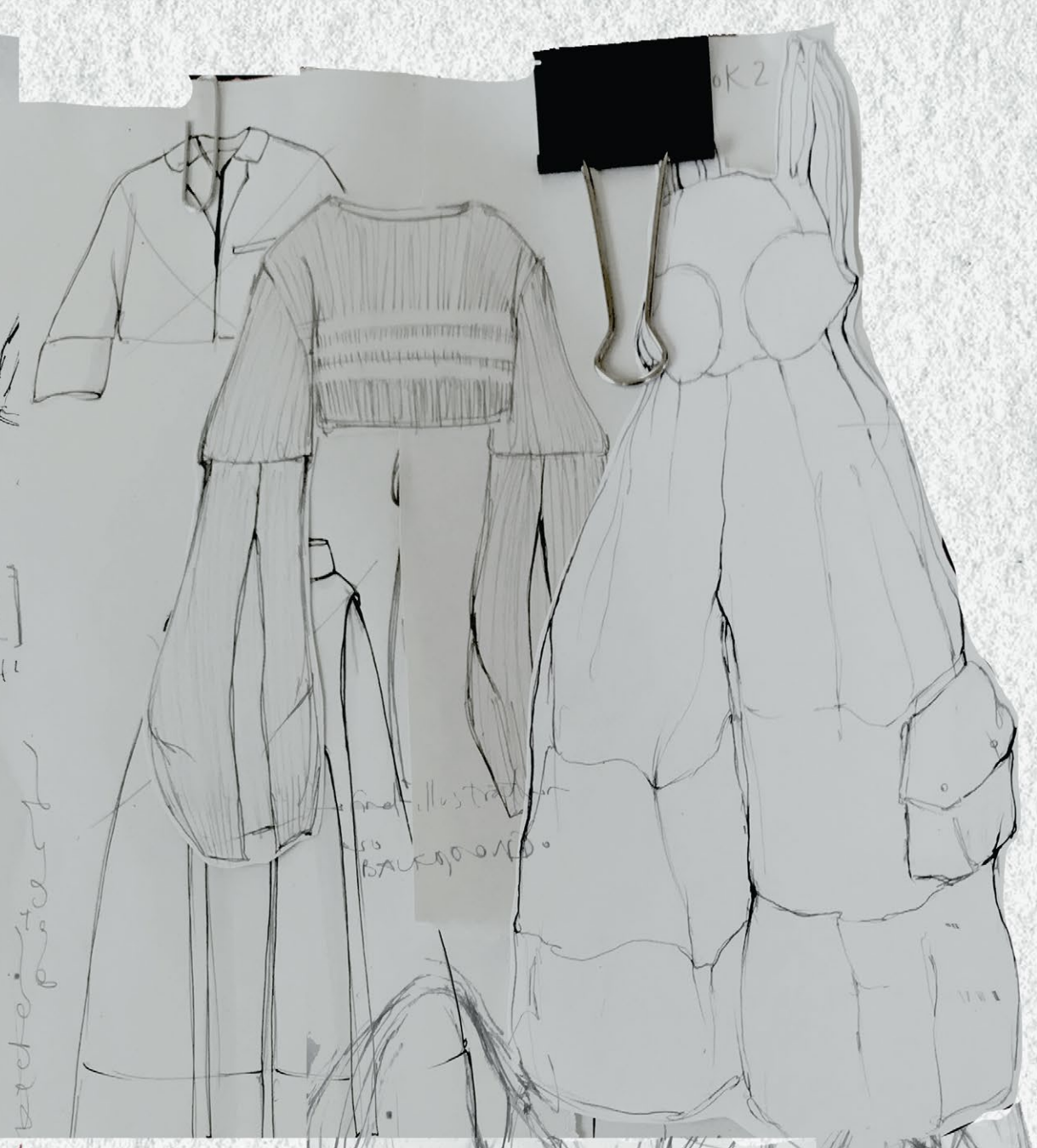
O'NAT









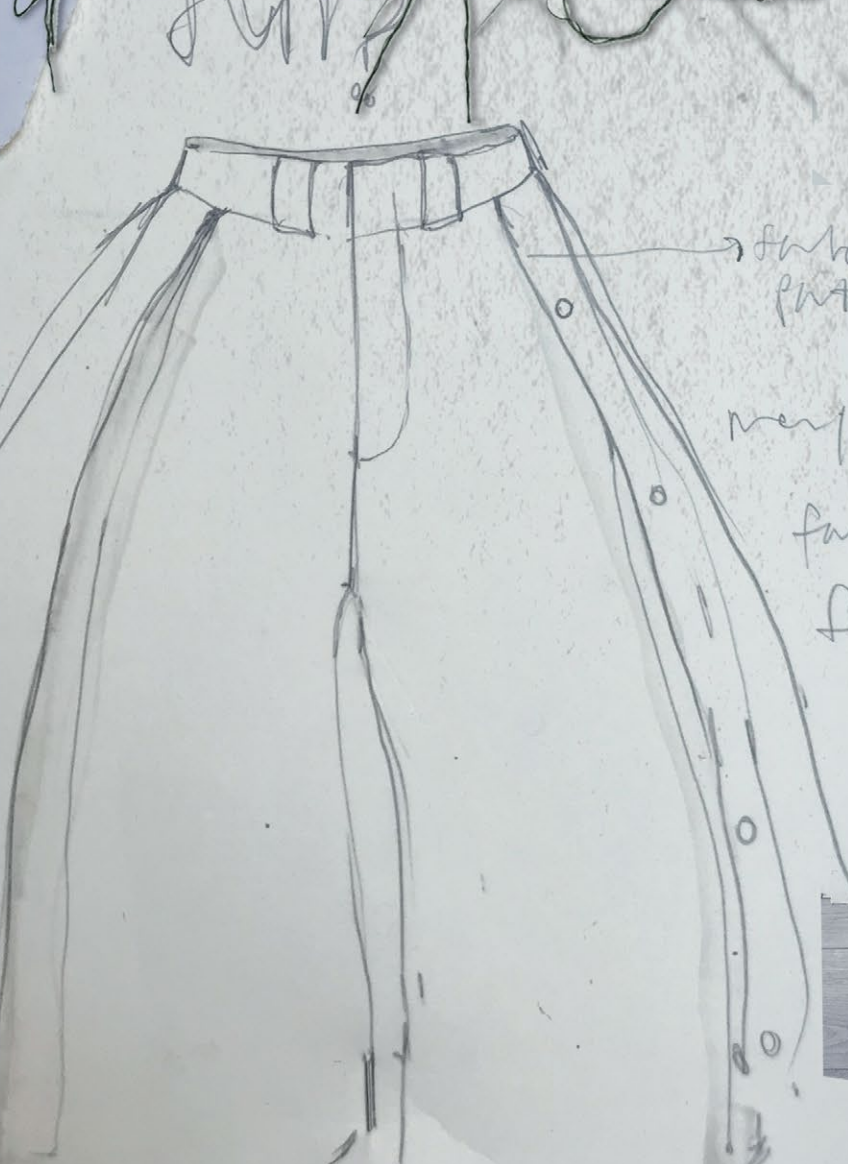


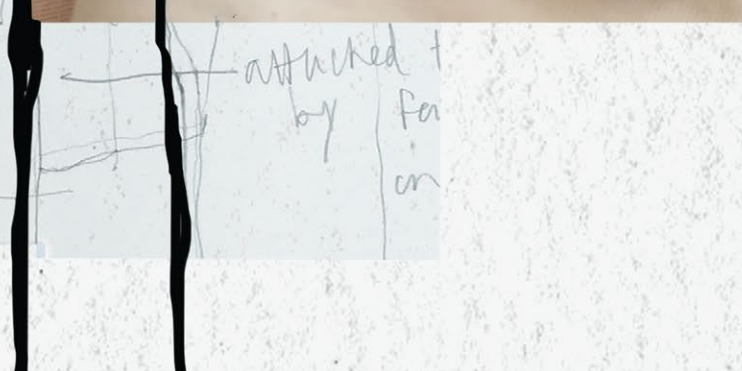
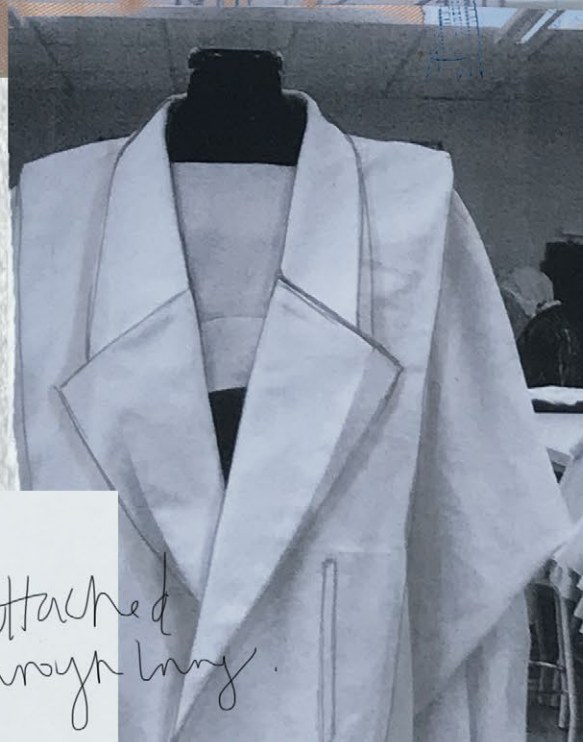
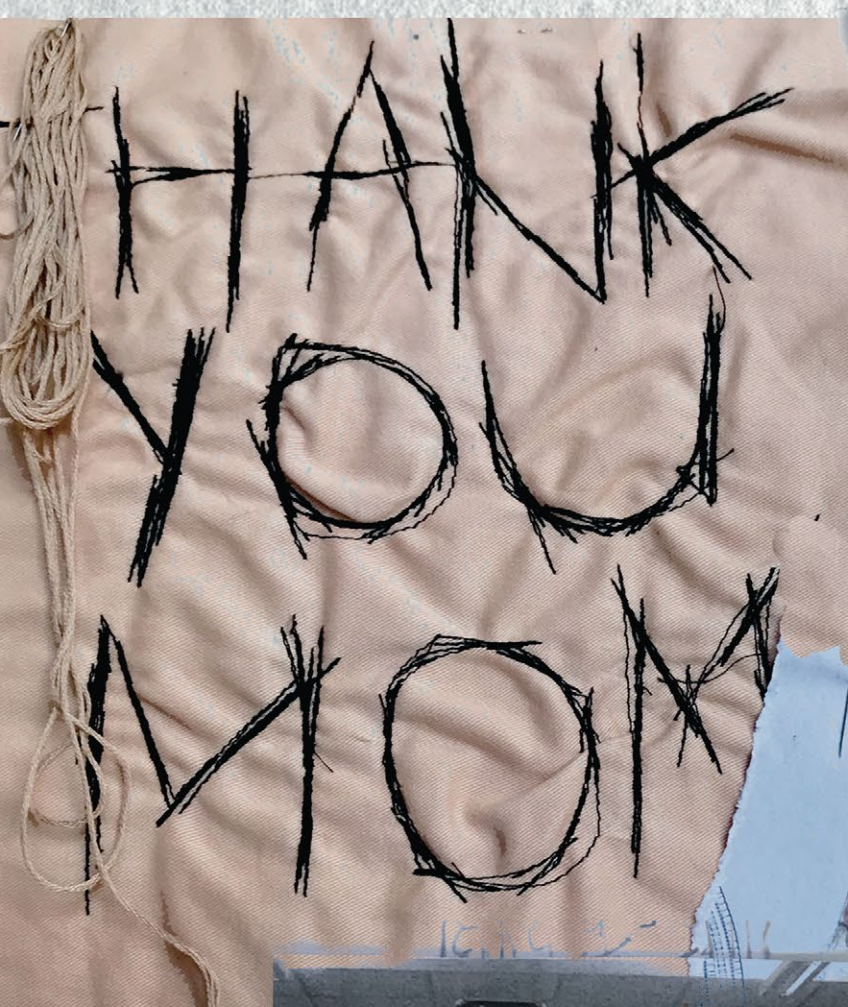
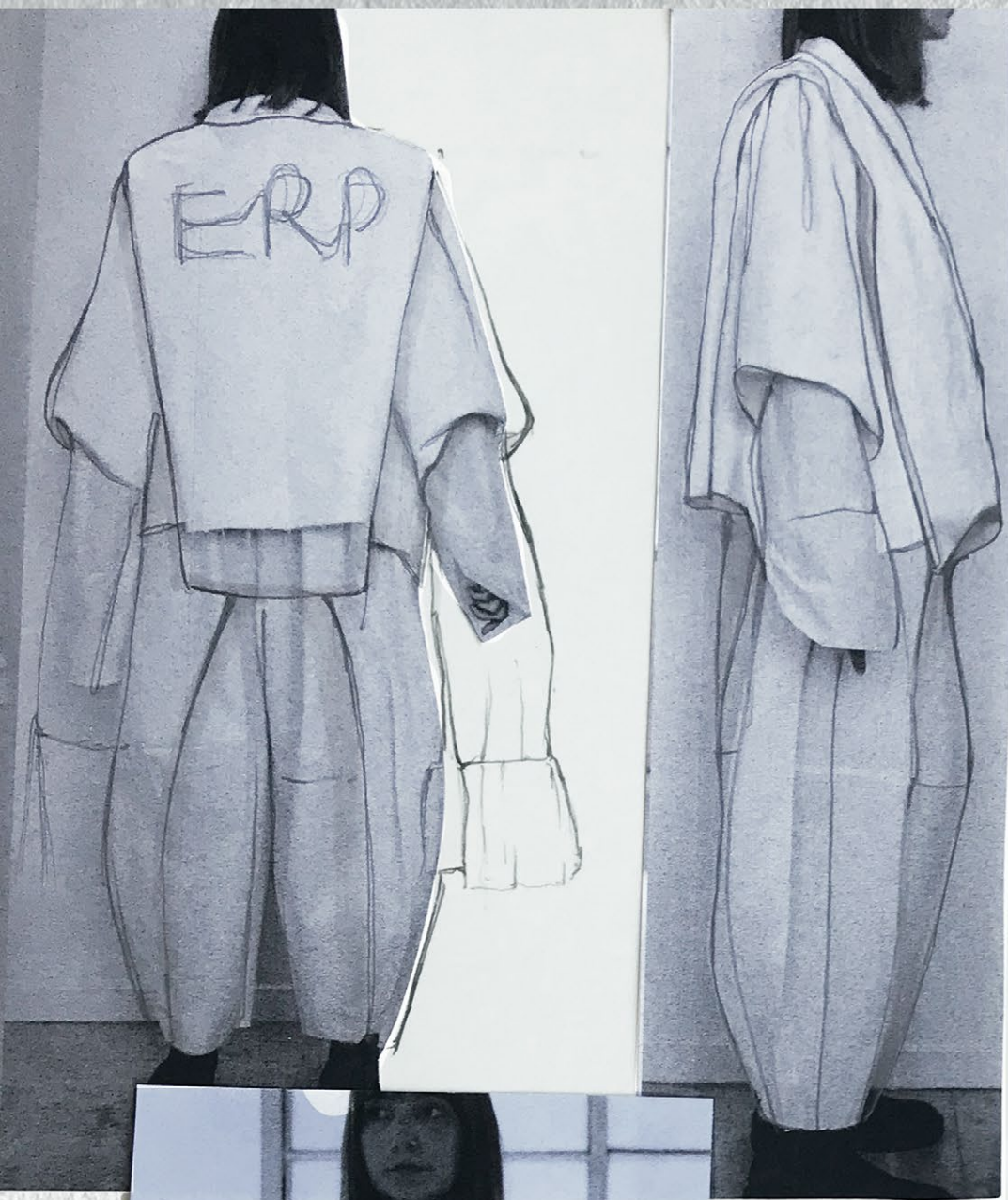




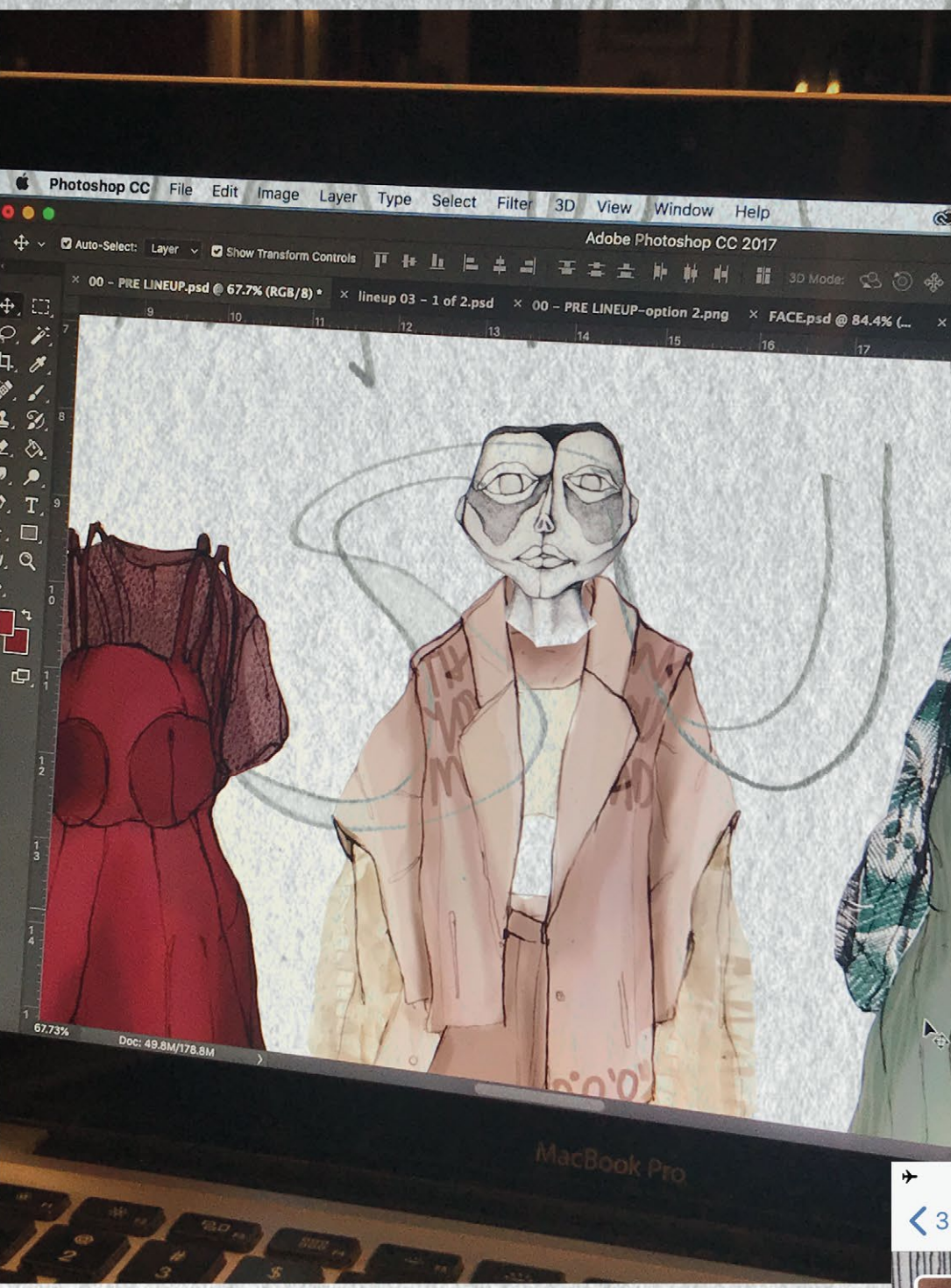








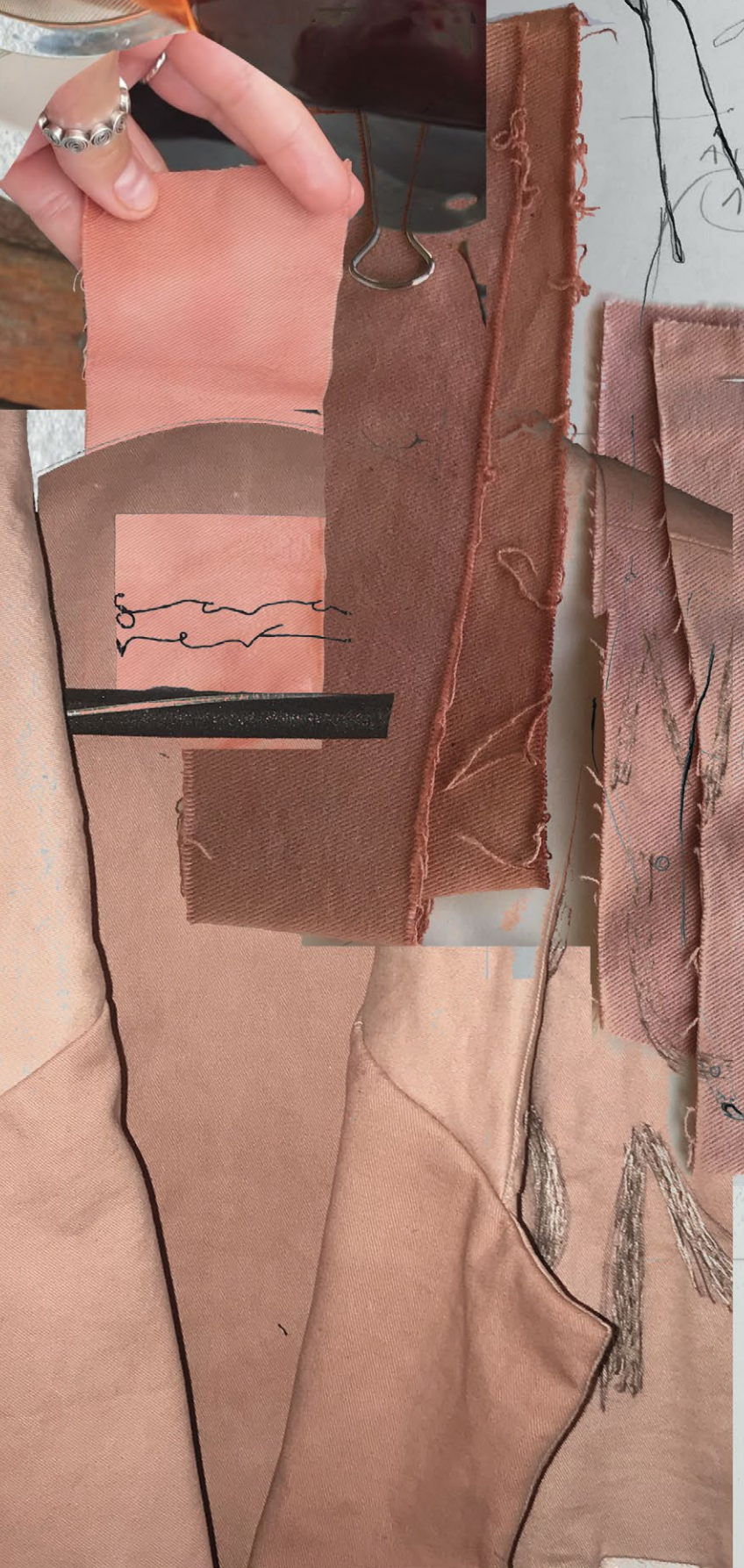
bva
YA
BA

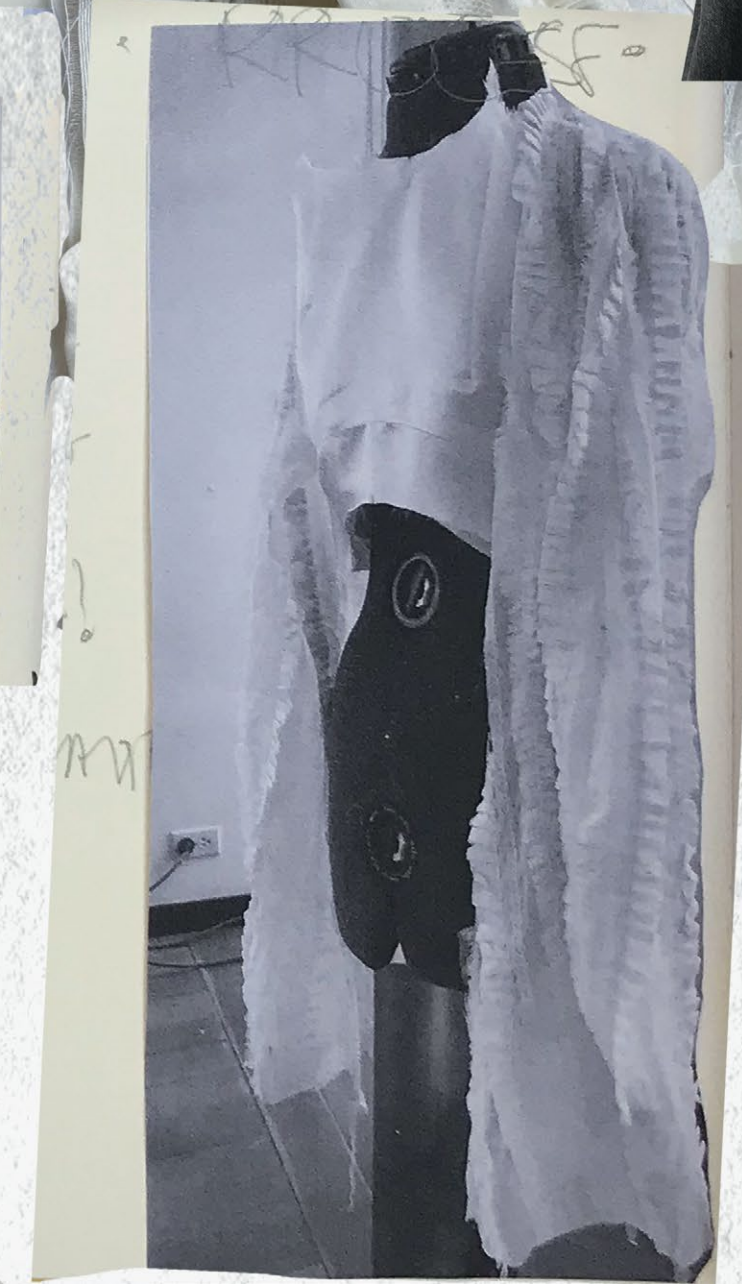
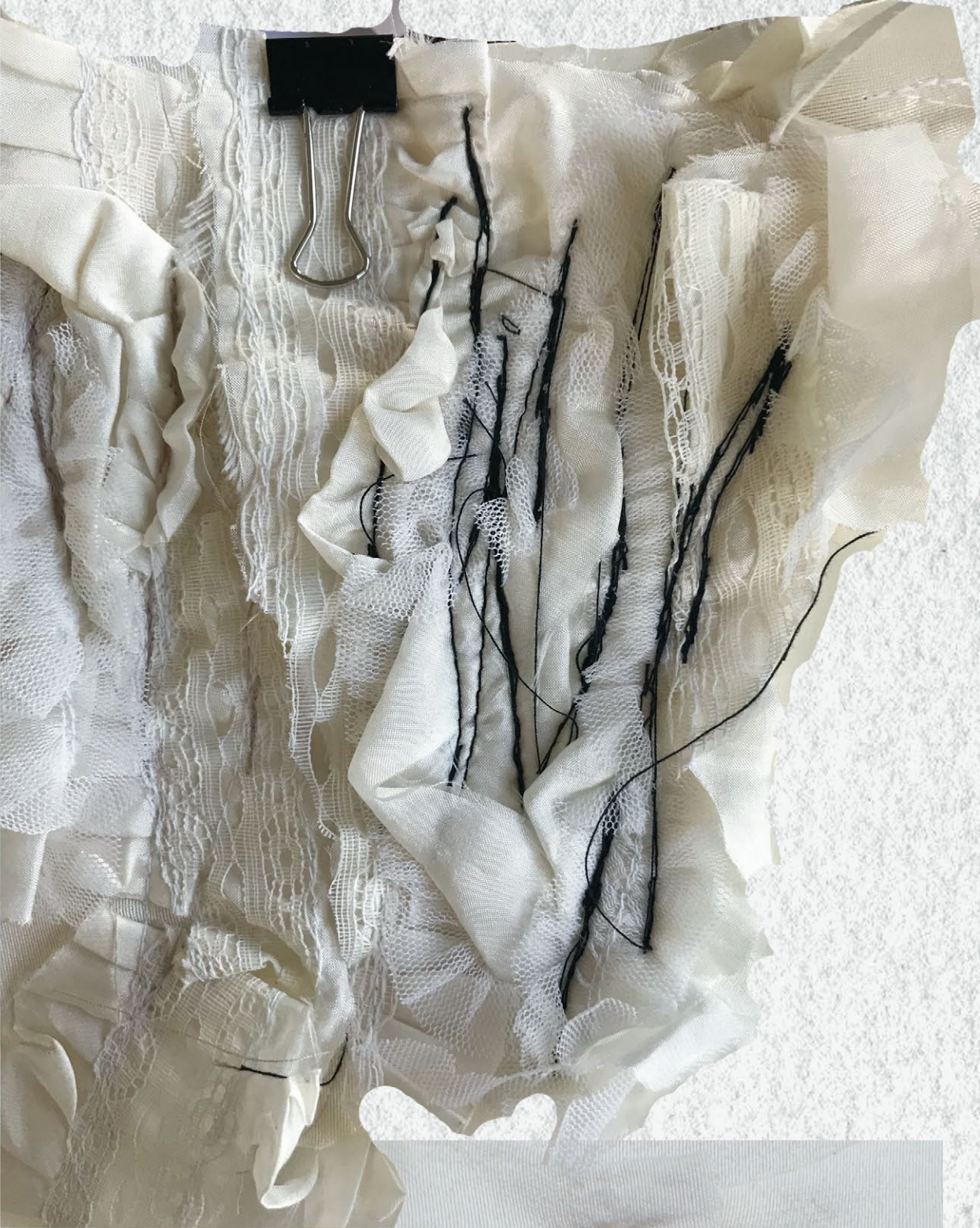
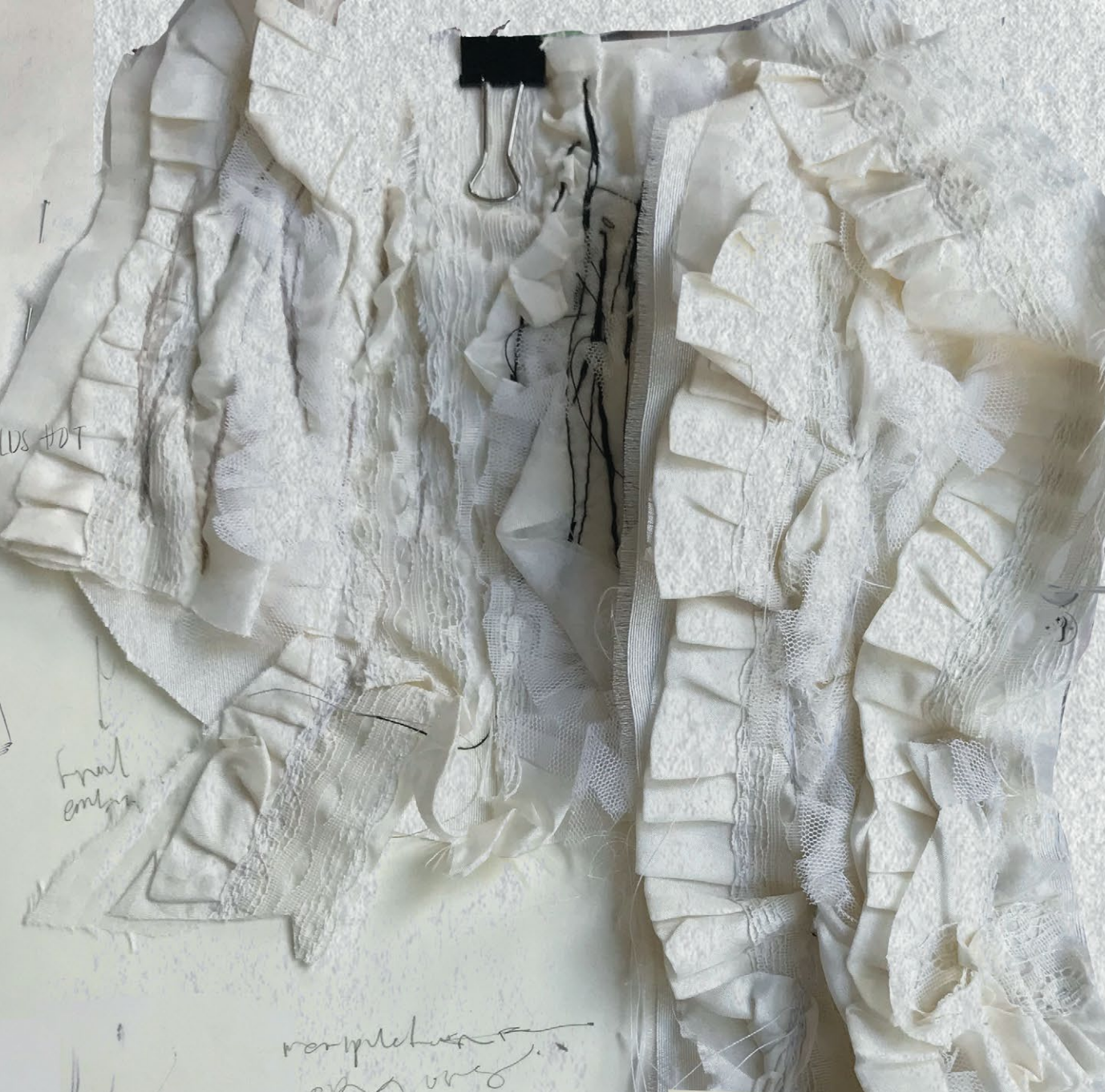


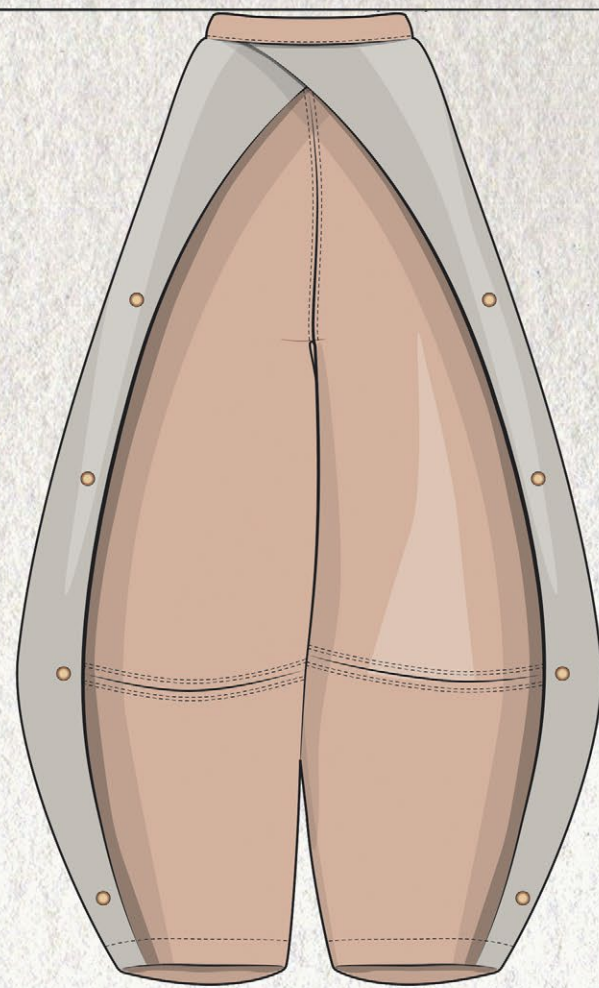
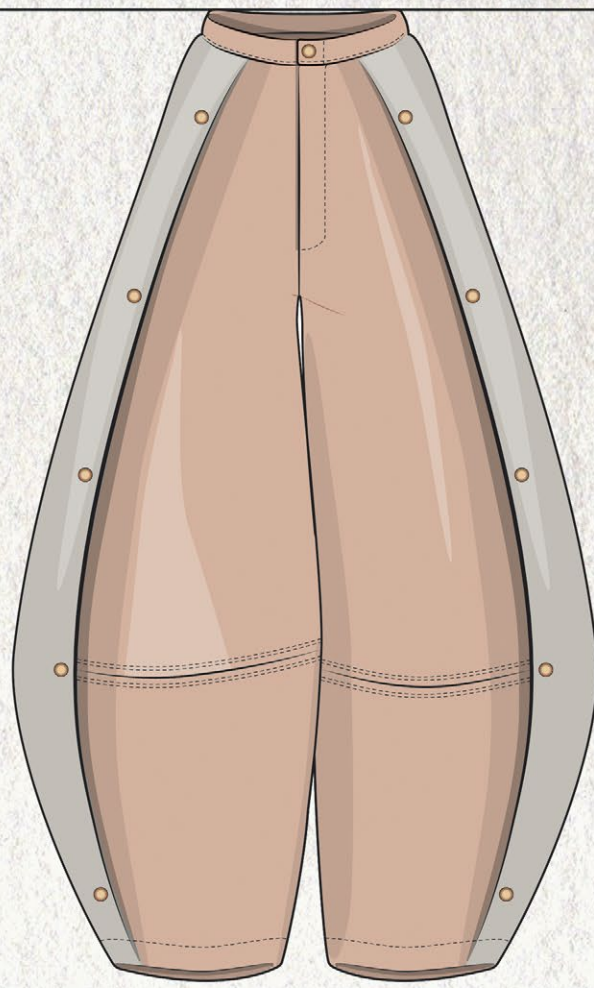
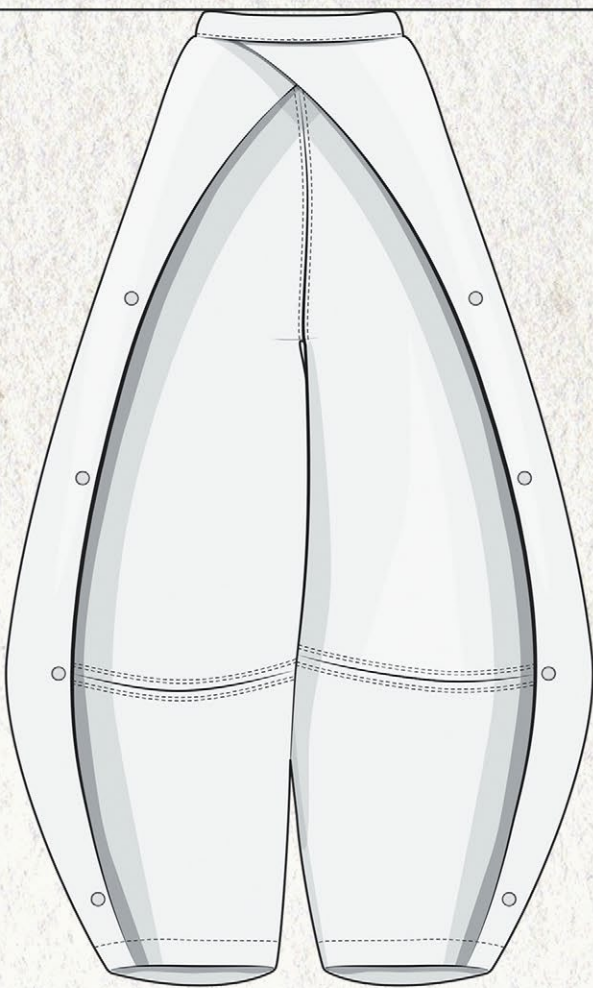
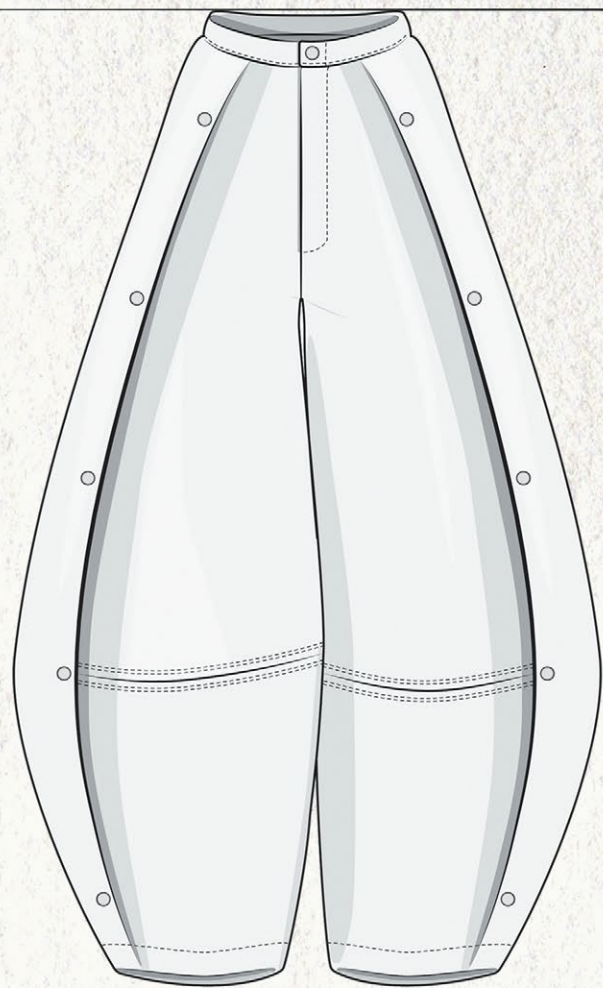
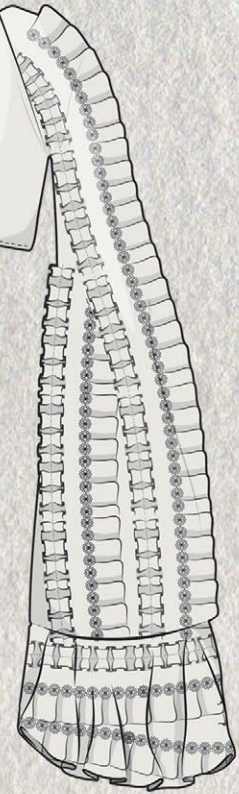
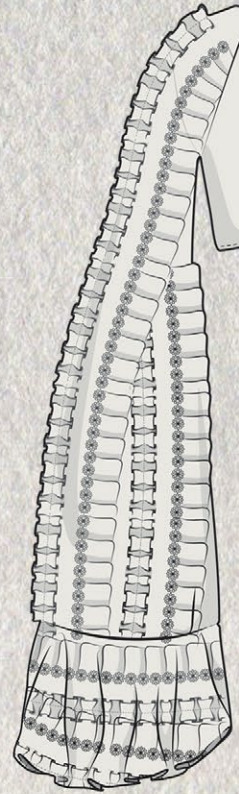
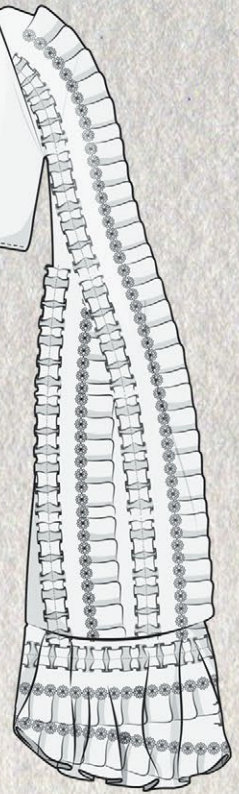
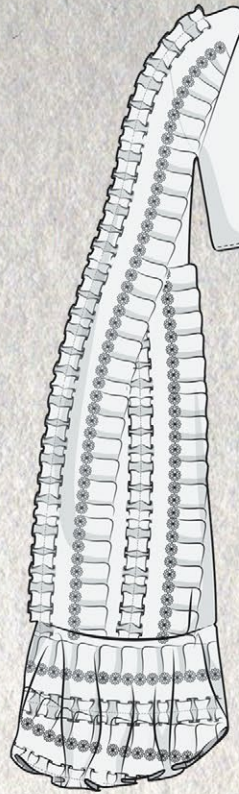
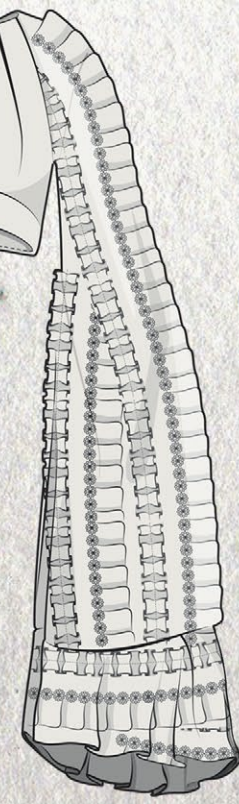
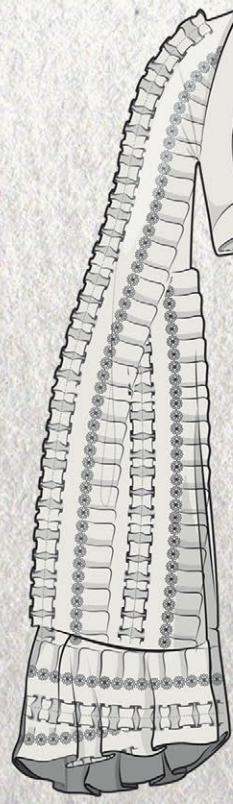
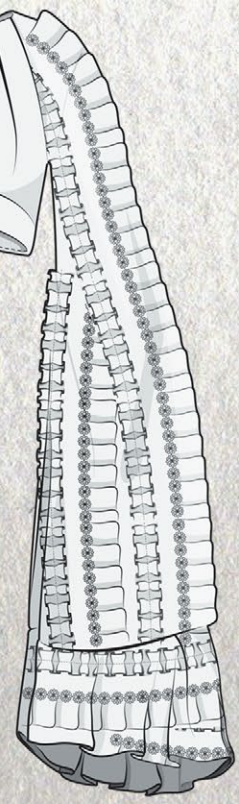
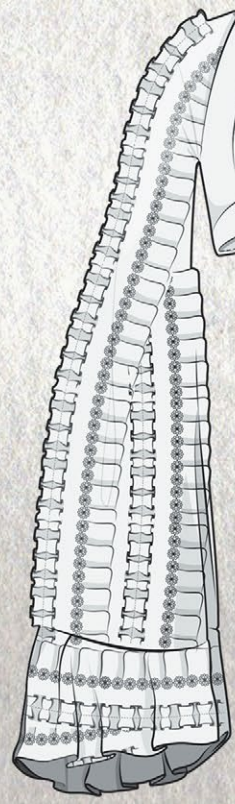
THANK YOU



GNAYABA SUIT.

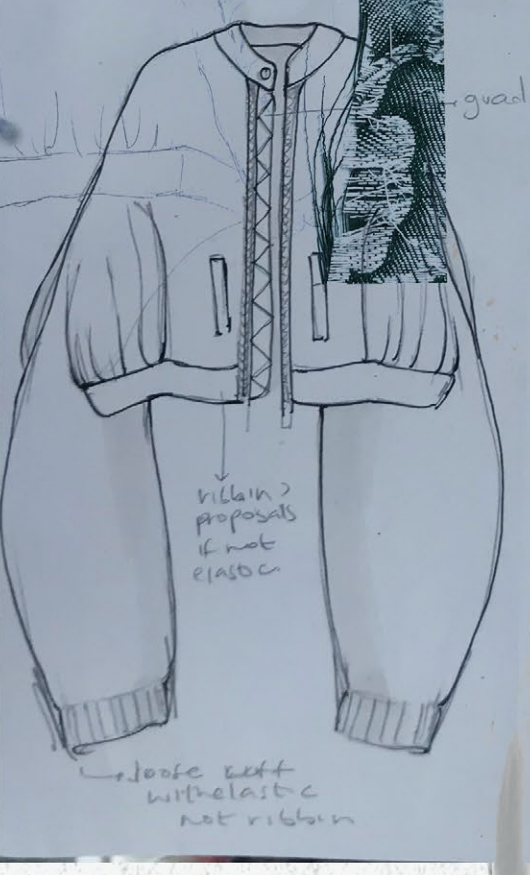




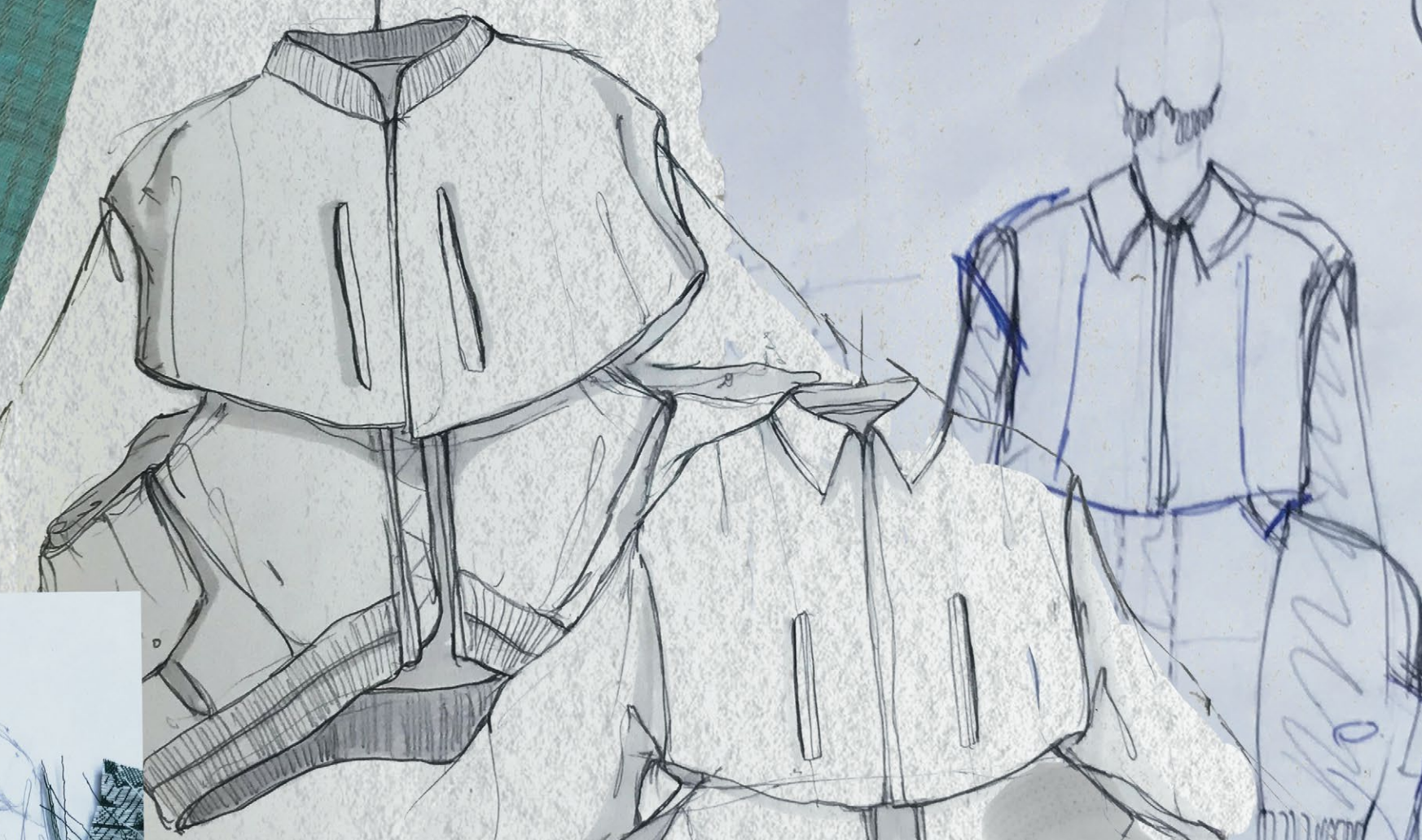






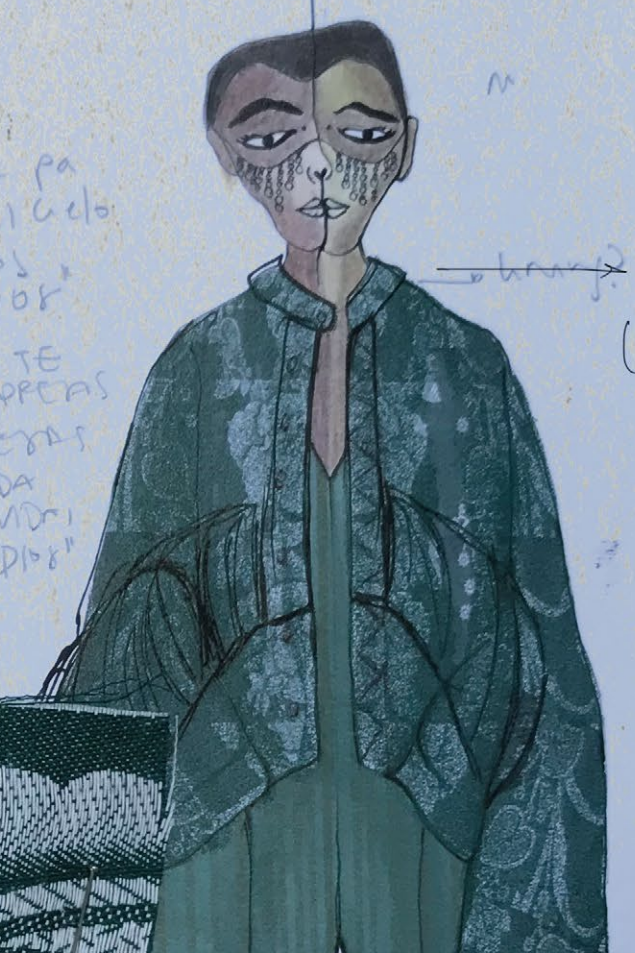


oversized
spaced
Bo mber.



first
gather
for waist
✱





intuye
cotton
frayado



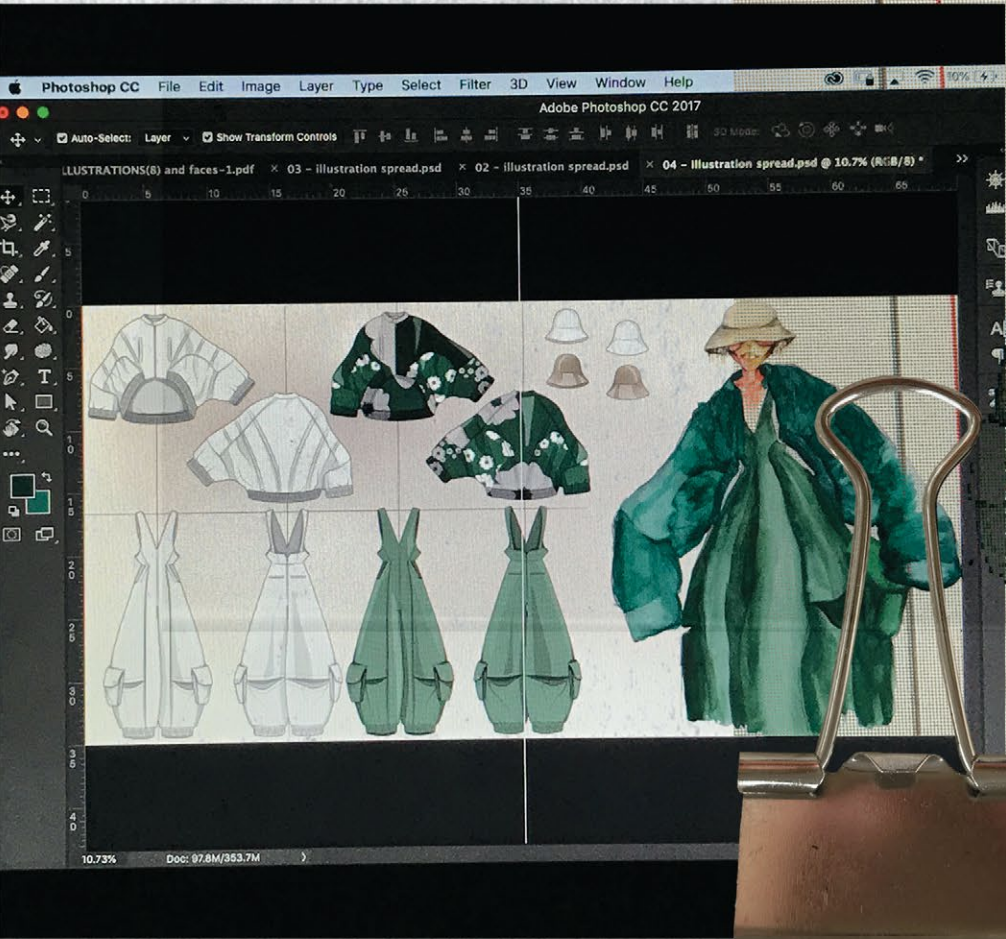
0.1 - 2/2



HATO
JUMPSUIT



no background
for full lvt
black color
Bee
inspired



FABRIC A
REFERENCE

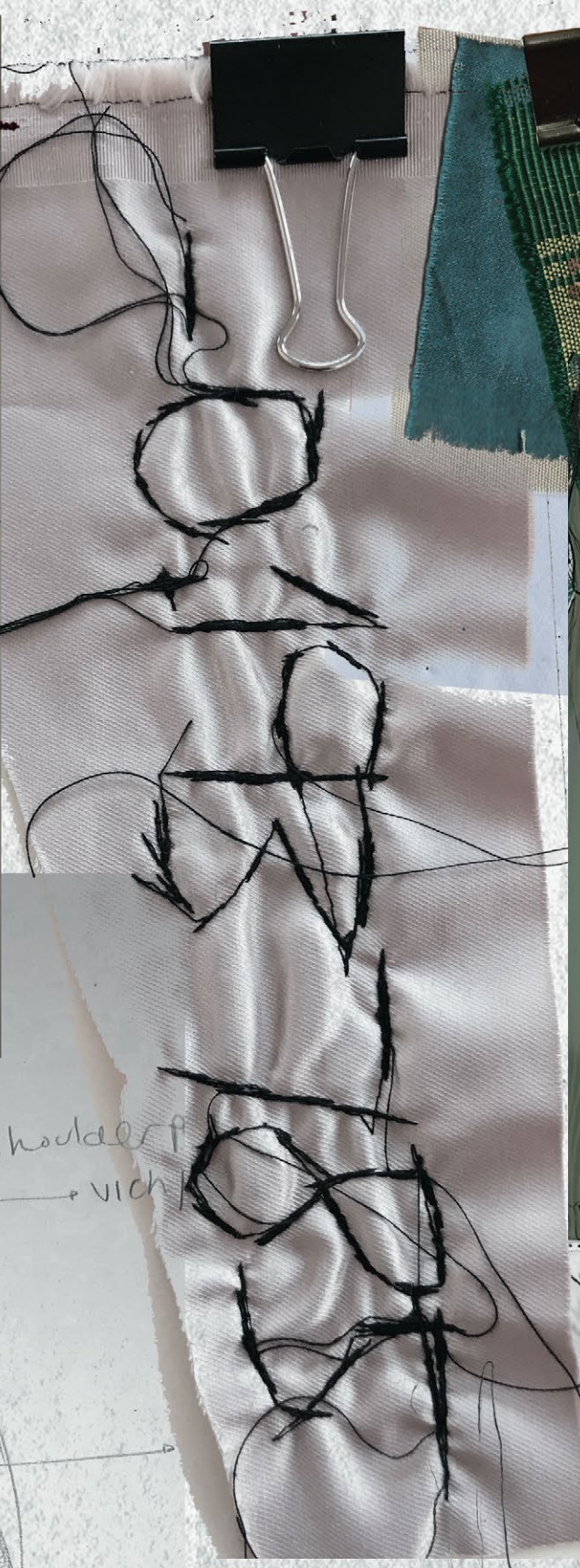
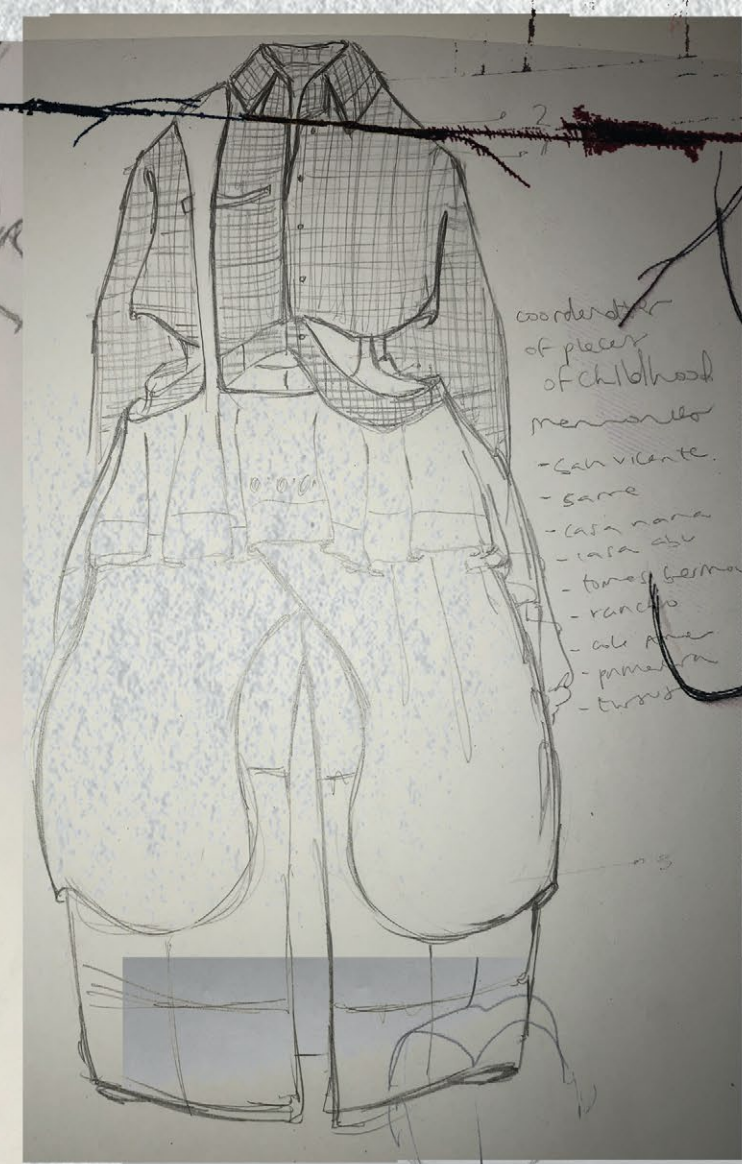
FABRIC
REFERENCE



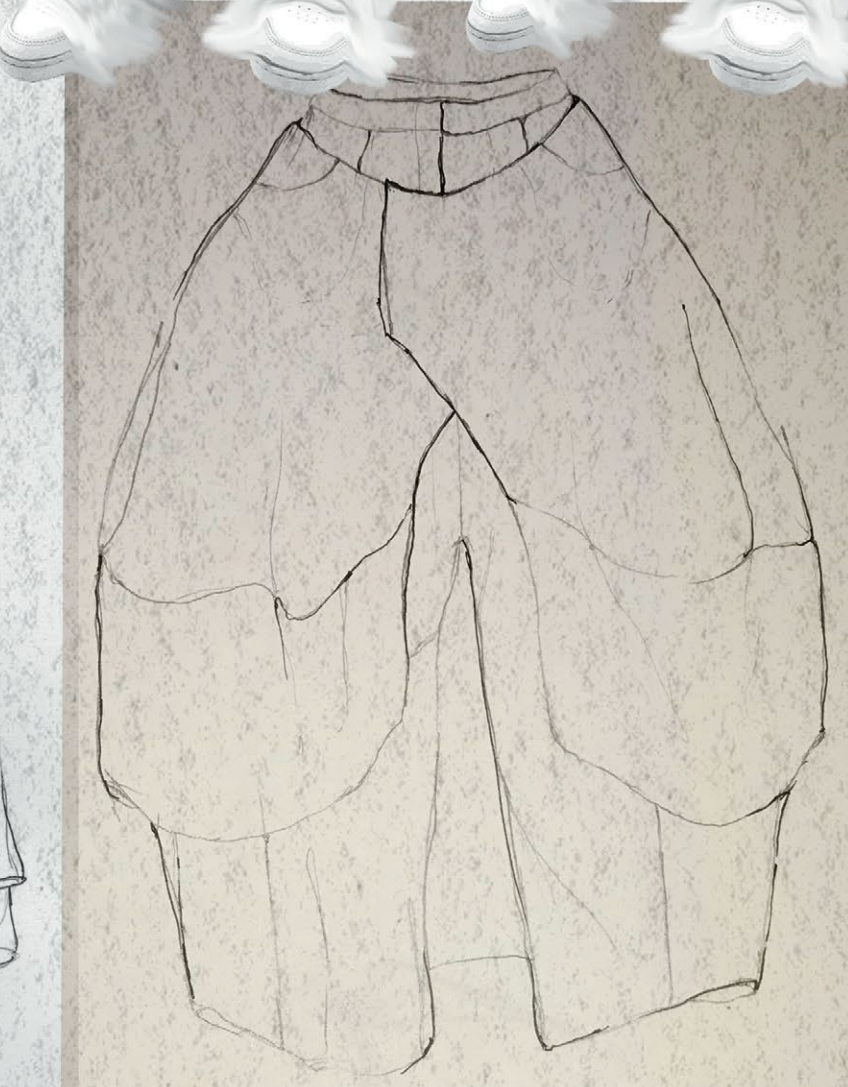
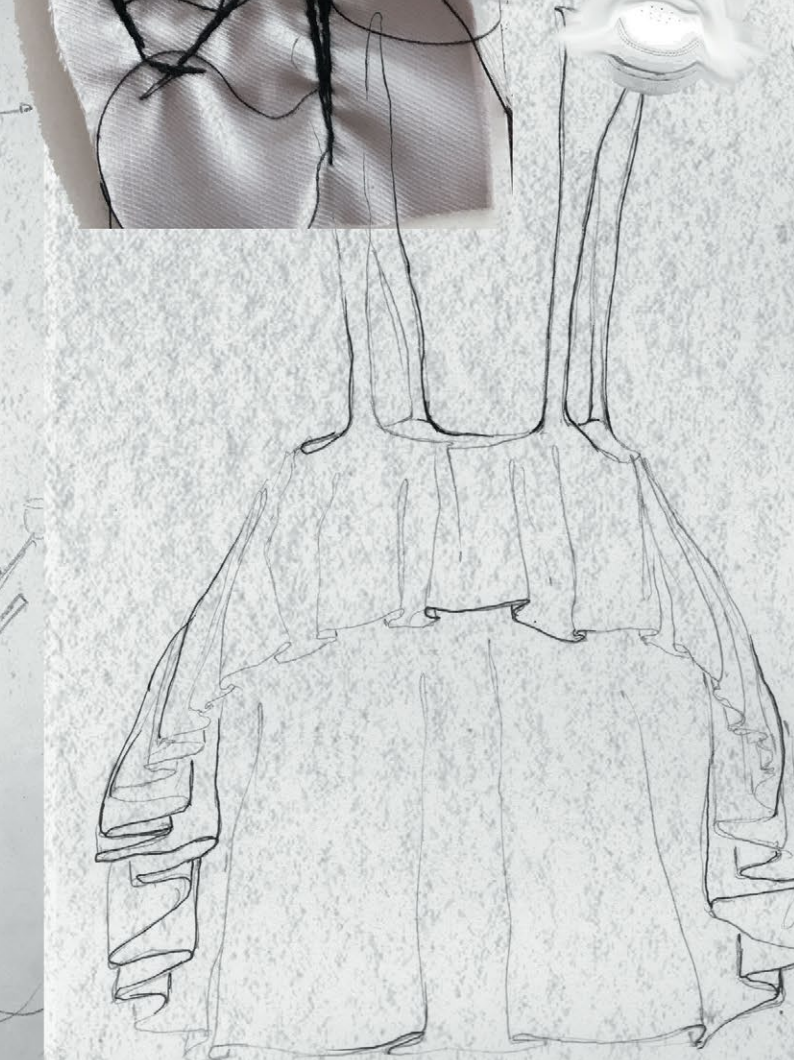
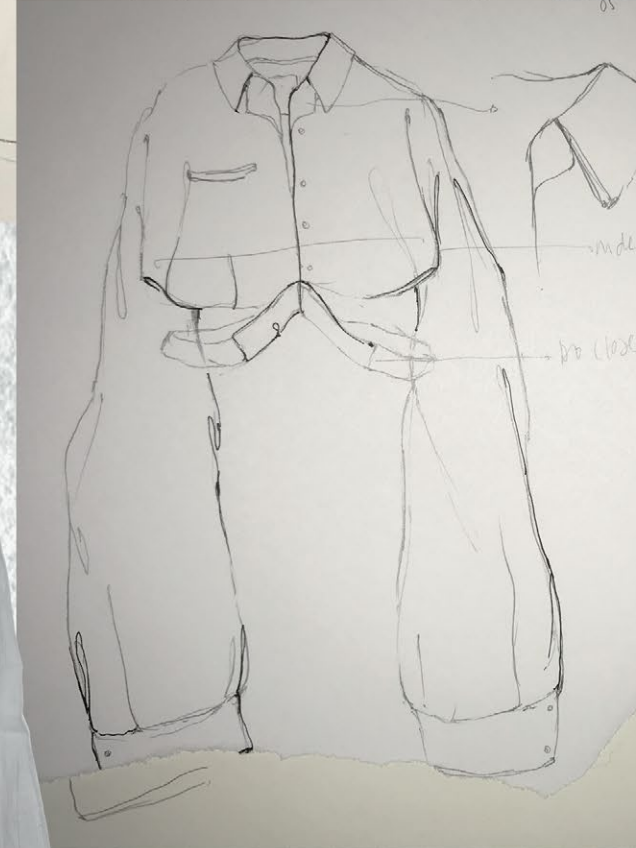






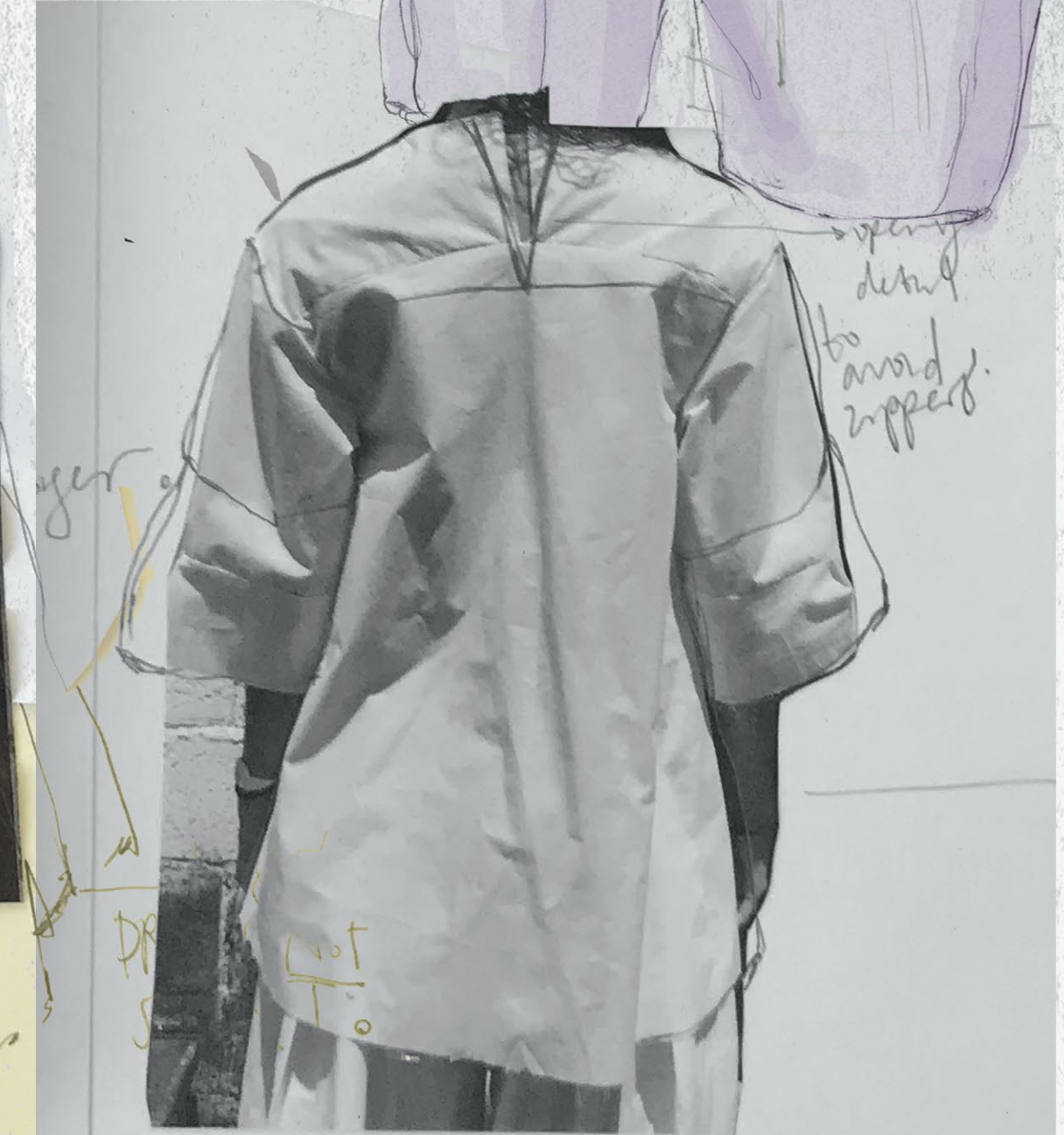
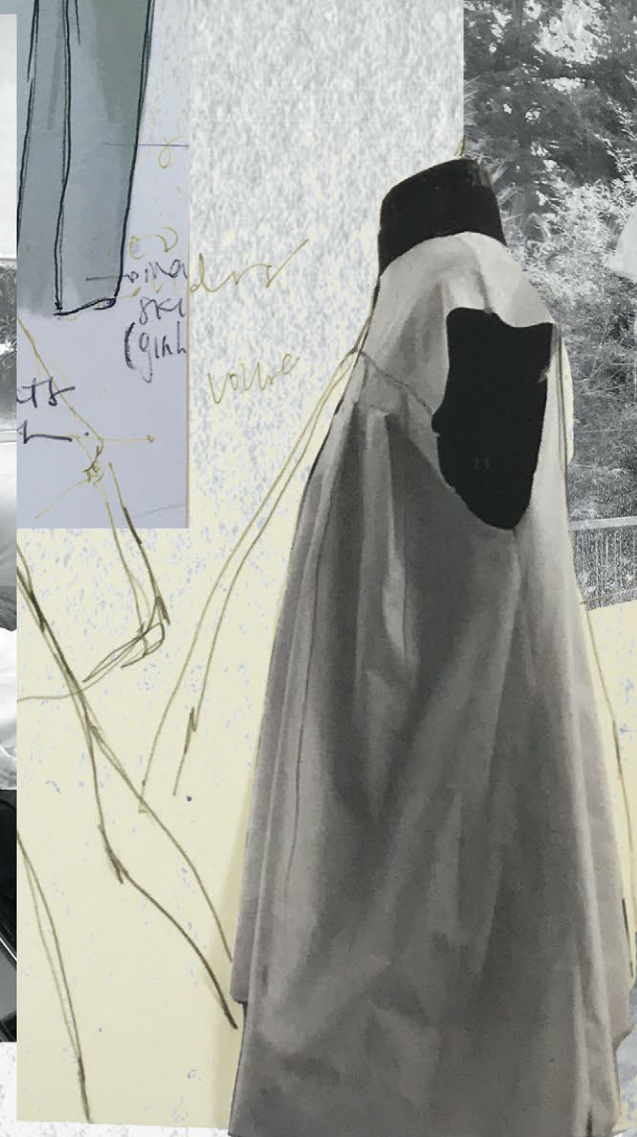


not
Kamaria
Browe



should be tighter
longer





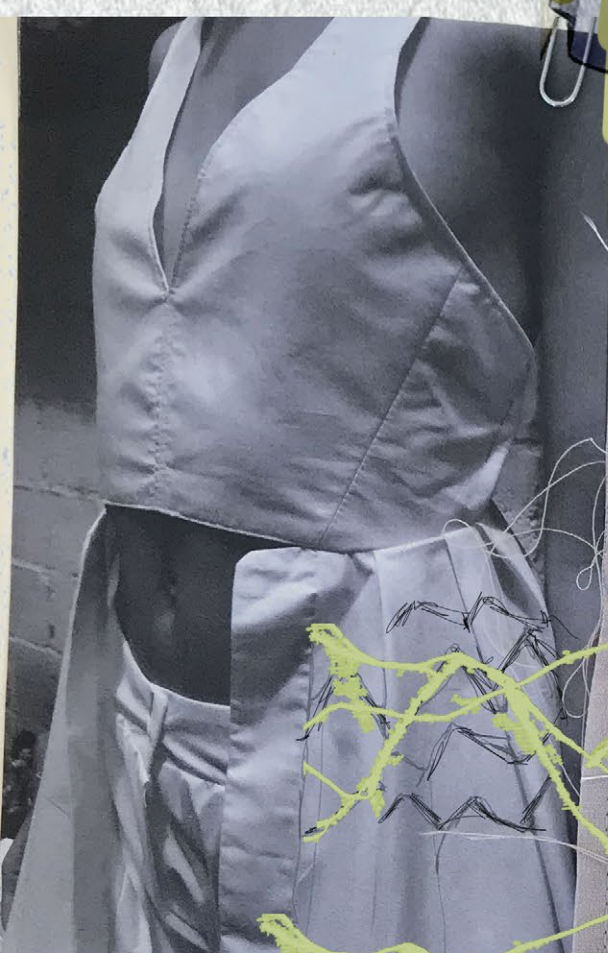
opening detail to avoid zipper.

finger

DR

front

Layer of
triple
panels



regular button?
translucent?

married, long

0'0'0'

already

OLAT.

5

two under
to control

green
full



shorter
(three
measurement)

needs to
be
lighter



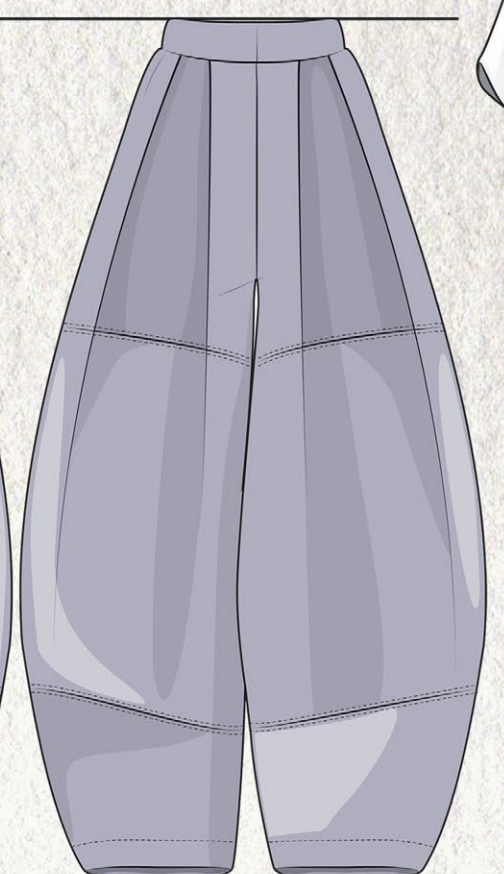
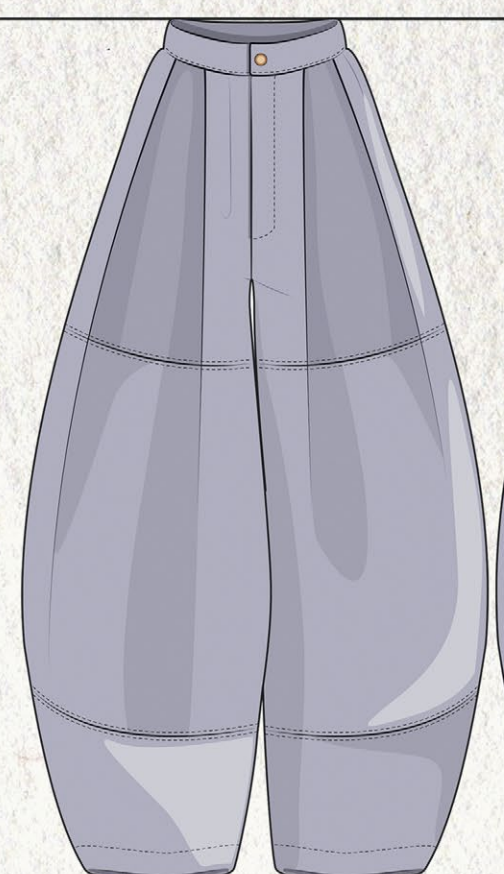
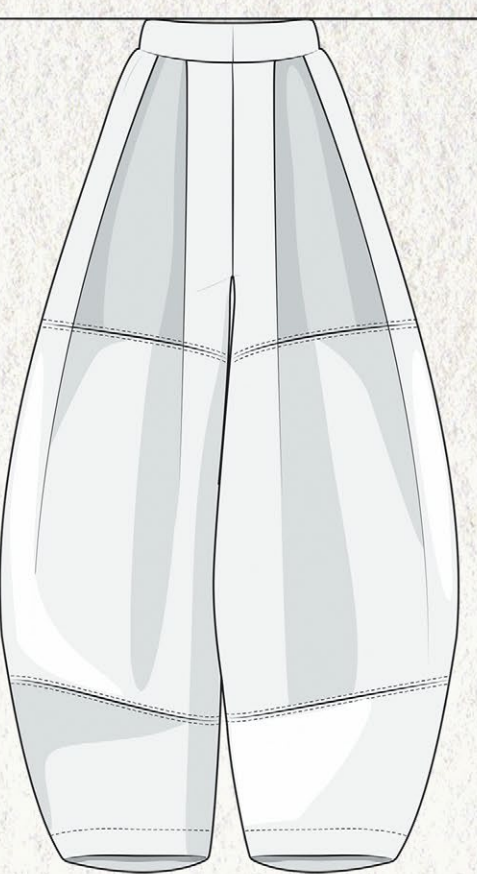
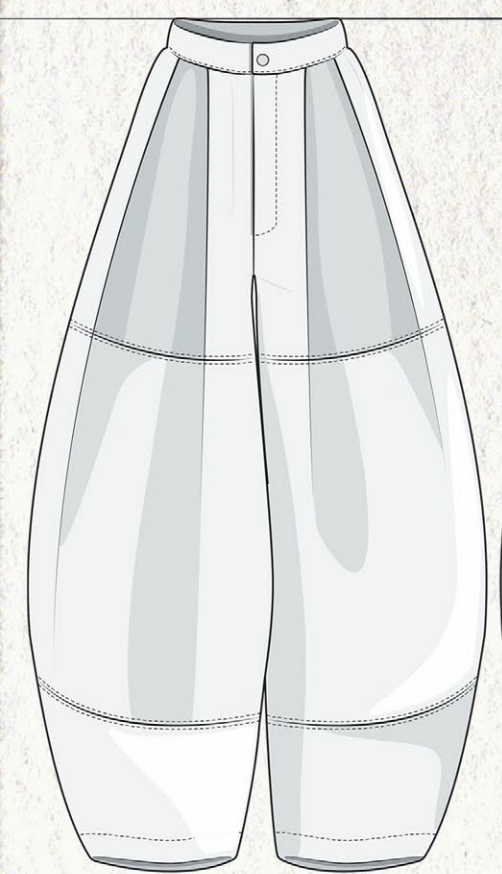
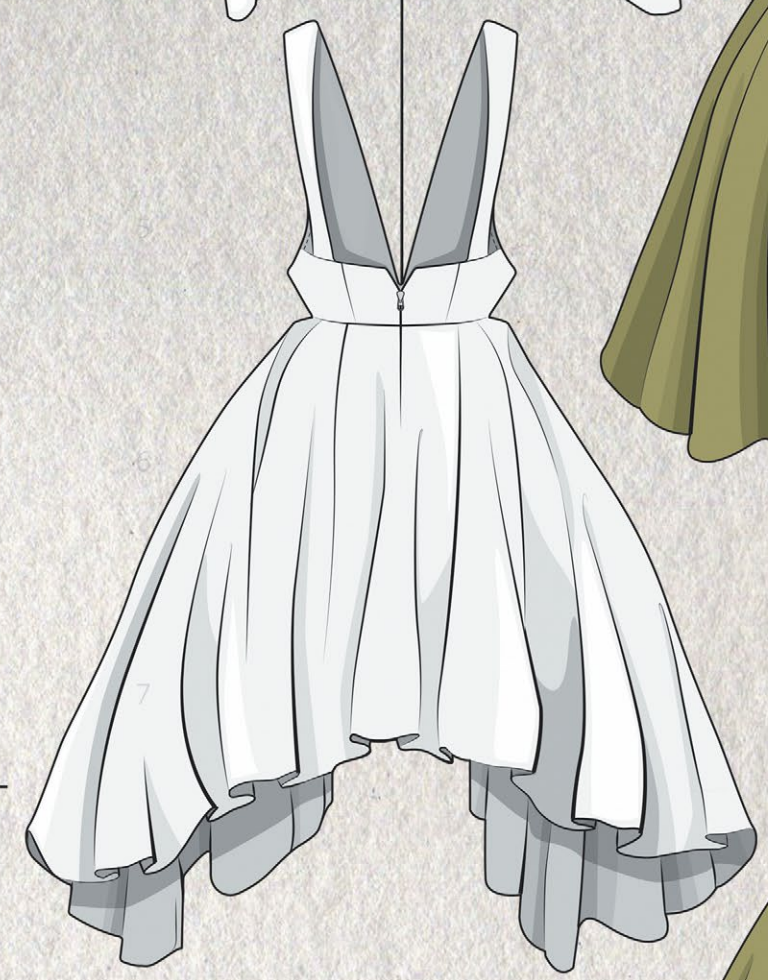
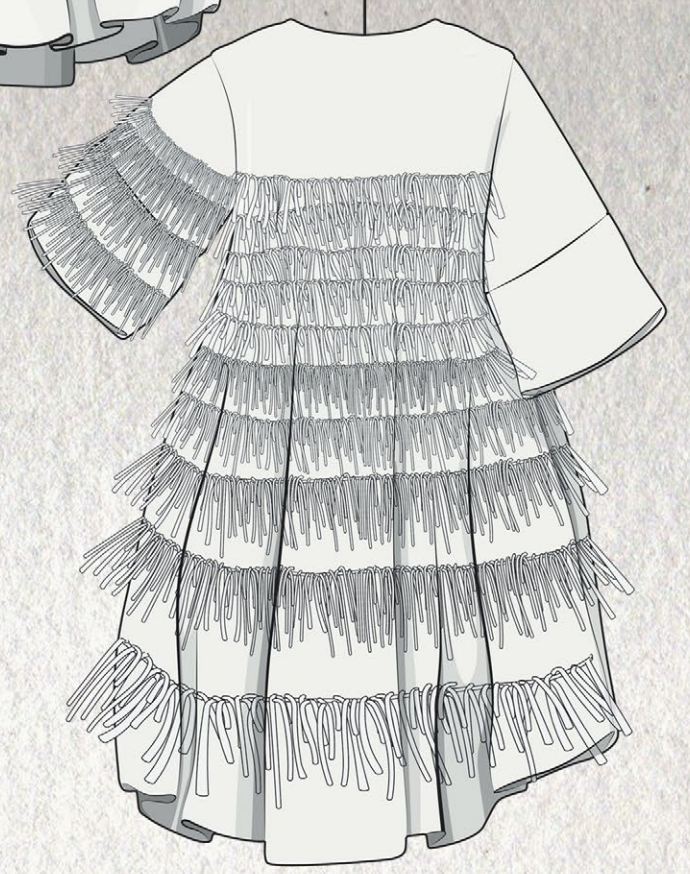
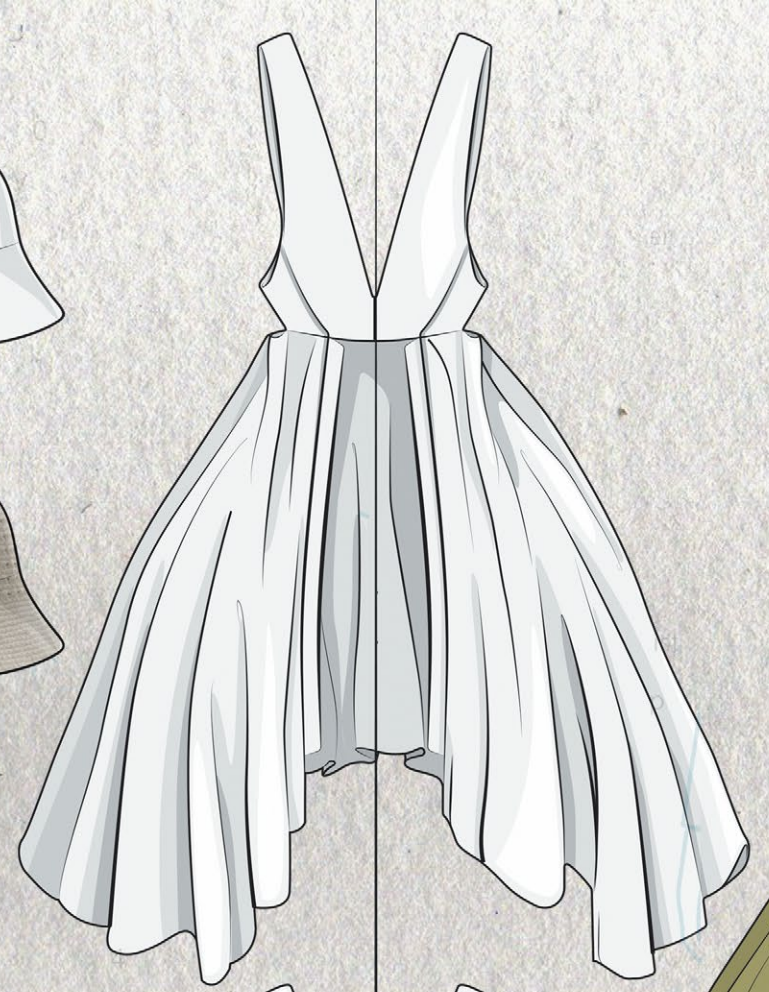
tighter,
fitted to
waist

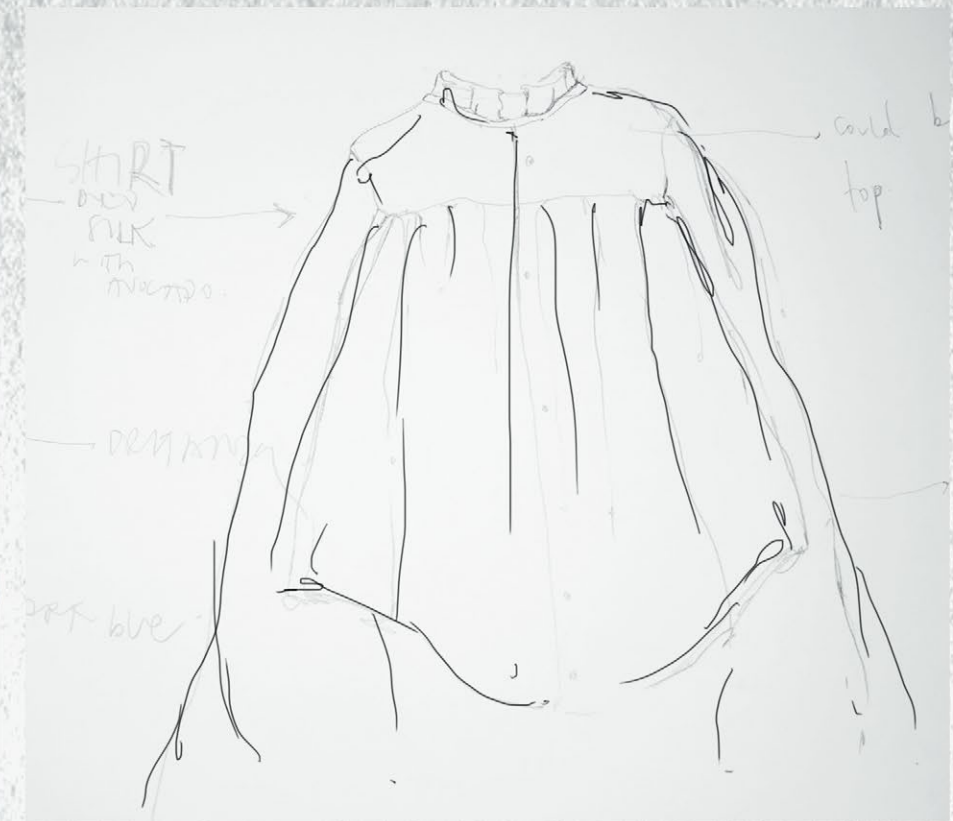


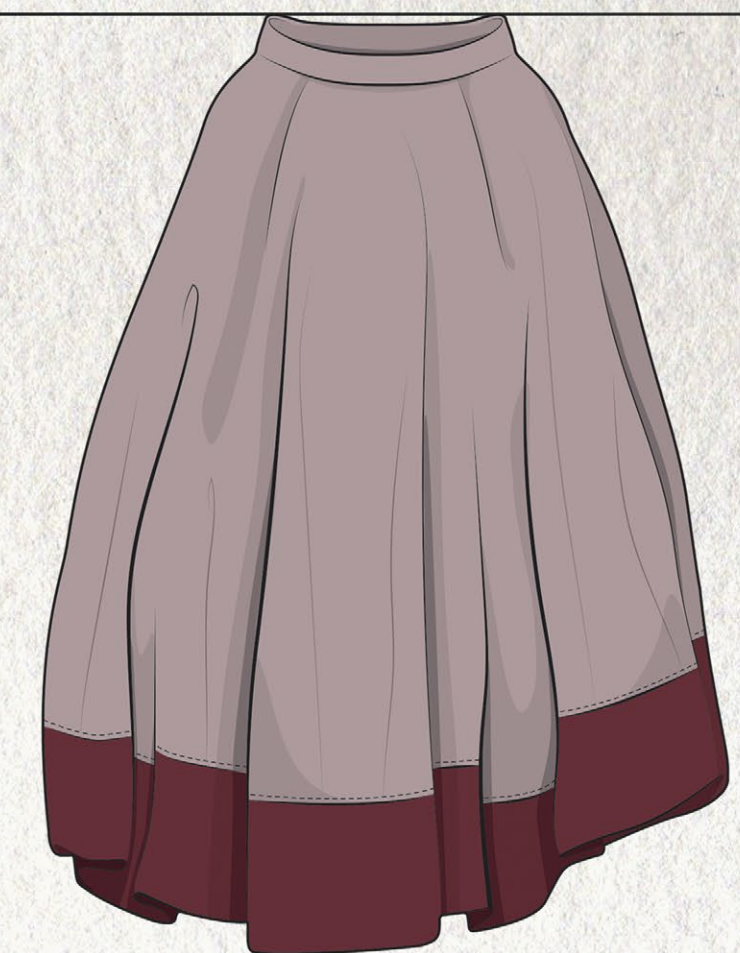
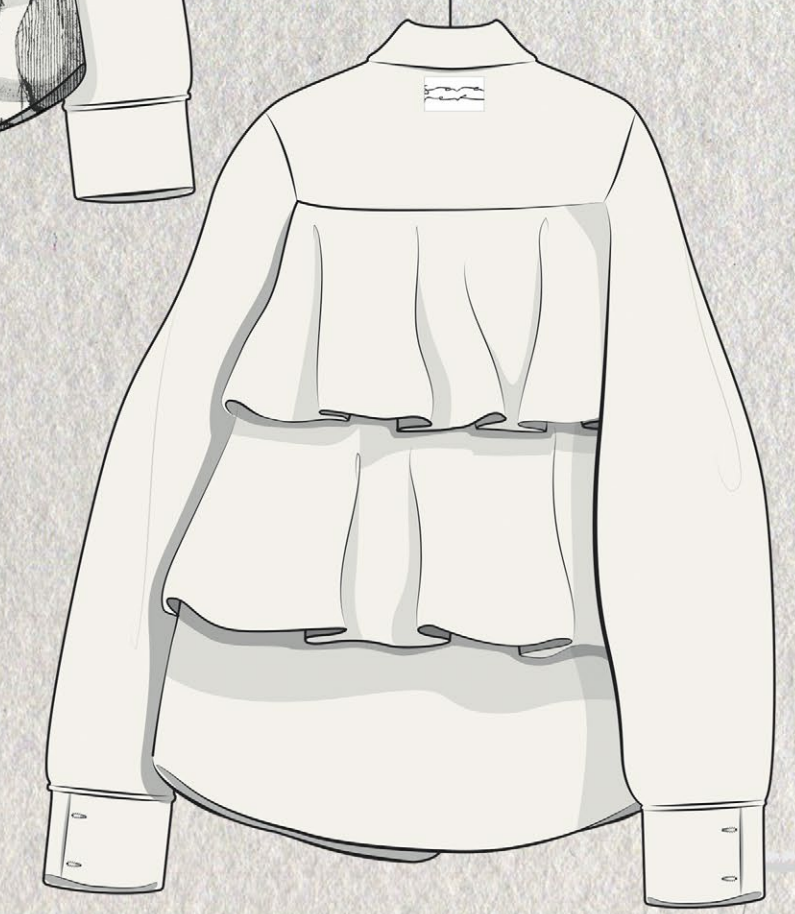
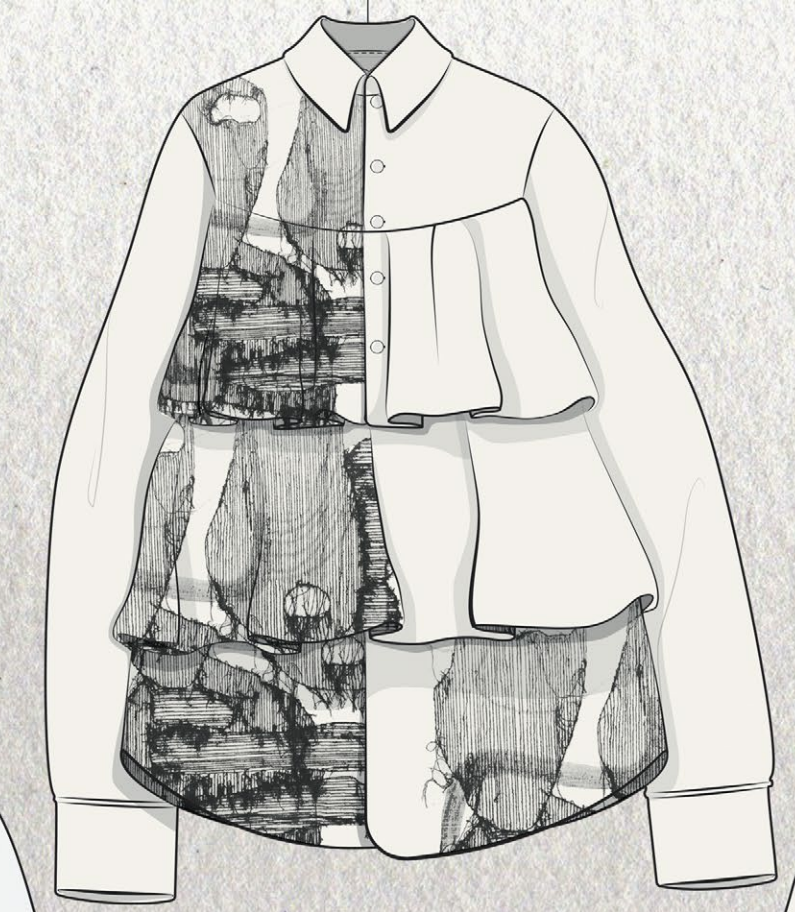
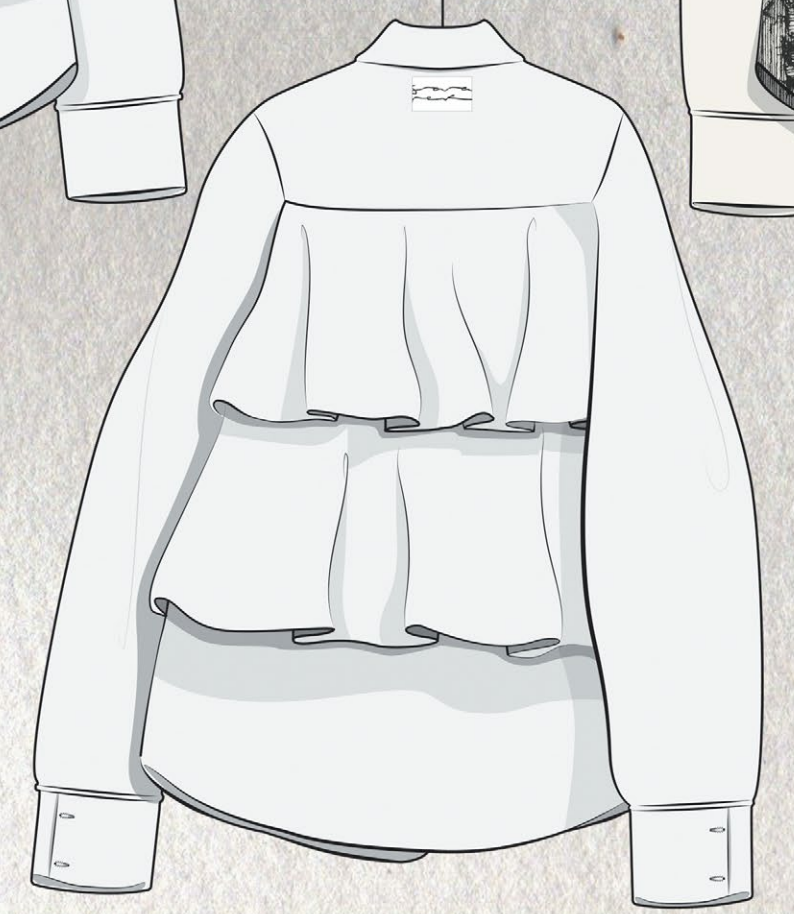
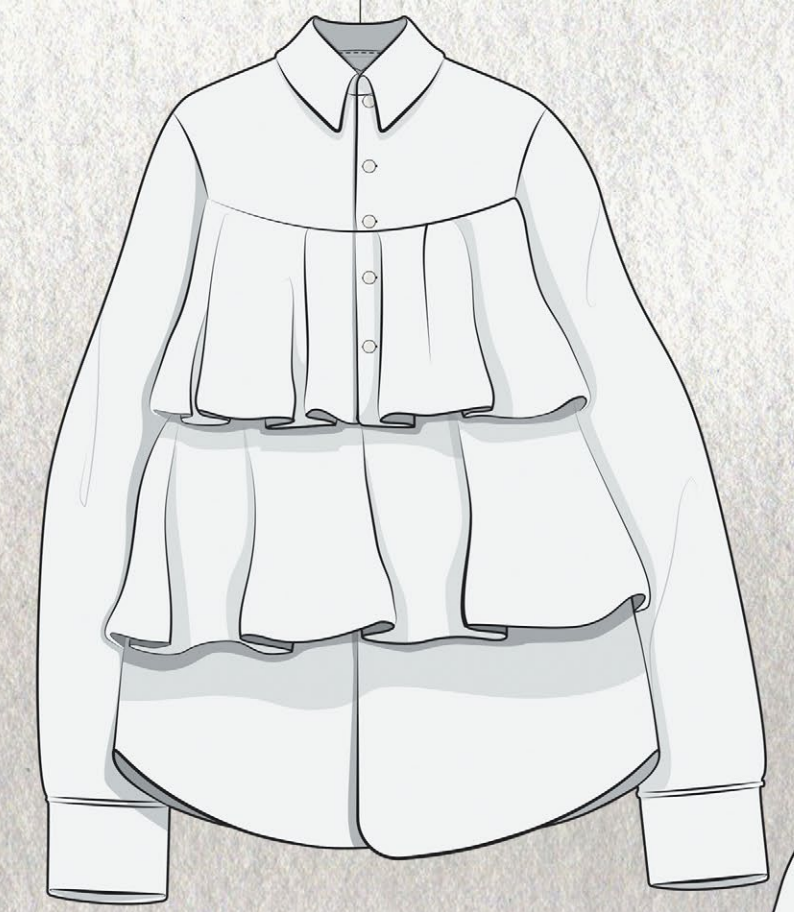
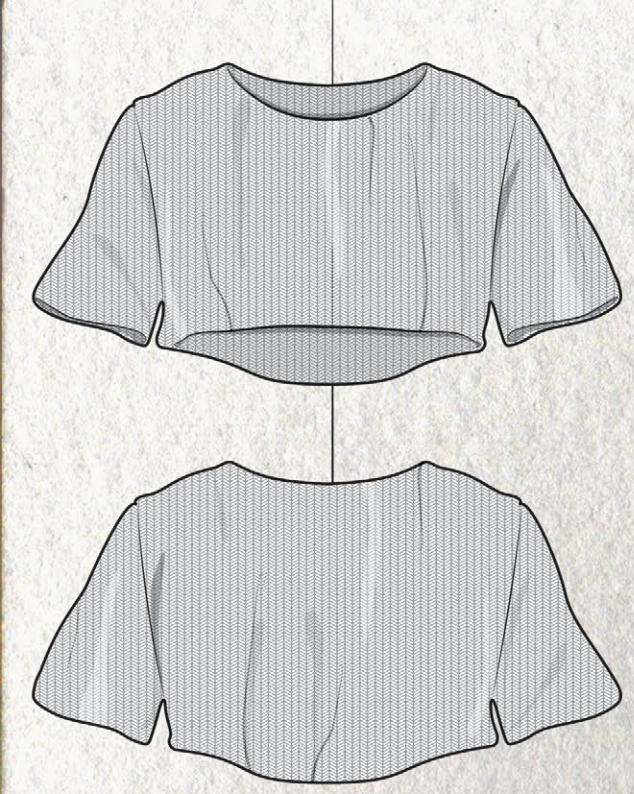
1/3

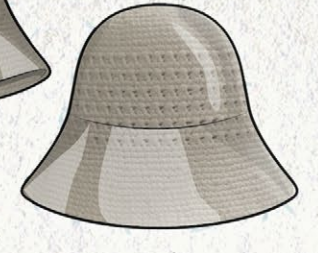
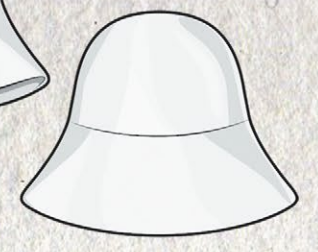
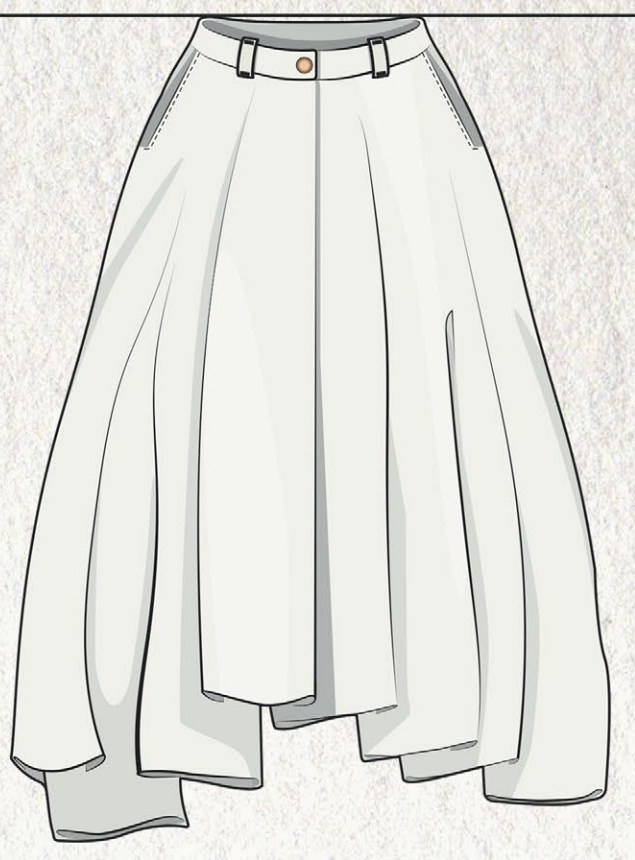
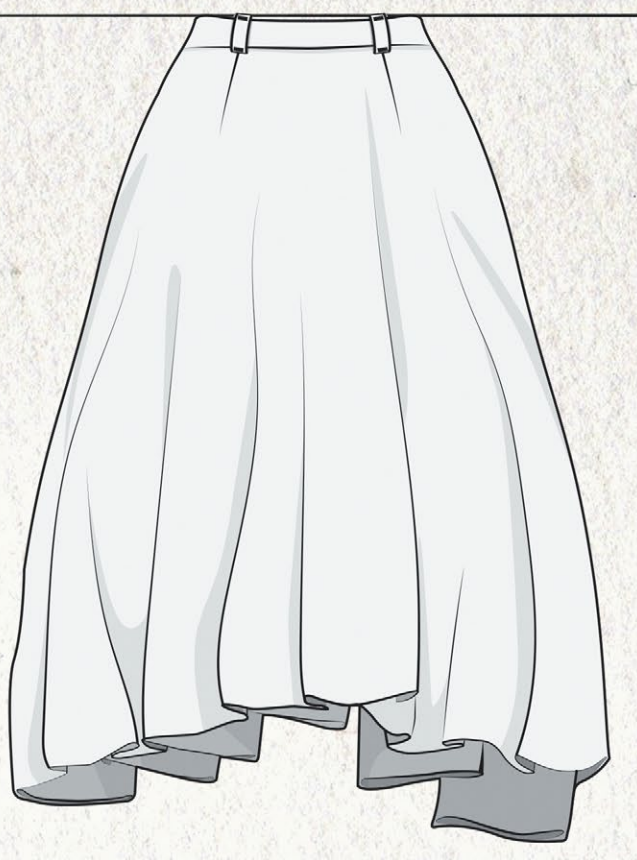
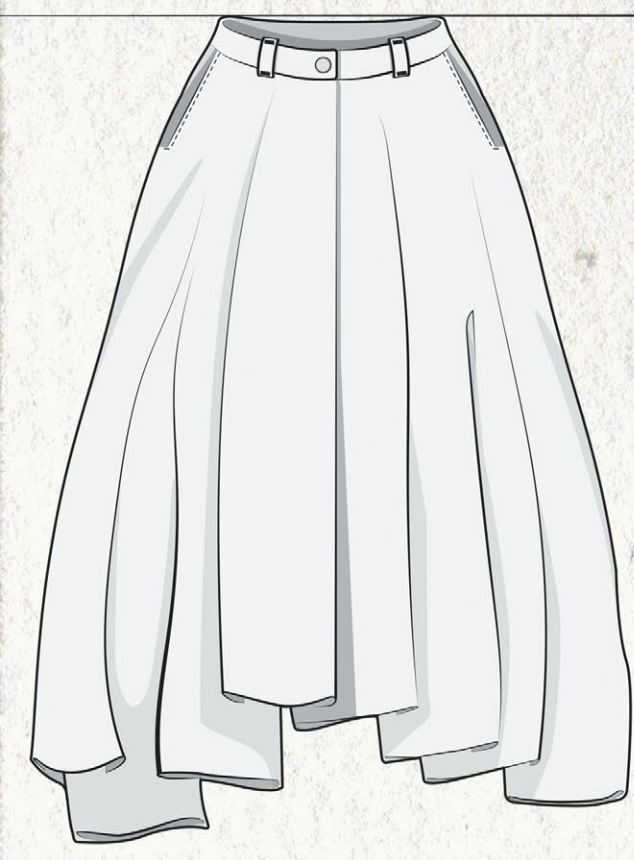
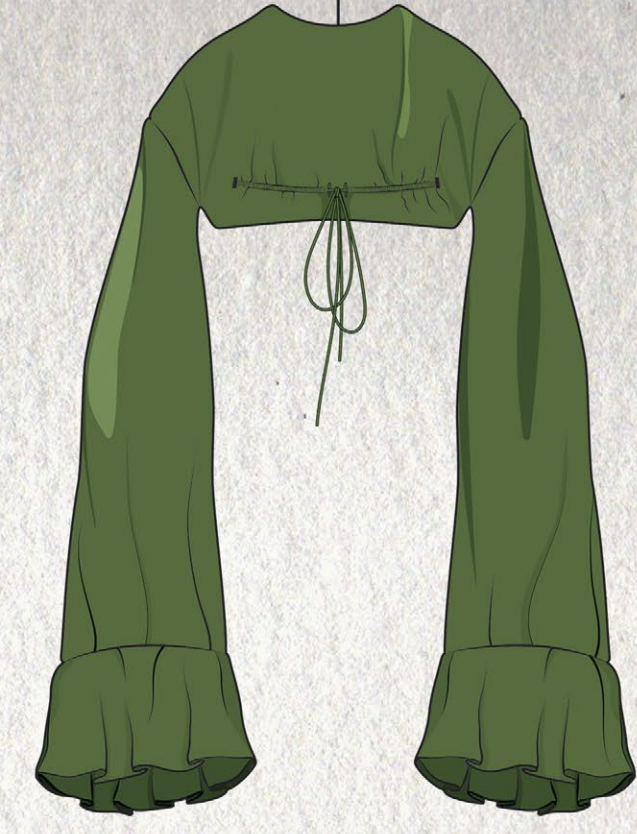
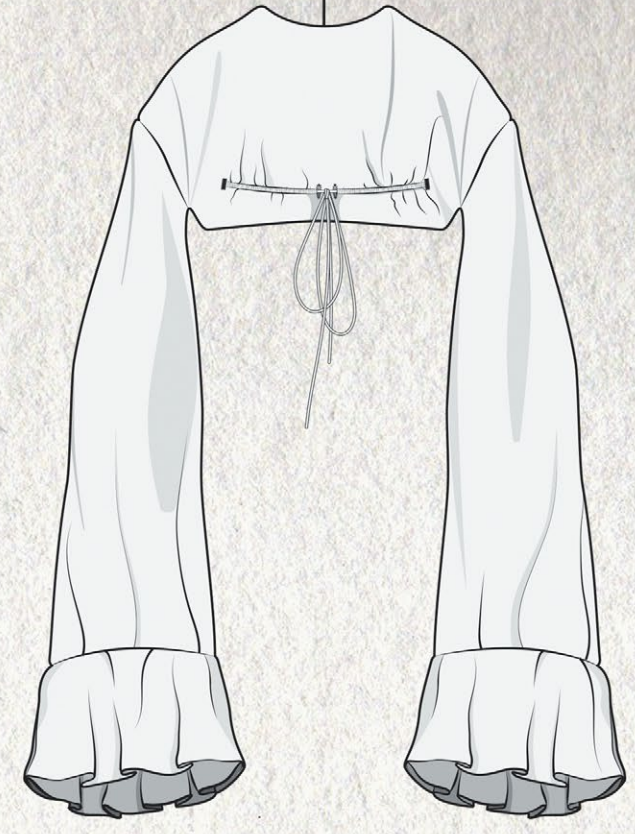
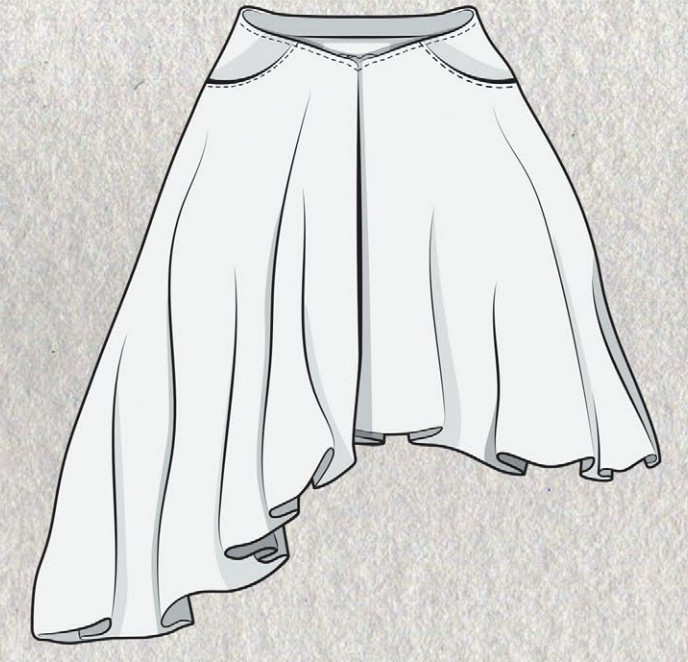
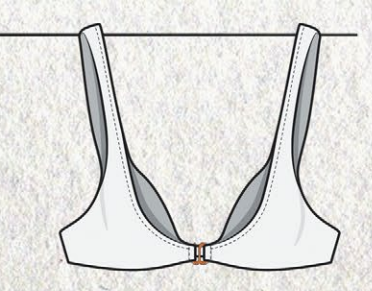
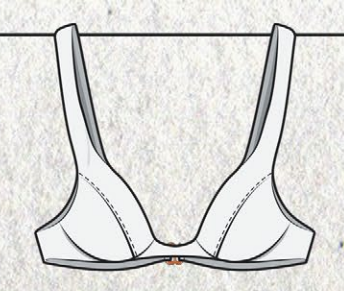
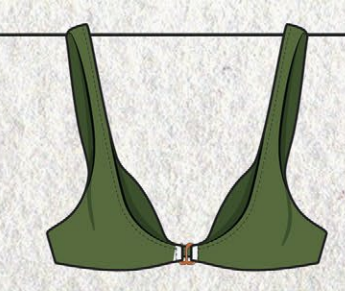
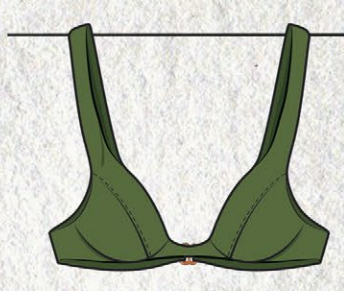
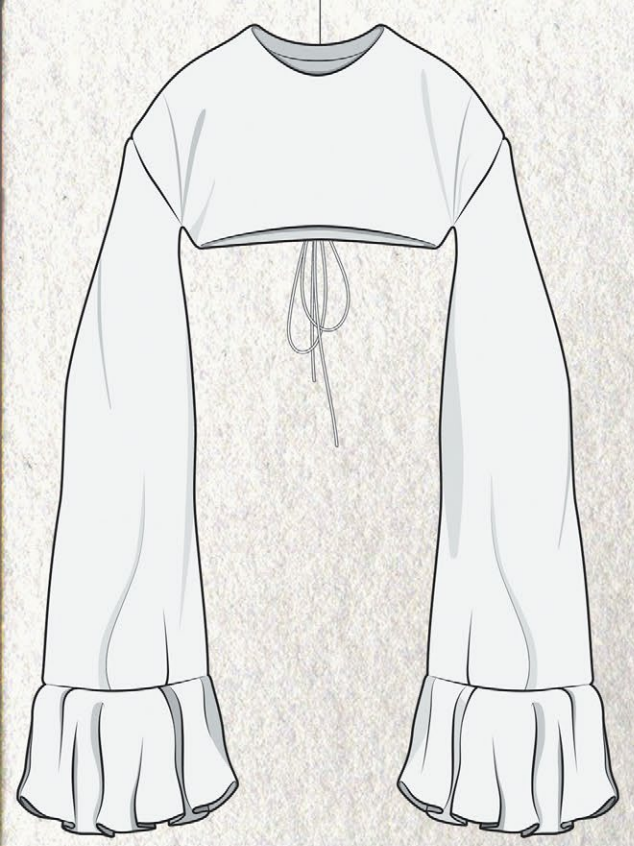
(layers)
more
volume













SARA REKALDE