

HEKLA

MARGARITA DALIT



4281 C

C/G SCD

7940U

10442C

447 C

419C

581 X6C

2404 X6C

19-5920 TCX

19-4010

CO 98%
EA 2%

NY 100%

CO 100%

CO 100%

CO 50%
WO 50%

SE 100%

WV 50%
WP 50%

SE 100%

WO 100% CO 100%

PA 100%

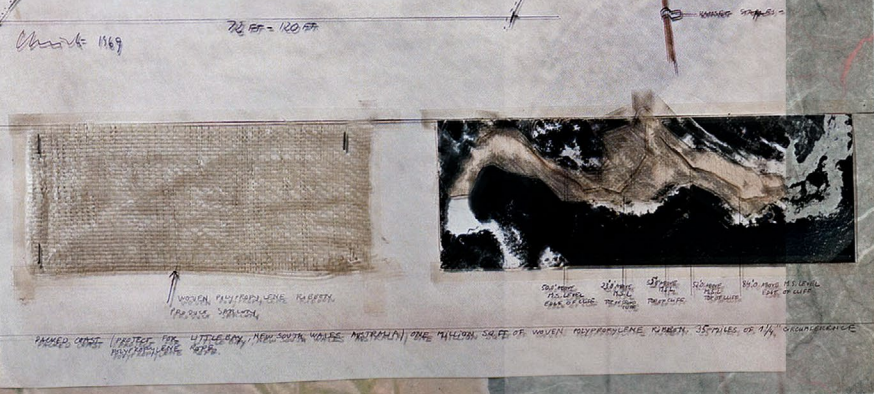
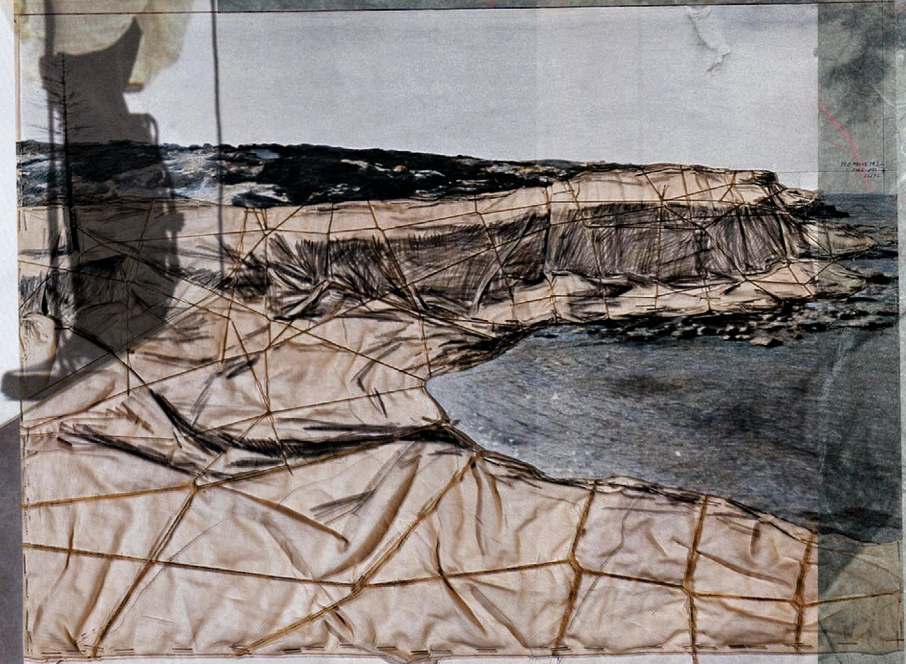
CO 100%

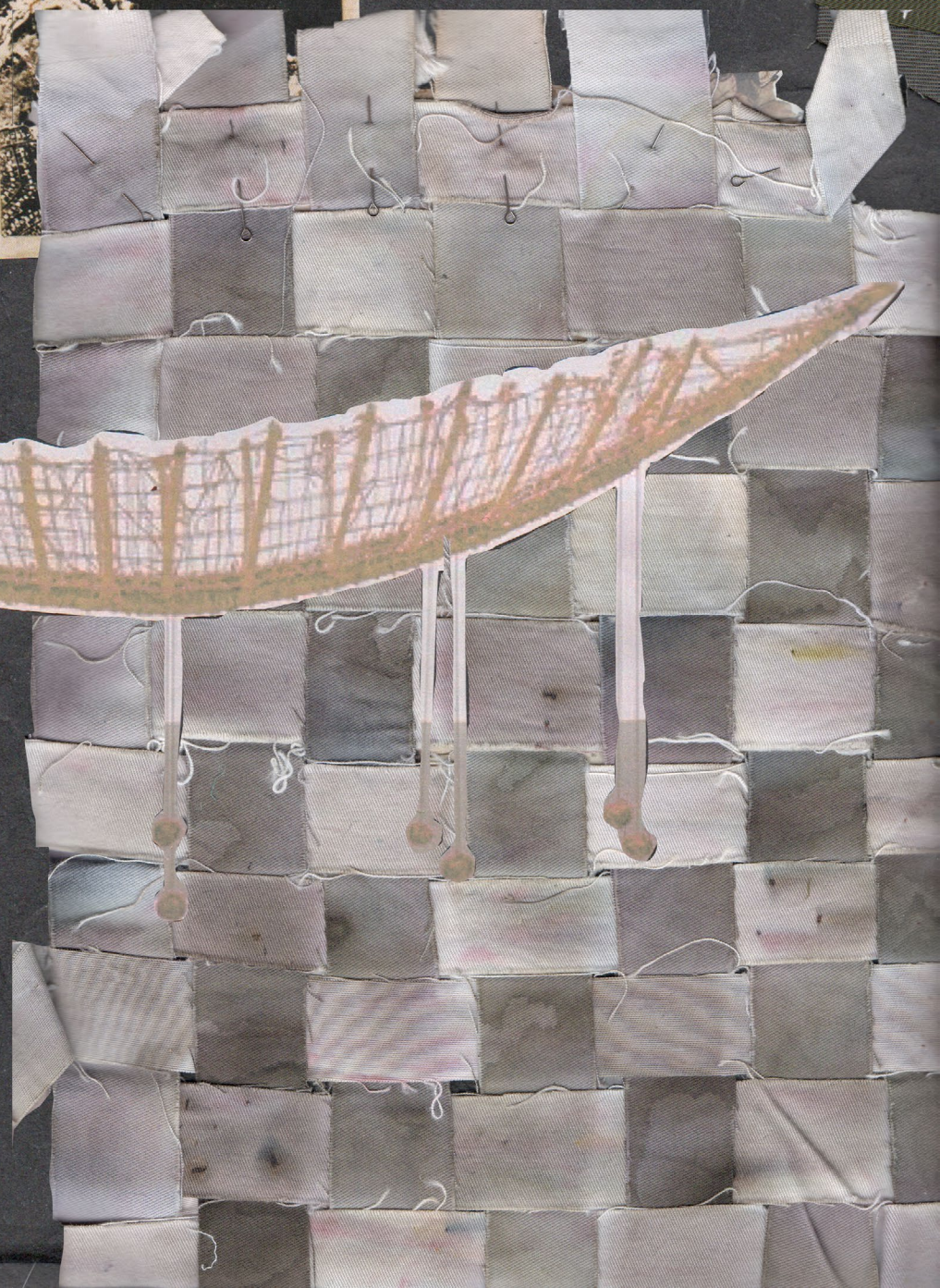
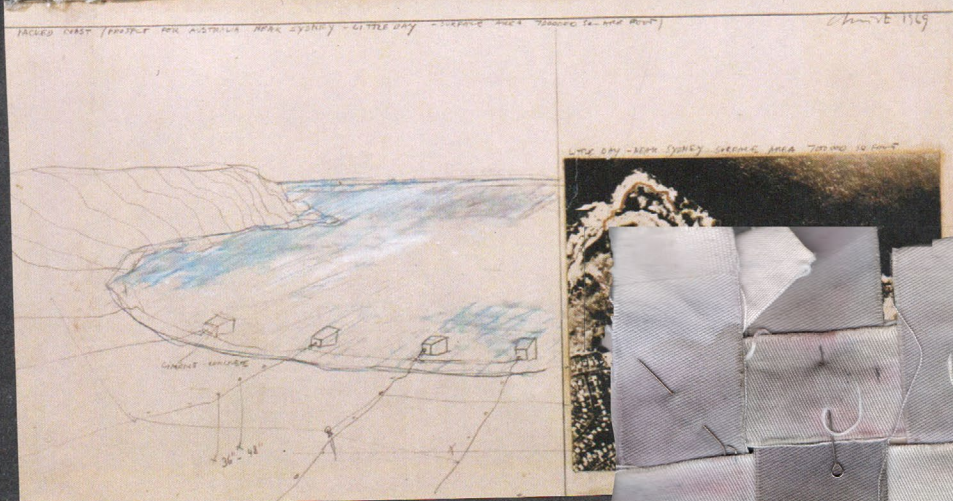
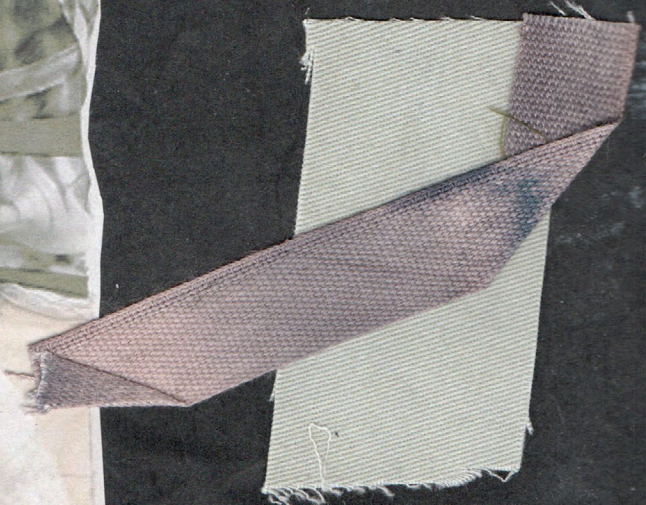
CO 50%
PE 50%

CO 80%
SE 10%
PE 10%

CO 100%

SE 100%

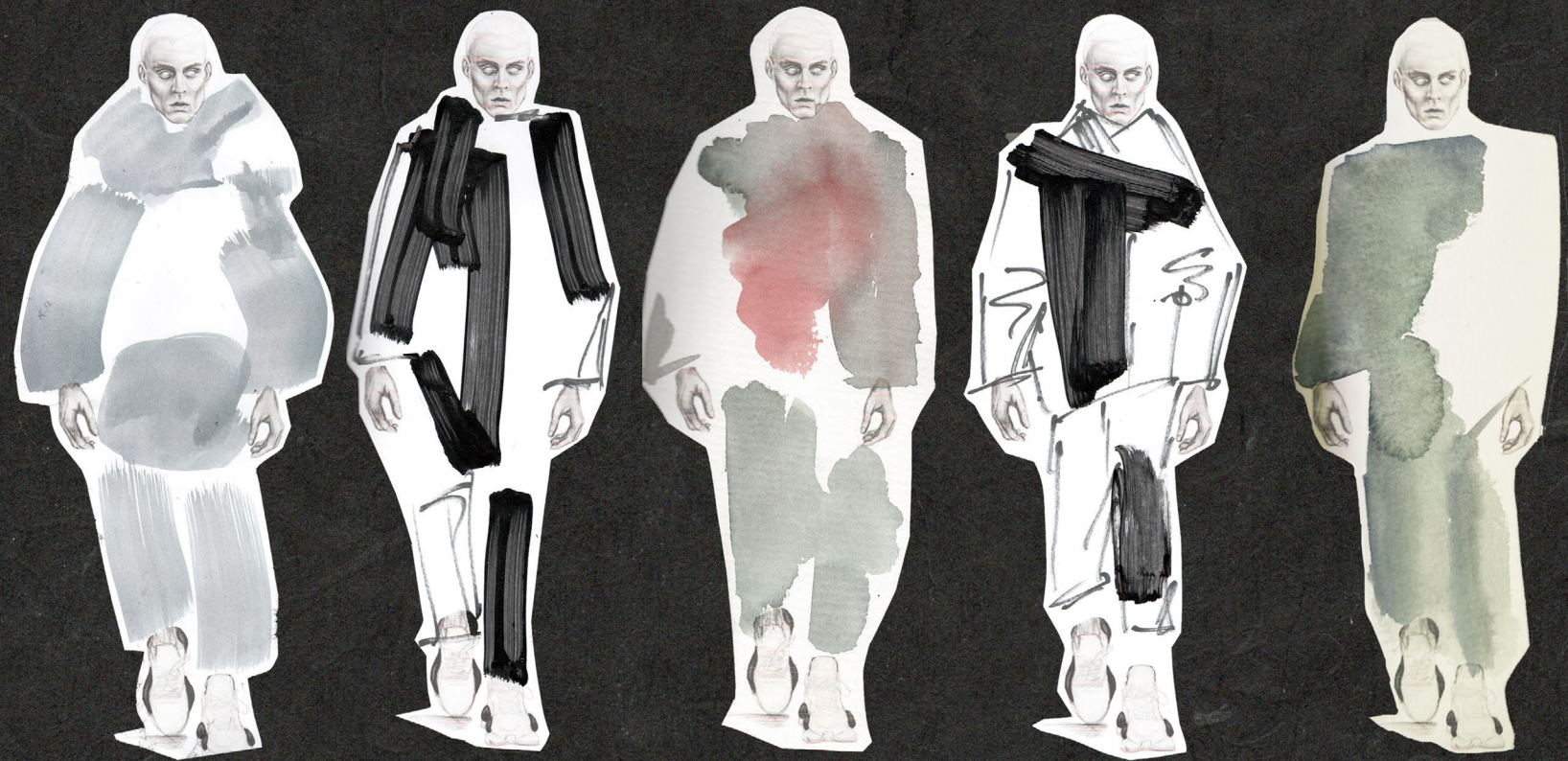
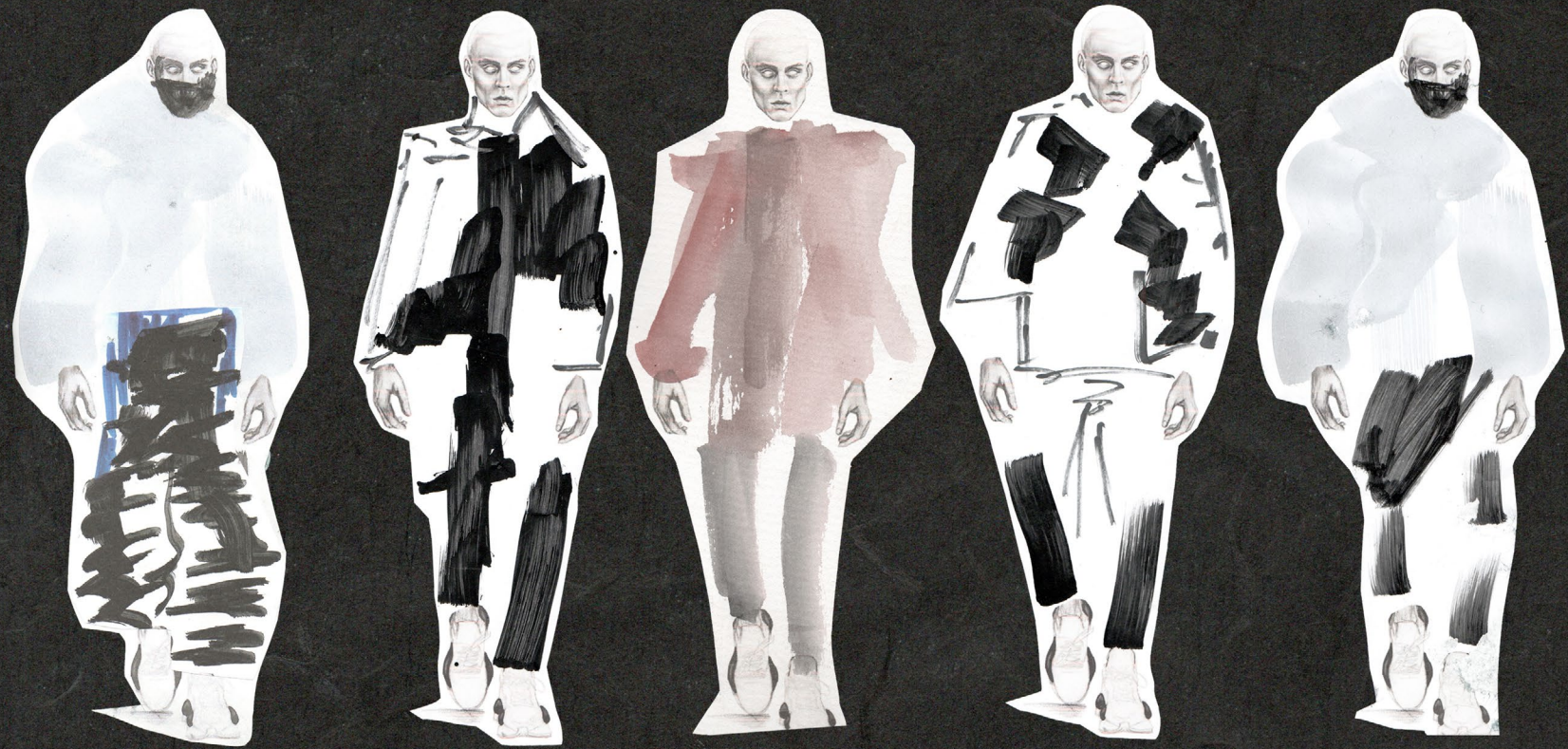






REFLECTIVE SPRAY







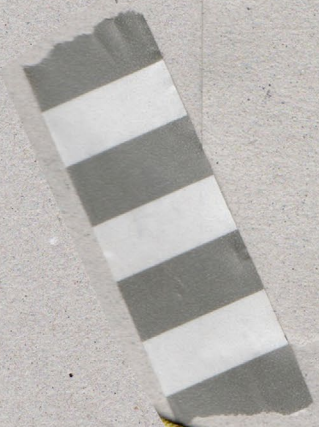
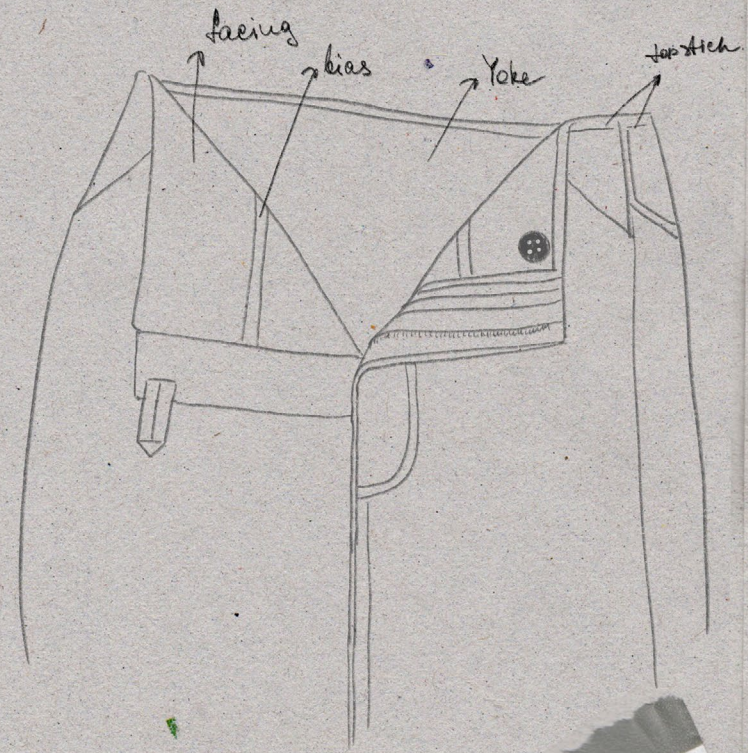
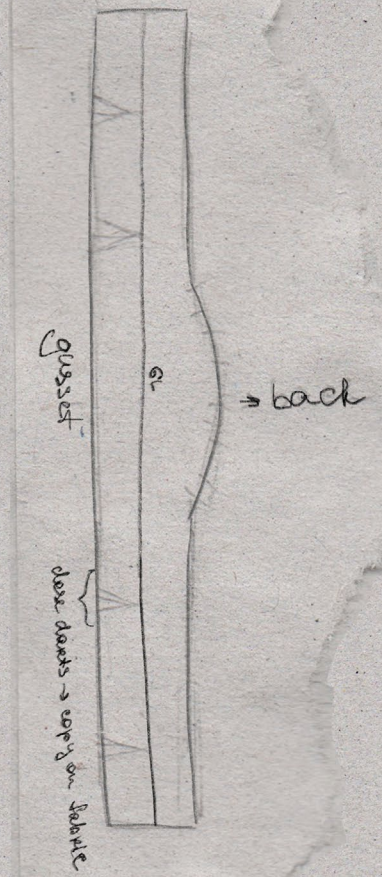
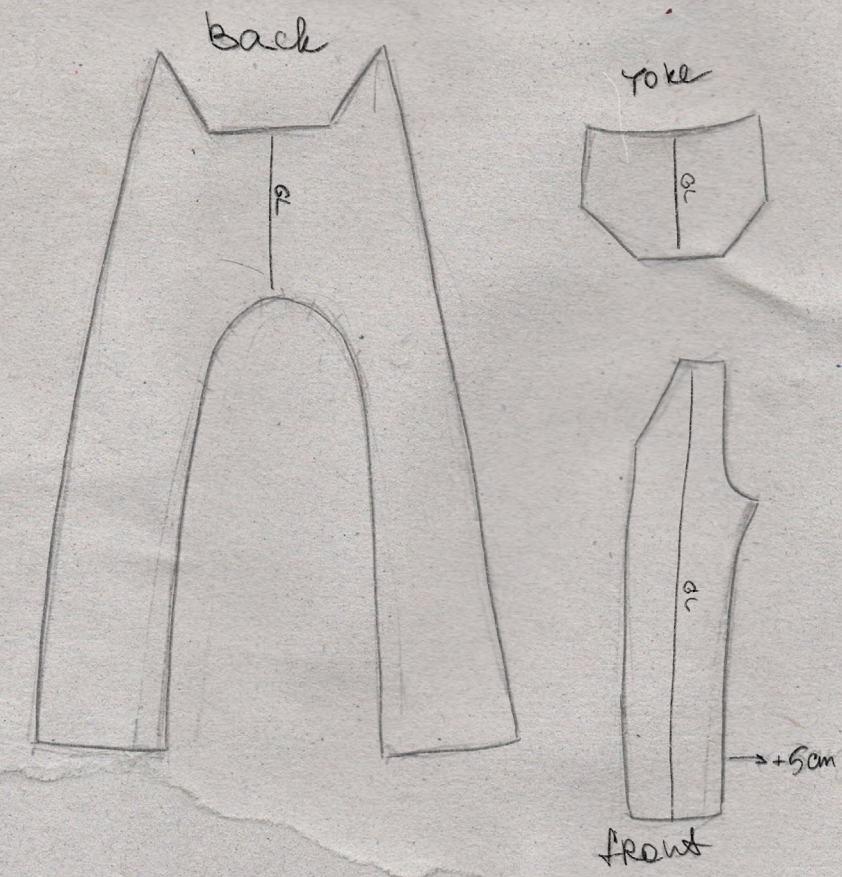
REACTIVE TEXTILE INK

DYE & BLEACH

DYE

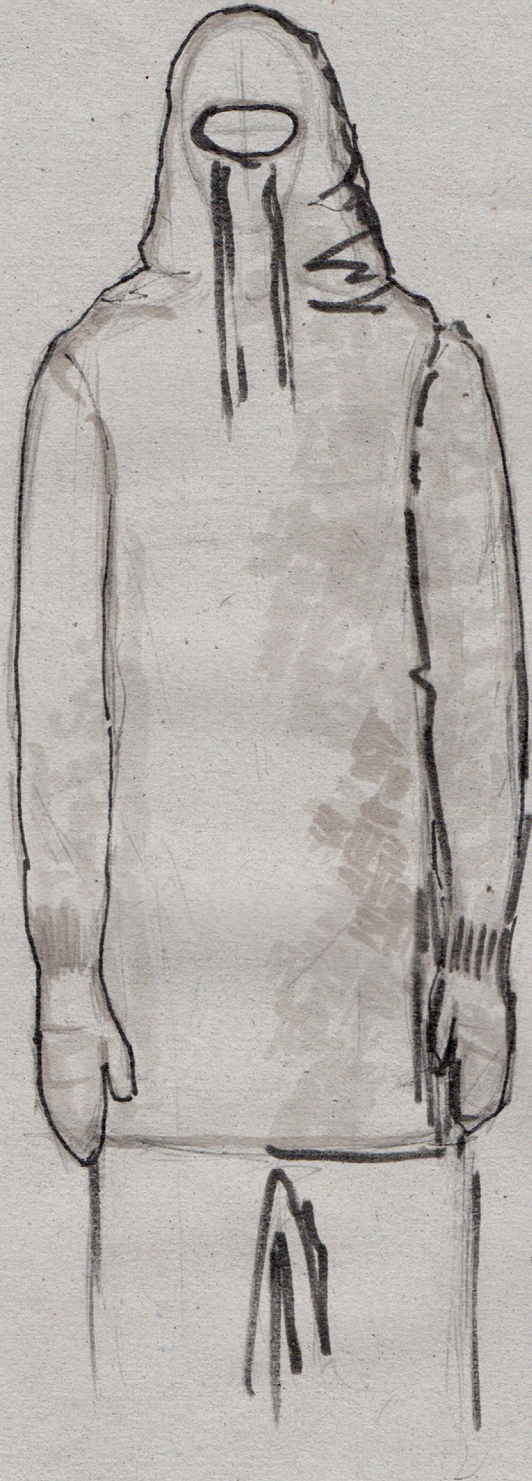
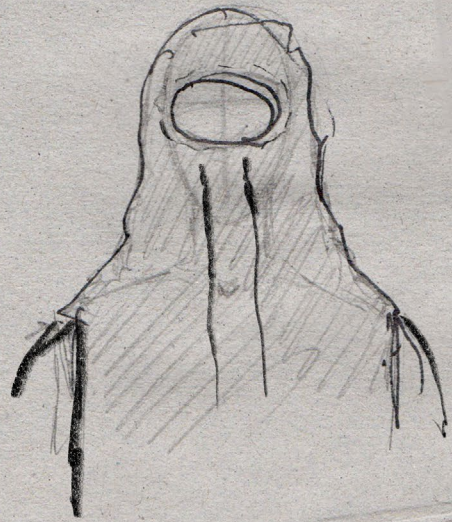








add the opening



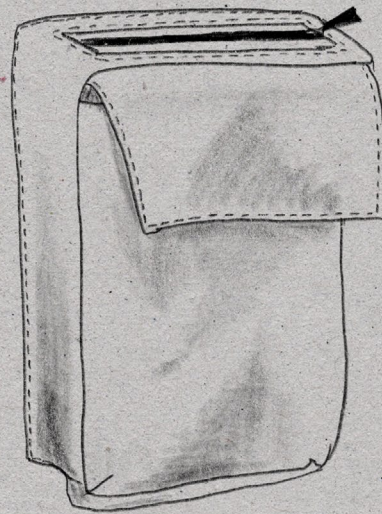
+ seam on the center front

+ topstitch

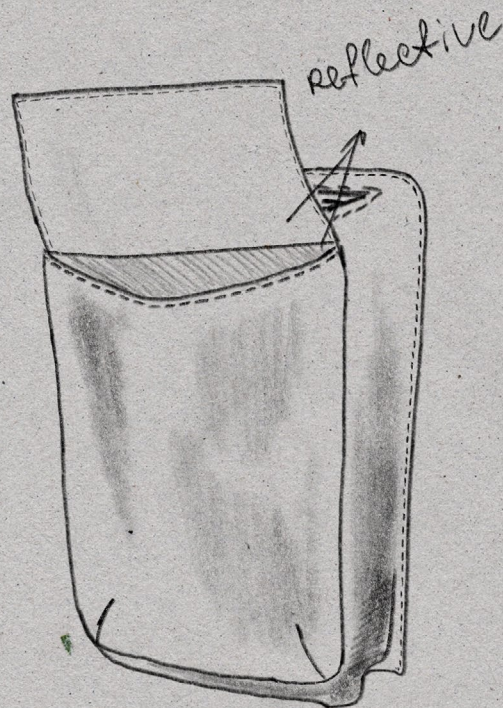
lower neckline



pockets on the sides
invisible zipper



double cargo pocket



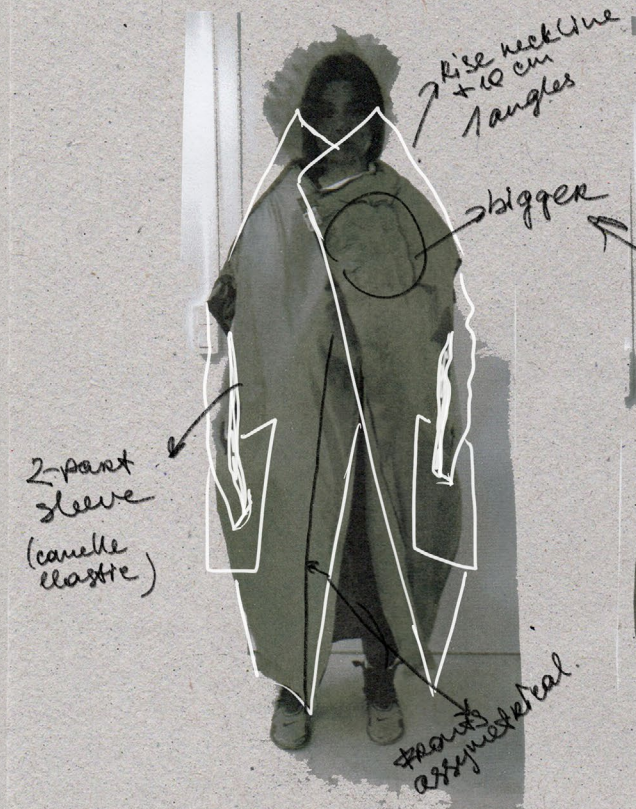
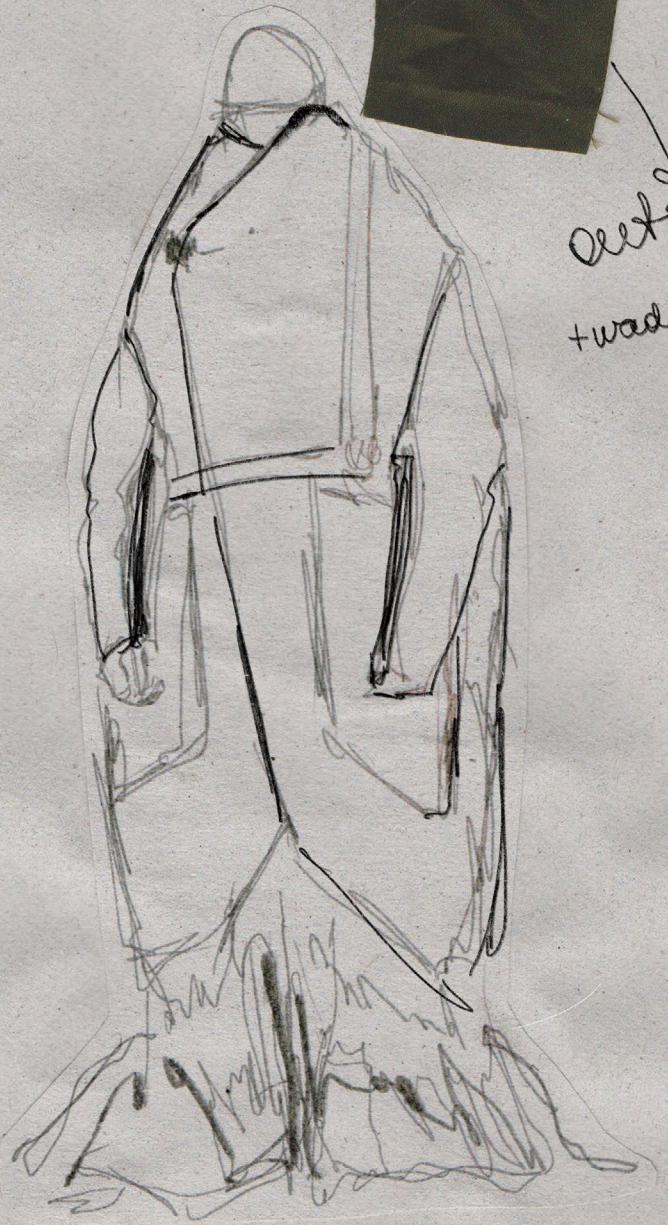
разбор по моду



→ inside



outside
+wadding

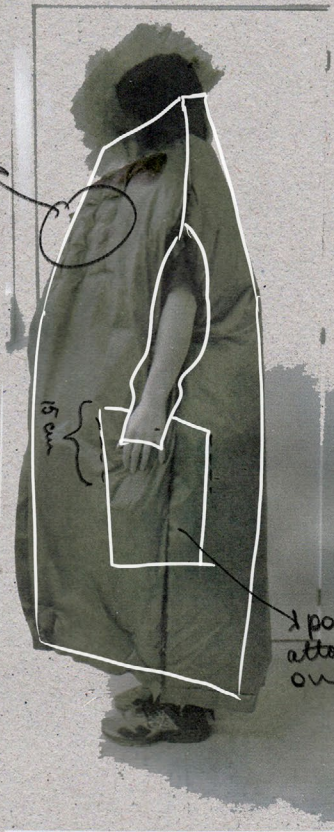


Rise neckline
+ 10 cm
angles

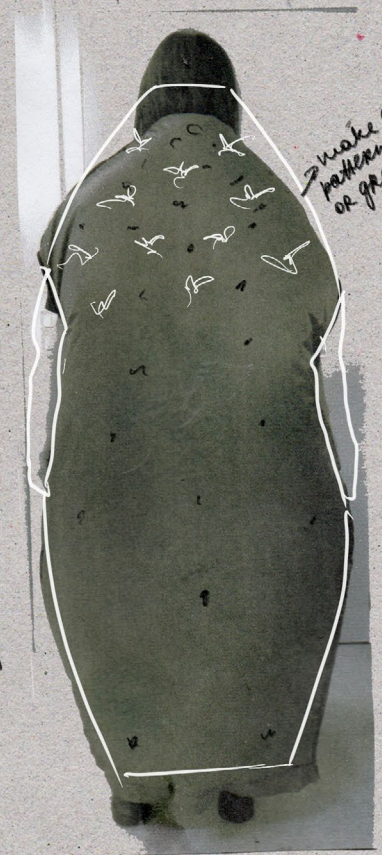
bigger

2-part
sleeve
(cannelle
elastie)

fronts
asymmetrical



1 pocket
attached only
on sides

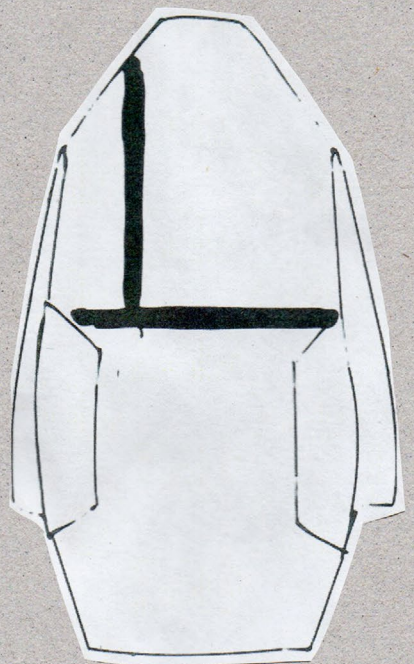


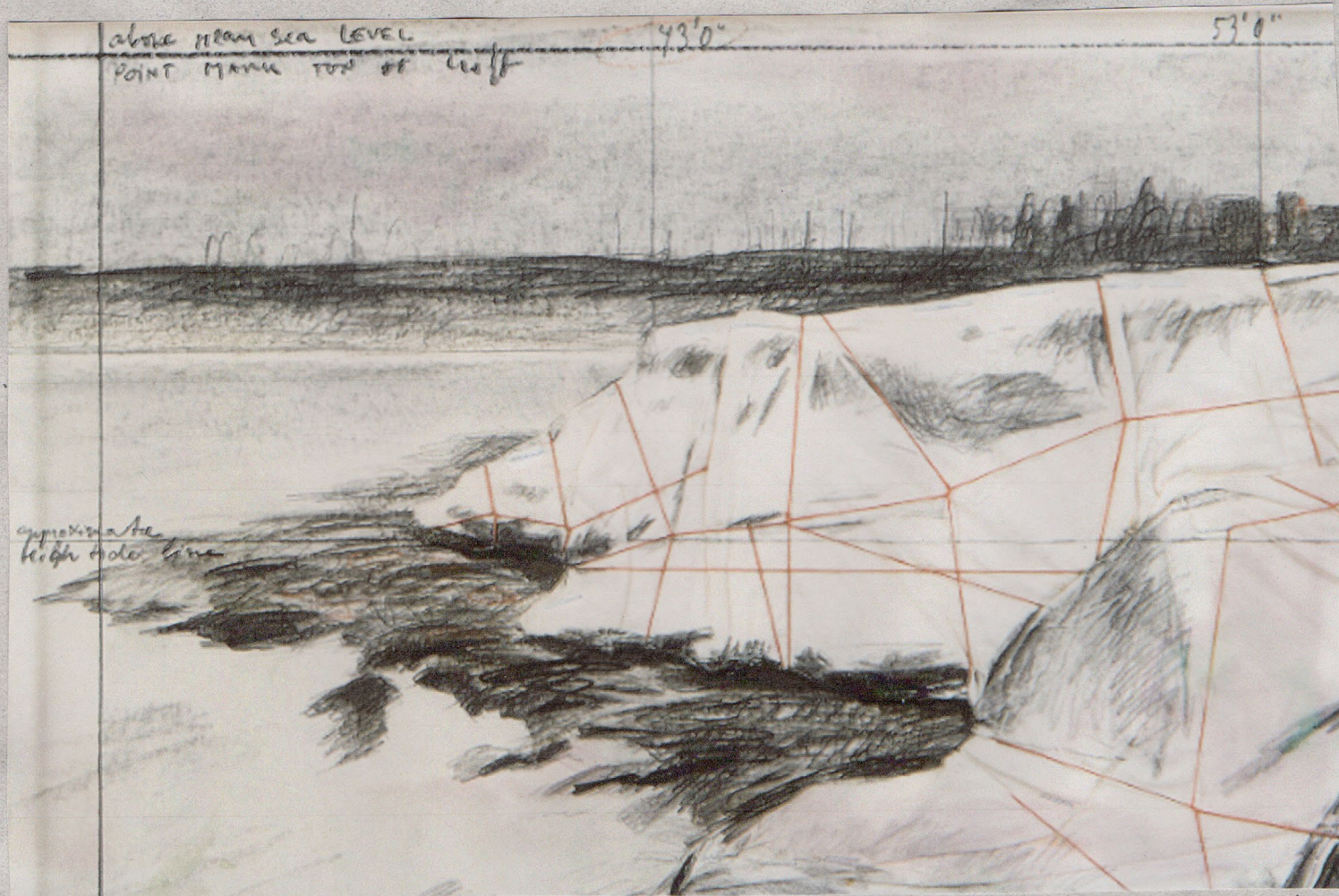
make printing
pattern of big part
or grad cut?

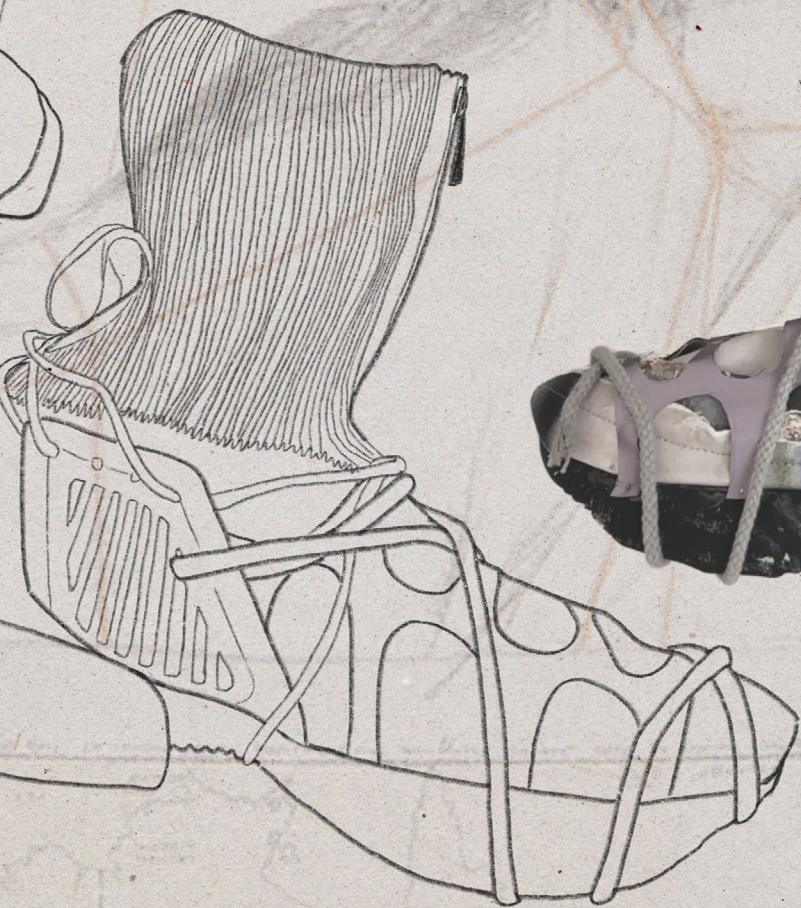
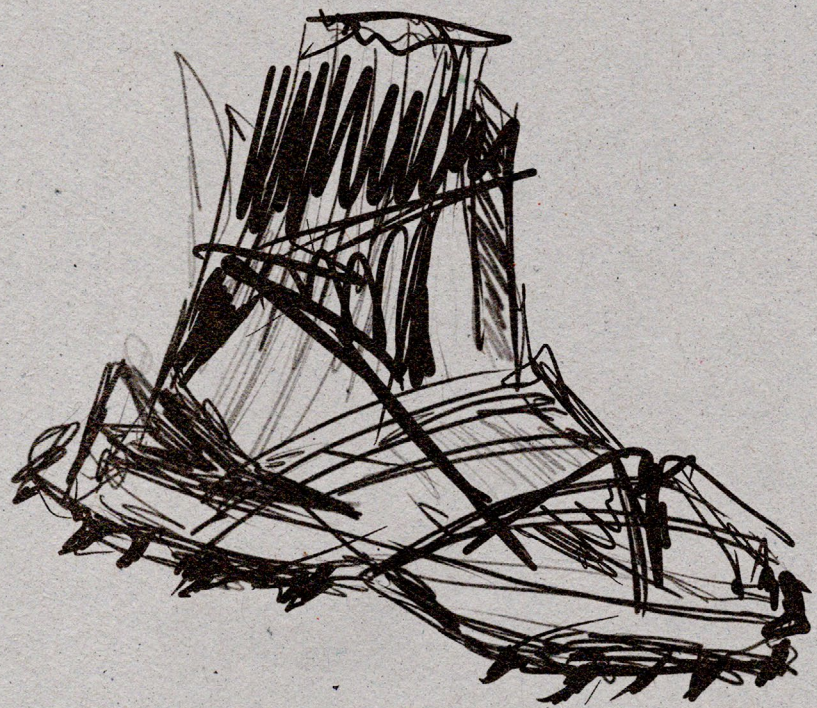


collar
swan

zipper







Матрицы должны быть
схематичные и карточные,
точные.

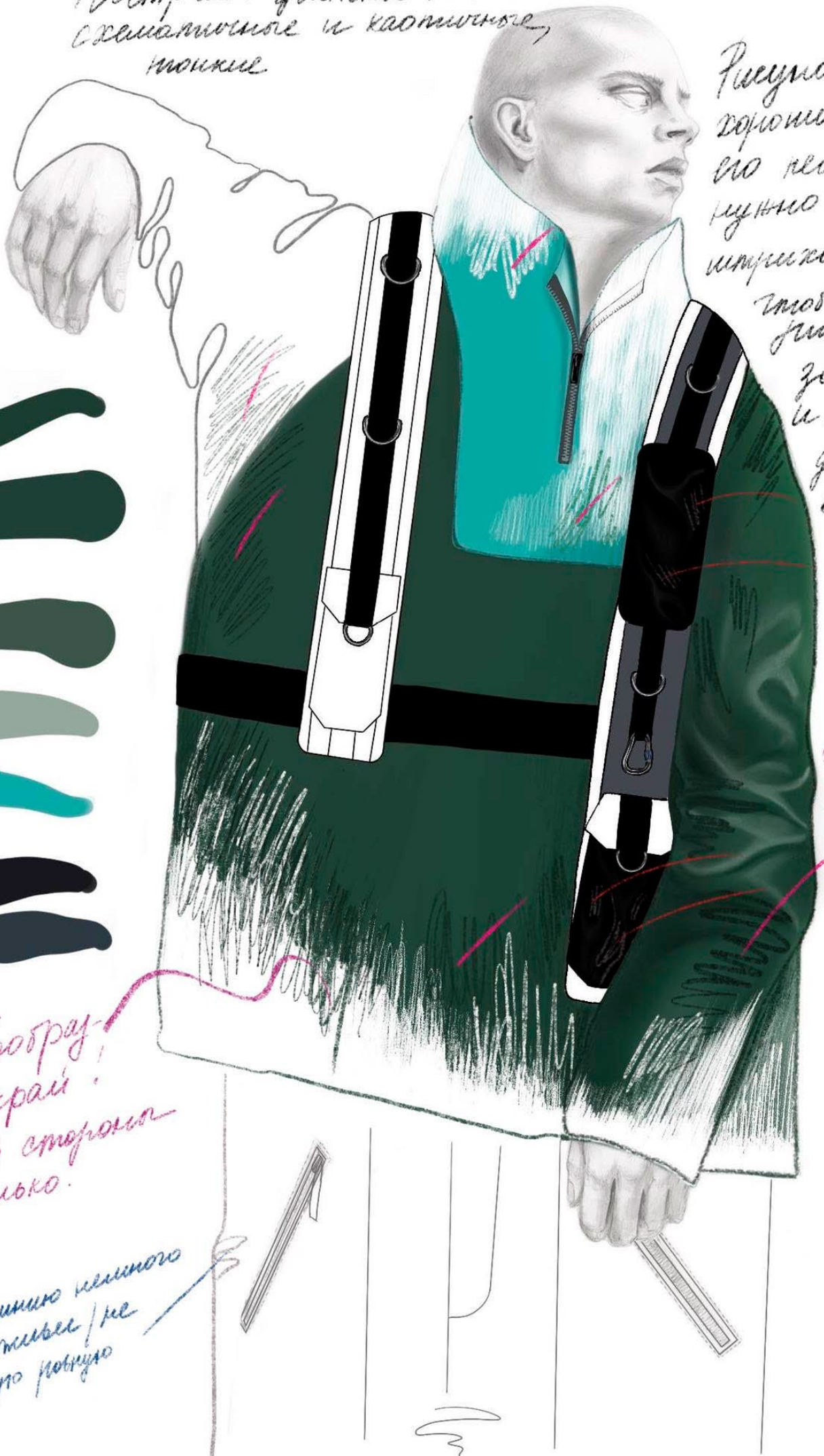
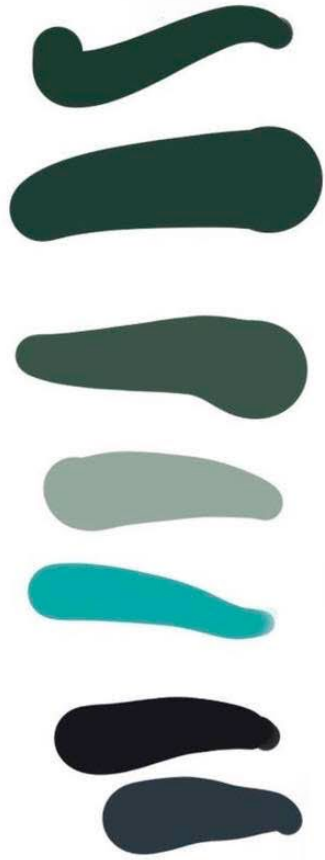


Рисунок
хороший,
но лишнего
лучше отнять
штрихами,
чтобы
рисунок
задника
и прищипки
динамичку
в изогроне
или
одежда

хочется
добавить
штрихов

Более
разнообраз-
ный край!
С этой стороны
только.

Эту линию лишнего
лишнее/не
такую ровную



Эту часть
отделить / сделать
не так / сделать
больше / сделать
и штрихи

Эту
линию
лишнее

линия
лишнее
лишнее

Смотрите,
как волос
надо подумать,
нарисовать



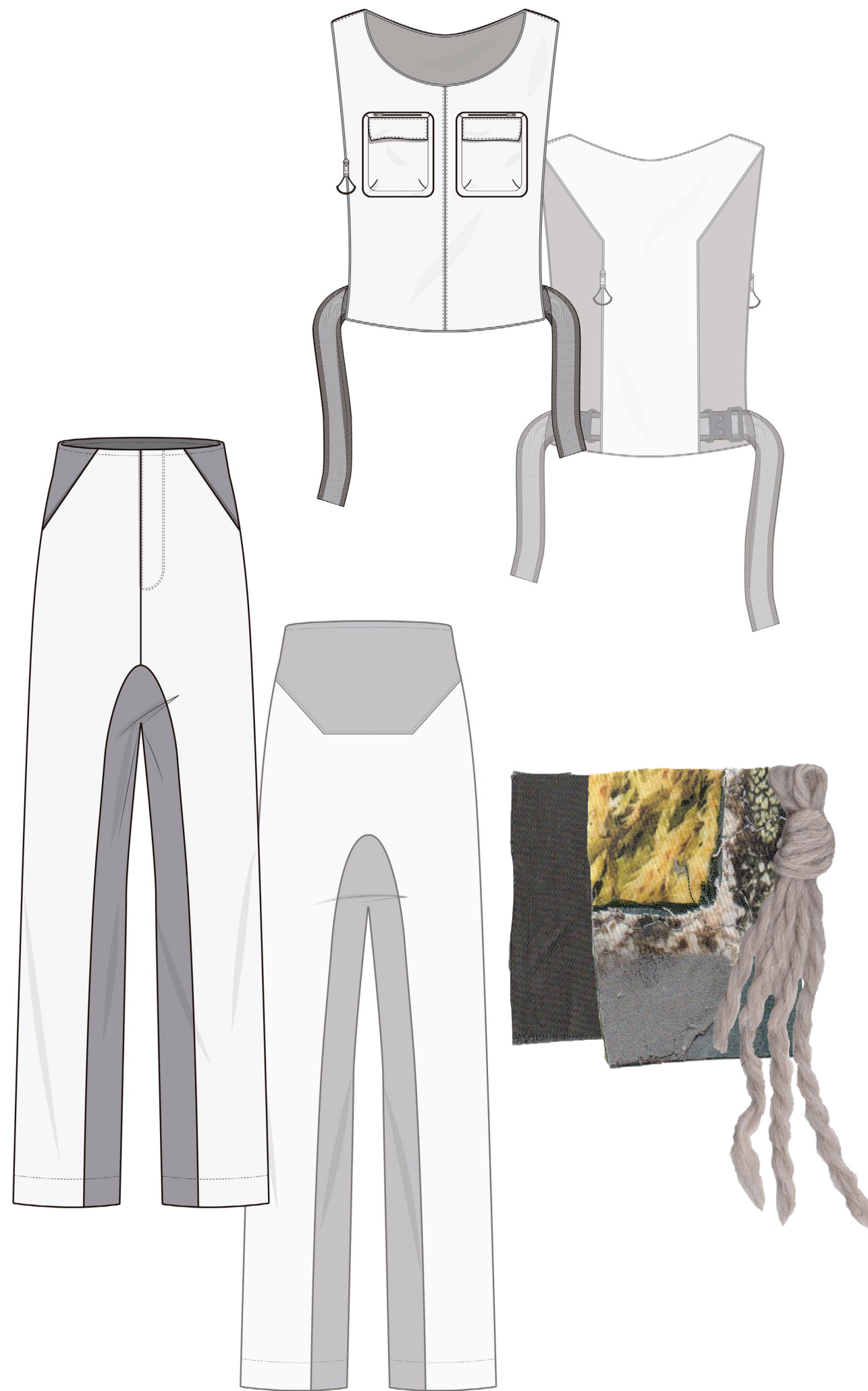
переходы от
линии штрихов
и в более
плотной укладке

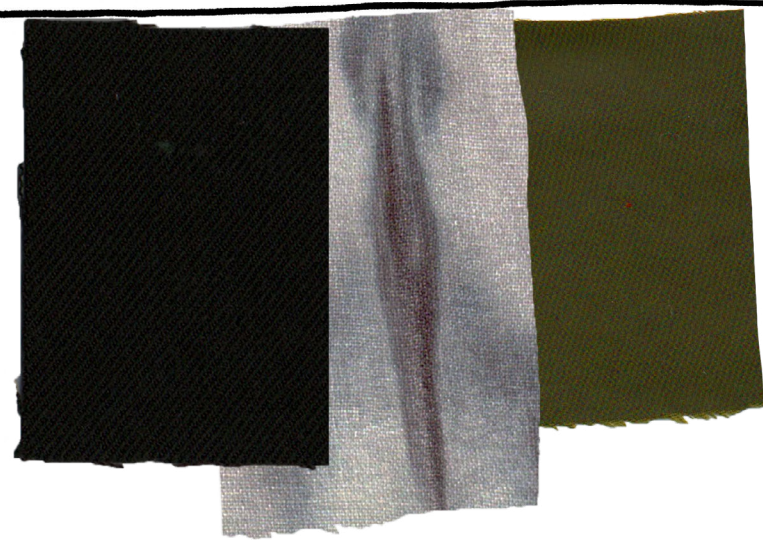
лучше
лишнее
лишнее
лишнее

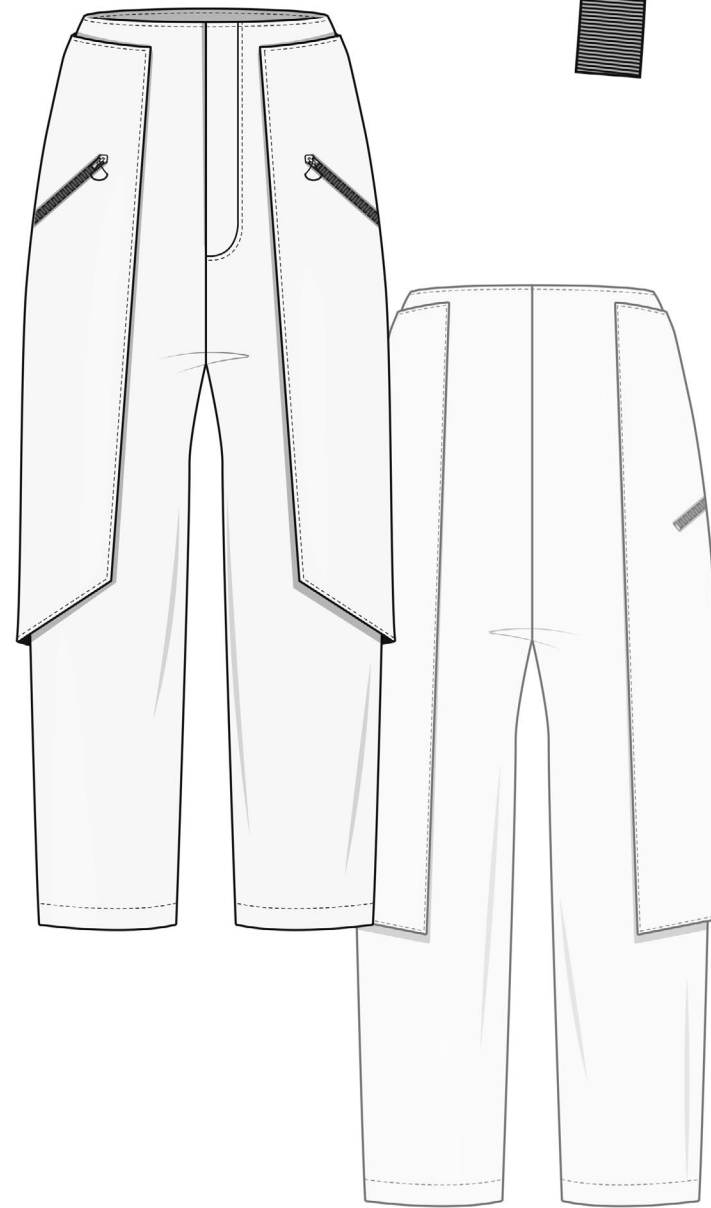
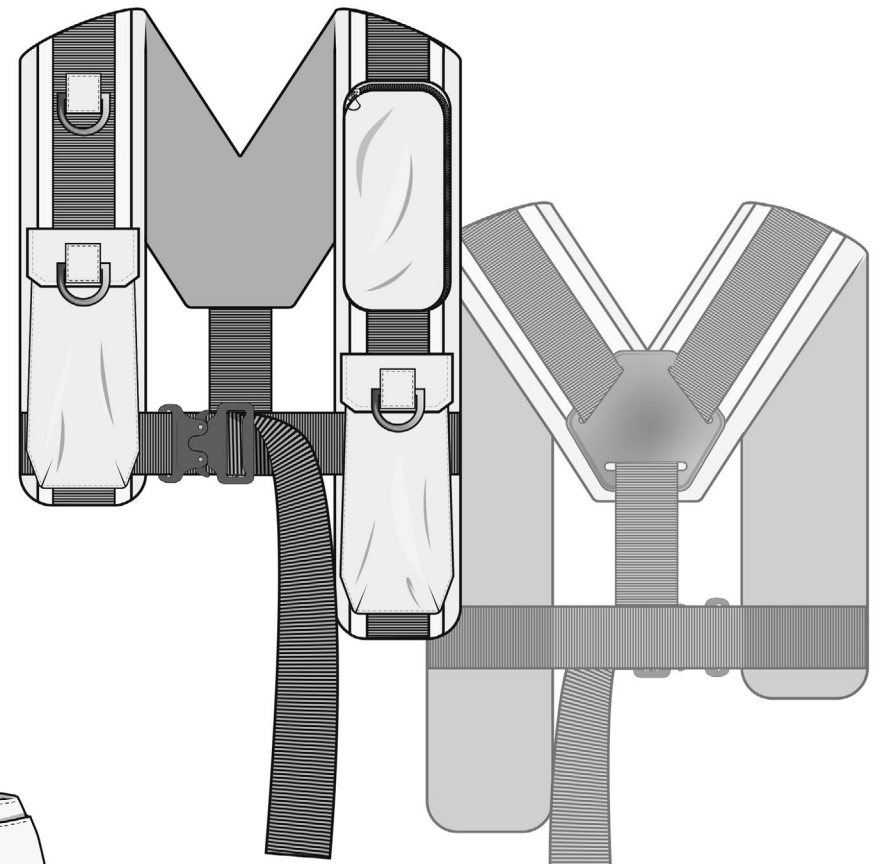


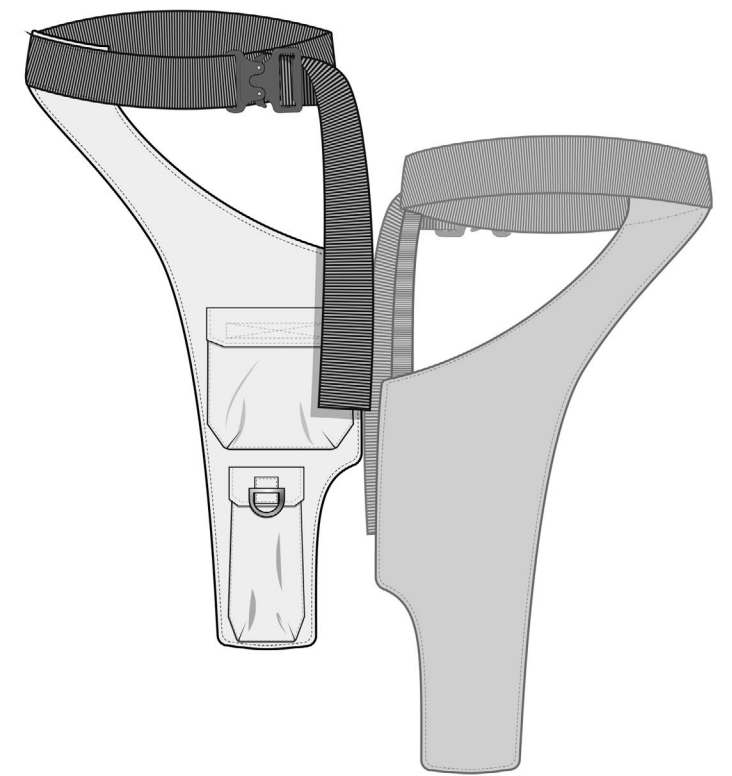
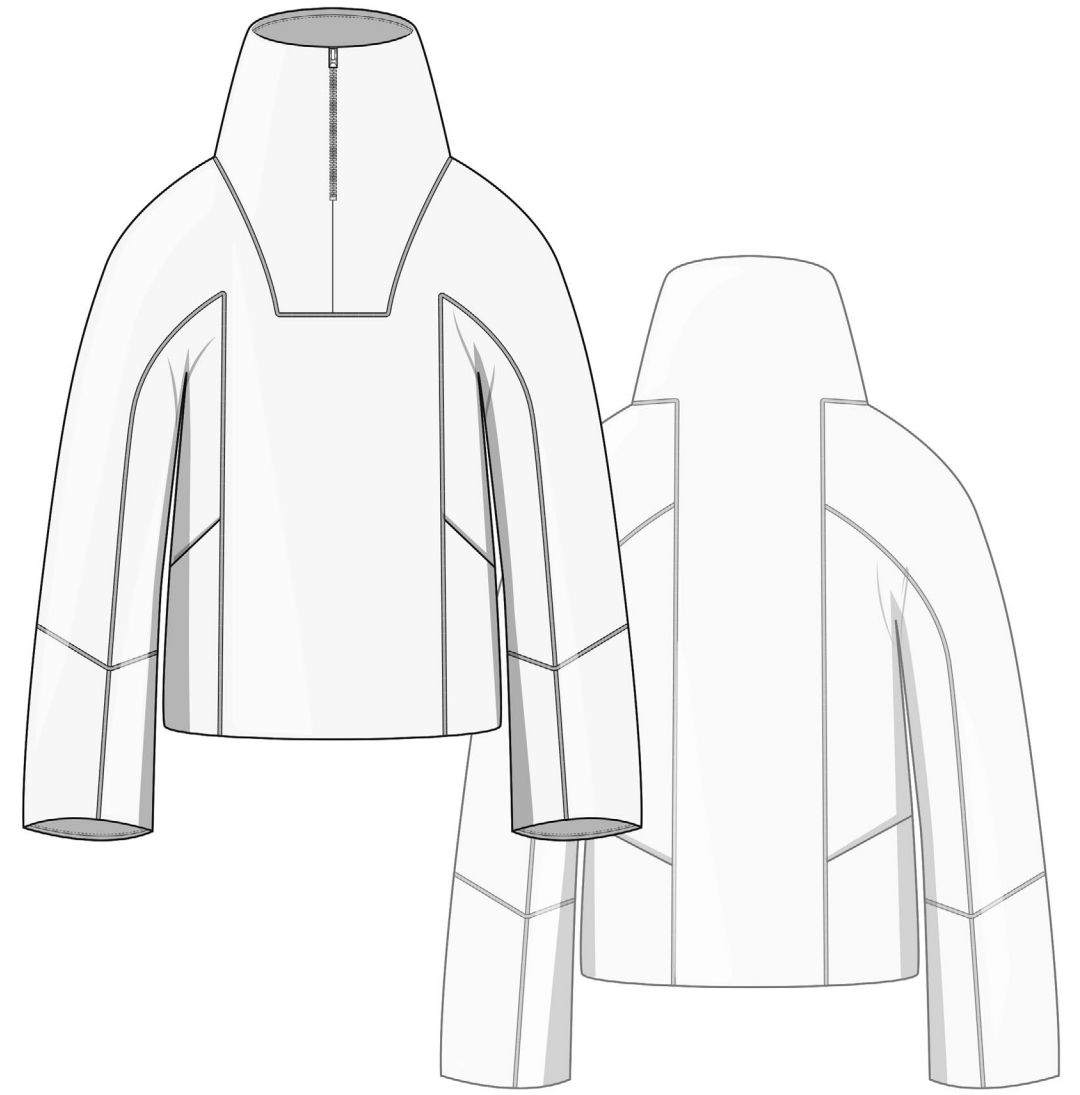
Эту часть
наоборот
в штрих и
лишнее/не

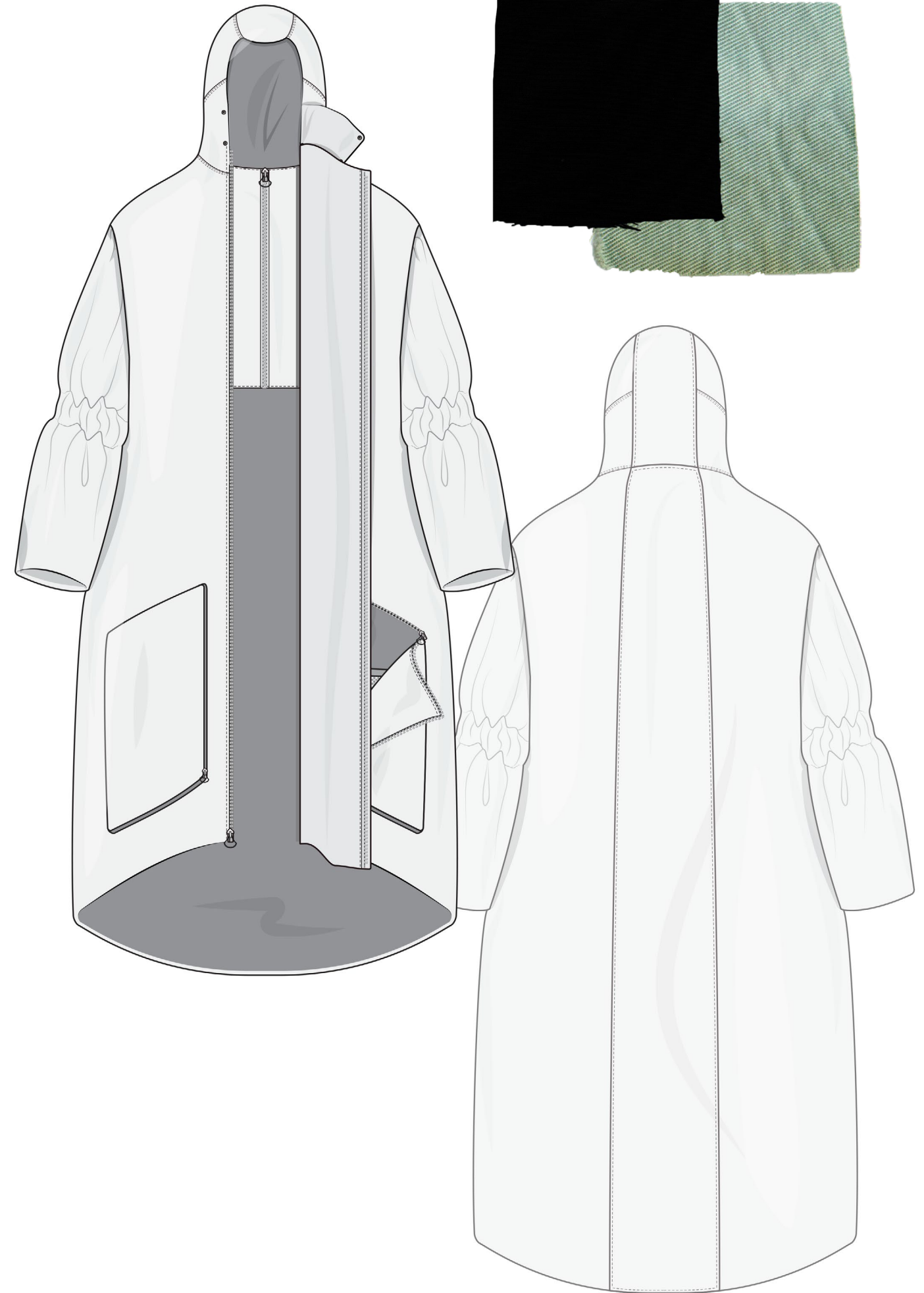
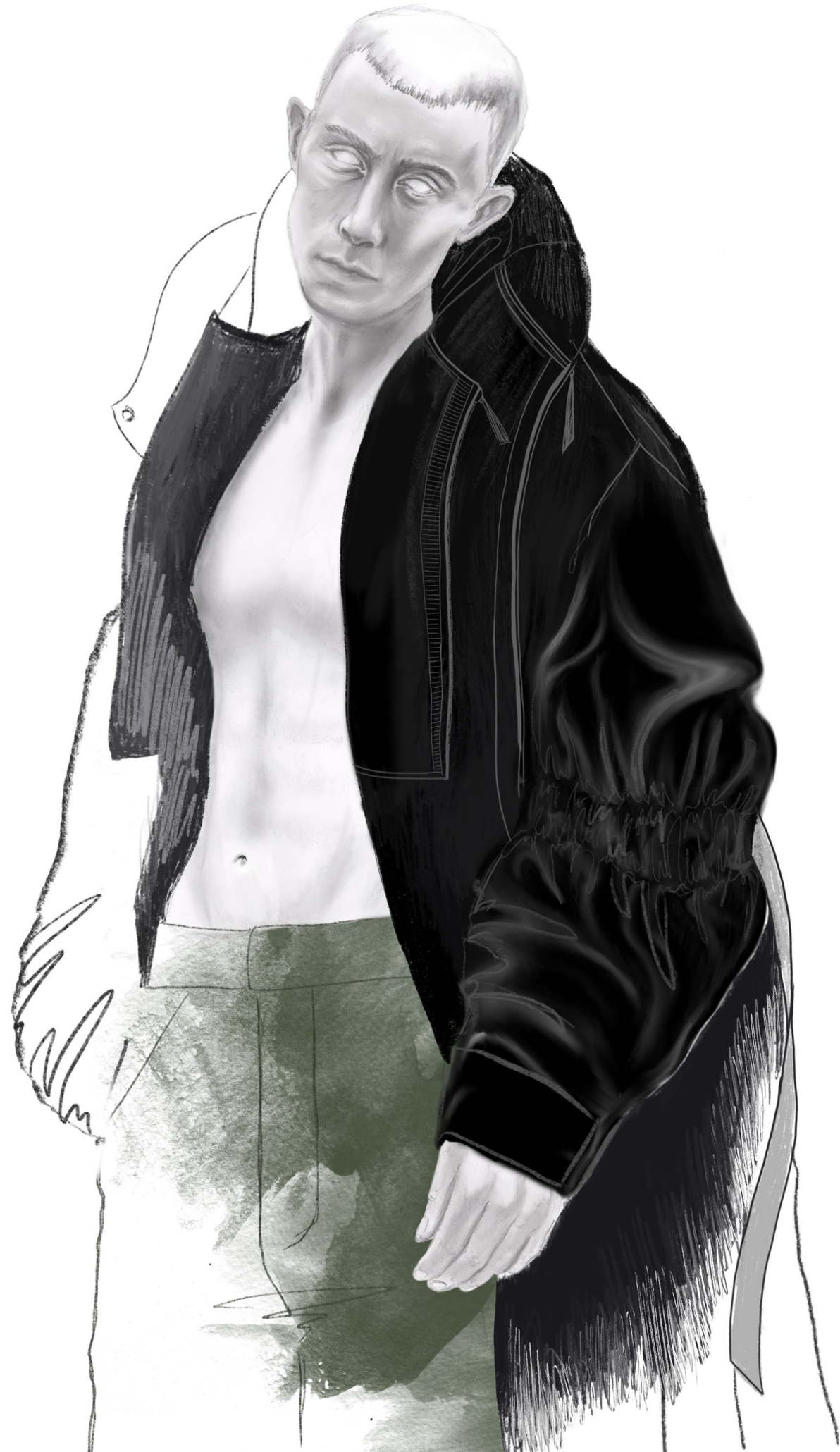
лишнее
лишнее

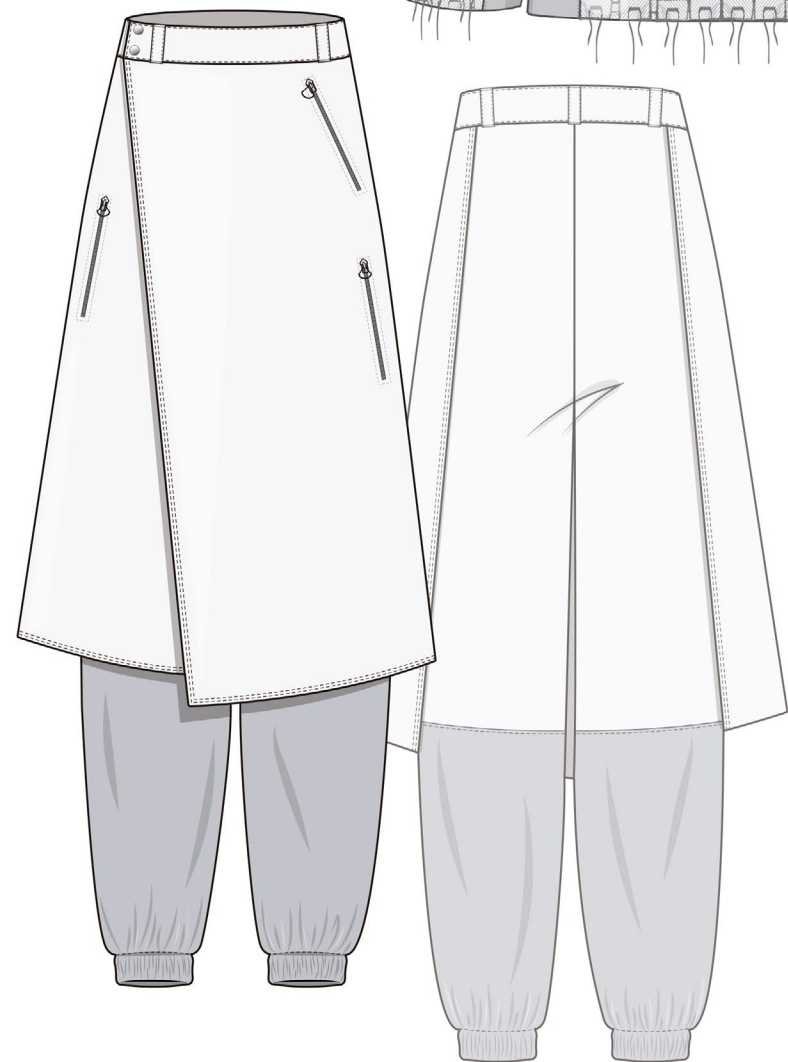
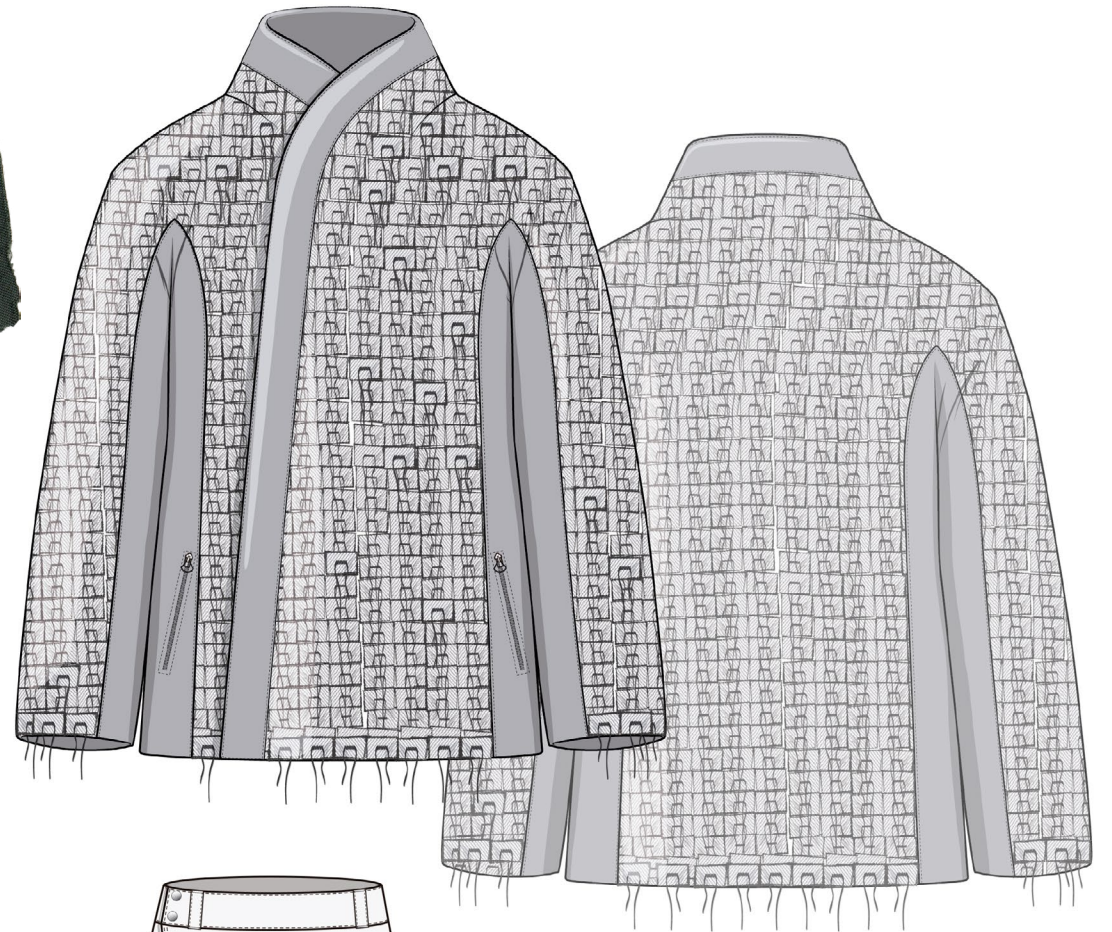










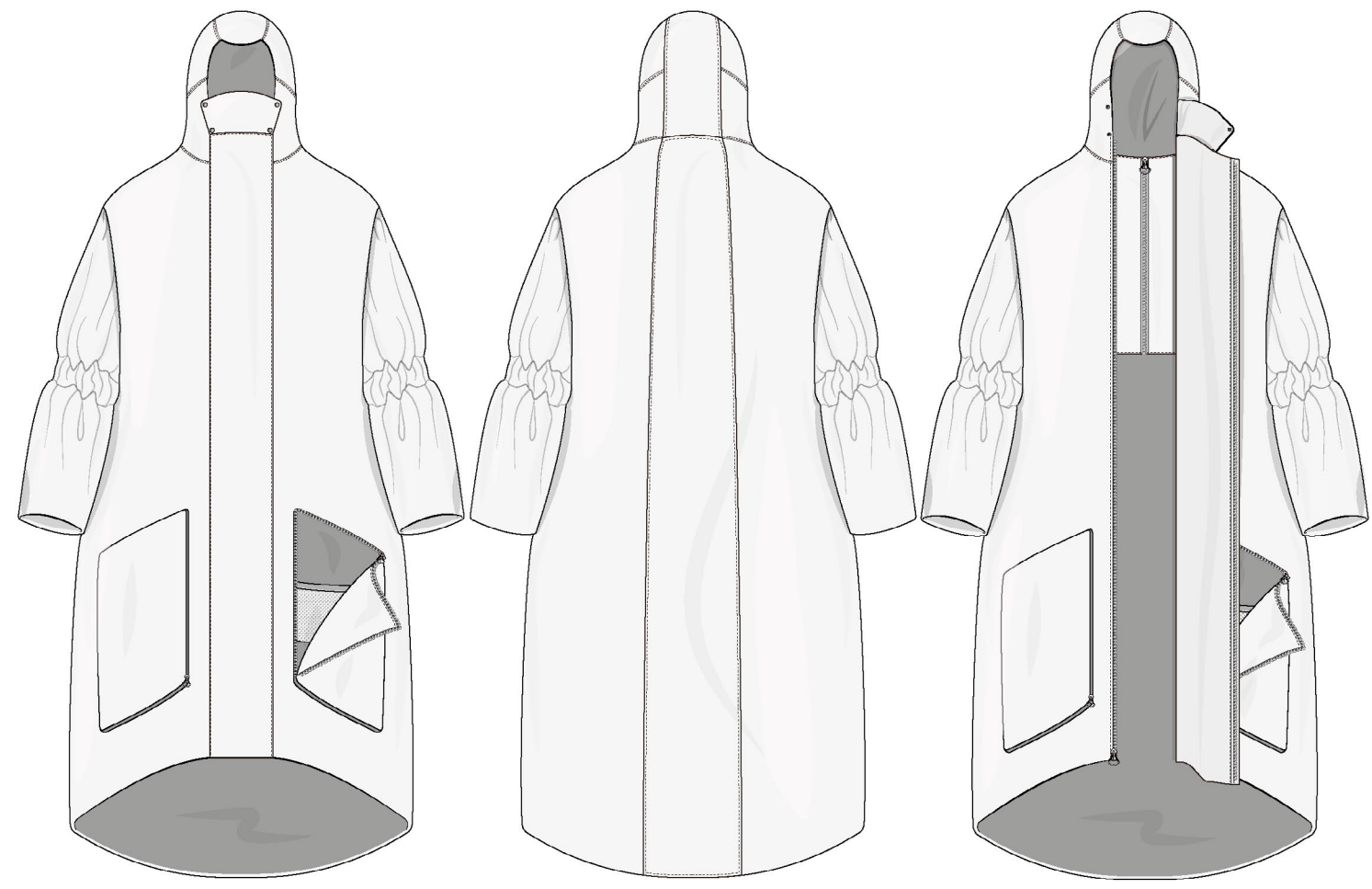
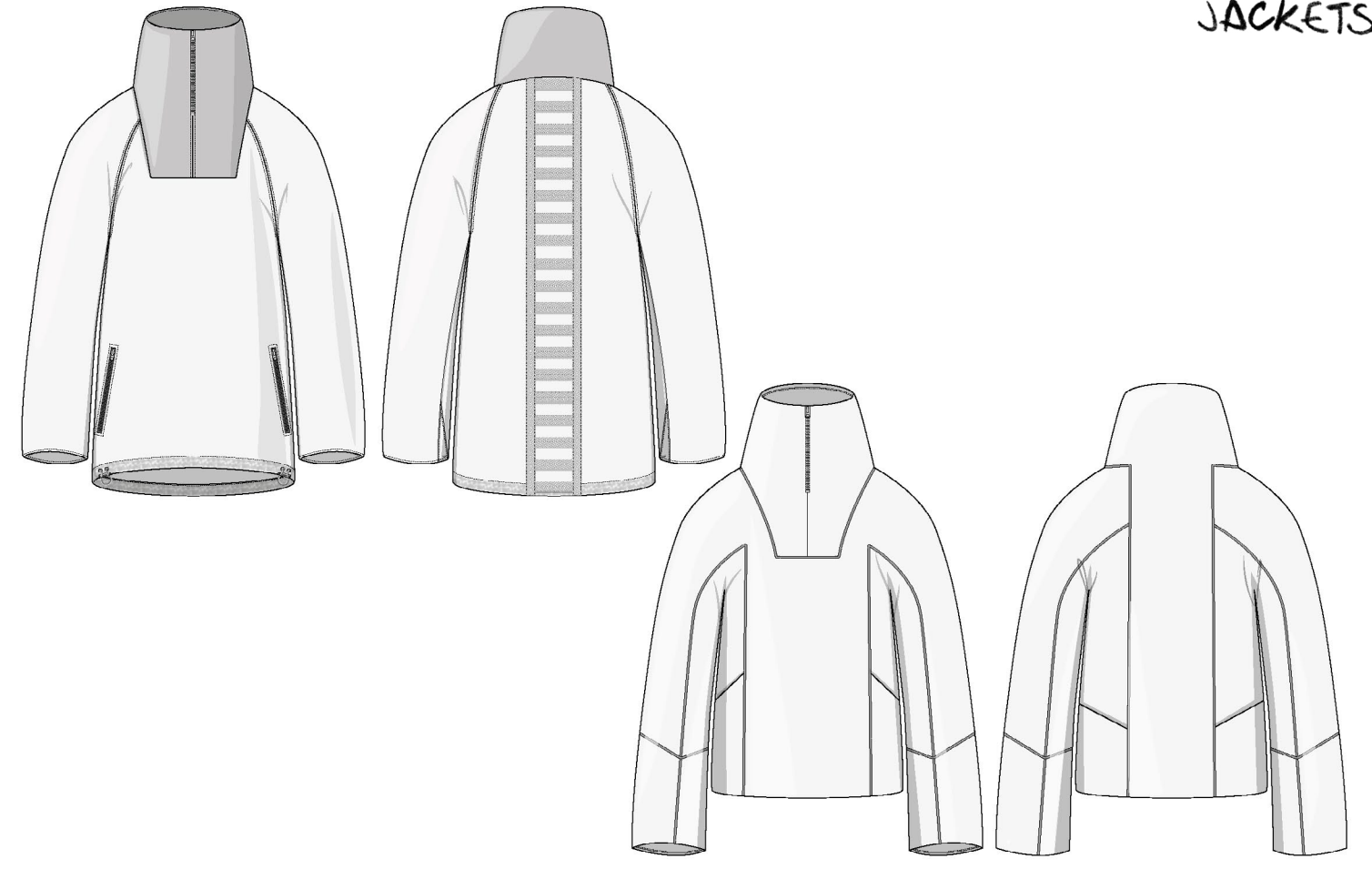






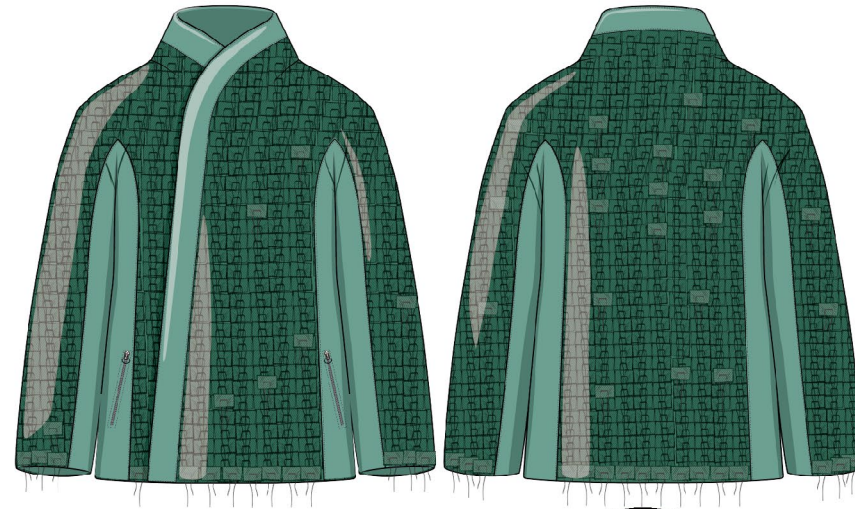
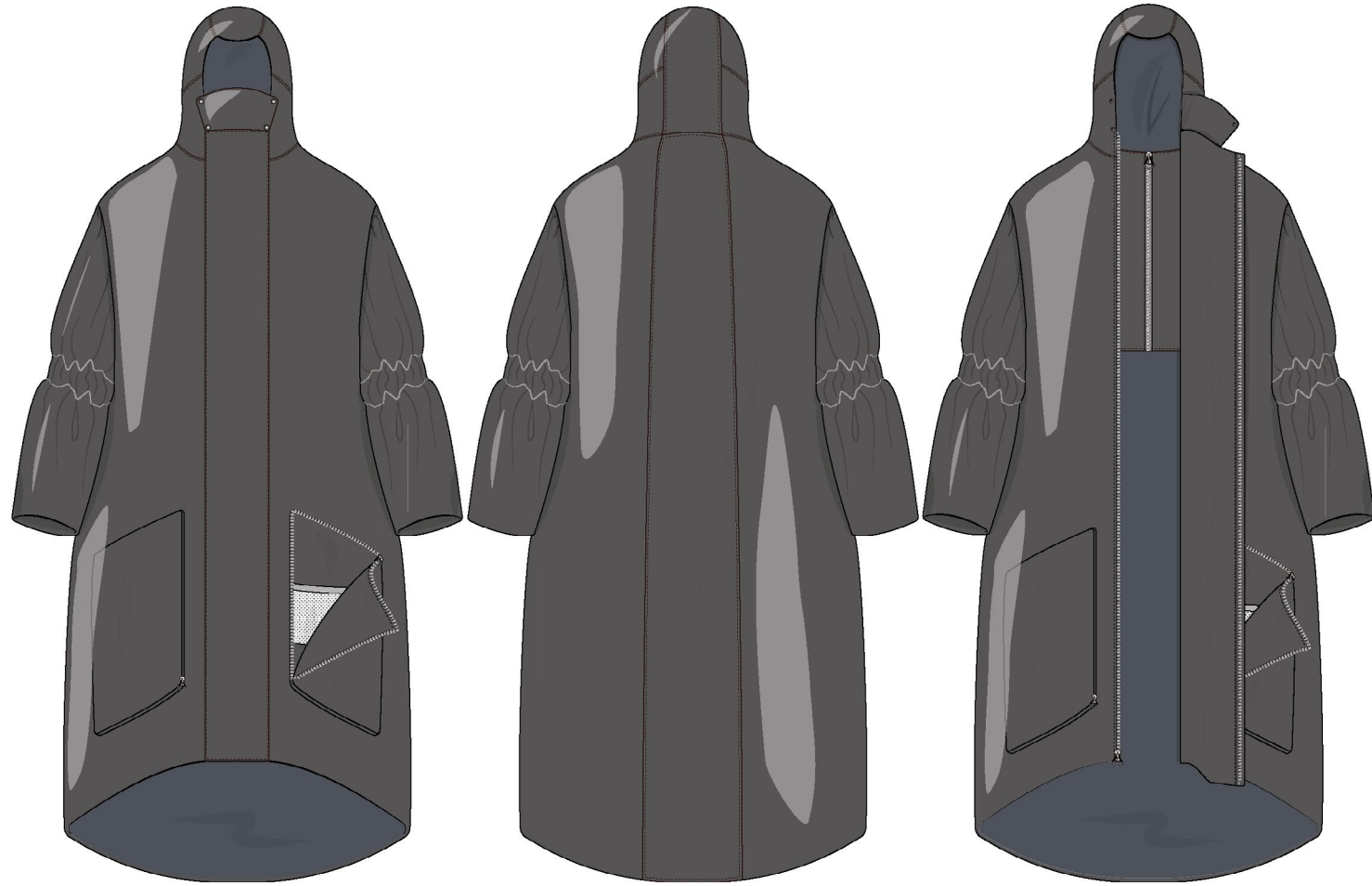
COATS/PARKAS

JACKETS

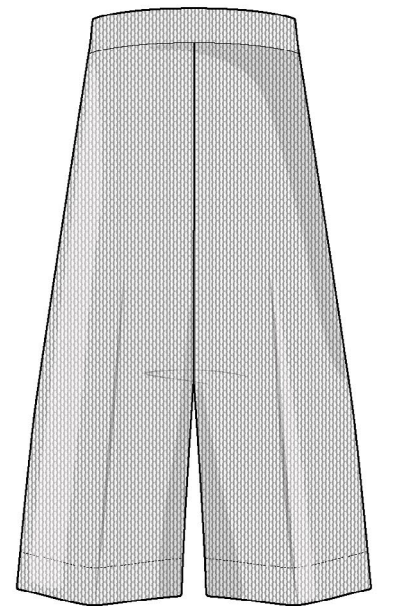
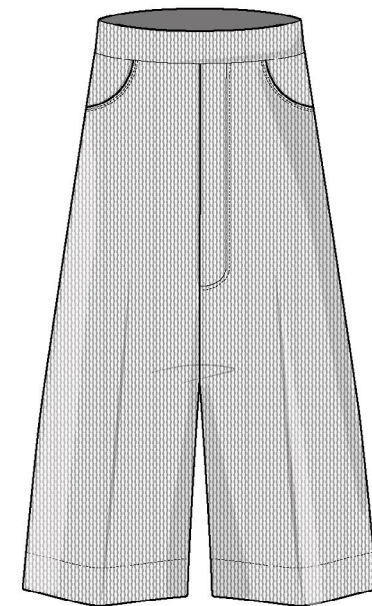
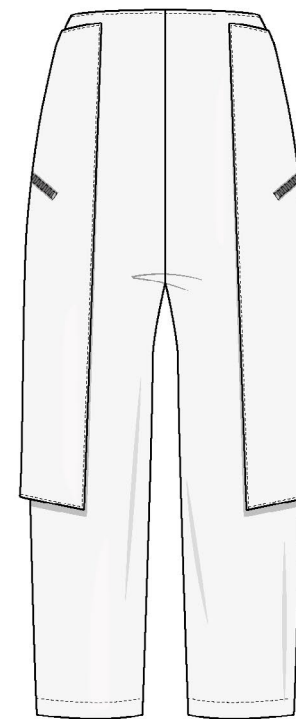
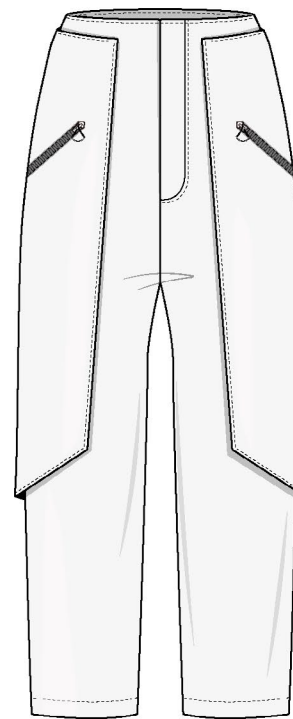
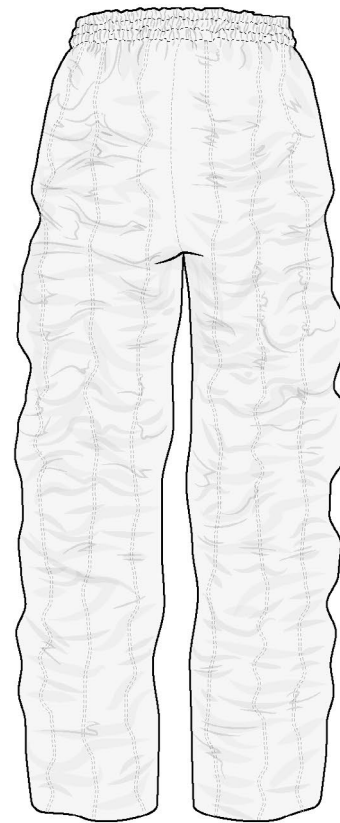
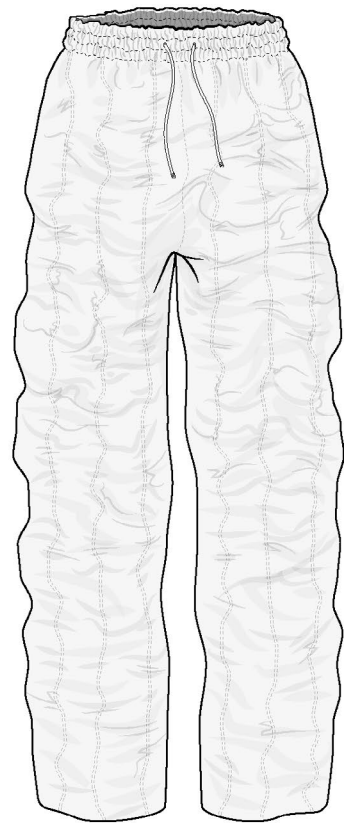
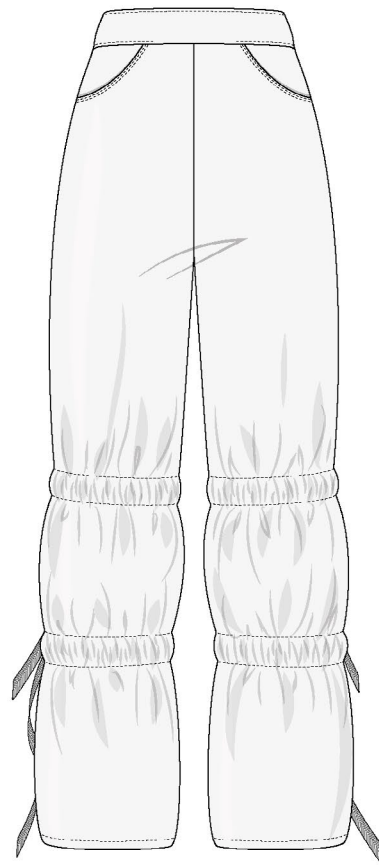
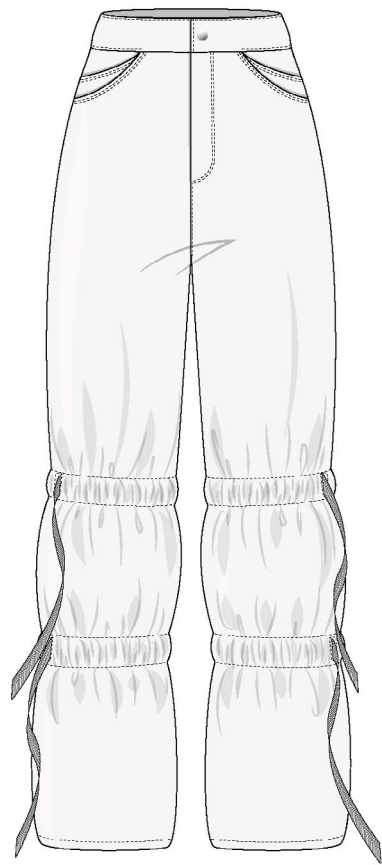
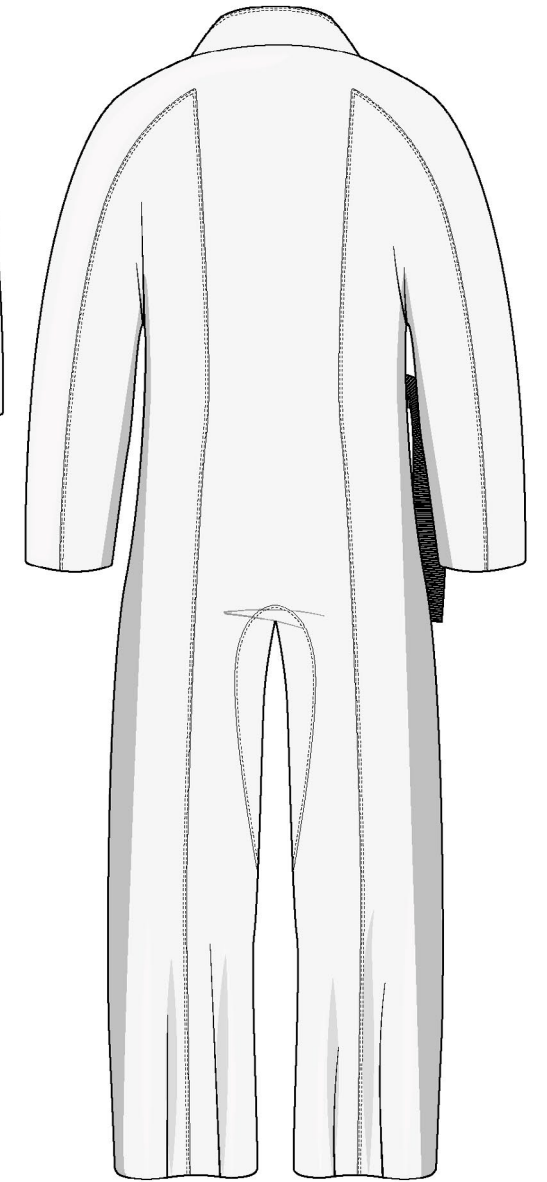
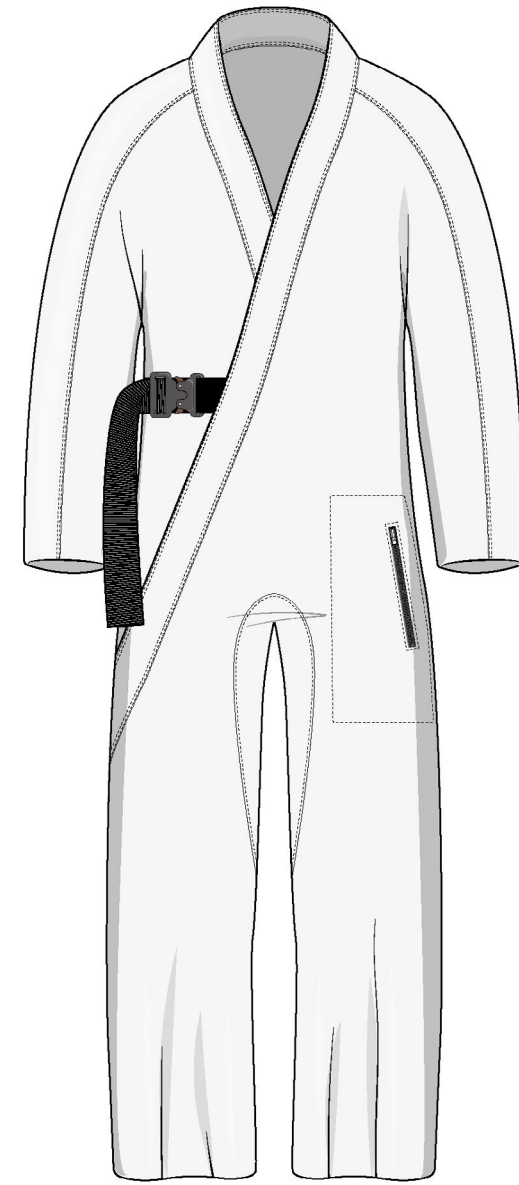
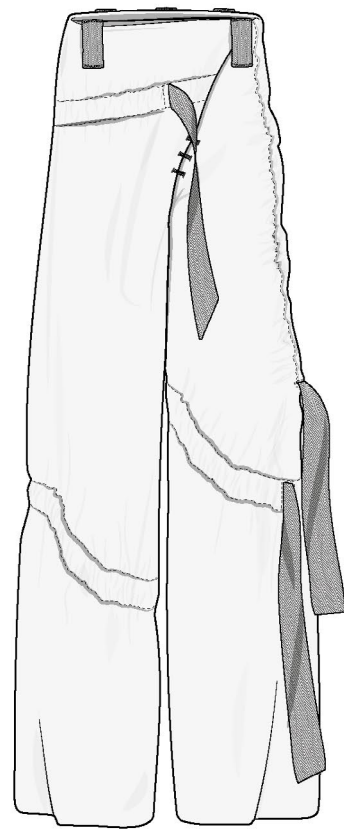
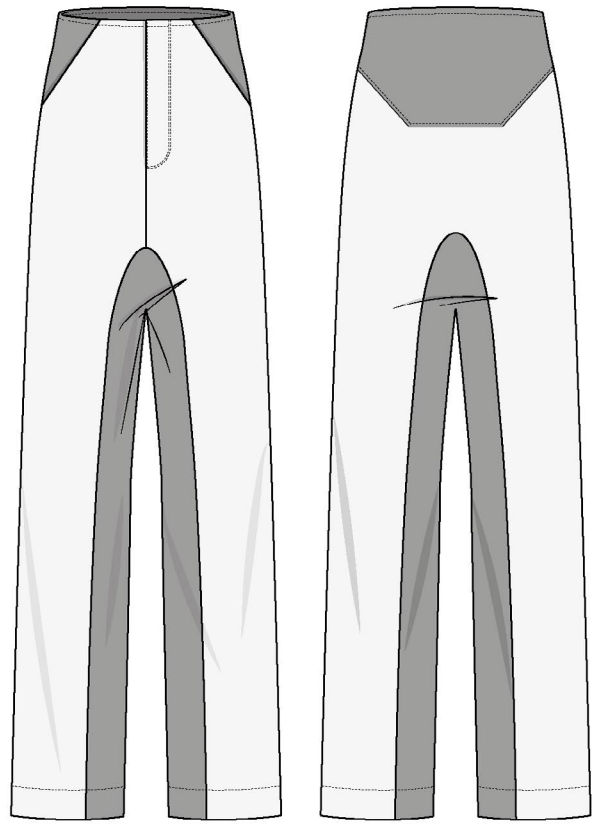


COATS/PARKAS

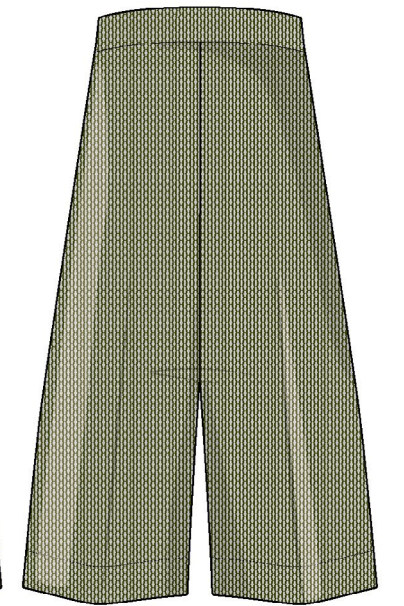
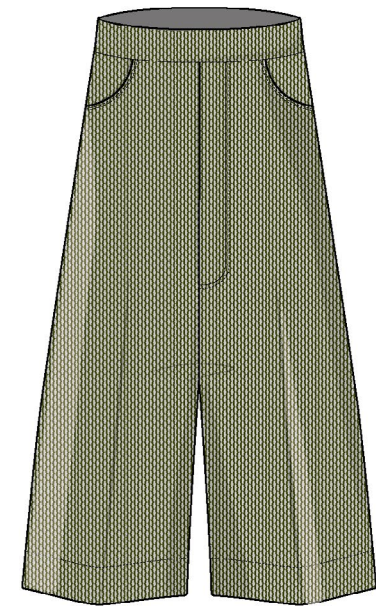
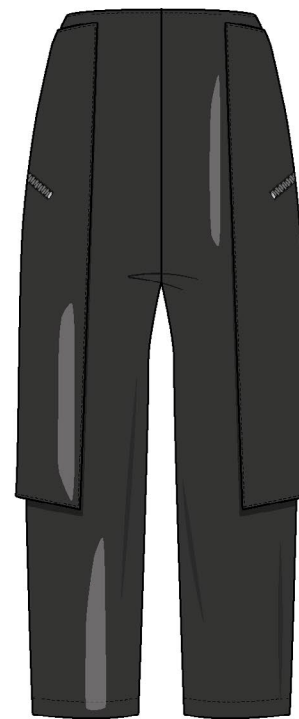
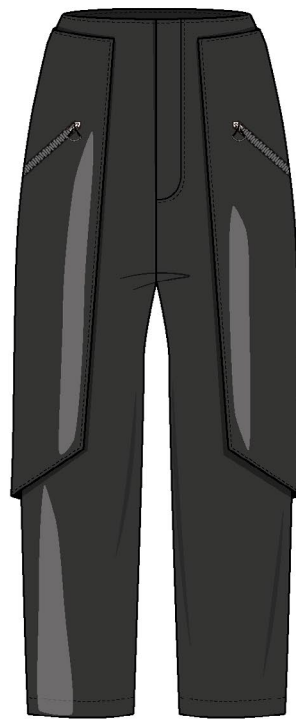
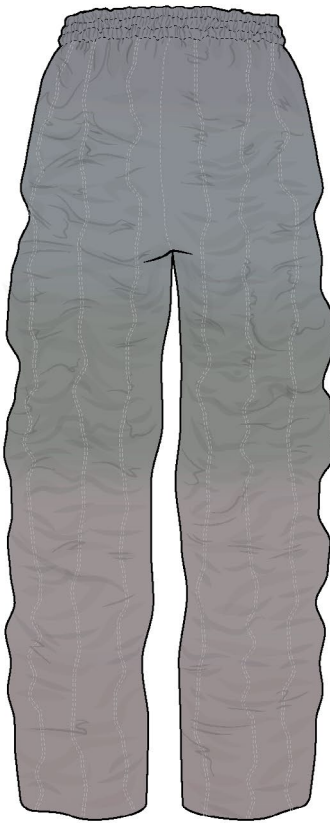
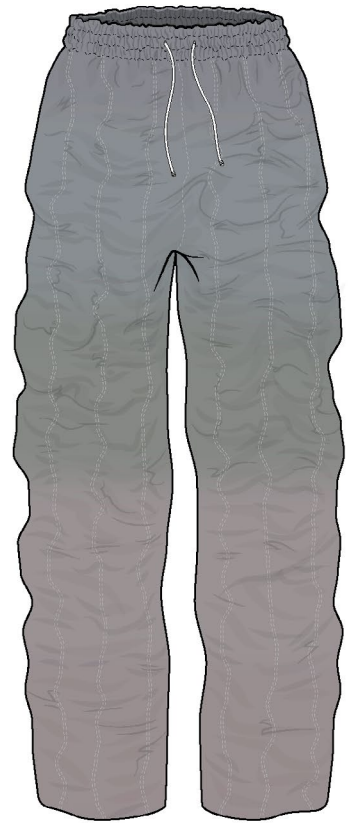
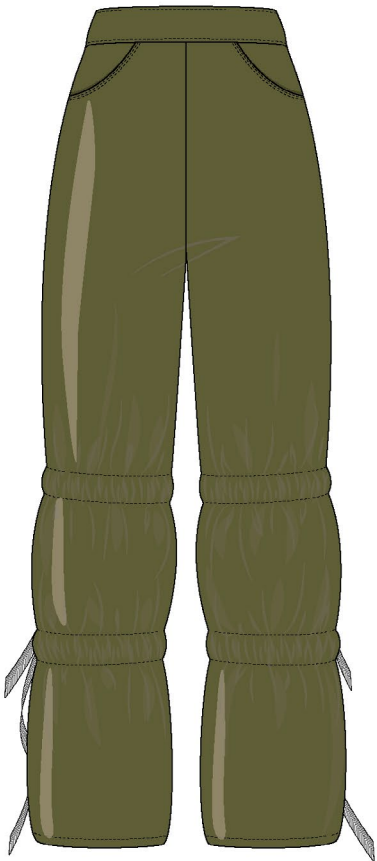
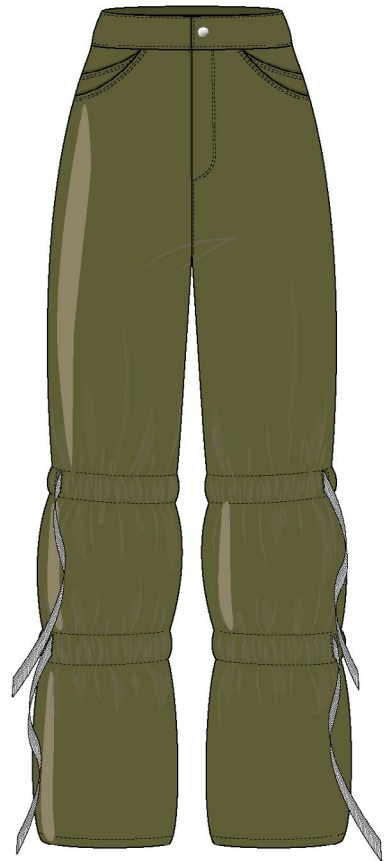
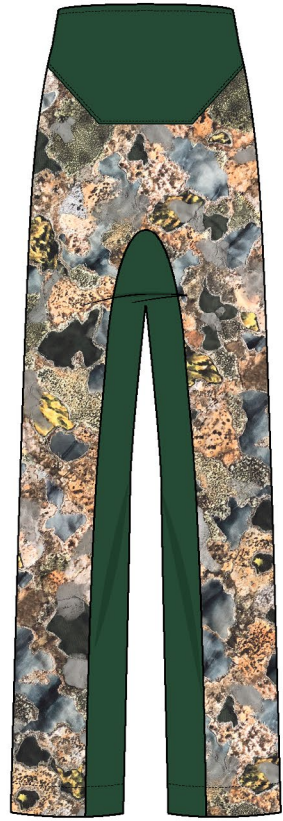
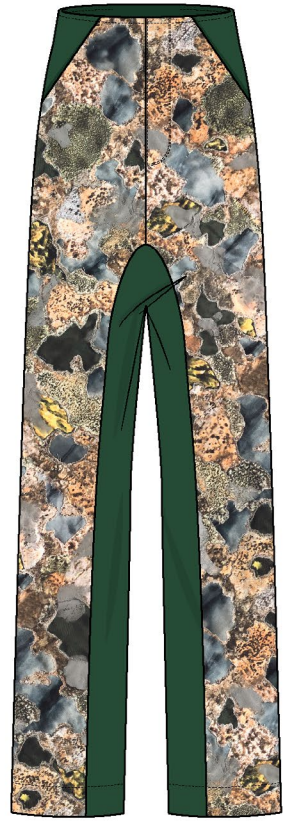
JACKETS



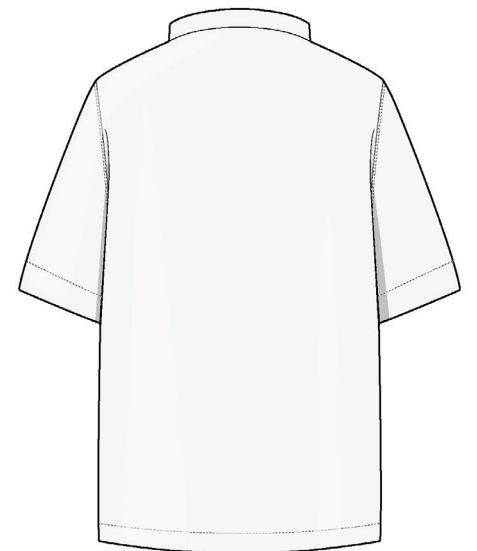
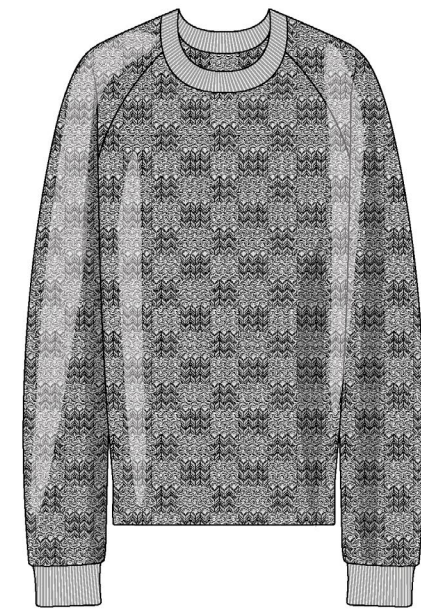
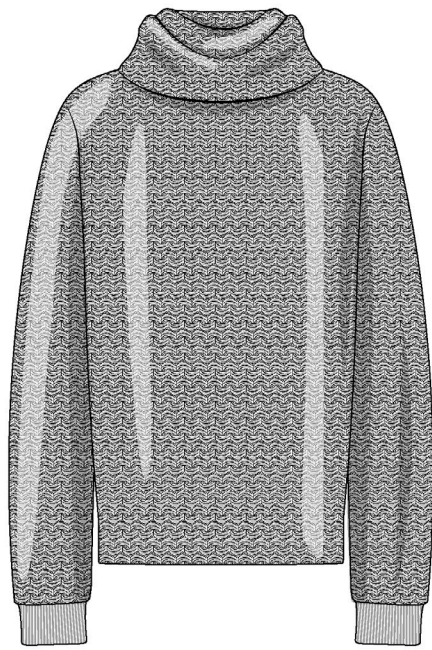
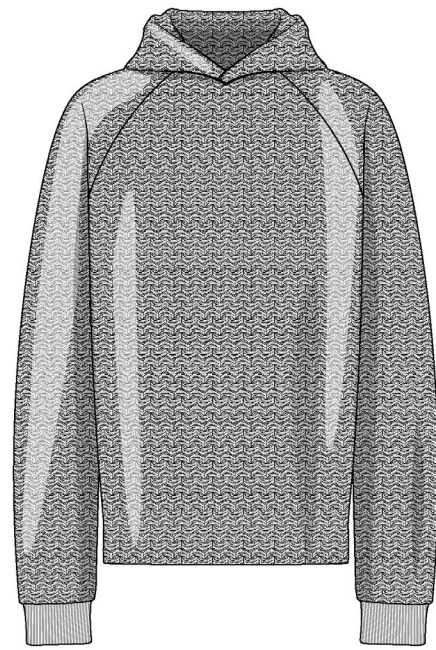
PANTS



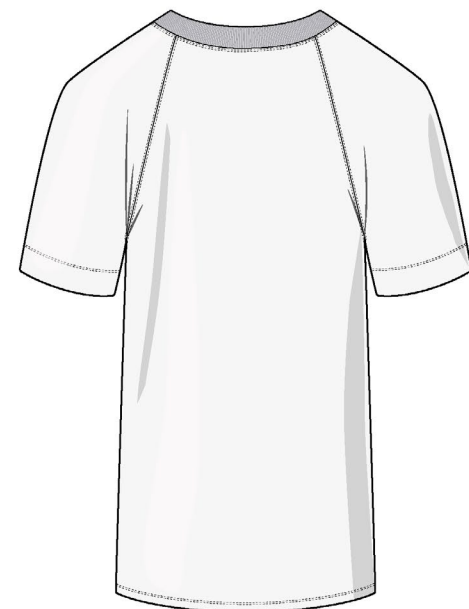
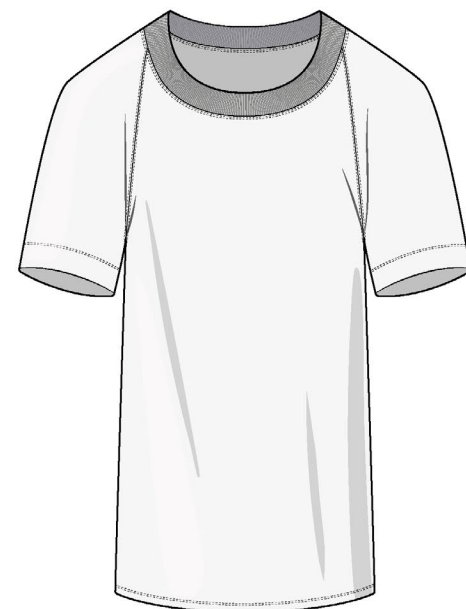
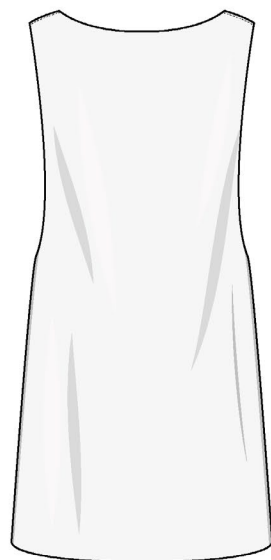
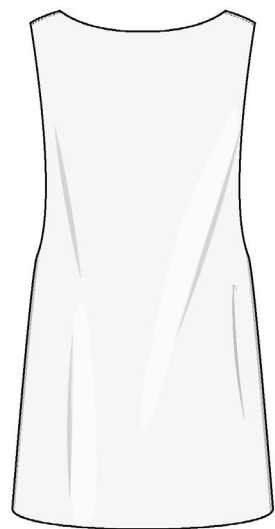
PANTS



KNITWEAR



SHIRTS



JERSEY

KNITWEAR

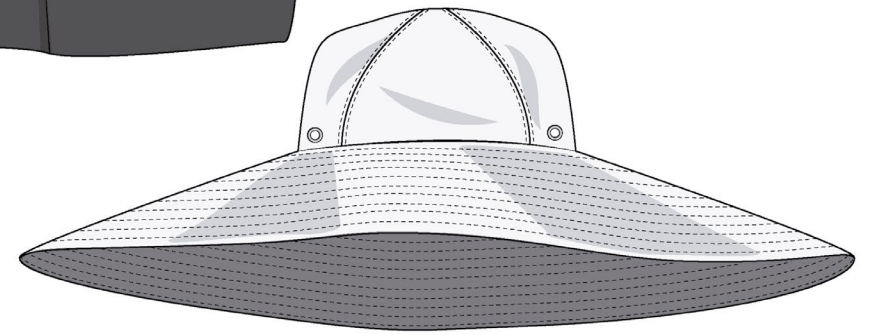
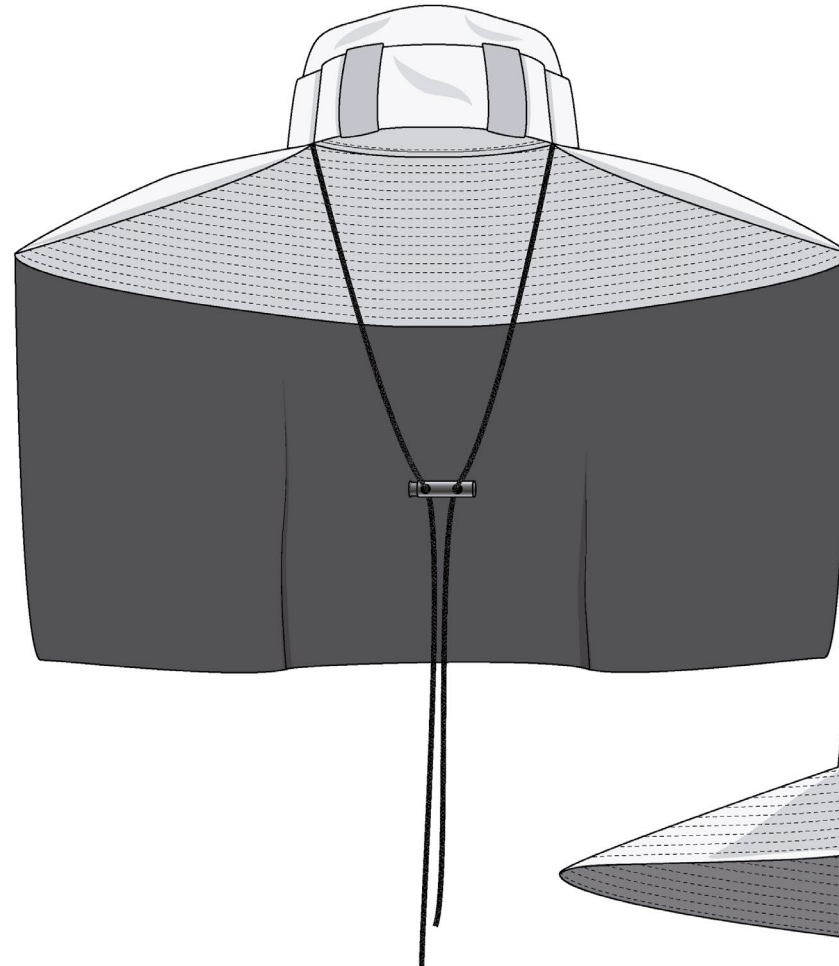
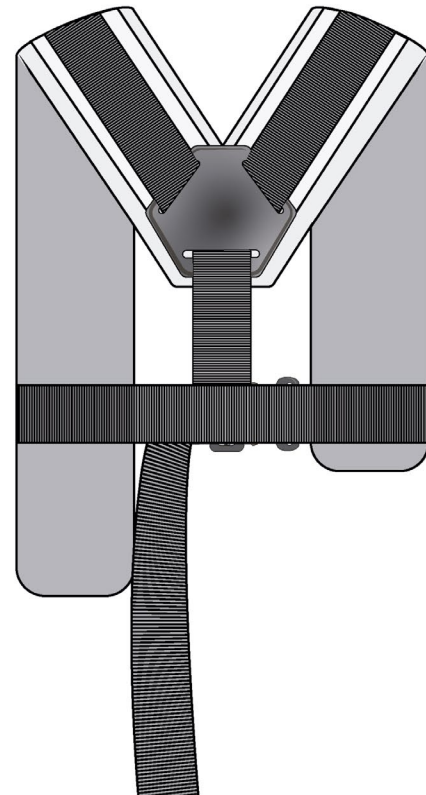
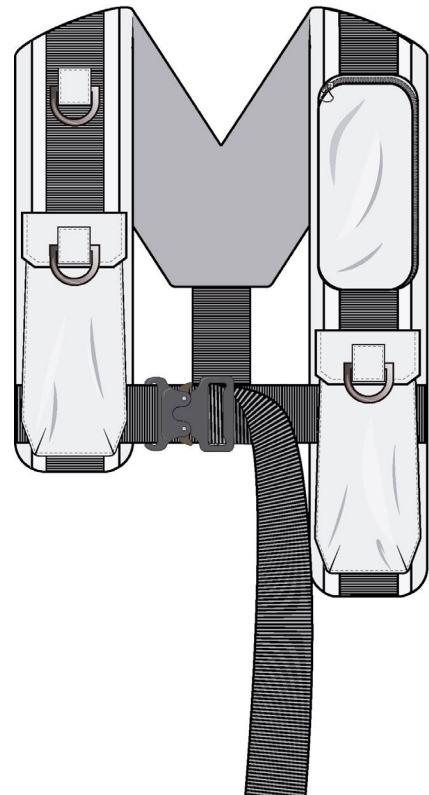
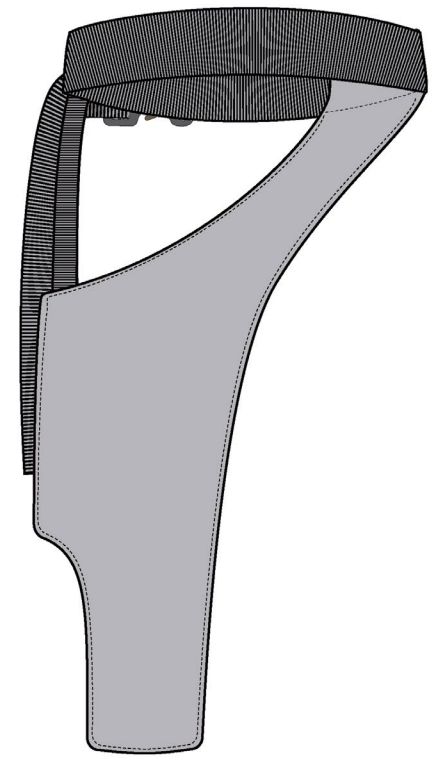
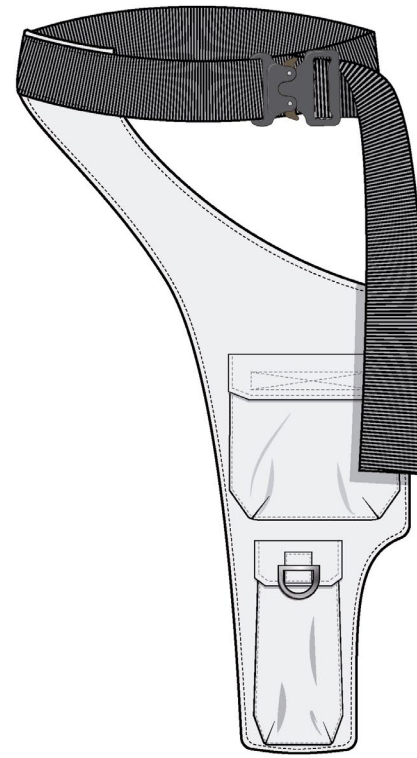
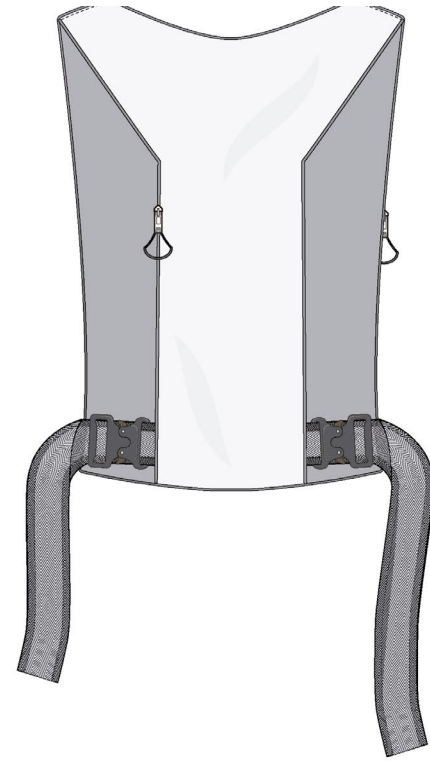
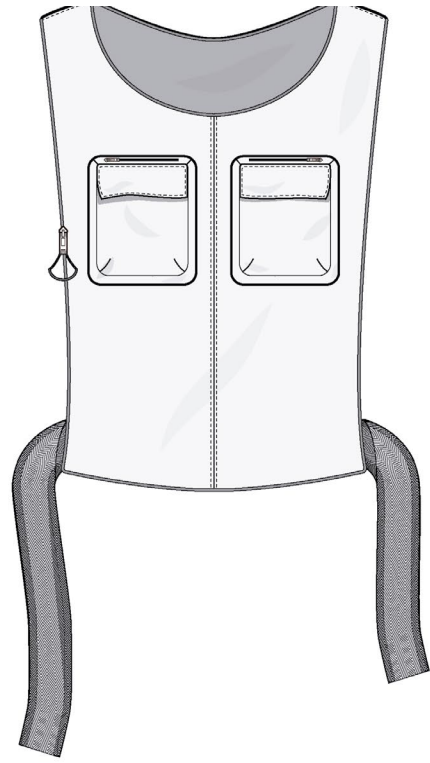


SHIRTS

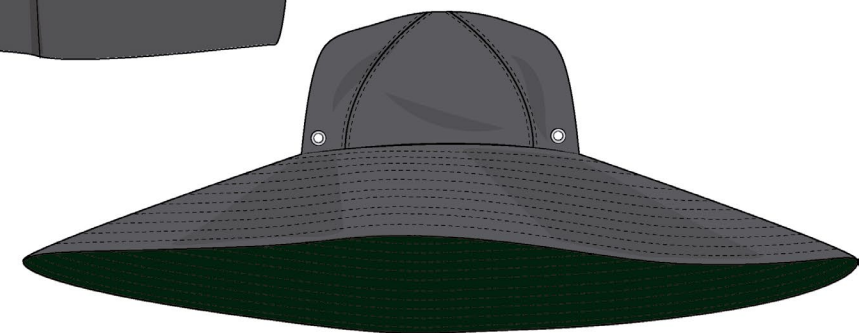
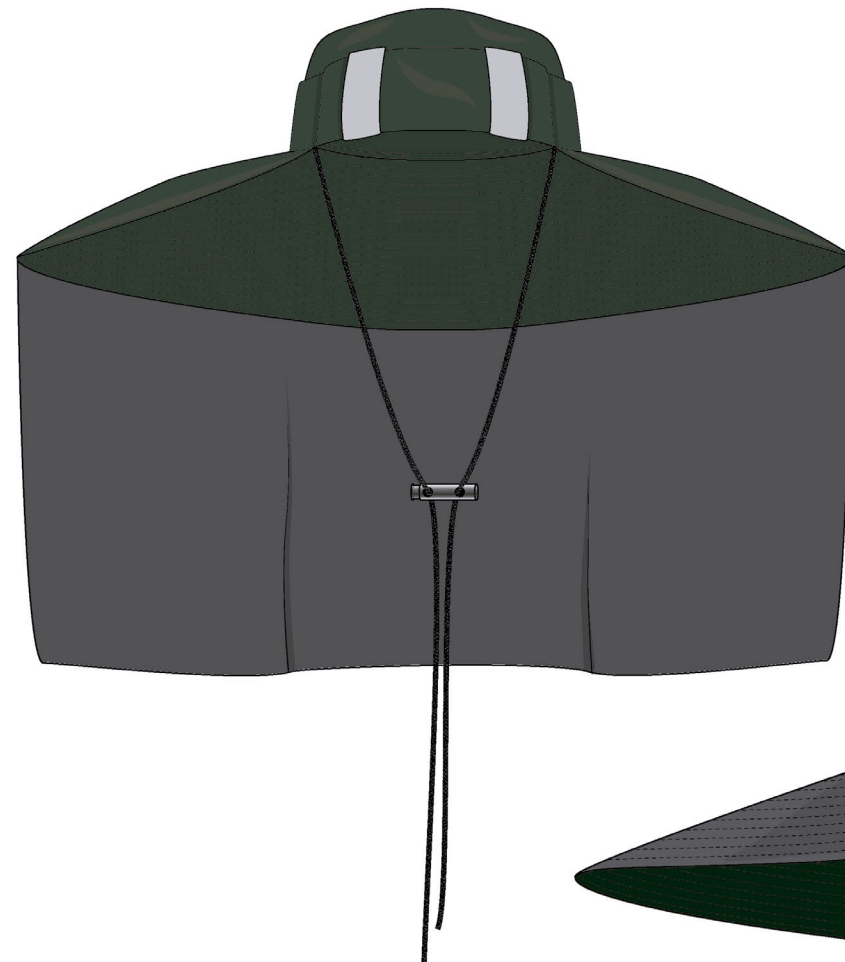
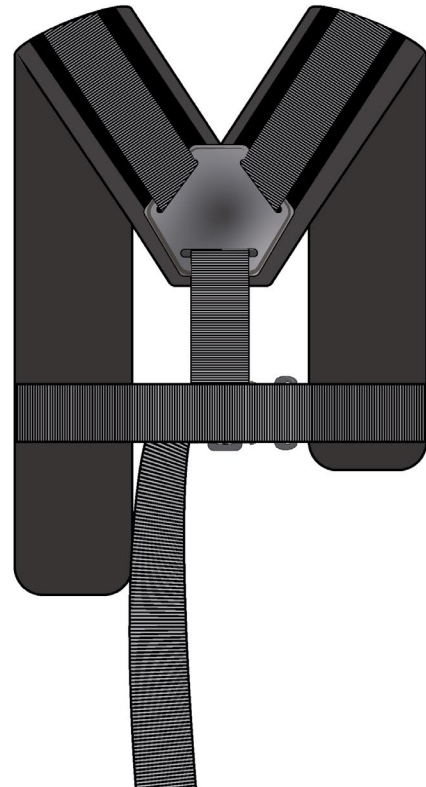
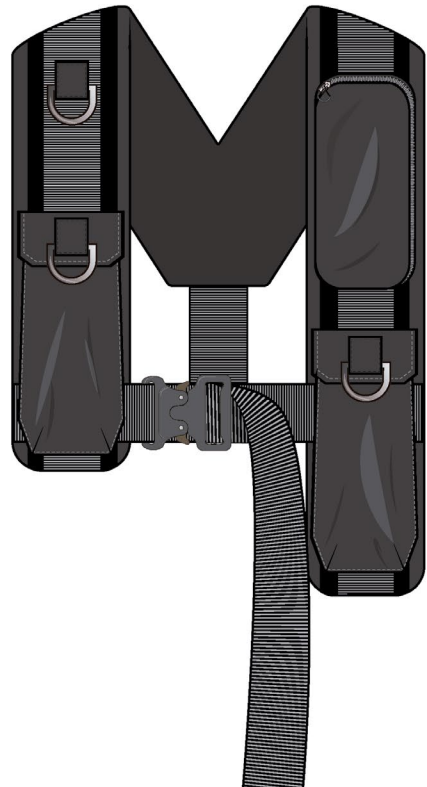
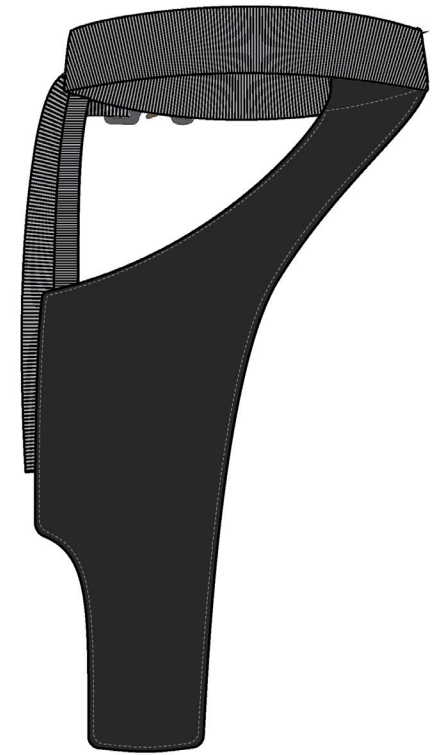
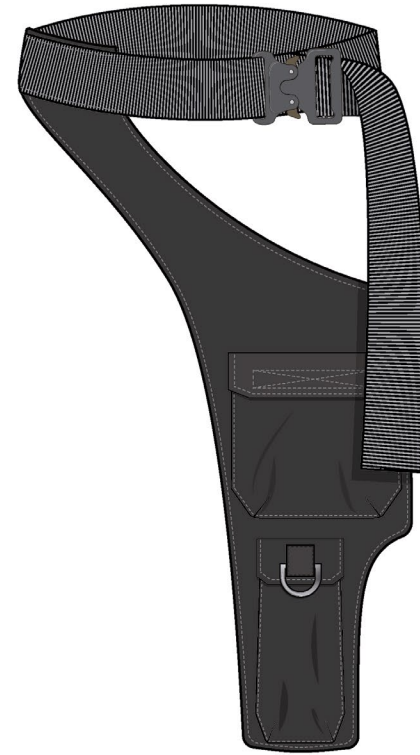


JERSEY

ACCESSORIES



ACCESSORIES























dalitmargarita@gmail.com