

-A

-ARAN-

-ZAZU-

pastore
lemon drop
12-8736 tex

Pastore
Peringue
12-8732 tex

Pastore
oil blue
12-5131 tex

Pastore
lemon grass
12-8626 tex

Pastore
coral almond
12-2245 tex



popelin algodao

seersucker





Pantone
aluminum blue
28-4005 tpx

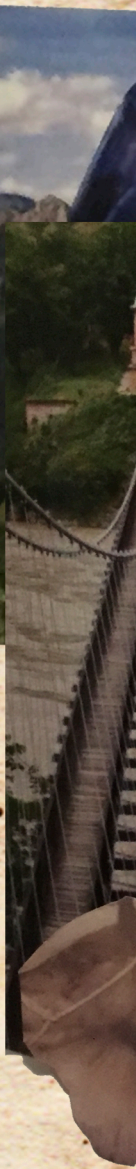
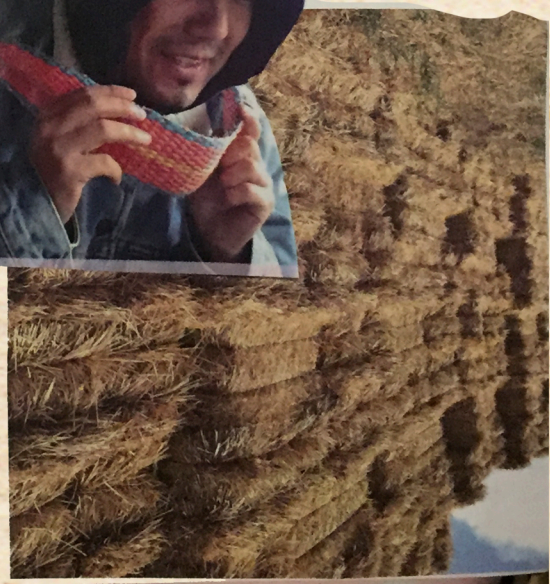
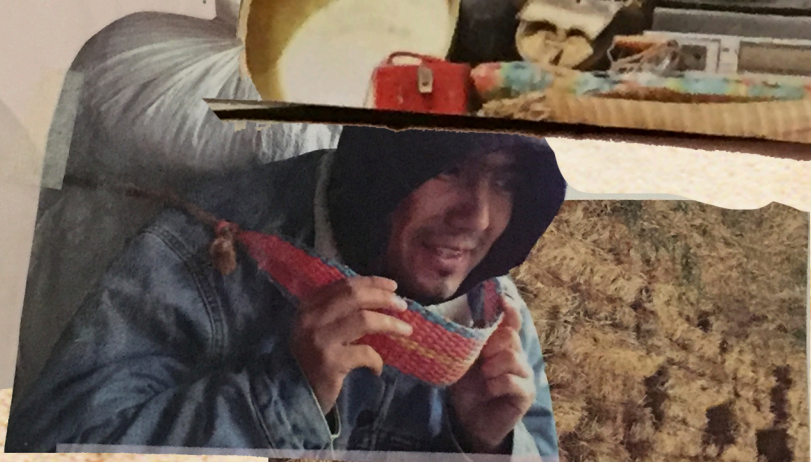
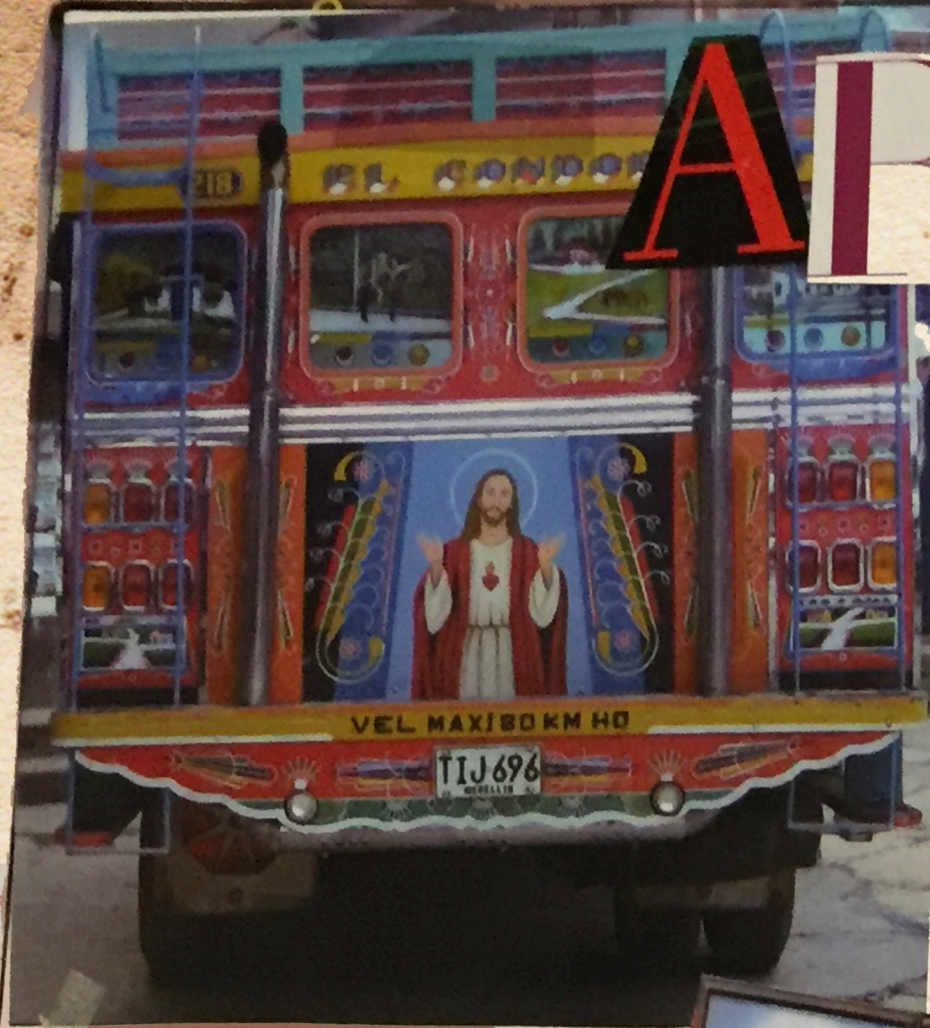
Pantone
classic blue
4851 tpx

Pantone
ink of blue
13-4001tp

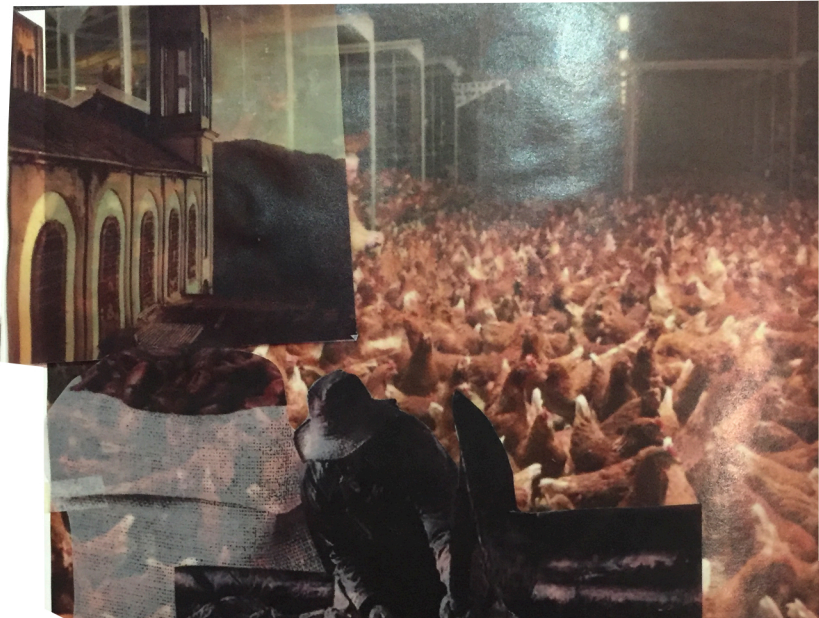
popelin algodón



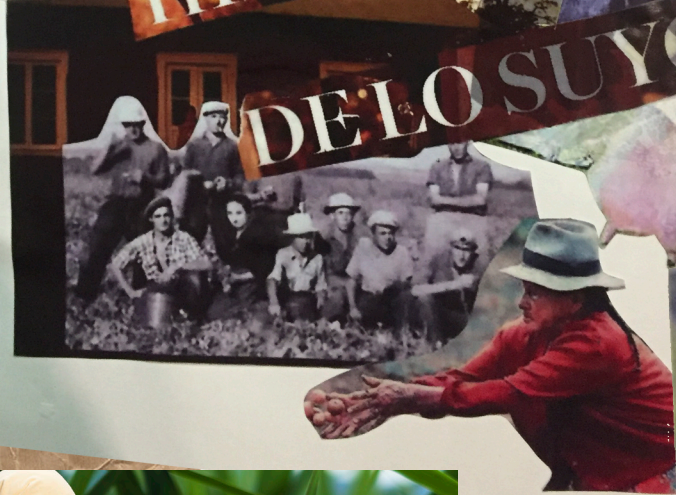
ARANZAZU







HISTORIA DE LO SUYO



10. ...
 11. ...
 12. ...
 13. ...
 14. ...
 15. ...
 16. ...
 17. ...
 18. ...
 19. ...
 20. ...
 21. ...
 22. ...
 23. ...
 24. ...
 25. ...
 26. ...
 27. ...
 28. ...
 29. ...
 30. ...
 31. ...
 32. ...
 33. ...
 34. ...
 35. ...
 36. ...
 37. ...
 38. ...
 39. ...
 40. ...
 41. ...
 42. ...
 43. ...
 44. ...
 45. ...
 46. ...
 47. ...
 48. ...
 49. ...
 50. ...
 51. ...
 52. ...
 53. ...
 54. ...
 55. ...
 56. ...
 57. ...
 58. ...
 59. ...
 60. ...
 61. ...
 62. ...
 63. ...
 64. ...
 65. ...
 66. ...
 67. ...
 68. ...
 69. ...
 70. ...
 71. ...
 72. ...
 73. ...
 74. ...
 75. ...
 76. ...
 77. ...
 78. ...
 79. ...
 80. ...
 81. ...
 82. ...
 83. ...
 84. ...
 85. ...
 86. ...
 87. ...
 88. ...
 89. ...
 90. ...
 91. ...
 92. ...
 93. ...
 94. ...
 95. ...
 96. ...
 97. ...
 98. ...
 99. ...
 100. ...





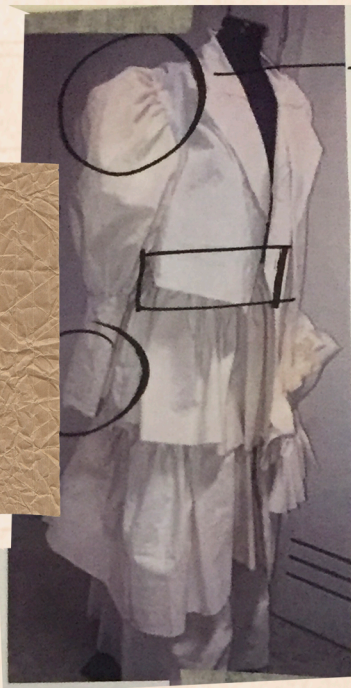






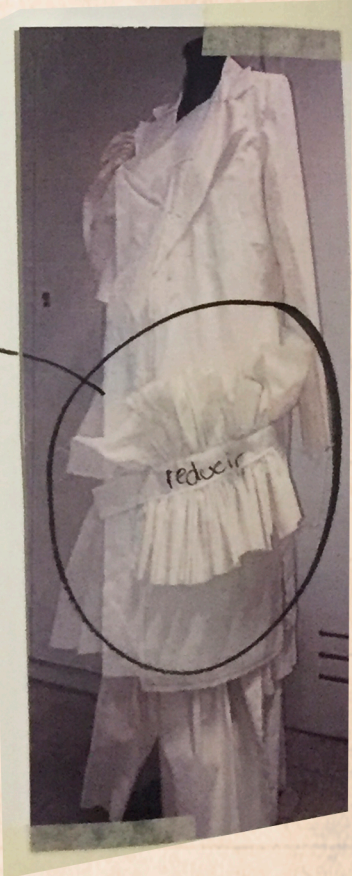




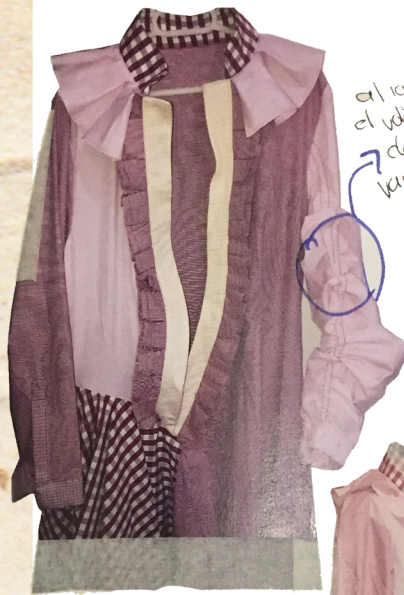


* reducir volumen a
codo de manga

* hacer volumen de
manga - 1. aumentar
- 2. emparejar







al igual que el volante en el lado derecho añadir vaina para funcionar



esta pieza necesita movimiento

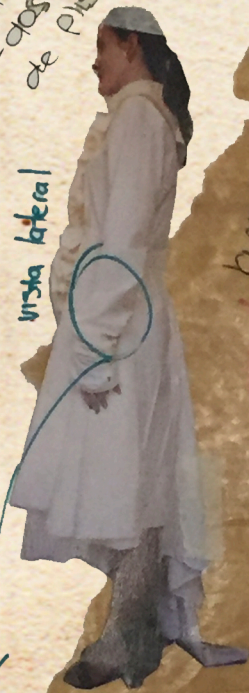


añadir volante adicional y sobre este la vaina
funcion: funcionar volantes



contar movimiento
-disculdo
-dos líneas de plisado

vista lateral



la manga necesita

ajuste medida

la manga debe funcionar más
- hacer patron mas largo

+ añadir vaina





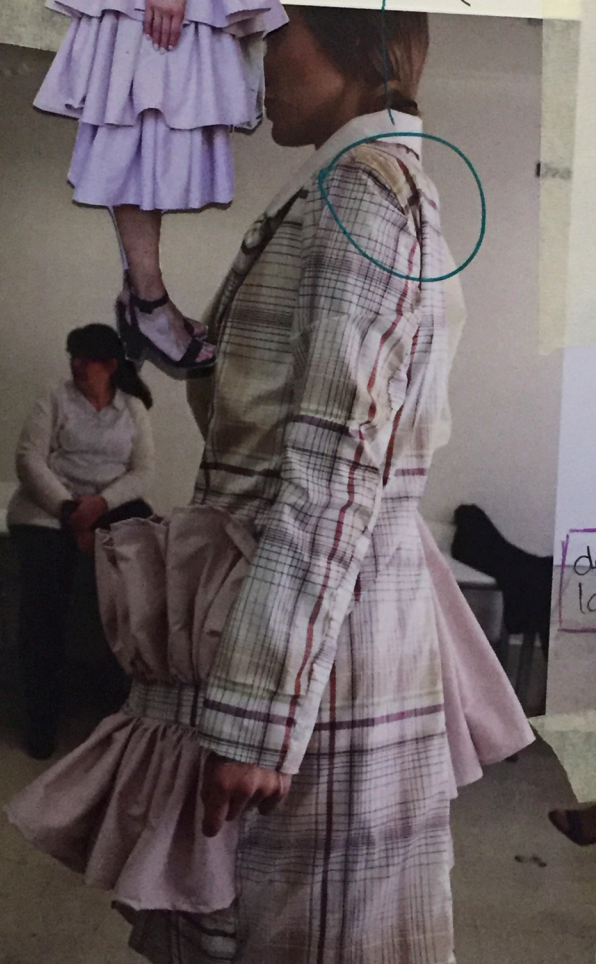
frontal



espalda



revisar
patron
manga



demasiado
largo



largo
falda

