

LOSS OF IDENTITY

# The New York Times

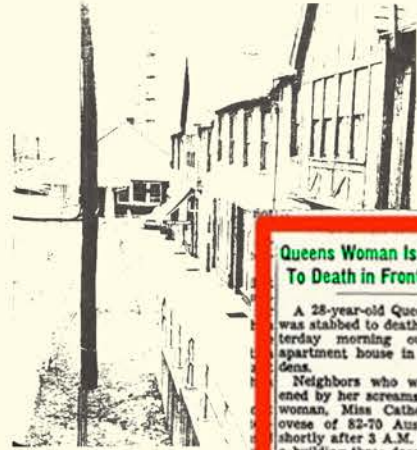
NEW YORK, FRIDAY, MARCH 27, 1964.

## Concept Collection

By GINEVRA REBECCA  
SANTOMAURO

In 1964, Queens New York, a young woman called Catherine Genovese (Kitty) was assaulted and stabbed various times in a thirty-minute time frame. During murder, 38 witnesses saw or heard the young woman being stabbed over and over again, but no one rescued her. The police were called after Kitty had already died. Psychologists developed the theory of diffusion of responsibility which demonstrates how people are not always inclined to help others, especially when they are aware that others are around. The presence of others means that the psychological costs associated with one's actions become shared and this allows the responsibility to shift from the individual to the group, becoming a shared burden between more individuals. To gain a wider view on the bystander effect I researched different psychological experiments which show how singular people lose their own identities when they are placed into groups, as well as showing how, when given an order from a superior, the responsibility shifts away from the individual. The first experiment I looked into was the Milgram experiment, which measured the participants' willingness to obey an authoritative figure who told them to give electric shocks to the patients. This was done to understand to which extent people would obey an instruction when it involved harming another person. The second study was the Stanford Prison Experiment, which investigated the psychological effects of bestowed power. In the experiment various students were picked and assigned to be either guards or prisoners. The result of this experiment showed how individuals immediately started to interpret their given roles

as the guards immediately began enforcing authoritarian measures and psychologically torturing the prisoners. At last I looked into different military groups to demonstrate how men and women from different religions and cultural backgrounds are able to put aside their personal ideologies, beliefs and identities and become part of something else. When the group is given an order they do so, by sharing the burden of their actions between the group and their superiors, they are able to take specific actions that alone they would not take. This brought me to look into old prison cells, military clothing and abandoned psychiatric hospitals. I got inspired by the decaying paint from old, ruined walls and used it as a base for my prints, given that my concept revolves around the human loss of identity I associated the decaying paint and gradual loss of value with one's loss of identity. Many of the pictures of these abandoned sites still show objects used from the guards both in the abandoned hospitals and in the prison. Straitjackets, handcuffs, prison uniforms and military uniforms were the base of my silhouette, as well as the base of my fabric choice. My whole collection is made only from cottons, as most of the garments which inspired me were made out of old canvas-like fabric. The choice of geometrical prints also came from one of the images of an abandoned hospital which had a very geometrical pavement. Thus, giving me the idea of mixing prints that only had texture and contrasting geometric prints. The color palette was very distinct, I decided not to go with the obvious dark and opaque colors present in most of the images but with a bright and colorful palette that represents my personal style. Some of the colors came from wallpapers and ceilings of some of the establishments and I added a bright orange to give it a good contrast and light.



Reuter

### Queens Woman Is Stabbed To Death in Front of Home

A 28-year-old Queens woman was stabbed to death early yesterday morning outside her apartment house in Kew Gardens.

Neighbors who were awakened by her screams found the woman, Miss Catherine Genovese of 82-70 Austin Street, shortly after 3 A.M. in front of a building three doors from her home.

The police said that Miss Genovese had been attacked in front of her building and had run to where she fell. She had parked her car in a nearby lot, the police said, after having driven it from the Hollis bar where she was day manager.

The police, who spent the day searching for the murder weapon, interviewing witnesses and checking automobiles that had been seen in the neighborhood, said last night they had no clues.



## 37 Who Saw Murder Didn't Call the Police

### Apathy at Stabbing of Queens Woman Shocks Inspector

By MARTEN GANSBERG

For more than half an hour 38 respectable, law-abiding citizens in Queens watched a killer stalk and stab a woman in three separate attacks in Kew Gardens.

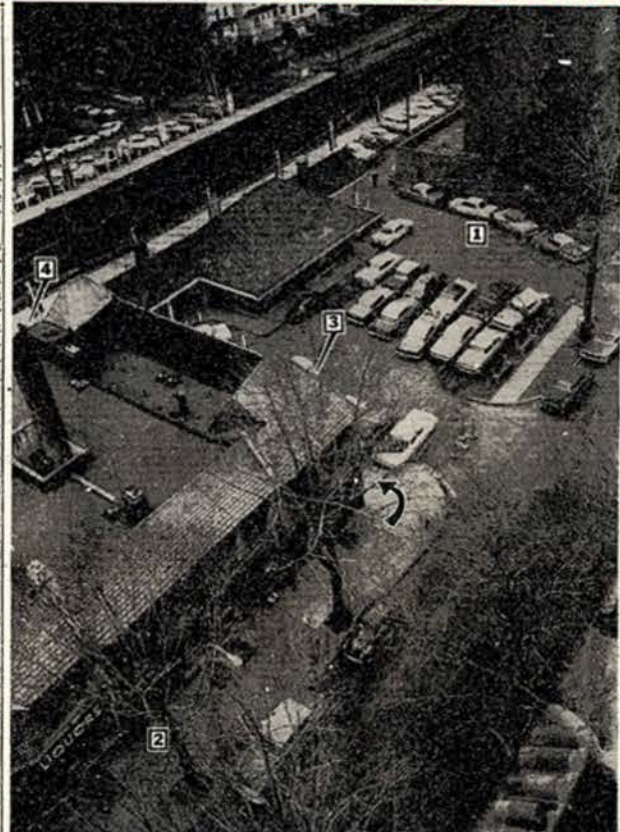
Twice the sound of their voices and the sudden glow of their bedroom lights interrupted him and frightened him off. Each time he returned, sought her out and stabbed her again. Not one person telephoned the police during the assault; one witness called after the woman was dead.

That was two weeks ago today. But Assistant Chief Inspector Frederick M. Lussen, in charge of the borough's detectives and a veteran of 25 years of homicide investigations, is still shocked.

He can give a matter-of-fact recitation of many murders. But the Kew Gardens slaying baffles him—not because it is a murder, but because the "good people" failed to call the police.

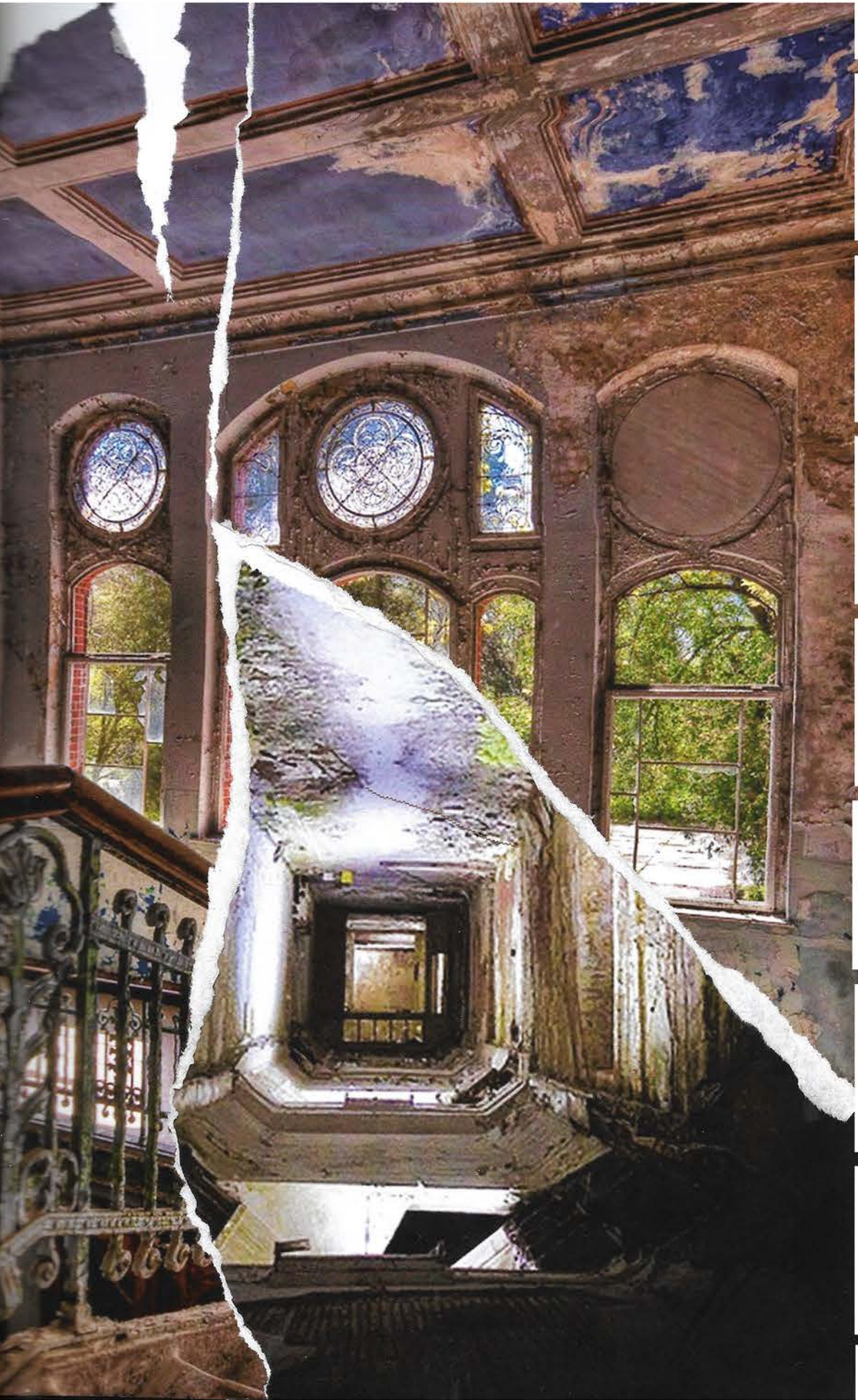
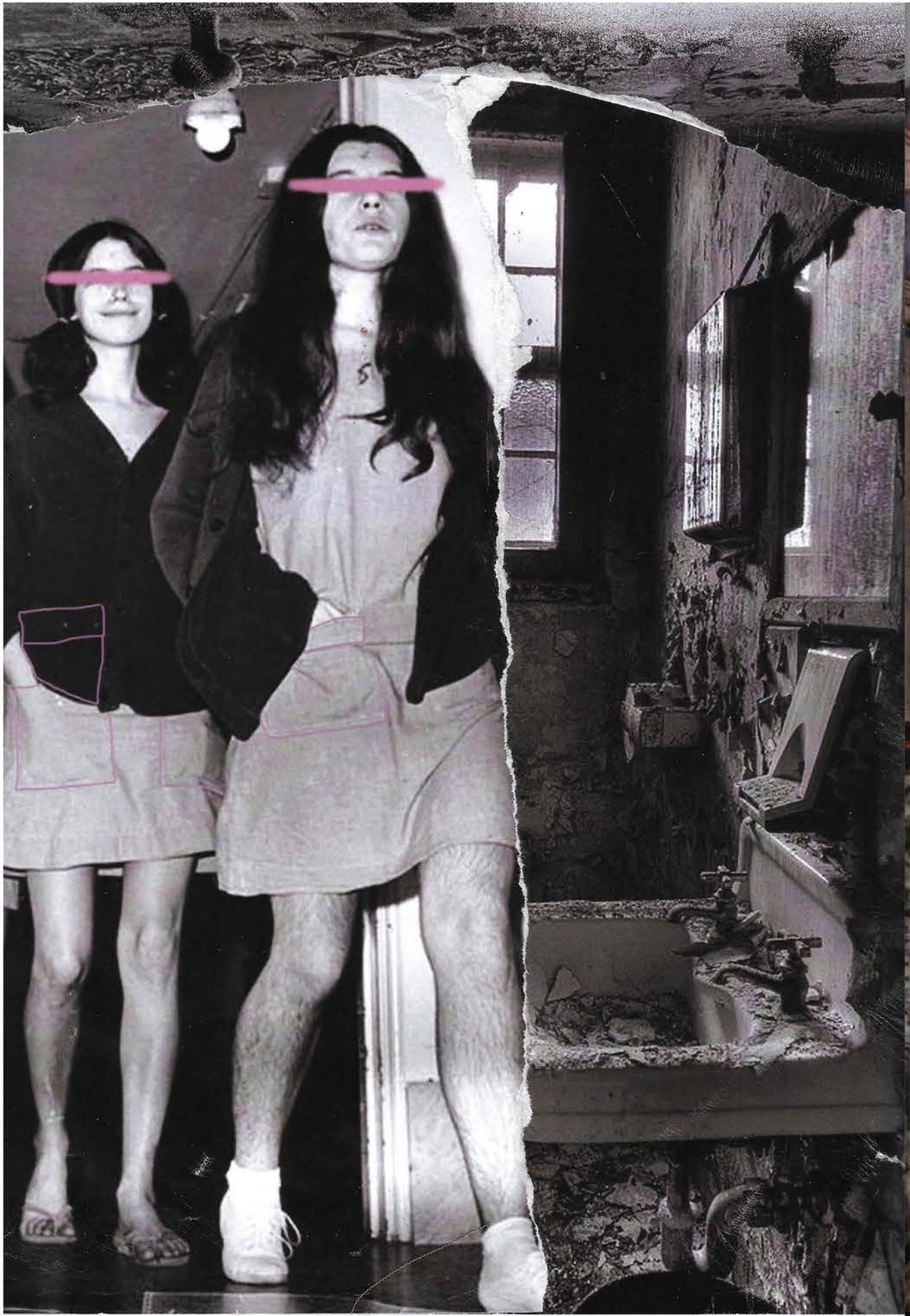
"As we have reconstructed the crime," he said, "the assailant had three chances to kill this woman during a 35-minute period. He returned twice to complete the job. If we had been called when he first attacked, the woman might not be dead now."

This is what the police say happened beginning at 3:20 A.M. in the staid, middle-class, tree-lined Austin Street area: Twenty-eight-year-old Catherine Genovese, who was called Kitty by almost everyone in the neighborhood, was returning



The New York Times (by Edward Steiner)  
At 3:20 A.M. on March 13, Miss Catherine Genovese drove into the parking lot at Kew Gardens railroad station and parked (1). Noticing a man in lot, she became nervous and headed along Austin Street toward a police telephone box. The man caught and attacked her (2) with a knife. She got away, but he attacked her again (3) and again (4).

Continued on Page 38, Column 1



PANTONE®  
11-0601 TCX  
Bright White

PANTONE®  
18-0312 TCX  
Deep Lichen Green

PANTONE®  
19-1532 TCX  
Rosewood

PANTONE®  
14-3612 TCX  
Orchid Bloom

PANTONE®  
19-3850 TCX  
Liberty

PANTONE®  
14-1904 TCX  
Pink Dolphin

PANTONE®  
14-2808 TCX  
Sweet Lilac

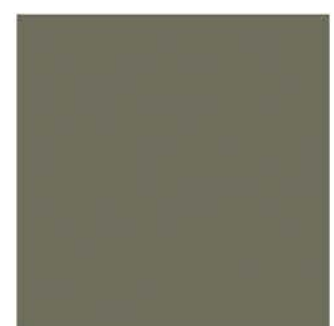
PANTONE®  
17-1349 TCX  
Exuberance

PANTONE®  
14-0226 TCX  
Opaline Green





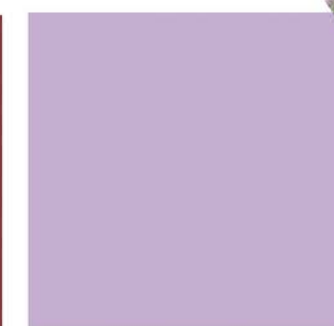
**PANTONE®**  
11-0601 TCX  
Bright White



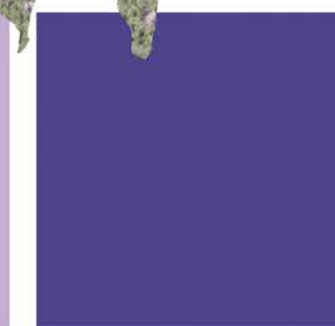
**PANTONE®**  
18-0312 TCX  
Deep Lichen Green



**PANTONE®**  
19-1532 TCX  
Rosewood



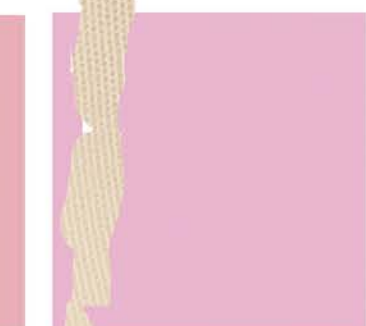
**PANTONE®**  
14-3612 TCX  
Orchid Bloom



**PANTONE®**  
19-3850 TCX  
Liberty



**PANTONE®**  
14-1904 TCX  
Pink Dolphin



**PANTONE®**  
14-2808 TCX  
Sweet Lilac



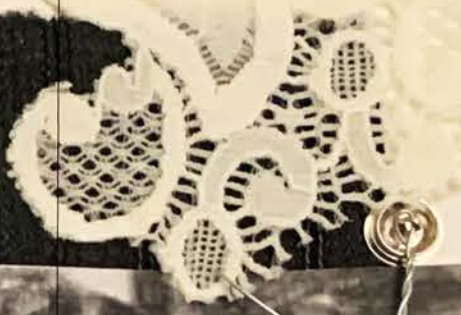
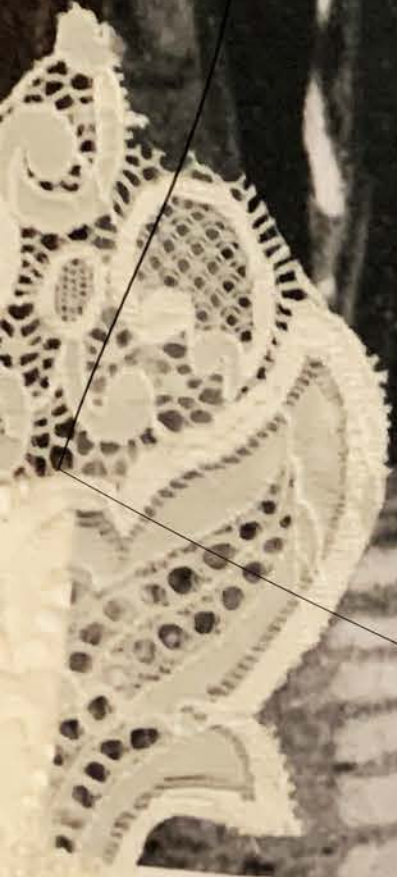
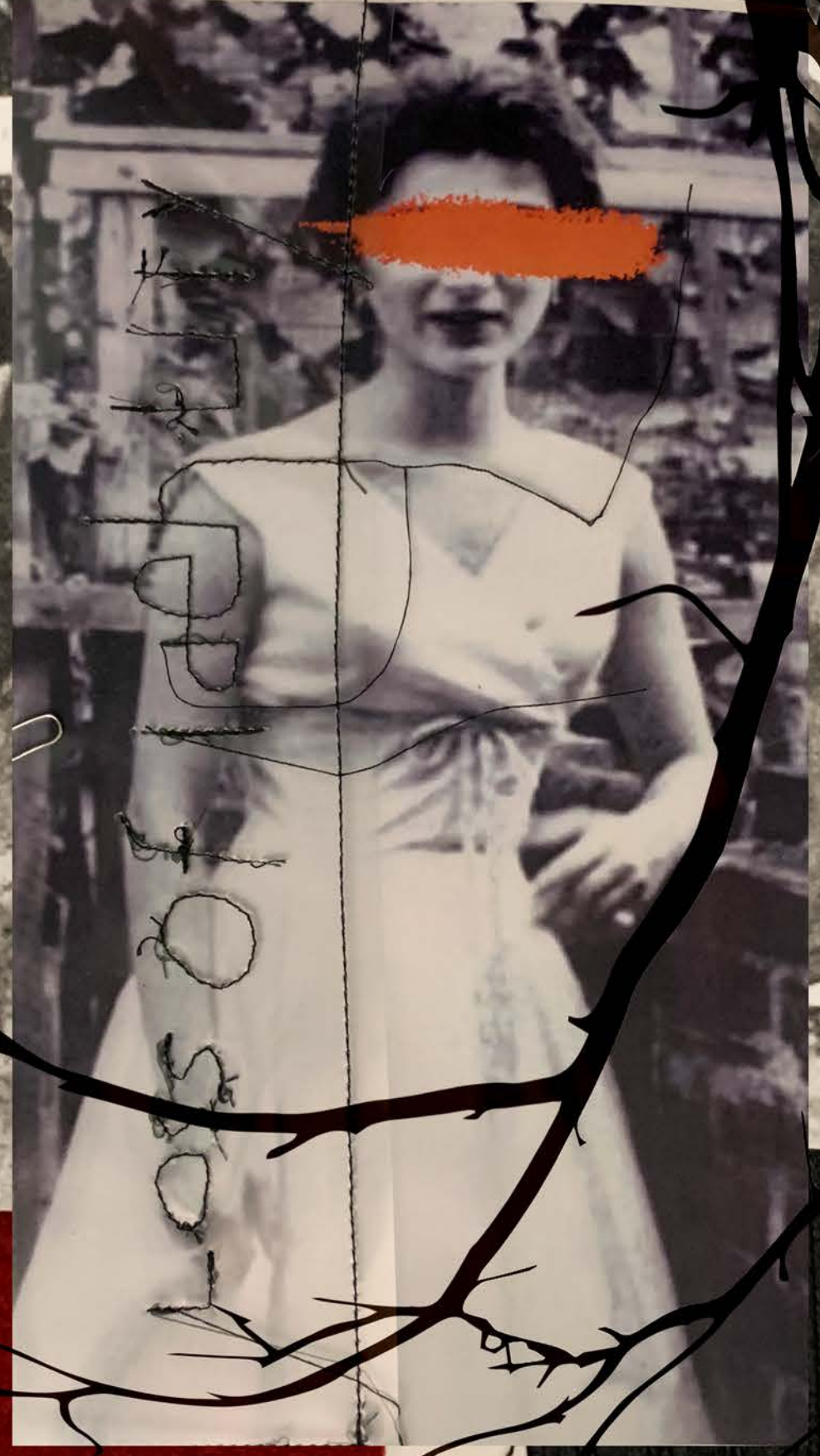
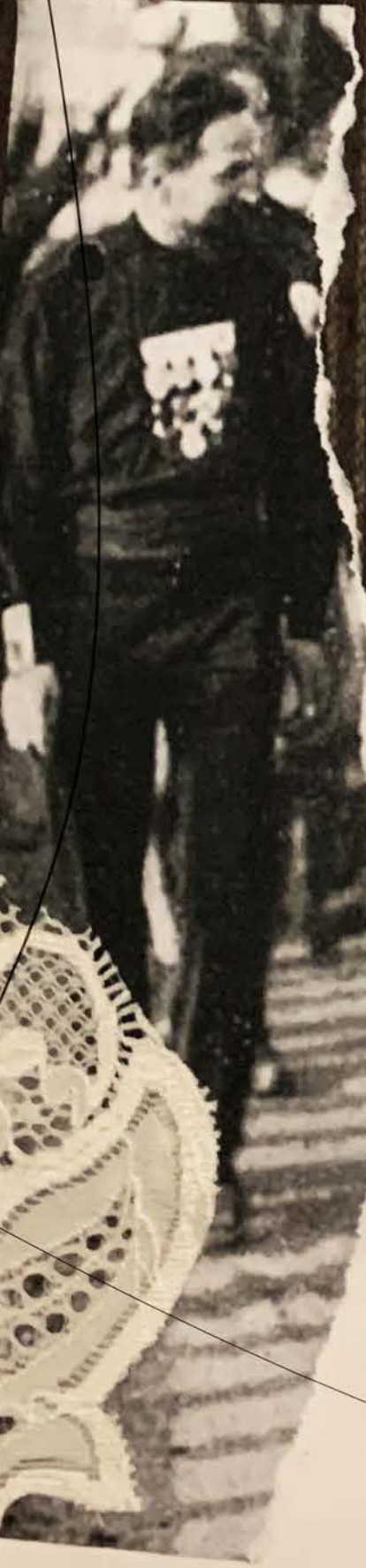
**PANTONE®**  
17-1349 TCX  
Exuberance

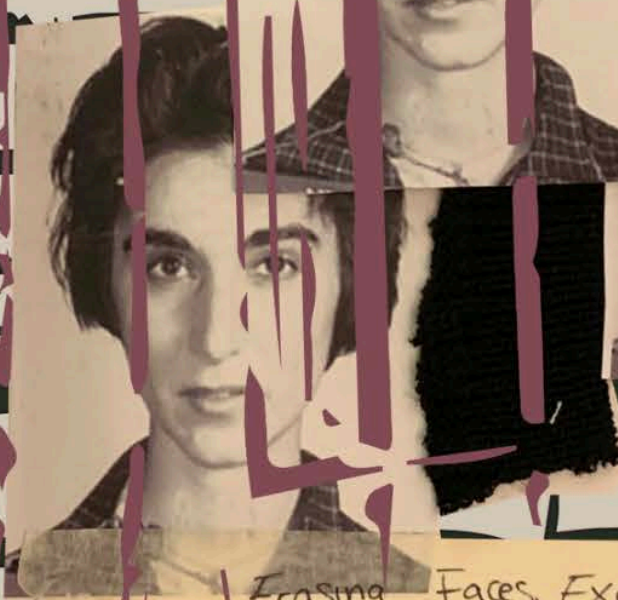
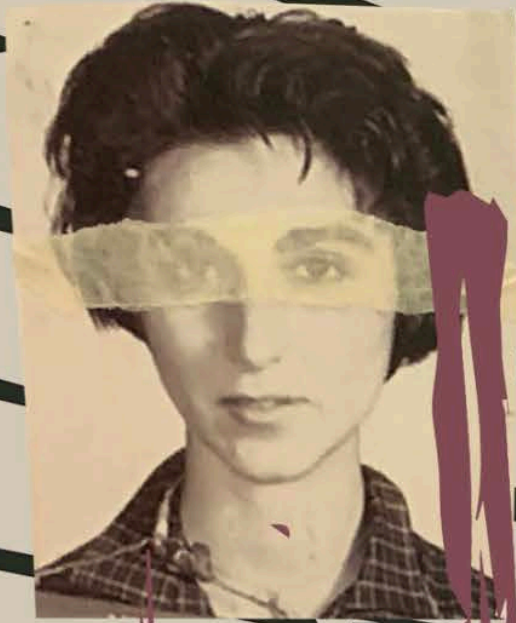


**PANTONE®**  
14-0226 TCX  
Opaline Green

# FABRIC SWATCHES







Erasing Faces, Exercise  
Kitty Genovese



# The Stanford Prison Experiment

Experiment that attempted to investigate the psychological effects of being assigned to be either "guards" or "prisoners" in a mock prison. Some guards enforced their assigned roles, with some guards ultimately subjecting some prisoners to psychological abuse. Some prisoners passively accepted psychological abuse.

Selection of participants



Acceptance

Abuse

Abuse

No

Violence

Chronicle / Daily News





ELECTRIC SHOCK

HARMING

PAIN

TAKE

RESPONSIBILITY

A UNIFORM

OBEDIENCE

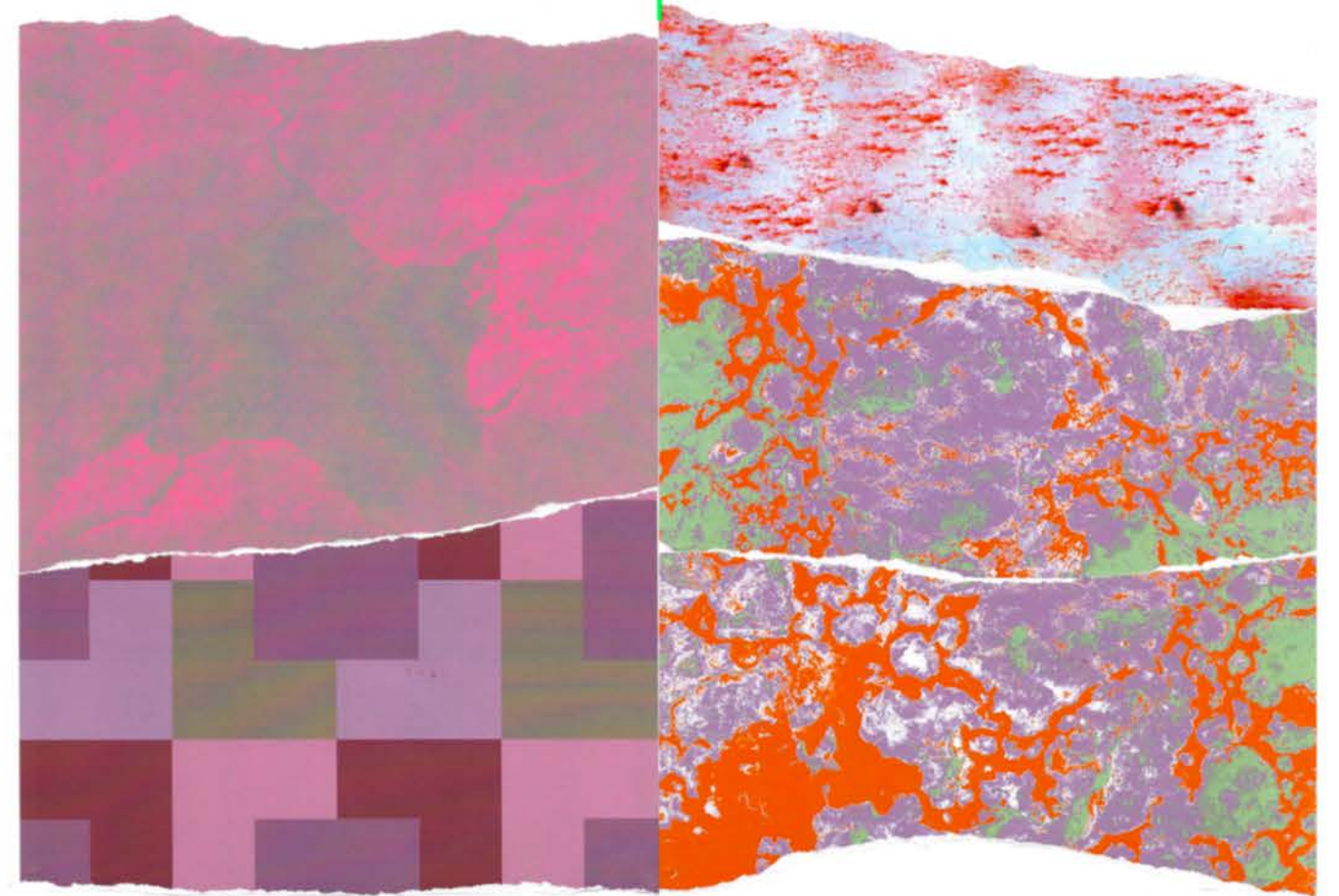
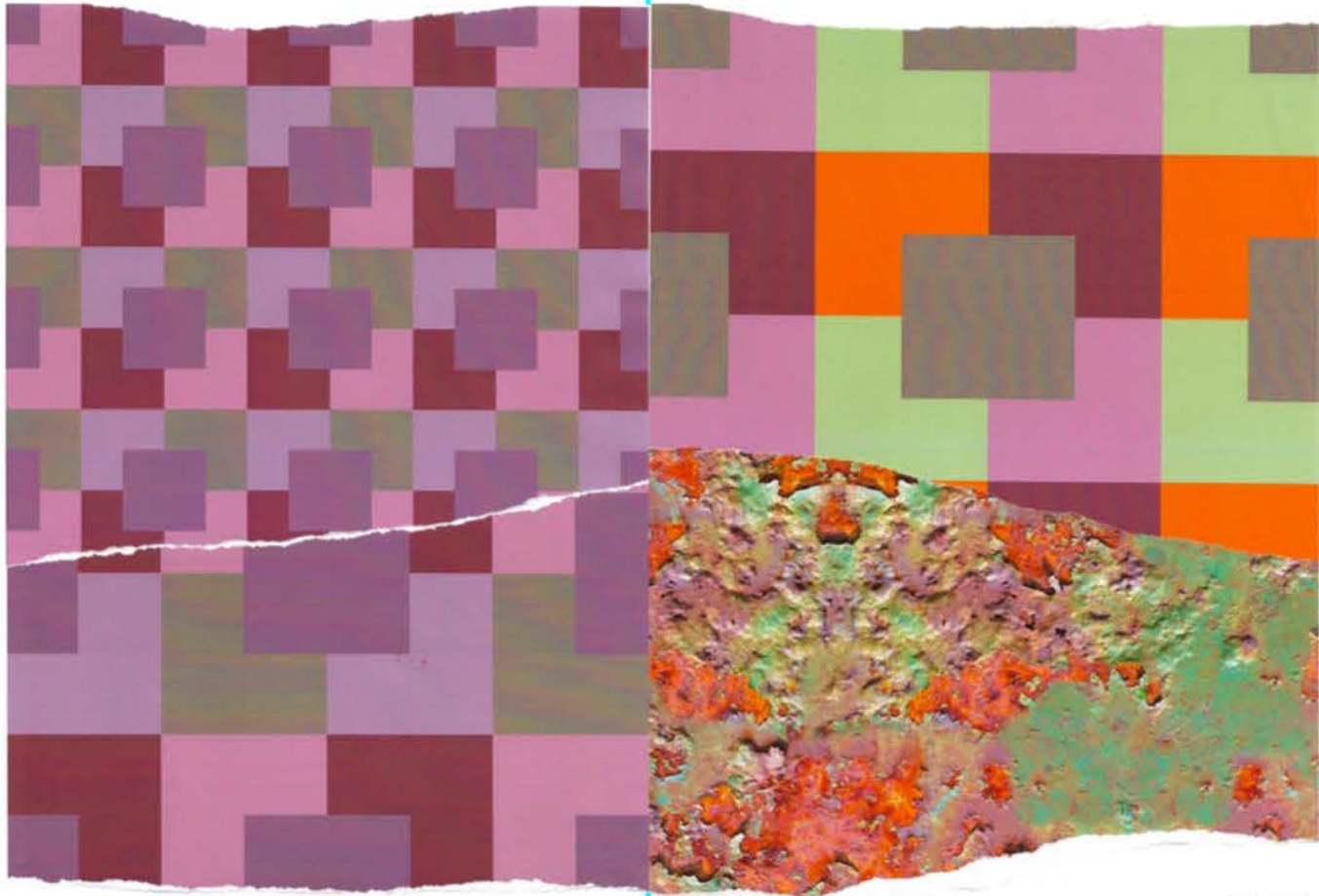


The presence of others m  
become shared and this a  
group.

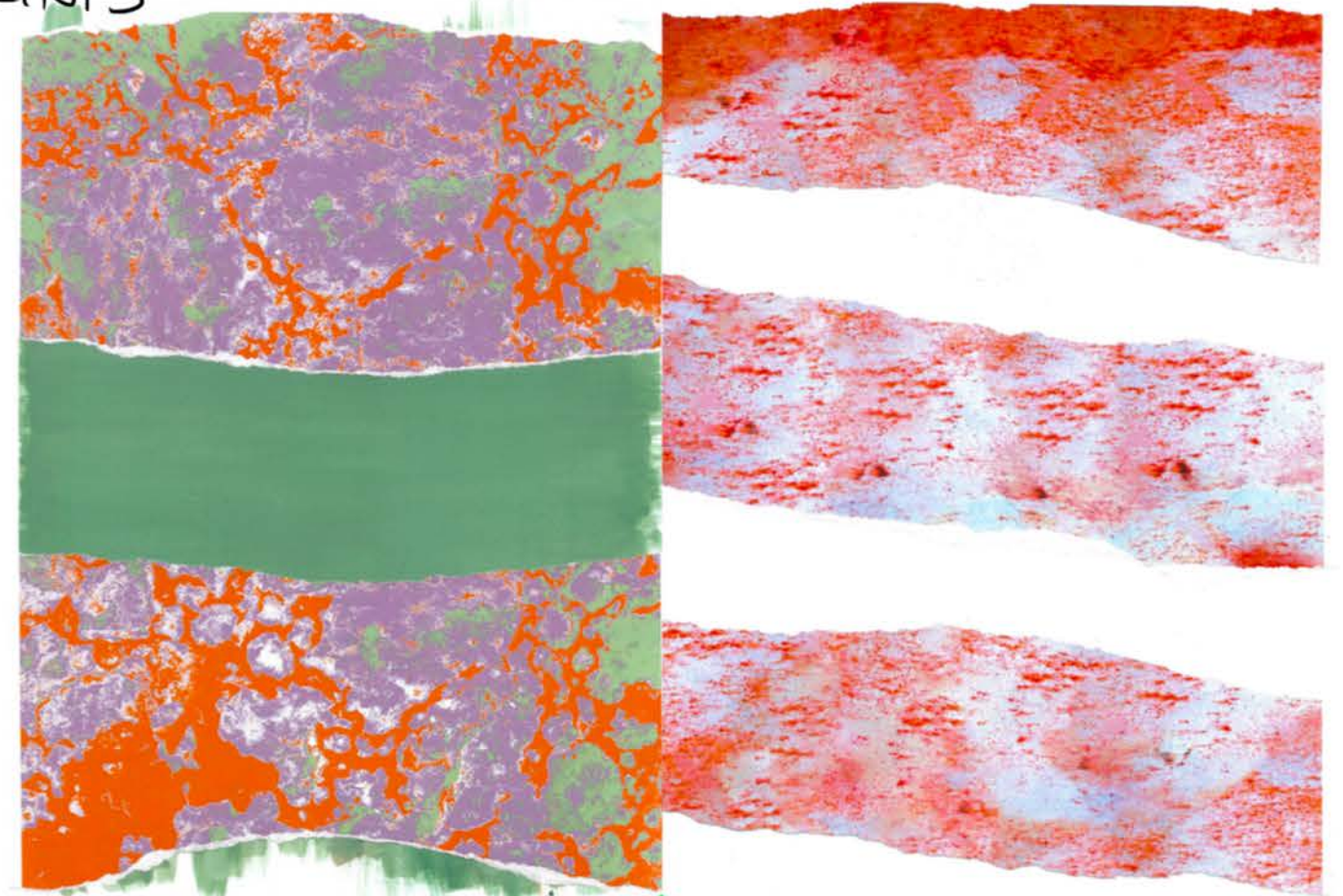
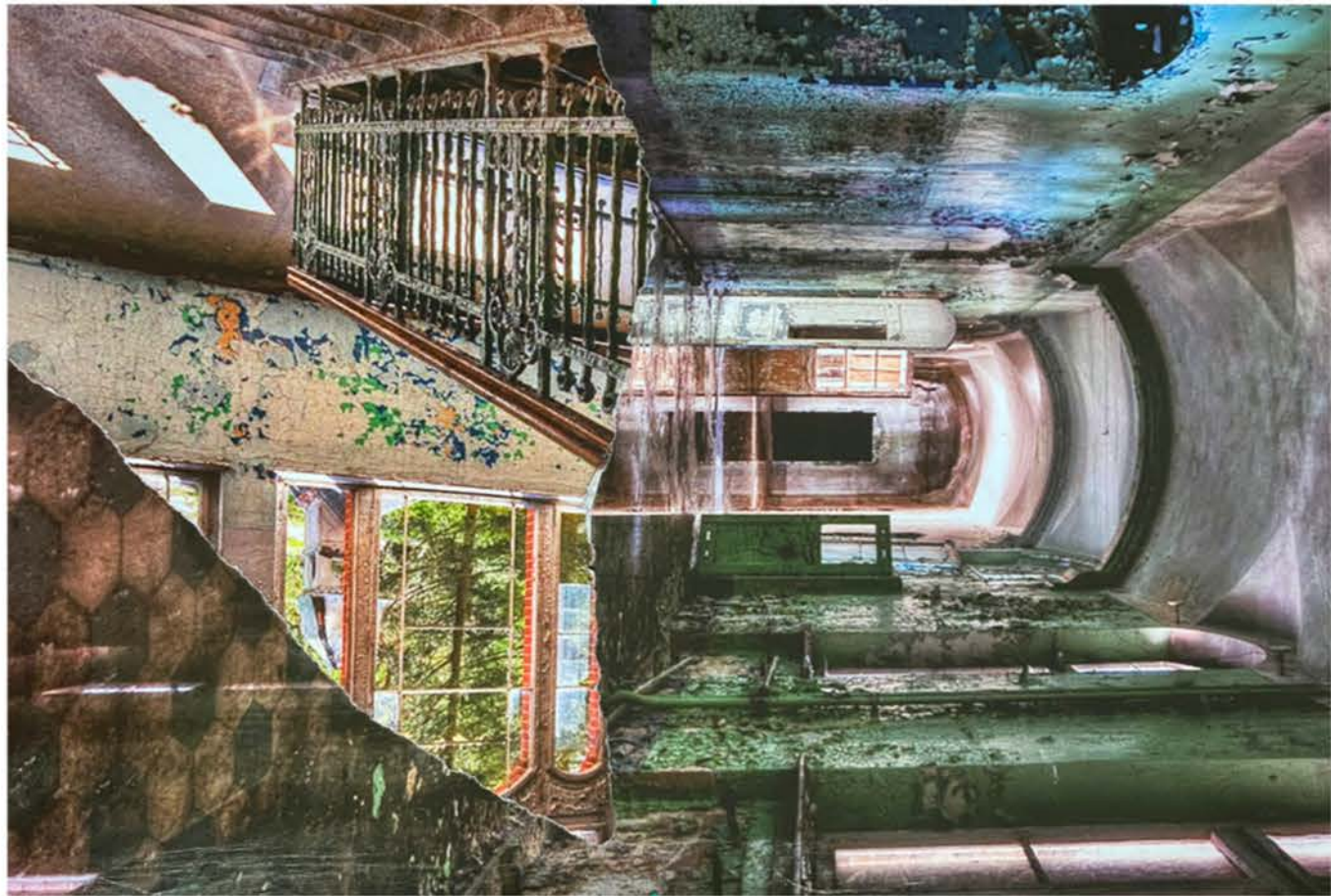
The responsability becom

ciated with inaction  
rom individual to

p.



SAMPLES OF PRINTS







check

SS



FADING



RESPONSABILITY



IDENTITY



GR CHYERS





New Prototype +

HAIF PRINT

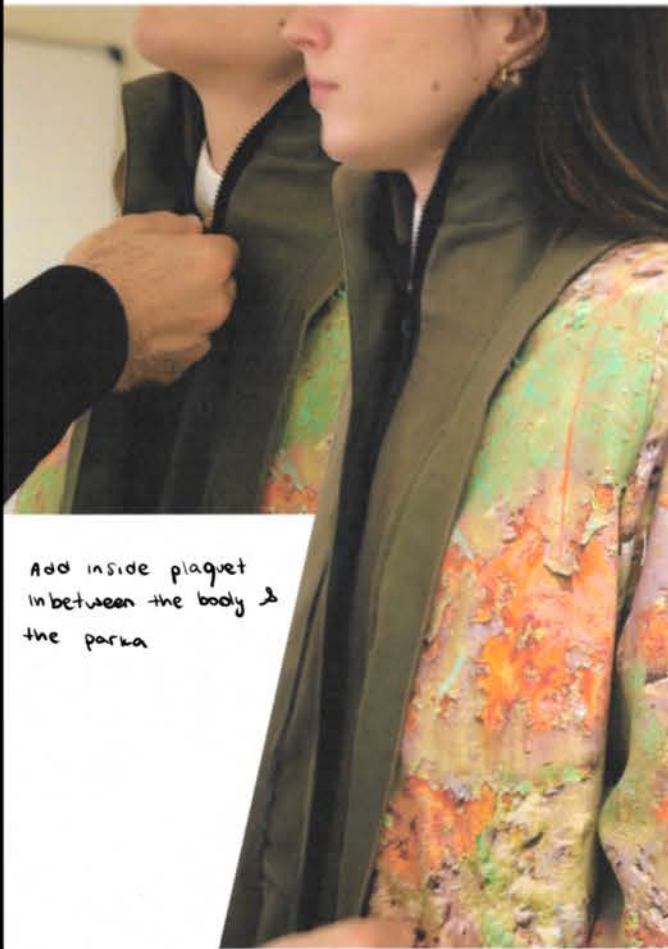


Side view  
Sleeves ARE TOO LONG - ROOM

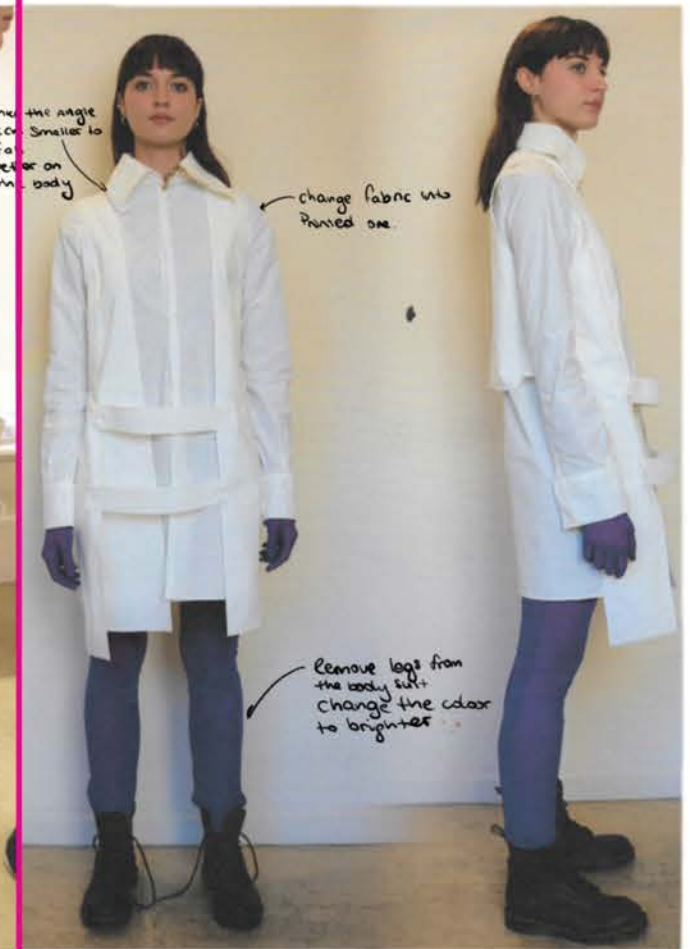
MAKE INTO ONE THAT GOES OUT AND INSIDE



First attempt to face mask METAL WIRES + Embroidery



Add inside placket inbetween the body & the parka



make the angle 2cm smaller to fit better on the body

change fabric with pinned one

Remove legs from the body suit + change the color to brighter



FABRIC SWATCHES





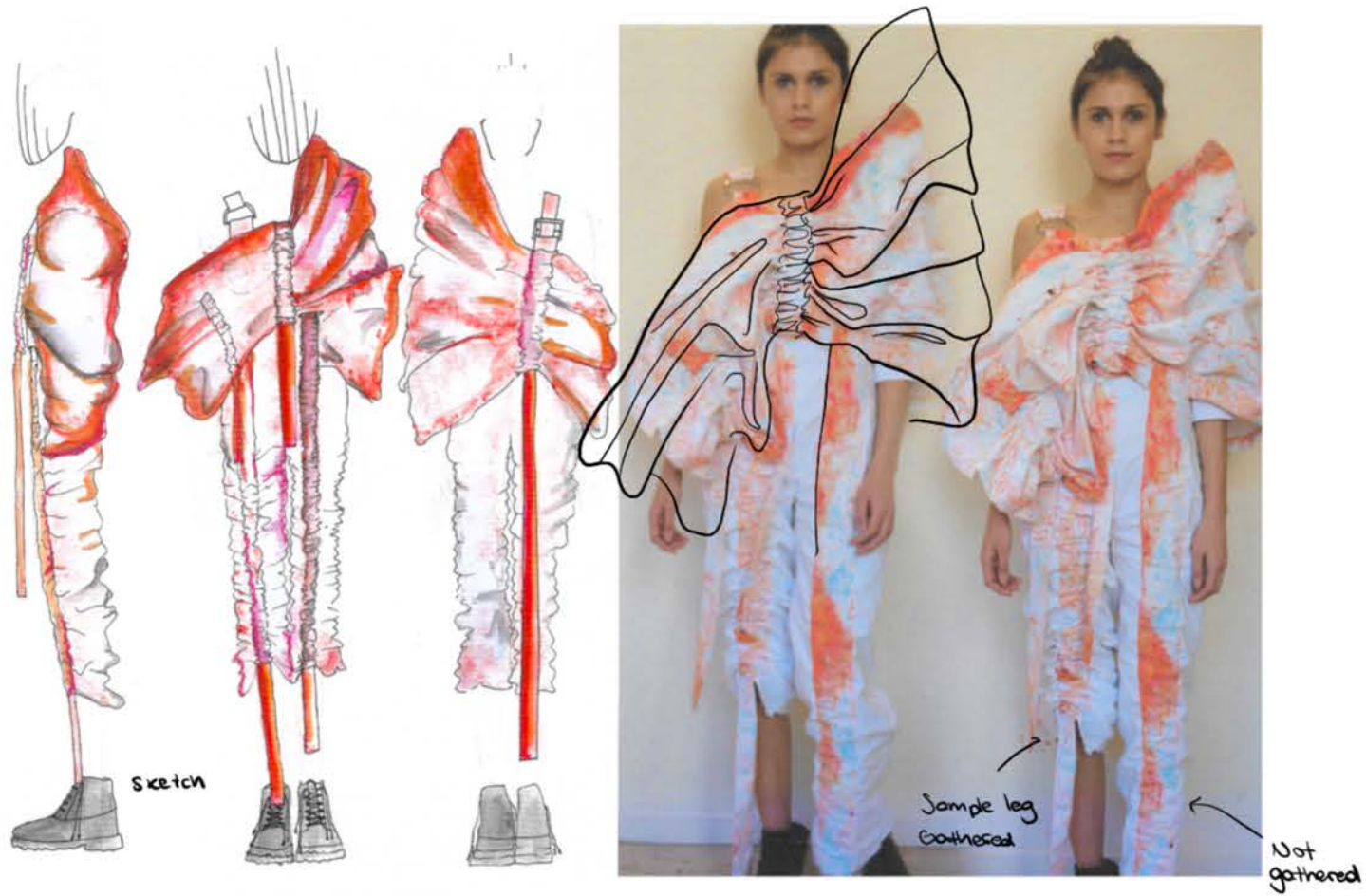


Prototype Blazer + Trowler





Long Sleeve like the one of the Straight jacket

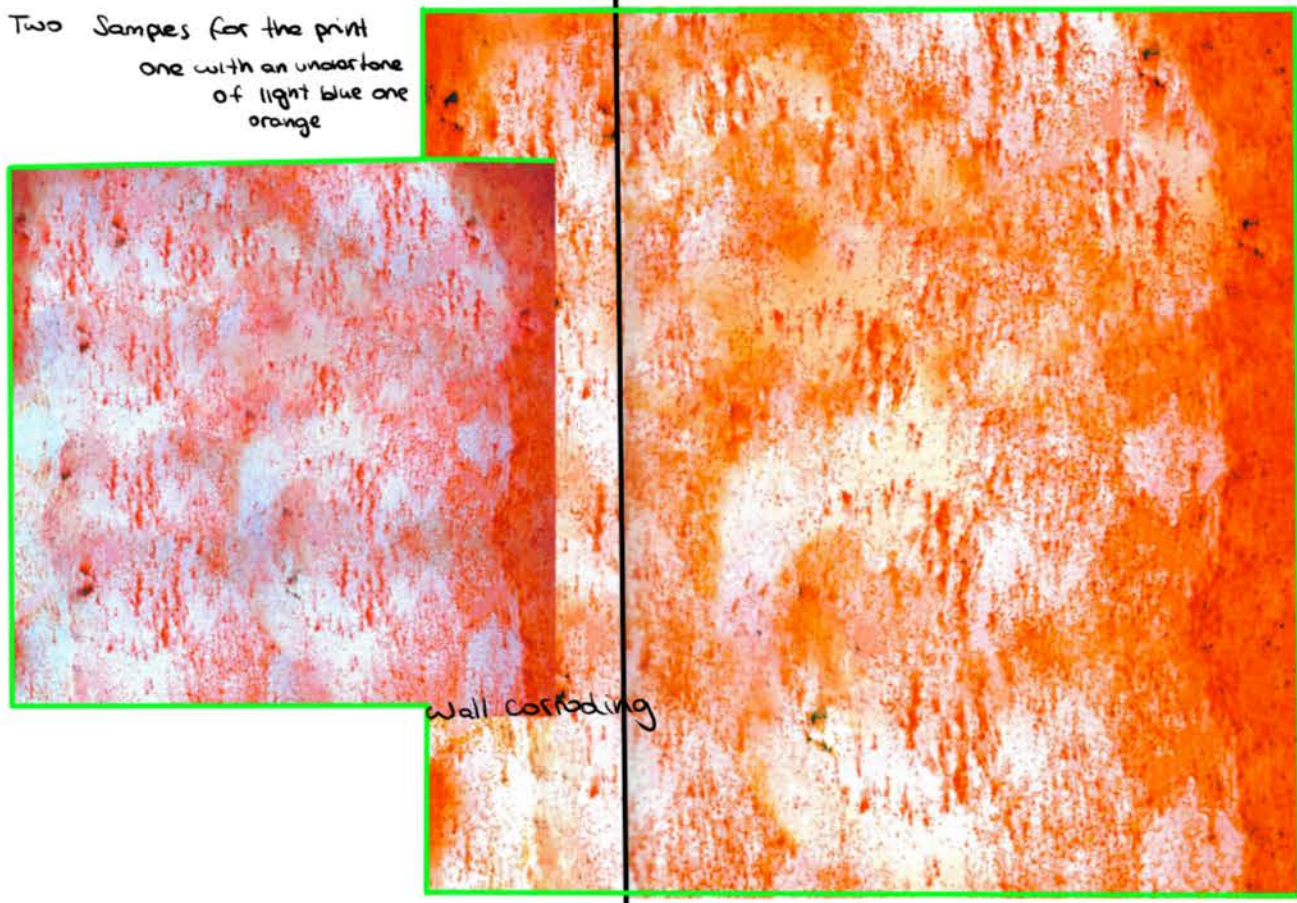


Overall prototype  
 belt is used as a shoulder strap and goes into the back to create the garters

BASE OVERALL WITHOUT SLEEVE

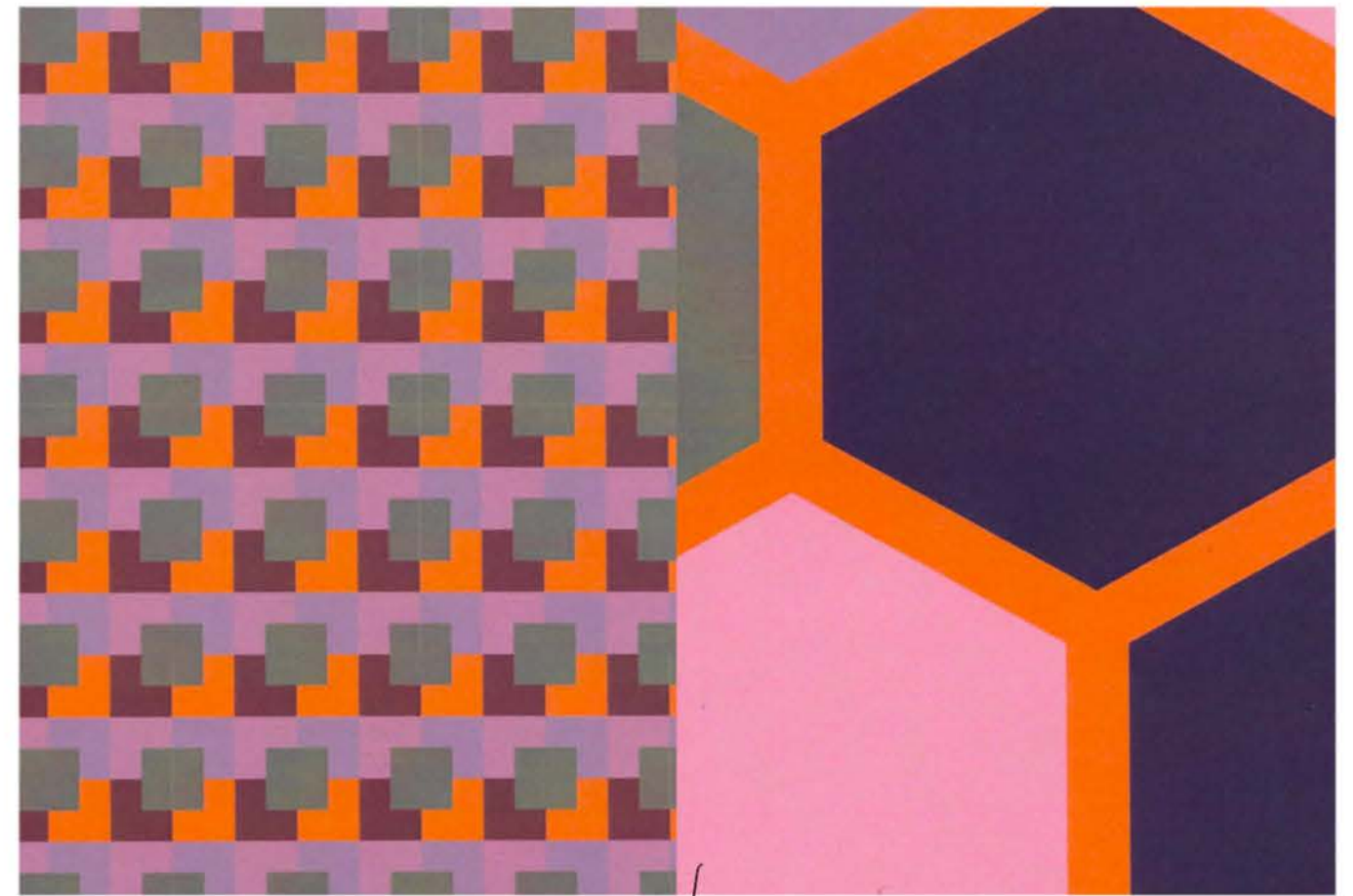


Two Samples for the print  
 one with an undertone of light blue one orange





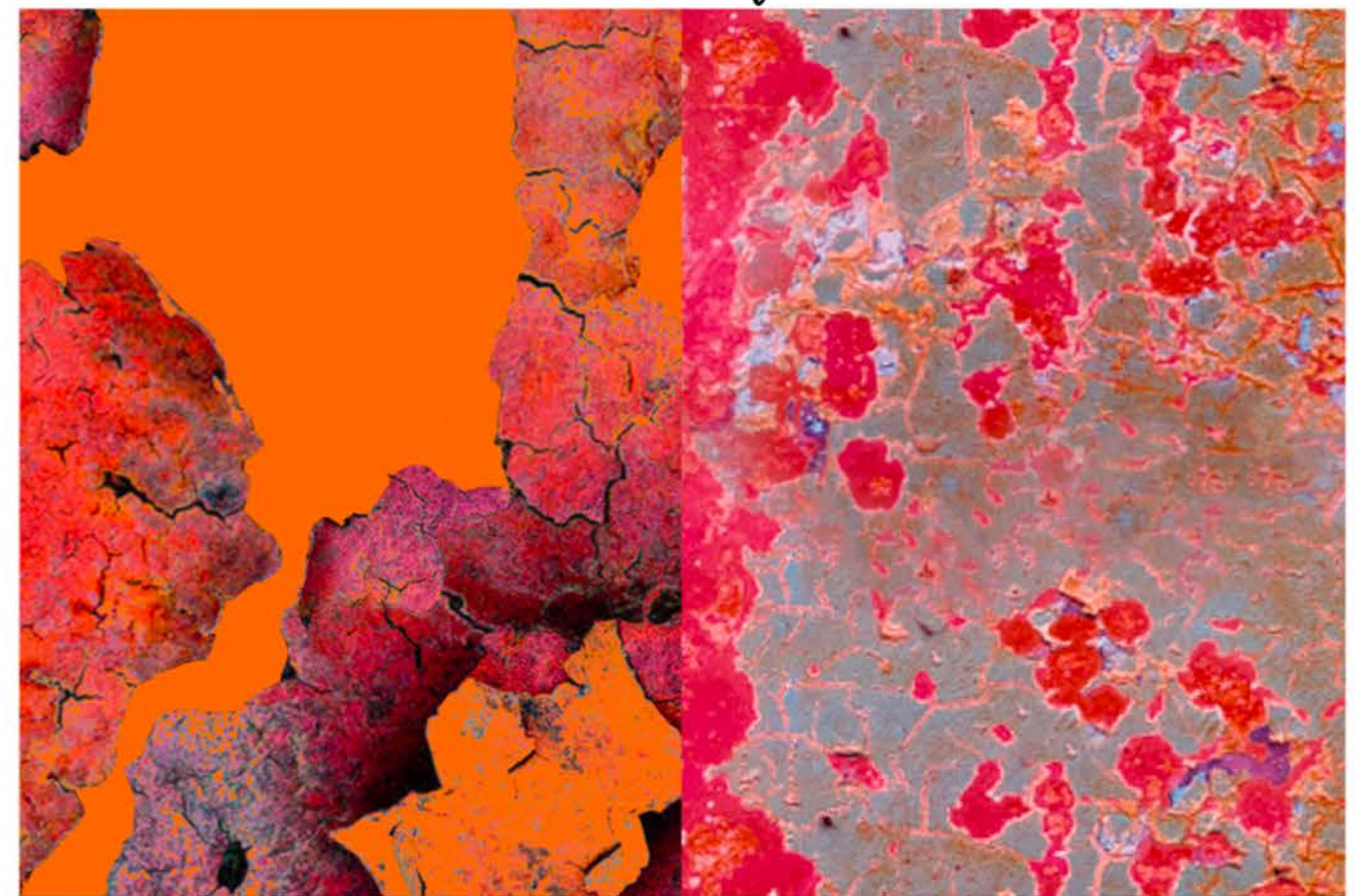
inspired from military uniform

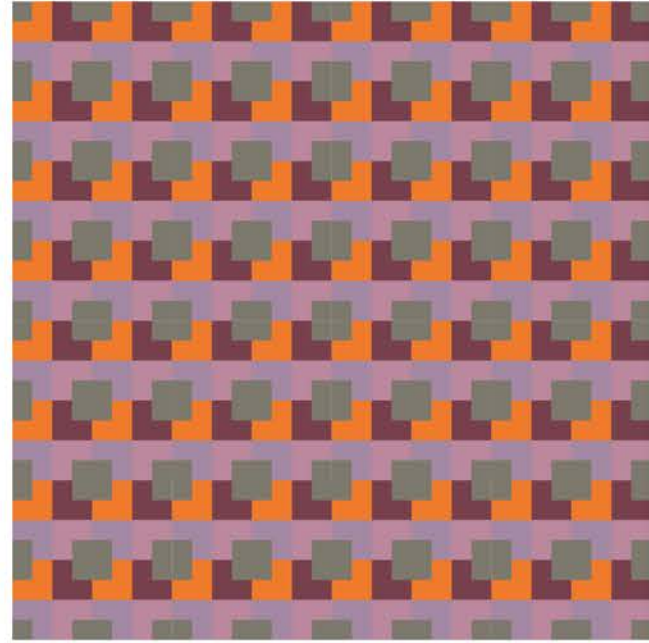


geometric  
walls decaying

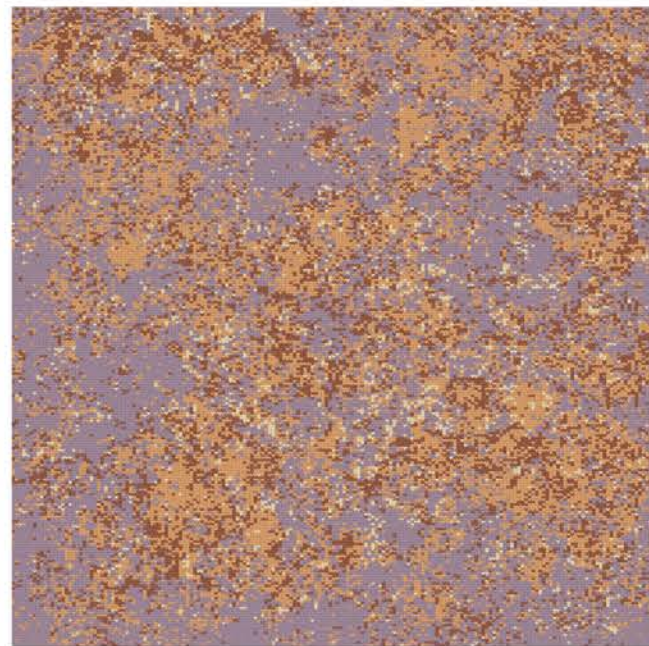
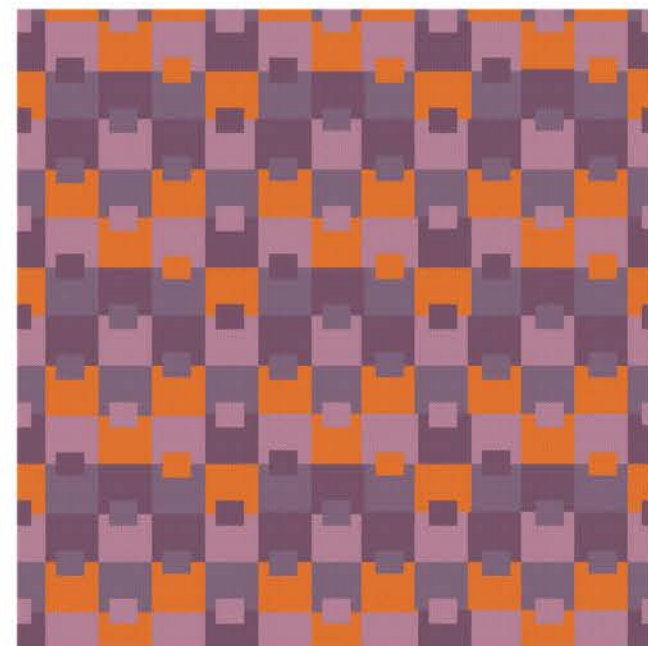
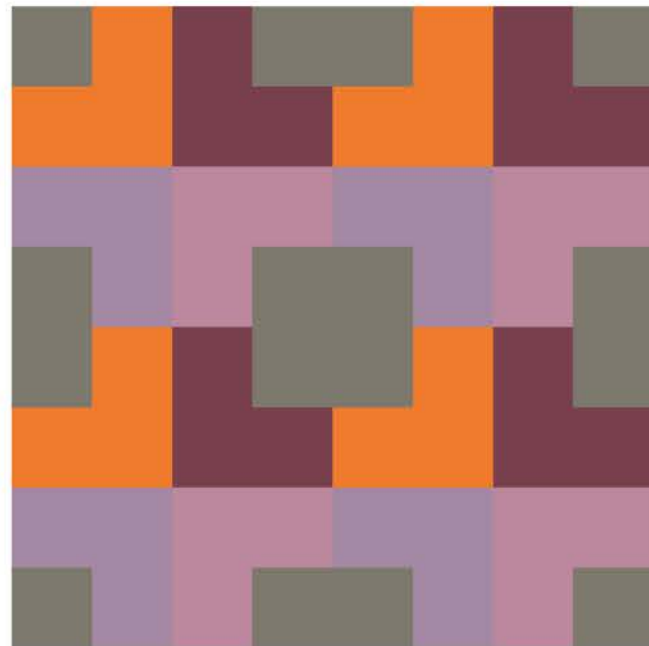
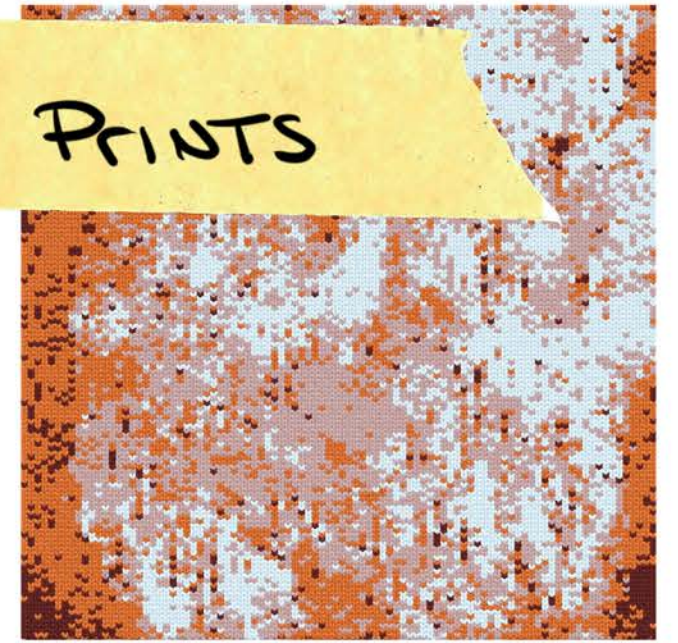


mixed camouflage + geometric





FINAL PRINTS



FIRST Research  
COMBAT Military Boots

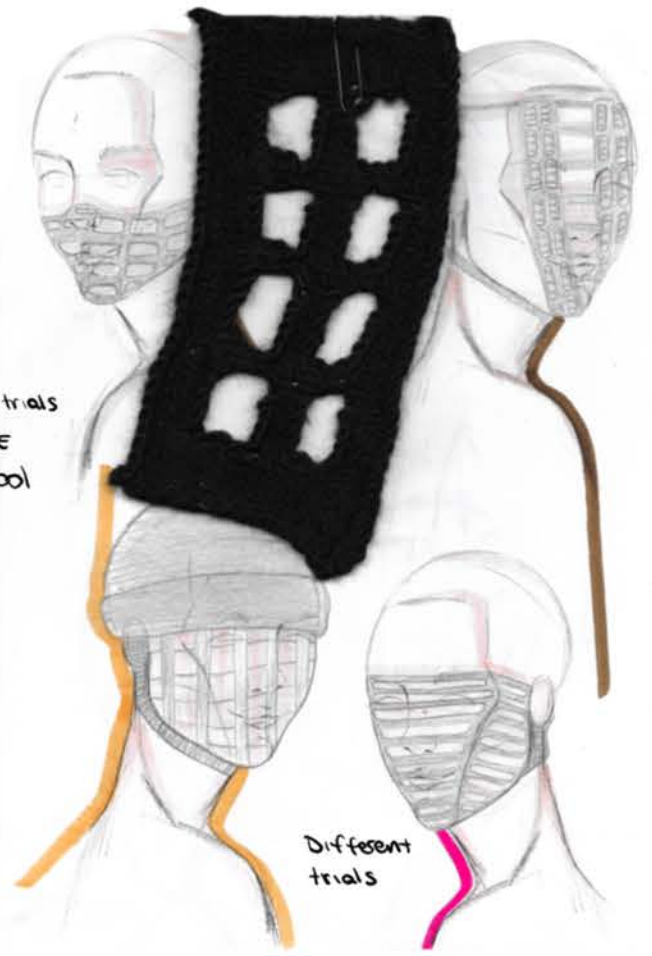
Different Closure

Tall robust  
Rubber Soles

Create more  
layers later cutting  
the Sole and gather  
one on top of the  
other



MASK First trials  
HAND MADE  
100% WOOL

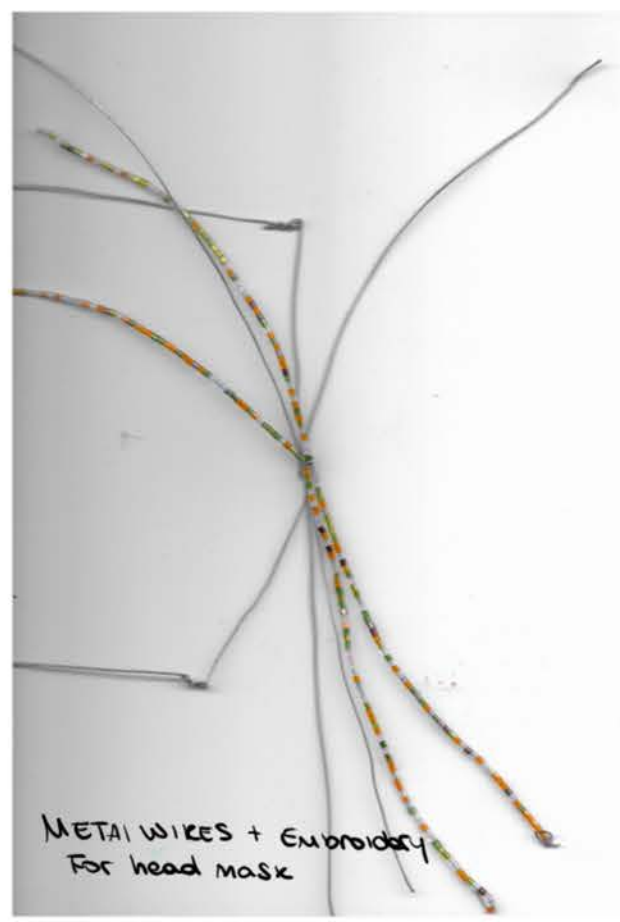


Different  
trials

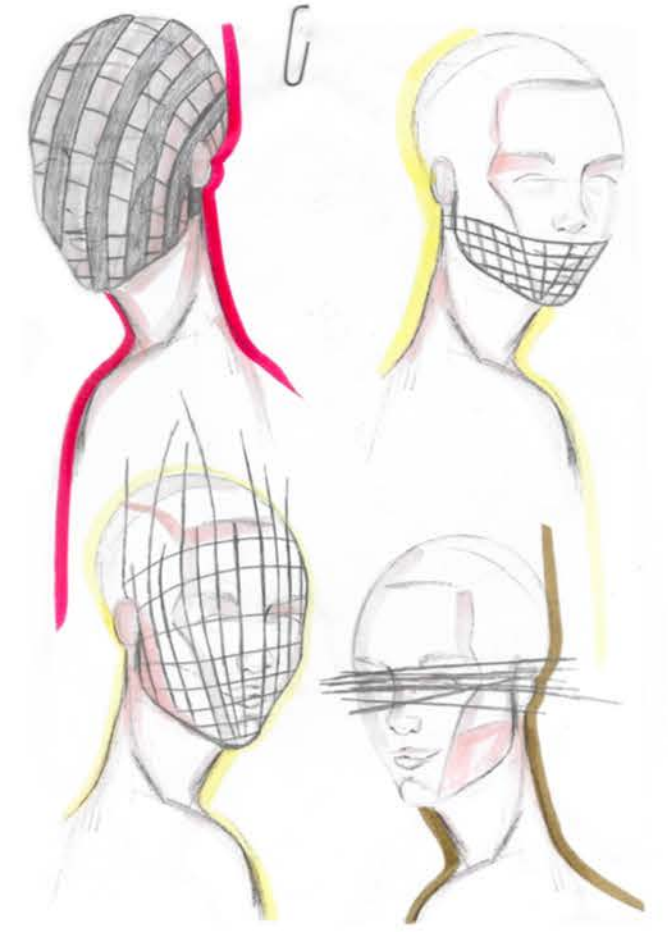
Two sketches of  
boots low and  
taller

Double Sole  
the bottom  
larger

Wires mask



METAL WIRES + Embroidery  
For head mask



THREE OPTIONS FOR SHOES



FLAT LEATHER BOOTS WITH TRACK SOLES

Black - Ref.7150/001  
99.95 EUR

41



STRETCH HIGH HEEL ANKLE BOOTS

Black - Ref.1105/510  
39.95 EUR

41



FLAT CANVAS ANKLE BOOTS

Ecru - Ref.2432/510  
49.95 EUR

41



TEXTURE ORANGE NEON PAINT



MANIPULATIONS Stiches

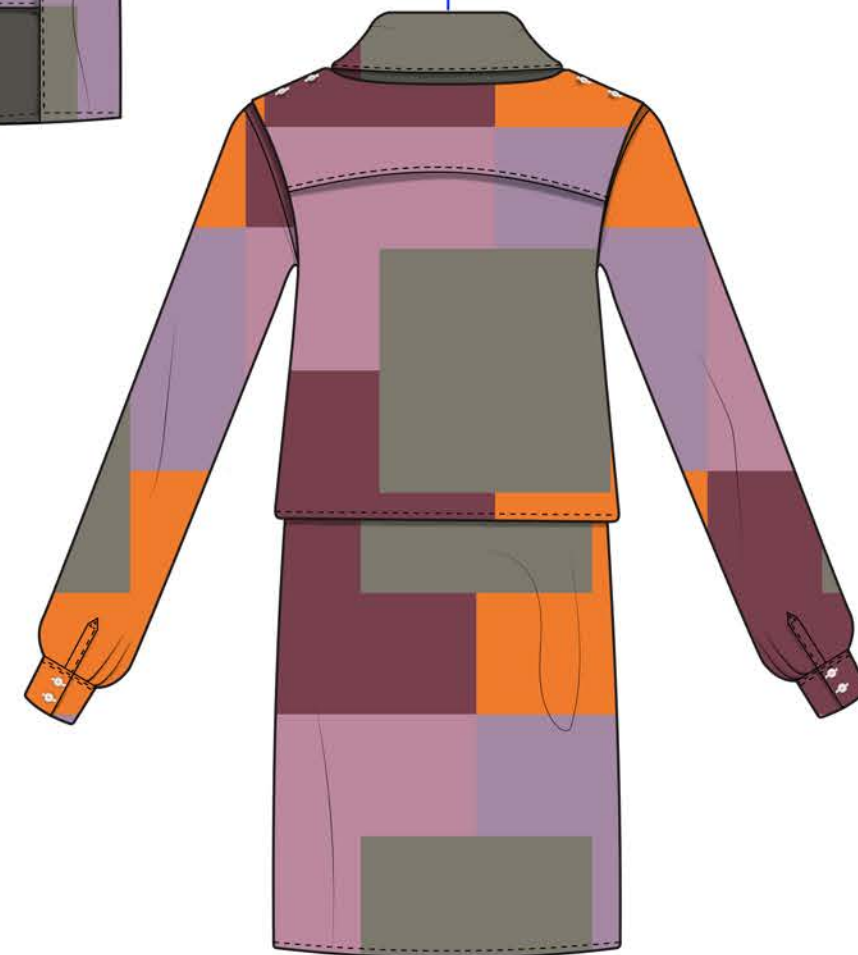
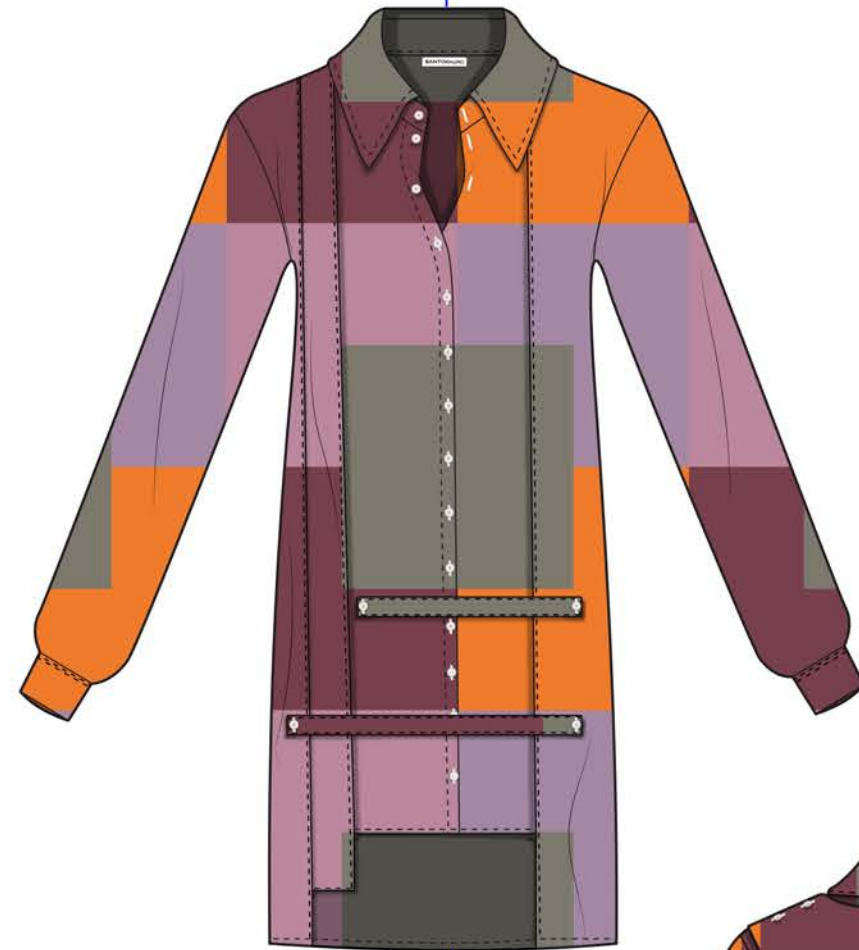
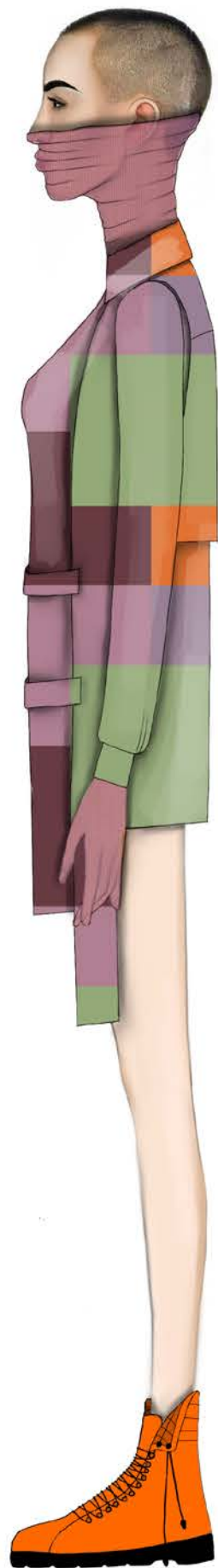
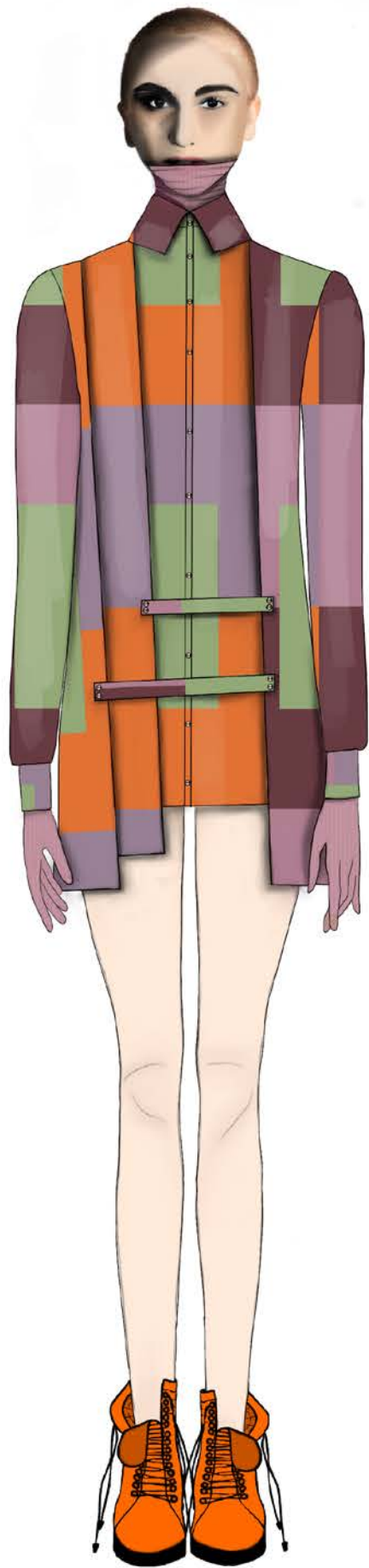






# LOOK ONE





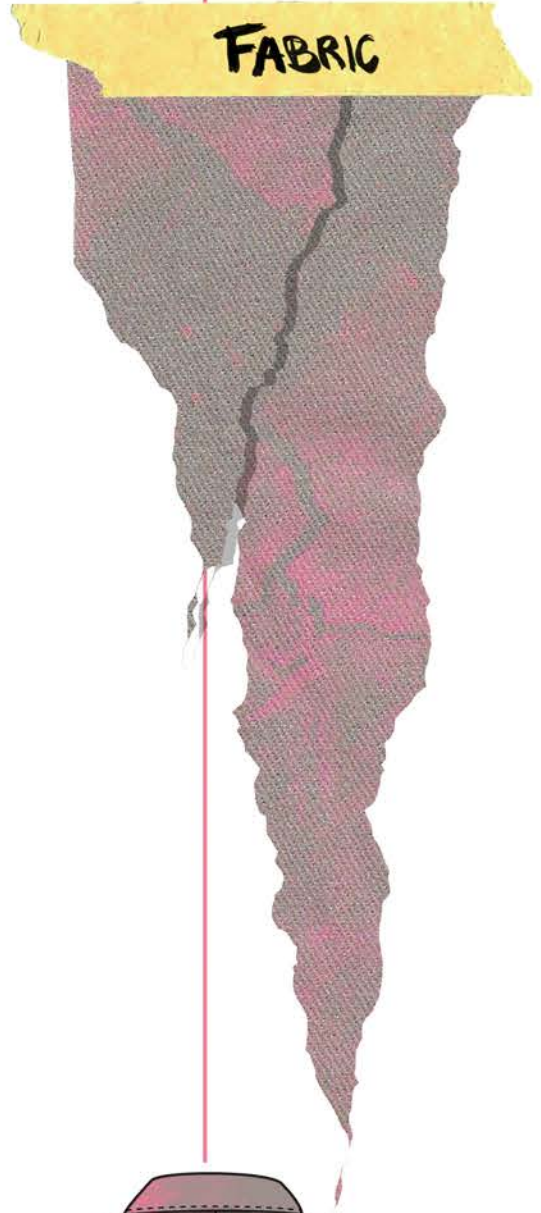
FABRIC

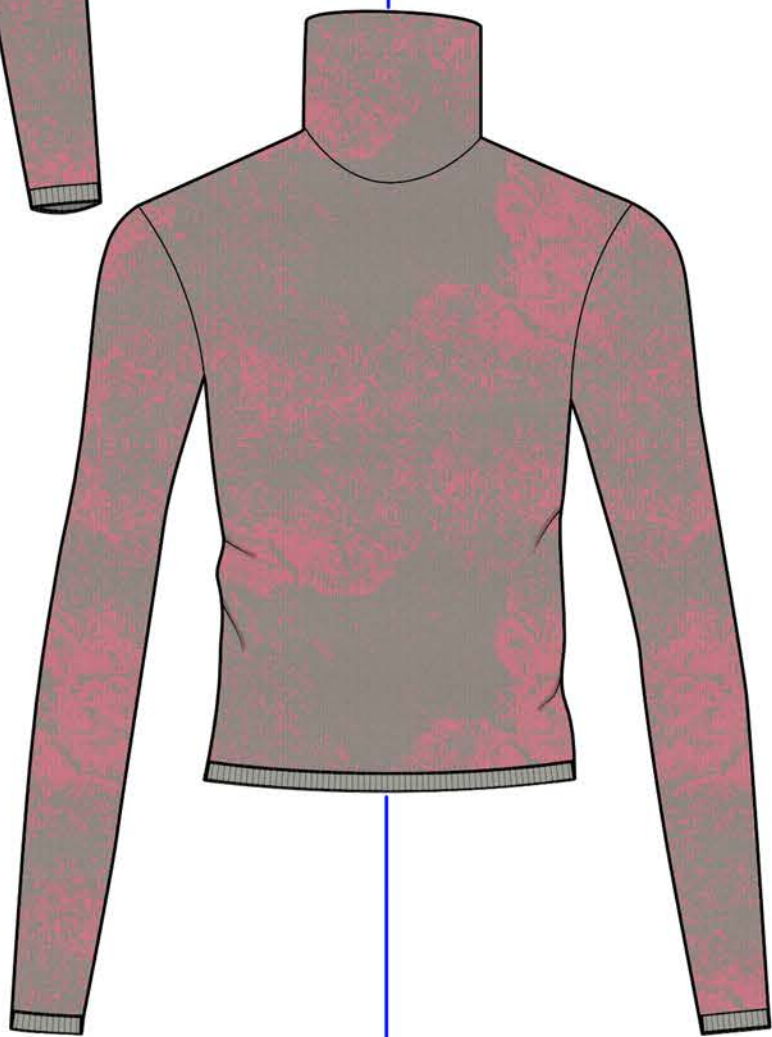
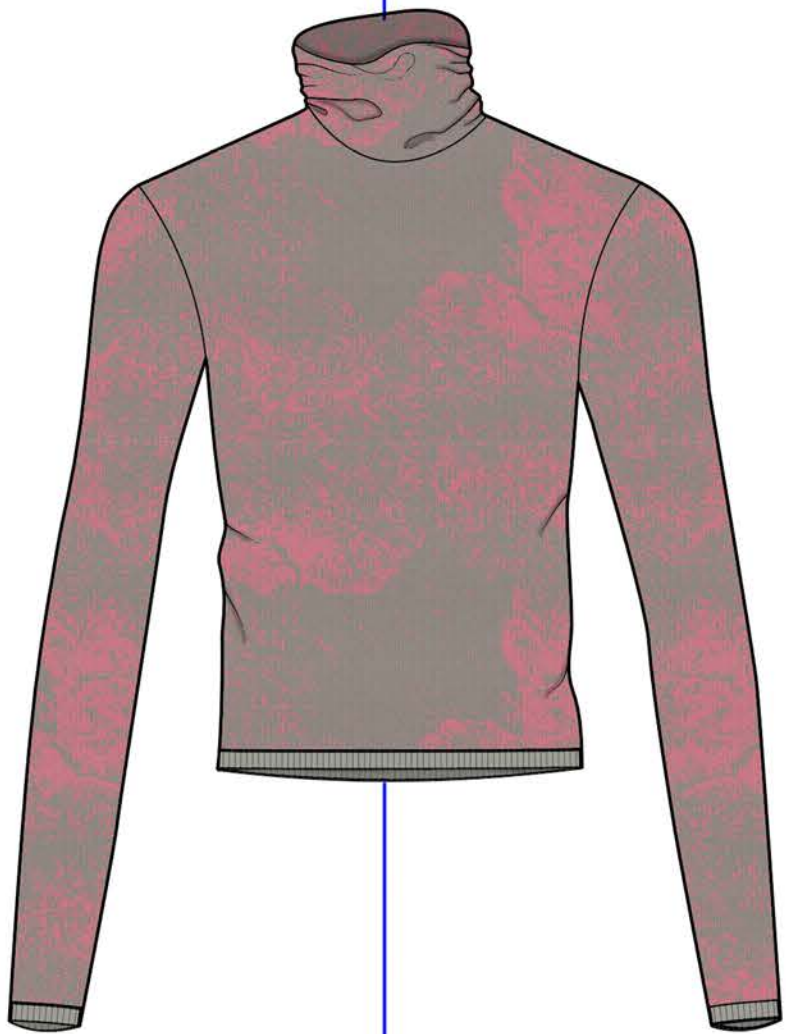
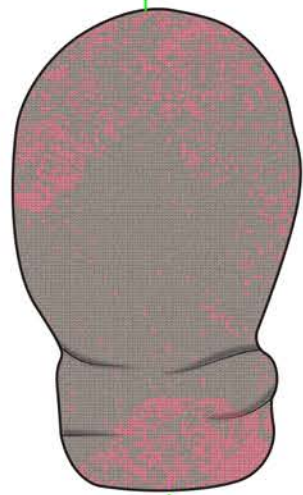
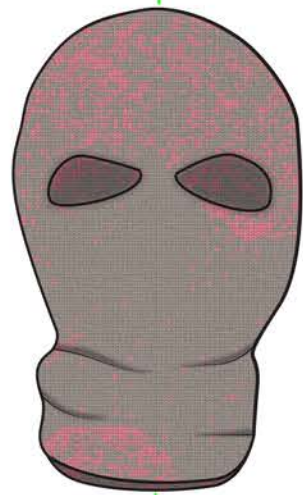


# LOOK TWO

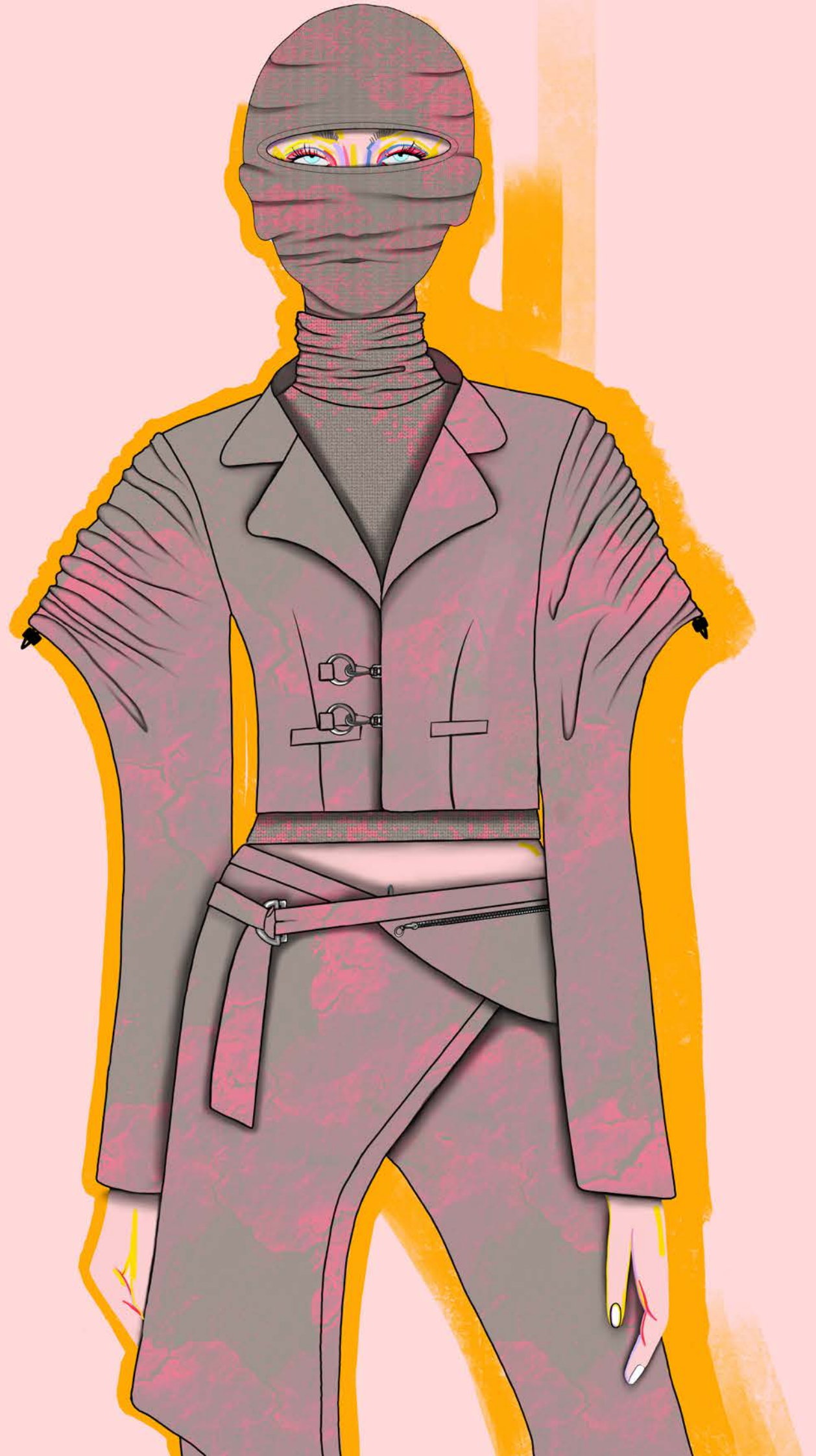
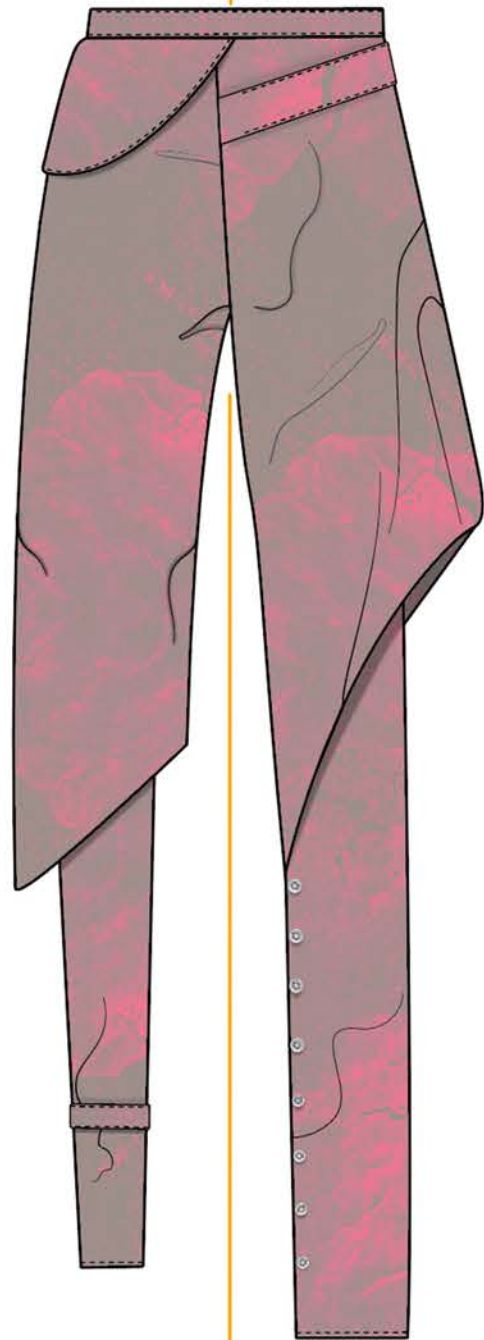
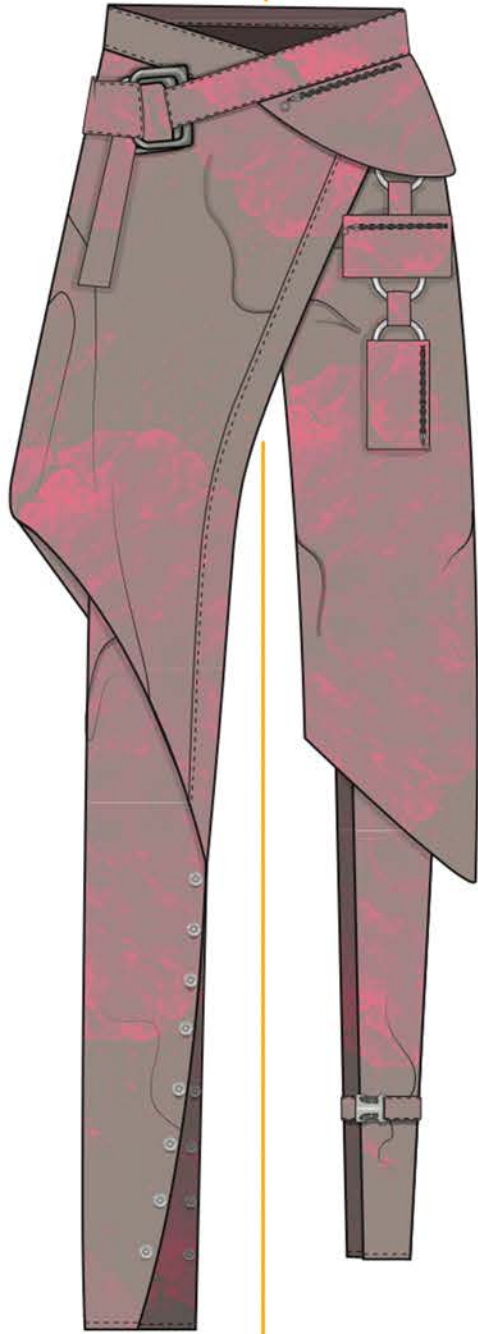


FABRIC



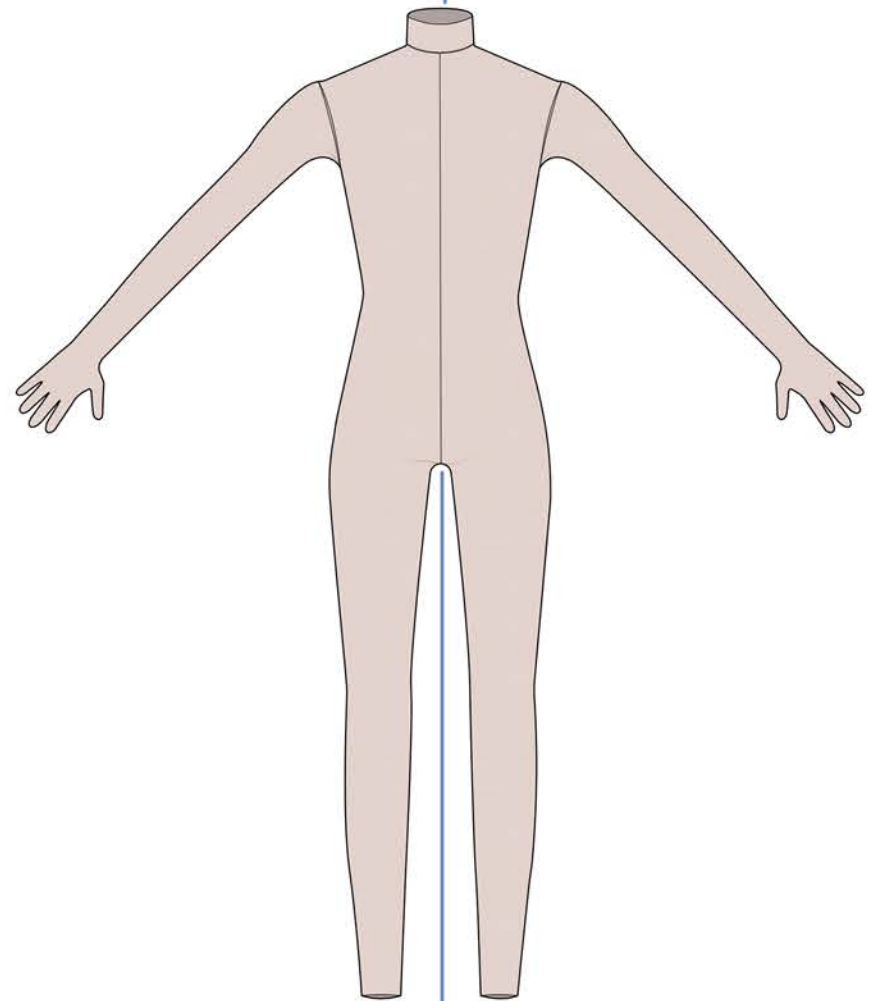
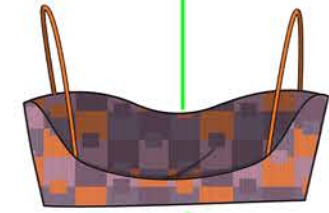
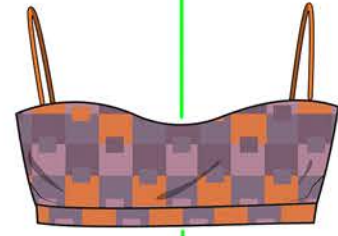
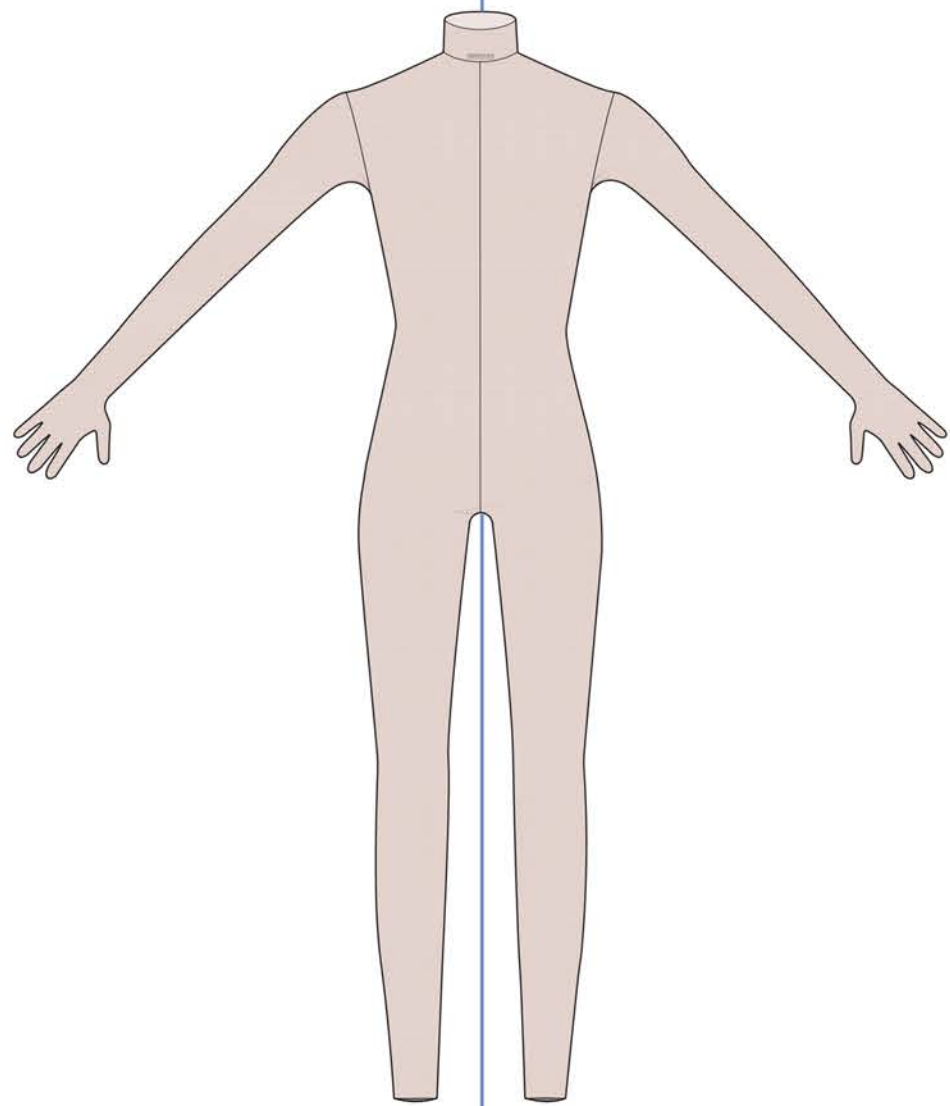


FABRIC



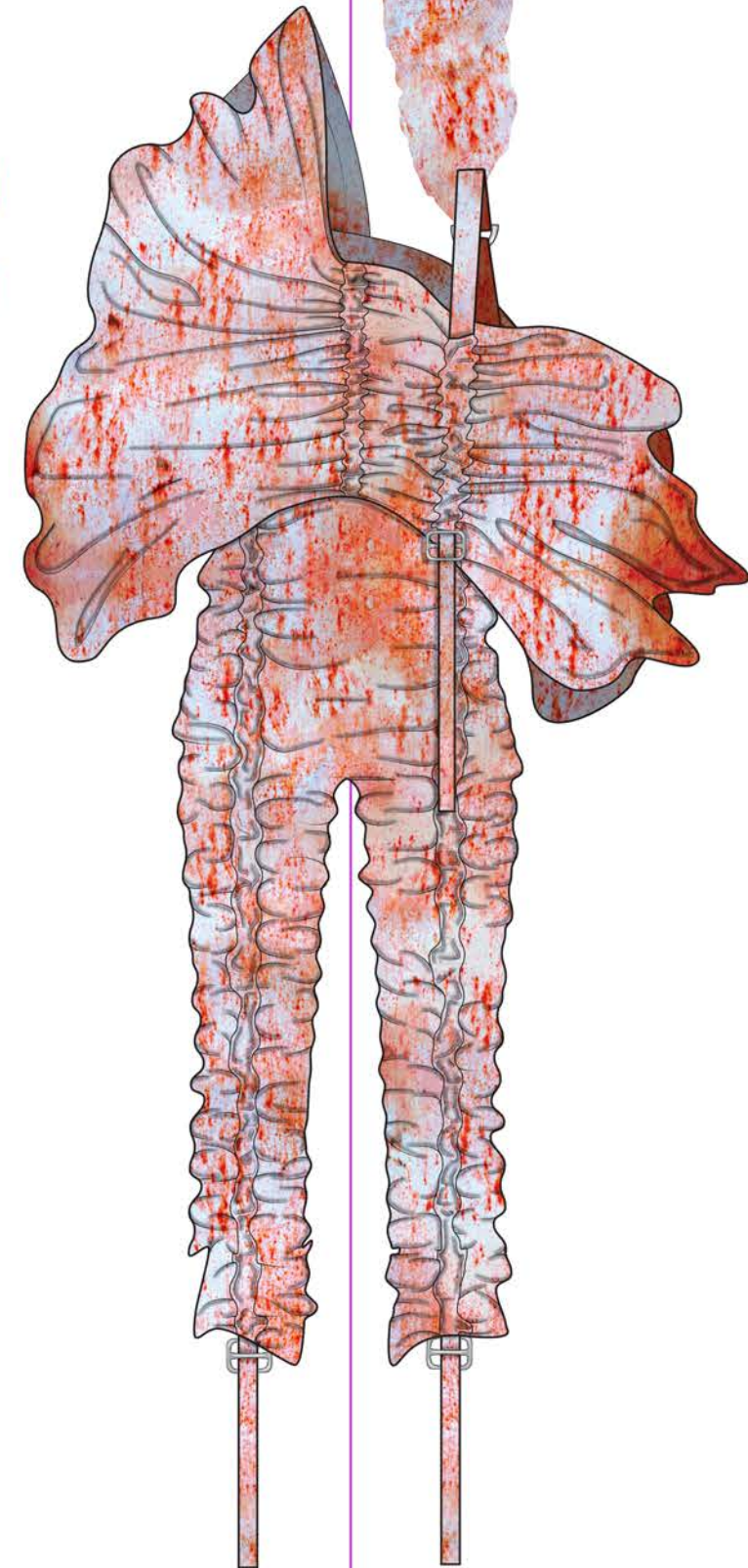
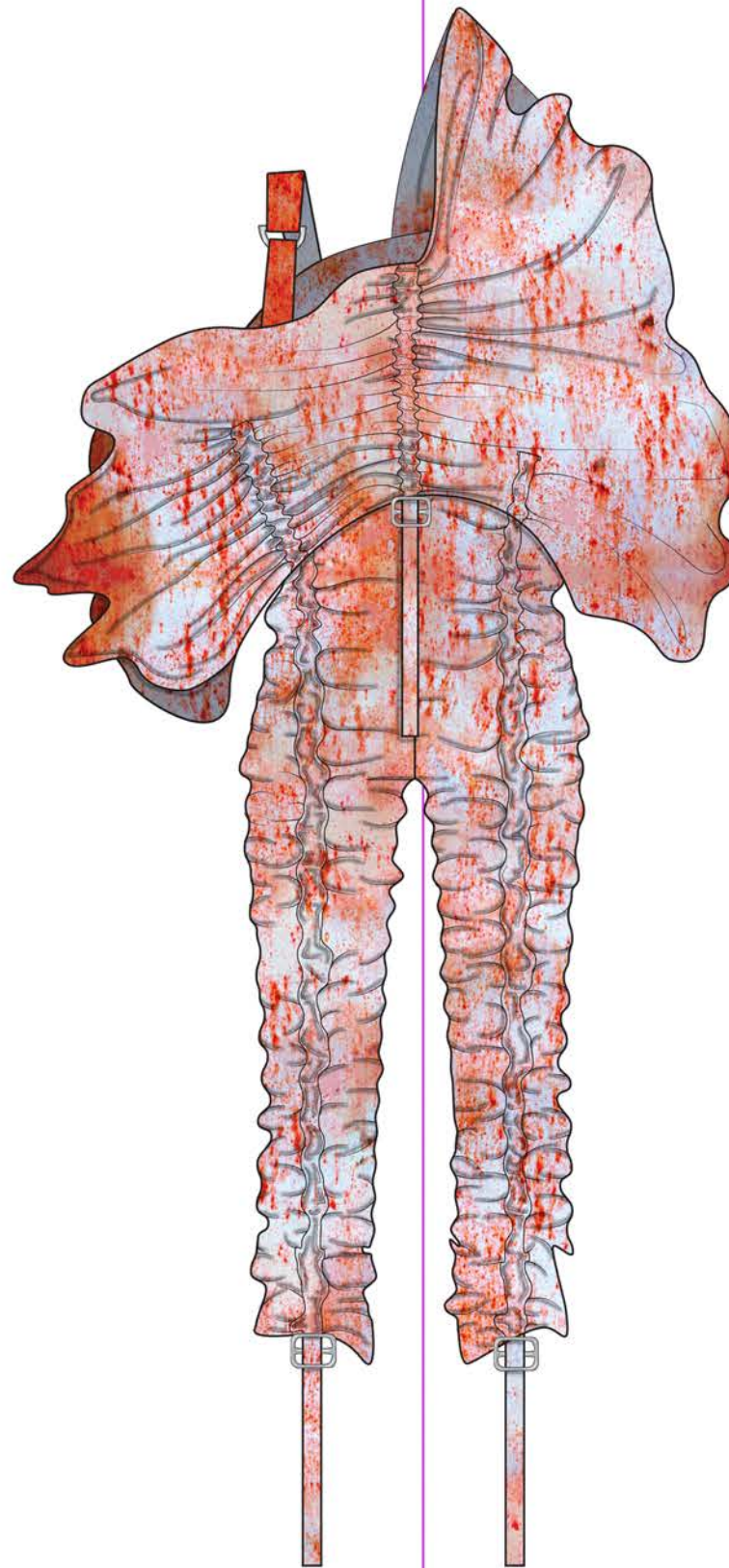
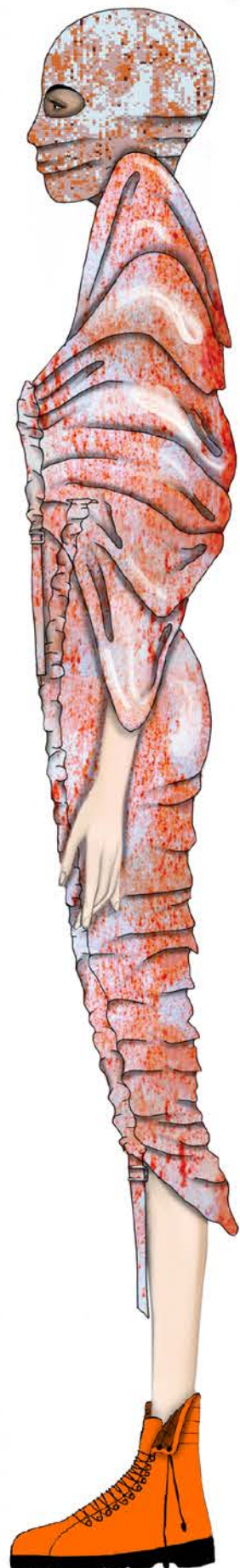
# LOOK THREE





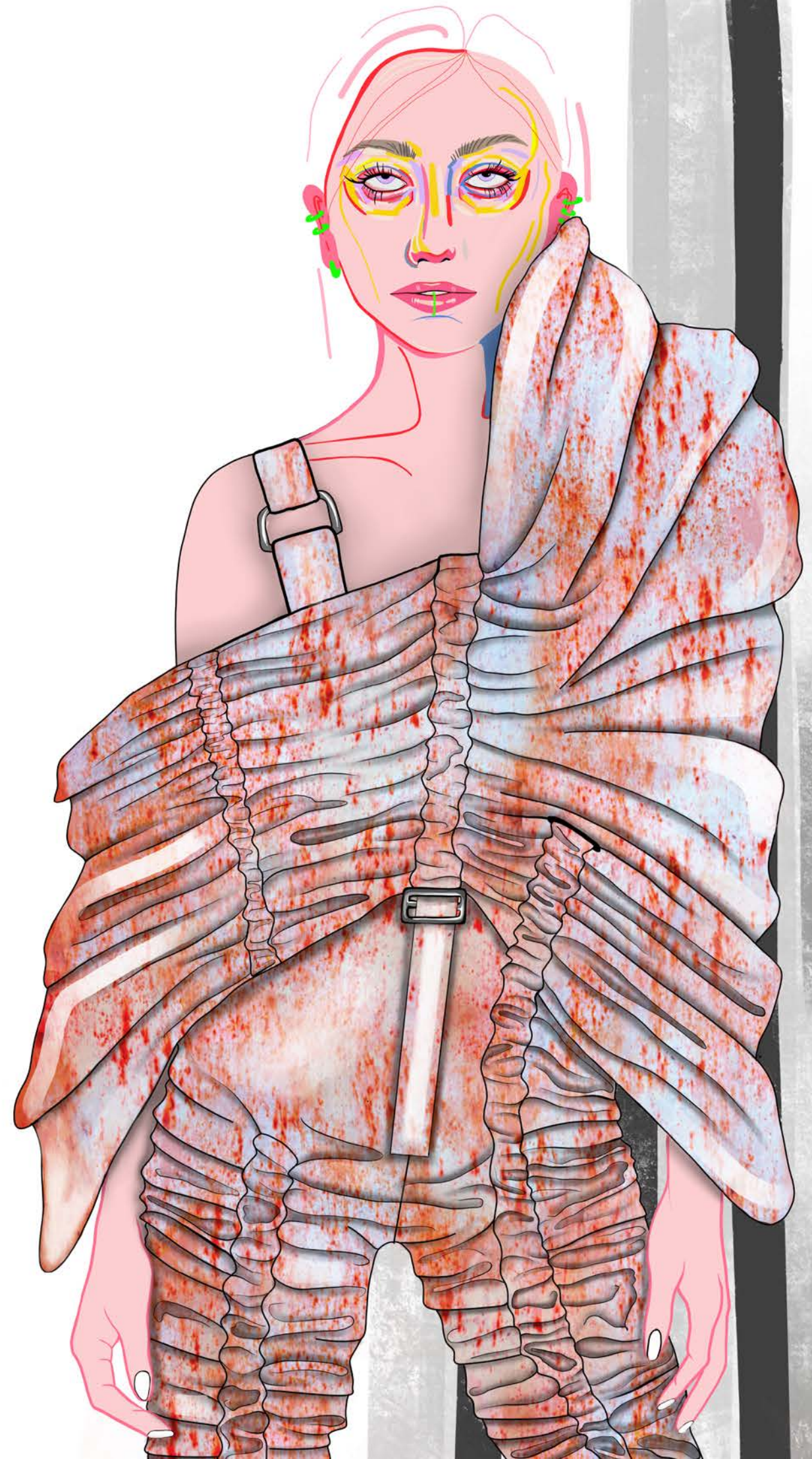
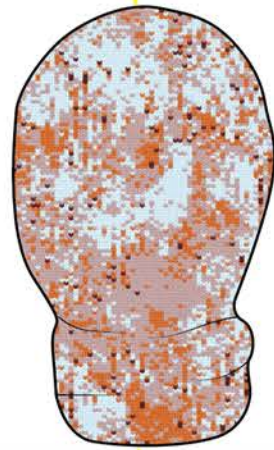
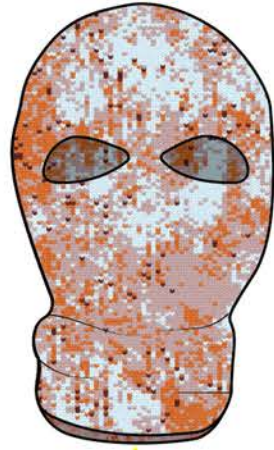
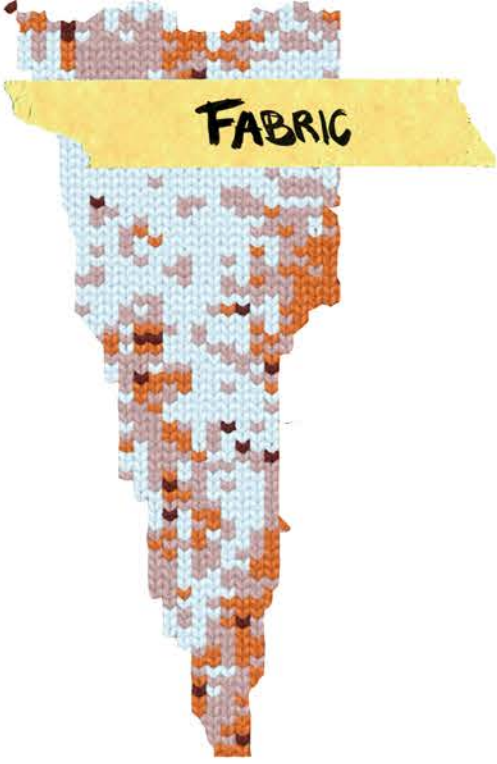


# LOOK FOUR

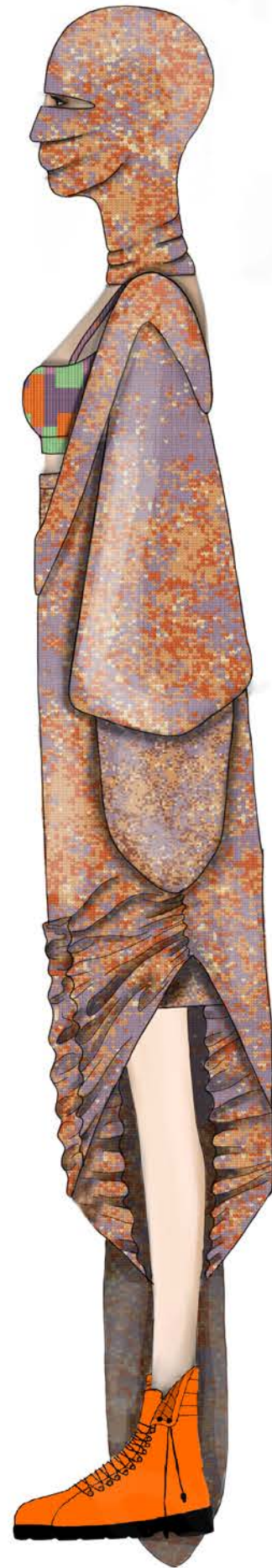


FABRIC

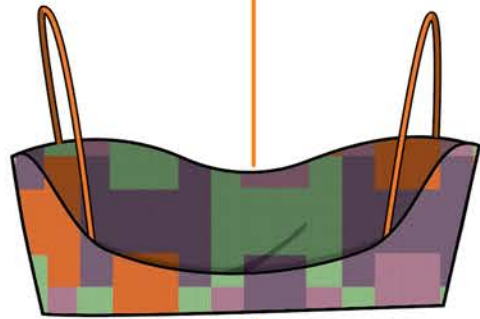
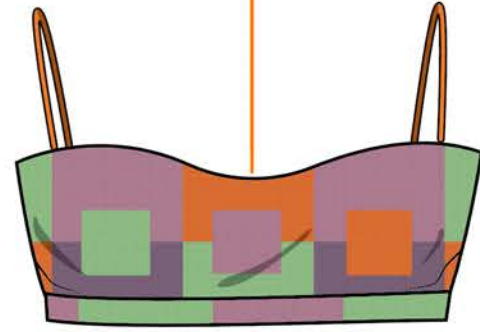
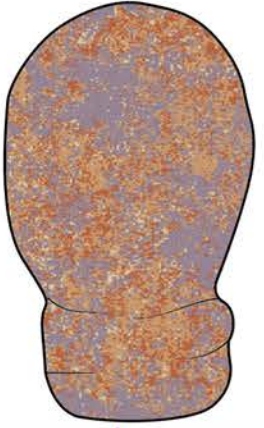
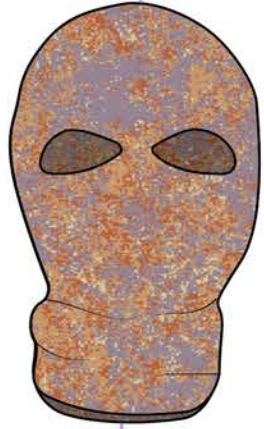
FABRIC



# LOOK FIVE



FABRIC



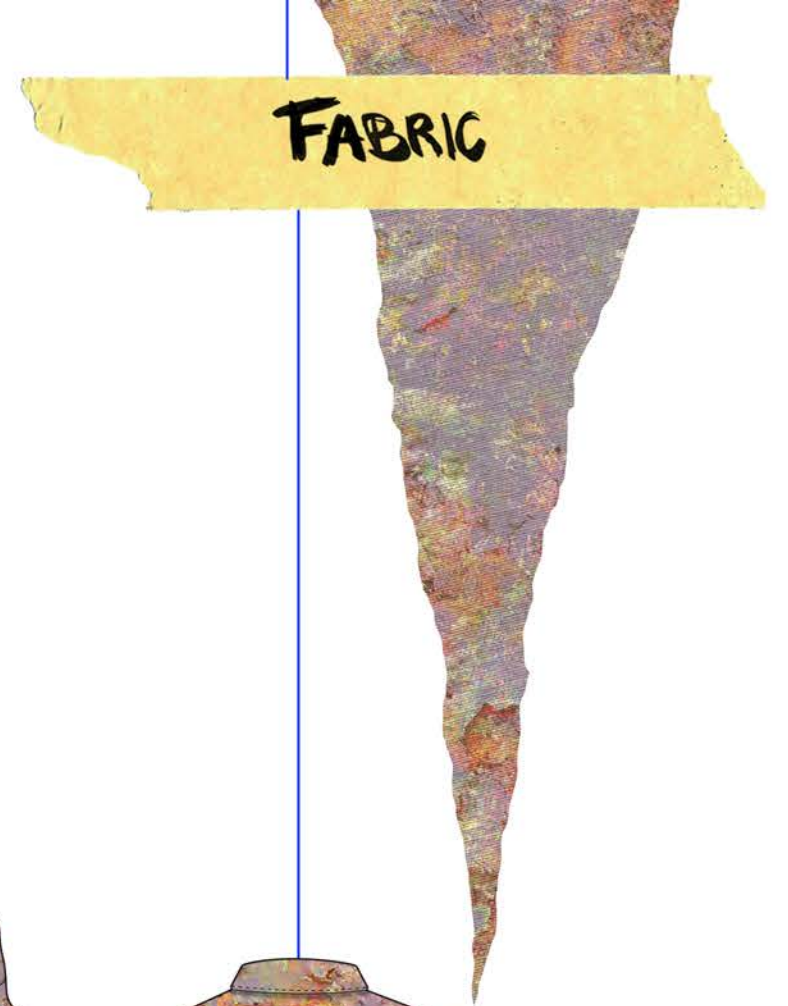
# LOOK SIX



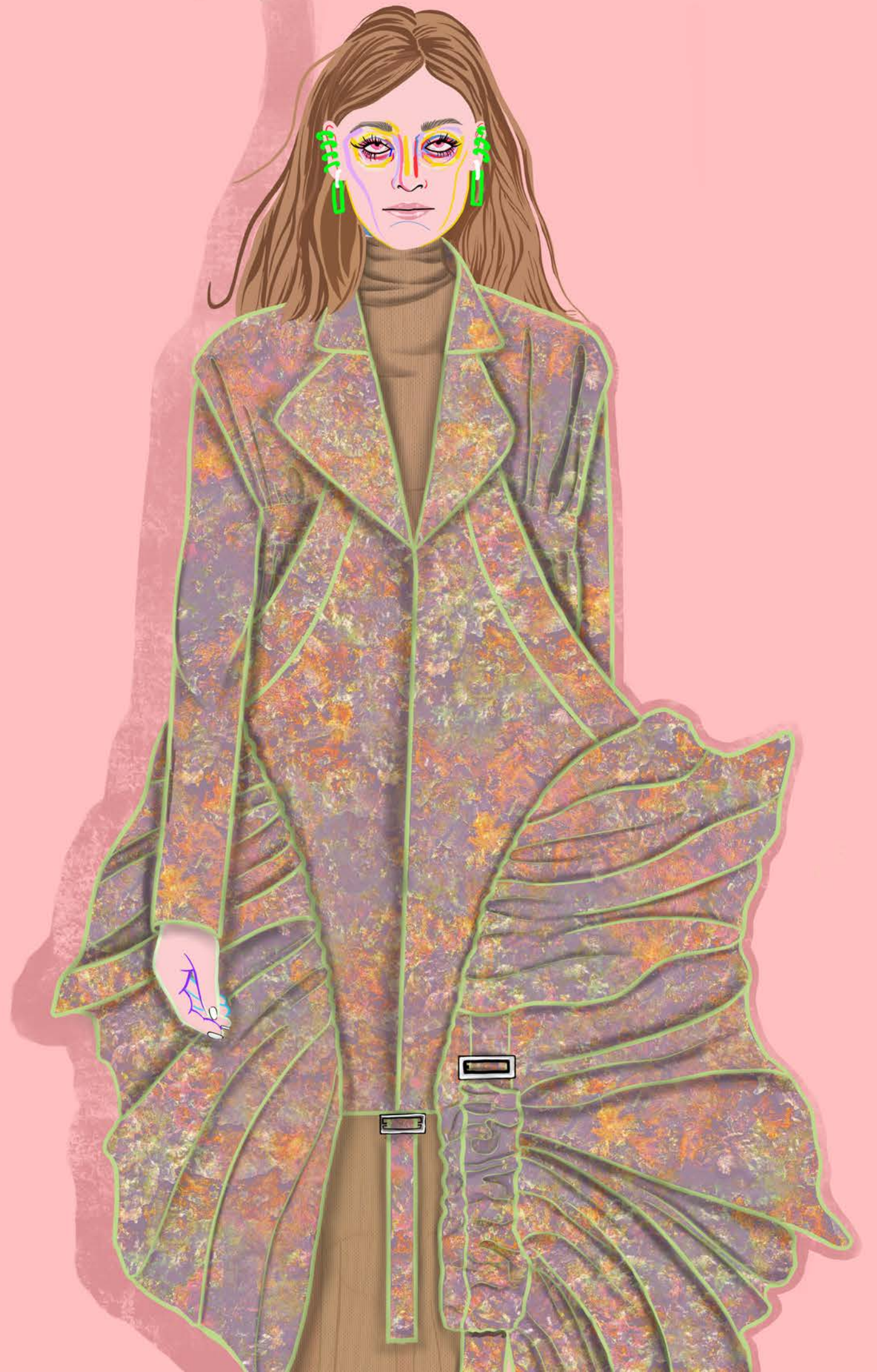
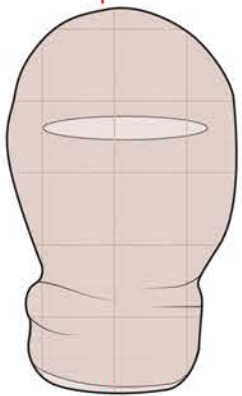
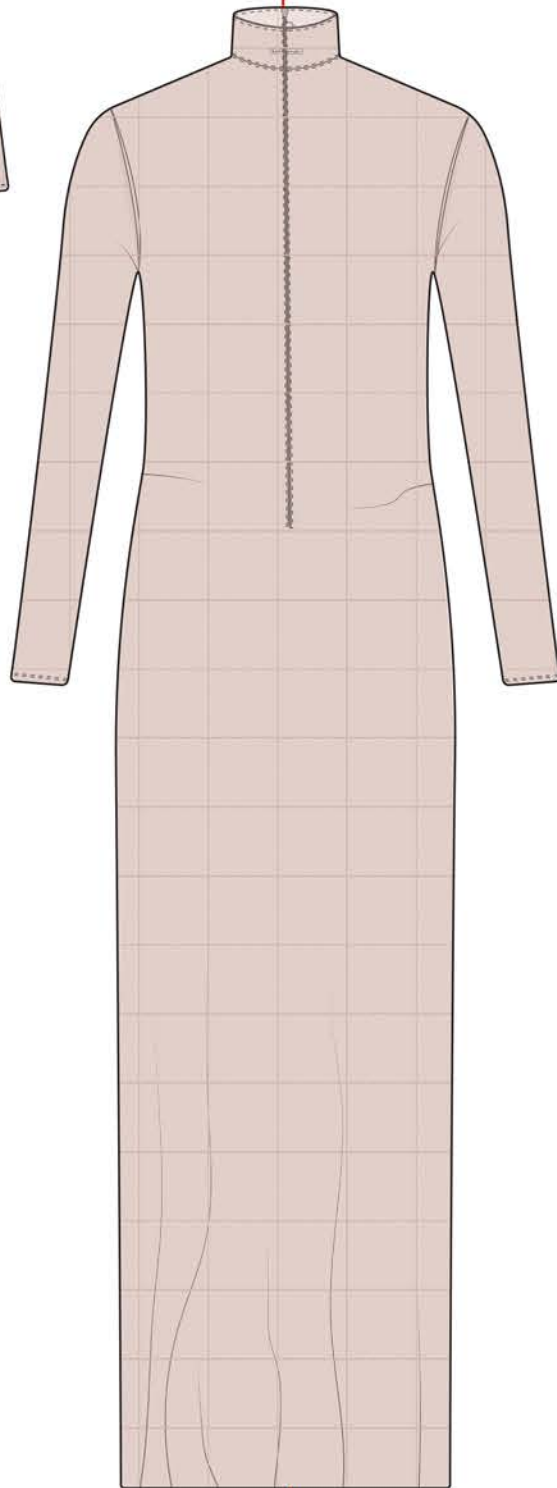
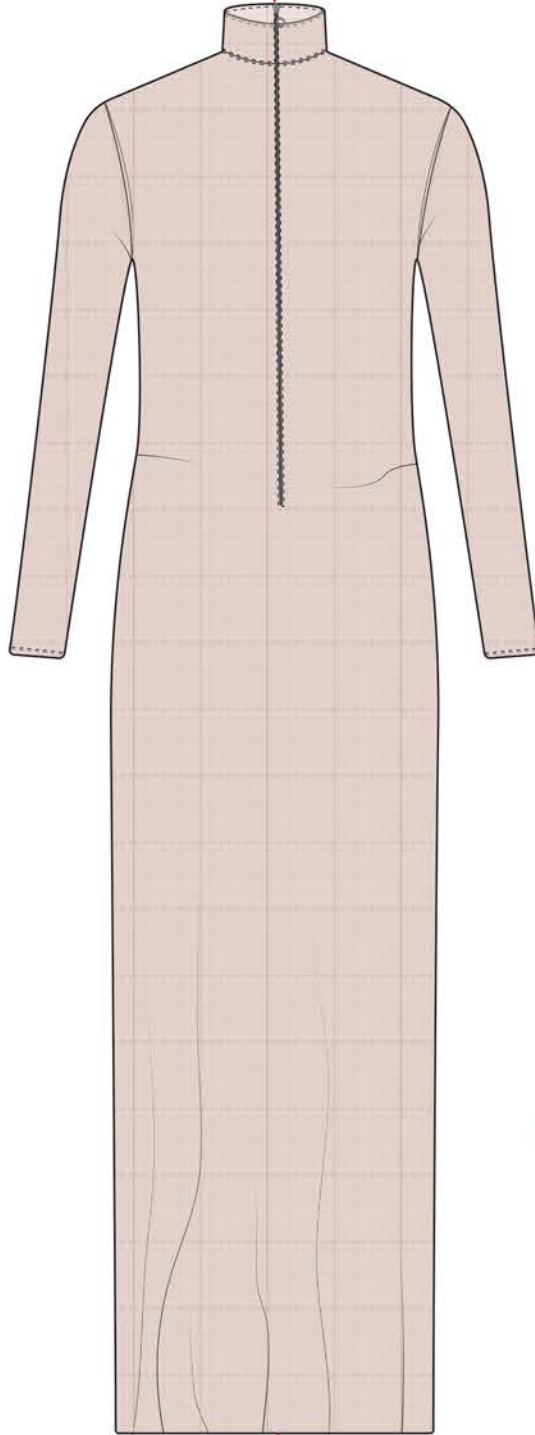
FABRIC



# LOOK SEVEN

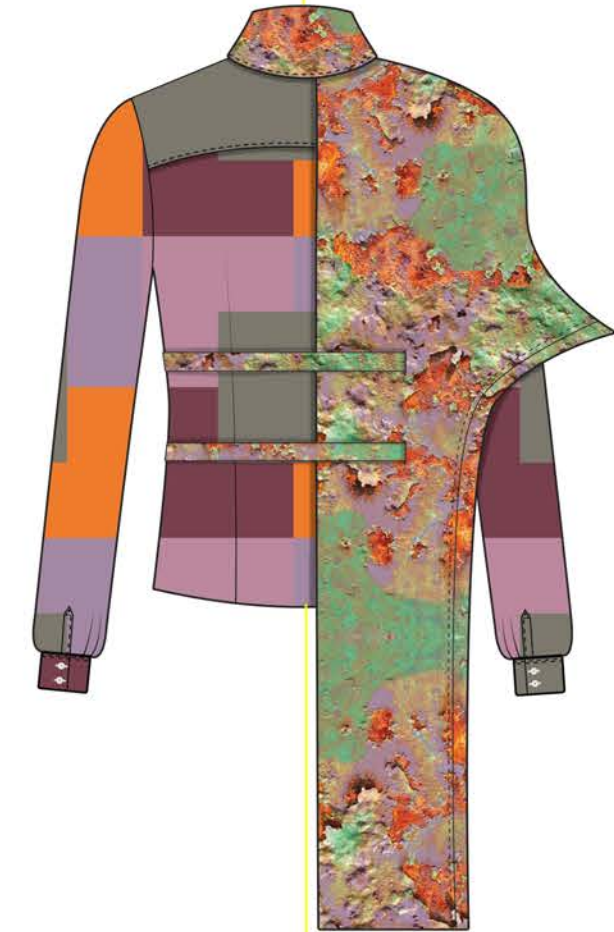
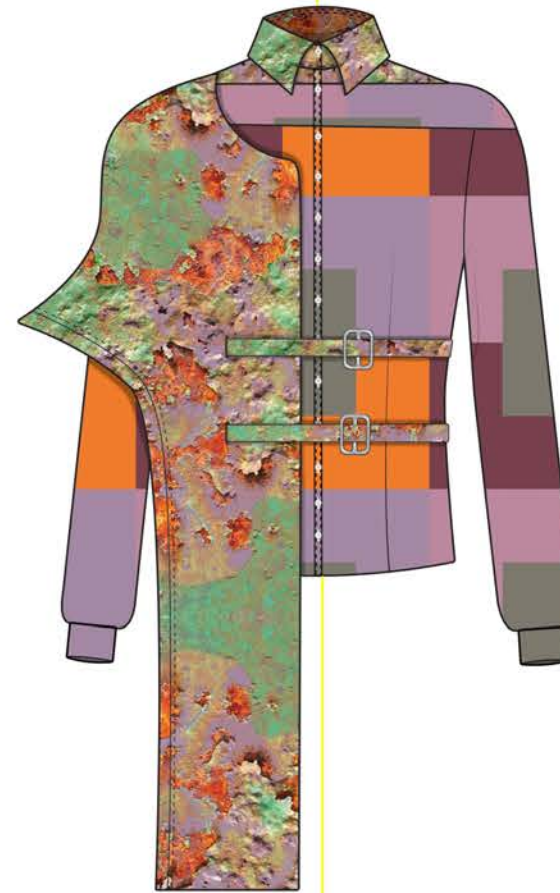


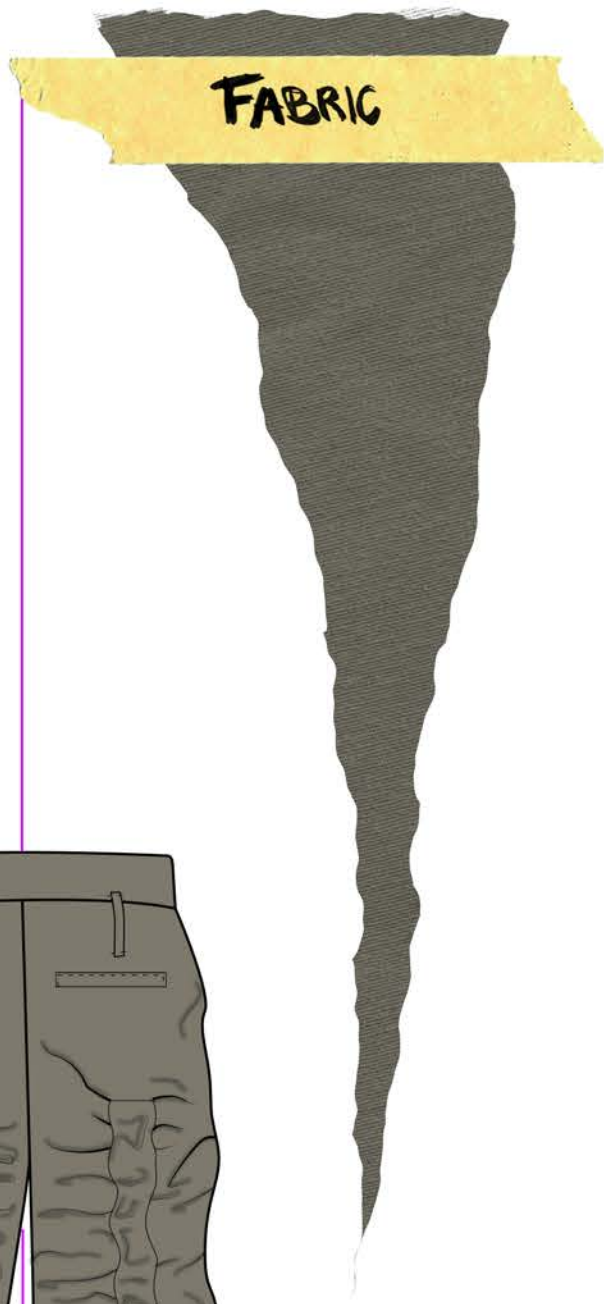
FABRIC





# LOOK EIGHT



















C' GINEVRA SANTOMAURO